



## KENYA CEREAL ENHANCEMENT PROGRAMME-CLIMATE RESILIENT AGRICULTURAL LIVELIHOODS WINDOW (KCEP-CRAL)

KENYA METEOROLOGICAL DEPARTMENT  
MAKUENI COUNTY METEOROLOGICAL OFFICE

P.O. Box Makueni

Tel: 0771010446

Email: kmdmakuenicounty@gmail.com

Website: www.meteo.go.ke

### SEASONAL WEATHER ADVISORIES FOR MAKUENI COUNTY OCTOBER- DECEMBER SEASON

#### 1 About this advisory

This advisory was developed on 12<sup>th</sup> and 13<sup>th</sup> October 2021 by a team of experts from Kenya Meteorological services (KMS), and officers from the Makueni County Department of Agriculture, Irrigation, Livestock and Fisheries Development together with other stakeholders. Funds for this work were sourced from KCEP-CRAL project.

This advisory presents the potential farm investment options for October-November-December season of 2021 in Makueni. The agro-advisory is mainly aimed at supporting the farm level decision making in all Wards/Locations in Makueni County and in planning agricultural activities for the development of the four key value chain crops for the county: **Maize, beans, Sorghum and green grams**

#### 2 Weather forecast for the October- December 2021 Season

October, November & December forecast: Most areas are expected to receive below normal rainfall amounts as shown on figure (1) below

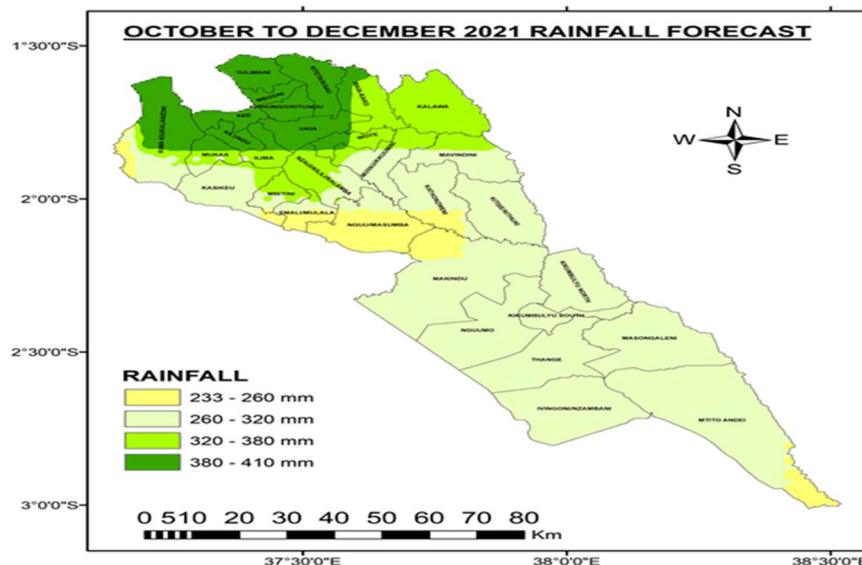


Figure 1: forecasted rainfall for OND-2021 Makueni County.

Zone	ONSET	CESSATION	LENGTH OF THE SEASON
<b>Upper AEZ zone</b> (Wards: Mbooni, Kilungu , Mukaa, Kithungo/Kitundu,)	Second to third week of November, 2021	Third to fourth week of December, 2021	4-5WEEKS
<b>Middle AEZ zone</b> (Kalamba, Kisau/ Kiteta, Kako/Waia Mavindini, , Muvau, Mbitini, Wote, Tulimani, Emali/Mulala , Kathonzweni,)	Second to third week of November 2021.	Third to fourth week of December, 2021	4-5WEEKS
<b>Lower AEZ zone</b> (Makindu, Nguu/Masumba, Kitise , Kalawa, Thange, Nguumo, Ivingoni/Nzambani , Kikumbulyu North, Kikumbulyu south Masongaleni, Mtito Andei)	Second to third week of November 2021.	Third to fourth week of December, 2021	4-5WEEKS

Table 1. Expected onset and cessation dates for various zones in Makueni County for OND 2021

- That there will also be weekly and monthly weather updates
- That updates can be obtained from KMD website, SMS and ENE FM Radio (**Radio dates to be communicated**).

### 3 Agronomic advisories

#### 3.1 Upper AEZ zone (Wards: Tulimani, Mbooni, Mukaa, Kaiti, Kilungu, Ilima,)

- Expected rainfall amount range: 380-410mm
- Expected dates of onset **15<sup>th</sup> -22<sup>nd</sup> November** and cessation: **14<sup>th</sup> to 21<sup>st</sup> December 2021**.
- Expected distribution: The rains will be poorly distributed in space and time.

	Recommended actions	Responsible
Hazards and Risks	<ul style="list-style-type: none"> <li>▪ Drought,/Famine (Prepare for famine relief food supplies)</li> <li>▪ Flash floods (Avoid crossing flooded rivers)</li> <li>▪ Pests and diseases outbreak (Use treated Mosquito nets, Drain flooded waters, Boil/Treat drinking water )</li> </ul>	NGOS,MDAS
Opportunities	Water harvesting	Department of Agric and Department of Water
Advisories for Maize	<ul style="list-style-type: none"> <li>○ Crop varieties <ul style="list-style-type: none"> <li>▪ DUMA 41/DUMA 43</li> <li>▪ LOCAL VARIETIES/KCB</li> <li>▪ DK 8031/8033</li> <li>▪ Pioneer P28</li> <li>▪ PANNER 67M/PIONER 3253</li> <li>▪ DH04</li> </ul> </li> <li>○ Timely Planting</li> <li>○ Timely Pest and disease control</li> <li>○ Timely Weed control</li> </ul>	Farmers,VCAs, WAOS
Advisories for Beans	Farmers are advised to plant the following crop varieties <ul style="list-style-type: none"> <li>▪ KAT X56</li> </ul>	Farmers, Value chain Actors (VCA)

	<ul style="list-style-type: none"> <li>▪ NYOTA</li> <li>▪ KAT B9</li> <li>▪ KAT X 69</li> <li>▪ GLP 2(NYAYO)</li> <li>▪ GLP 77(KAKUNZU)</li> </ul>	Agriculture Extension officers (WAO)
Advisories for Sorghum	Crop varieties Gadam sorghum ,SERENA/SEREDO	Farmers,VCAs, WAOS
Advisories for Green Grams	N 26/ KS 20	Farmers,VCAs, WAOS
Other advisories ( <i>add rows for each if necessary</i> )	Farmers are advised to liaise with the department of agriculture on the expected onset, number of rain days and cessation of rainfall but also on the choice of suitable crop varieties.	

### 3.2 Middle AEZ zone (Kalamba, Mavindini, Kitise, Wote, Kisau/Kiteta, Tulimani, Kako/Waia, Kathonzweni, Kasikeu, Kiima Kiu/Kalanzoni, Emali/Mulala)

- Expected rainfall amount range:260-320mm
- Expected dates of onset **15<sup>th</sup> -22<sup>nd</sup> November** and cessation: **14<sup>th</sup> to 21<sup>st</sup> Dec-2021**
- Expected distribution: rainfall to be poorly distributed in time and space

	Recommended actions	Responsible
Hazards and Risks	<ul style="list-style-type: none"> <li>▪ Drought,/Famine (Prepare for famine relief food supplies)</li> <li>▪ Flash floods (Avoid crossing flooded rivers)</li> <li>▪ Pests and diseases outbreak (Acquire treated Mosquito nets, drain flooded waters, treat drinking water )</li> </ul>	NGOS,MDA
Opportunities	Water availability hence we recommend water harvesting.	Department of Agric and Department of Water
advisories for Maize	<ul style="list-style-type: none"> <li>▪ DUMA 41/ DUMA 43</li> <li>▪ KDV 1/KDV4</li> <li>▪ LOCAL VARIETIES i.e Sawa,Mituki,Haraka,Sungura</li> <li>▪ DH01/DH02</li> <li>▪ KISHINDO</li> <li>▪ DH04/DK 8031</li> </ul>	Farmers,VCAs, WAOS
advisories for Beans	<ul style="list-style-type: none"> <li>▪ KAT B1(Kathika)</li> <li>▪ KAT X56(Kitui)</li> <li>▪ GLP 92(MWITEMANIA)</li> <li>▪ KAT B9</li> <li>▪ MWEZI MMOJA</li> </ul>	Farmers,VCAs, WAOS
Advisories for Sorghum	SEREDO, GADAM SORGHUM, KARI MTAMA 1,SILA,SEREDO	Farmers,VCAs, WAOS
Advisories for Green Grams	N 26/ KS 20 Karembo, Biashara	Farmers,VCAs, WAOS
Other advisories	•Land preparation- should be done early before rainfall onset ; use properly maintained equipment to break the hardpan ; Repair	

<i>(add rows if necessary)</i>	SWC structures (Terraces and CODs), sowing and transplanting seedling should be done at the right time , use proper seed rate and varieties	
--------------------------------	---	--

### 3.3 Lower AEZ zone (Makindu, Kitise, Ivingoni/Nzambani, Kikumbulyu south, Kikumbulyu North, Thange, Nguumo, Nguu/Masumba, Masongaleni, Mtito Andei)

- Expected rainfall amount range: 233-260mm
- Expected dates of onset **15-22<sup>nd</sup> November** and cessation: **14-21<sup>st</sup> December 2021**
- Expected distribution: poorly distributed in time and space

	Recommended actions	Responsible
Hazards and Risks	<ul style="list-style-type: none"> <li>▪ Drought,/Famine (Prepare for famine relief food supplies)</li> <li>▪ Flash floods (Avoid crossing flooded rivers)</li> <li>▪ Pests and diseases outbreak (Acquire treated Mosquito nets, drain flooded waters, treat drinking water )</li> </ul>	MDAS &NGOS
Opportunities	Water harvesting	Department of Agric and Department of Water
advisories for Maize	DLC (UPPER ZONES)	Farmers, Agriculture Extension officers
advisories for Beans	KAT B1(Kathika) GLP 92	Farmers, Agriculture Extension officers
Advisories for Sorghum	GADAM SORGHUM	Farmers, Agriculture Extension officers
Advisories for Green Grams	N 26/ KS 20	Farmers, Agriculture Extension officers
Other advisories <i>(add rows if necessary)</i>	<b>Water harvesting</b> -Farmers are advised to do water harvesting in Earth Dams, farm ponds water pan and roof catchment in water tanks to meet the community / farmers need. Technologies that uses waters efficiently should be emphasized like drip systems, water absorbent etc.	