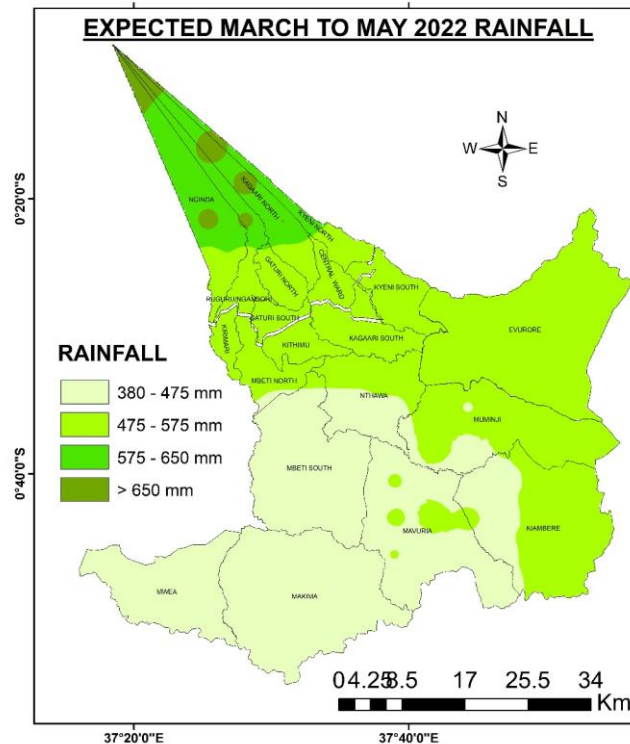


**Weather Update for the month of April 2022 for Embu County for Radio**



Courtesy of Embu County Meteorological Office of 2022

**1 Manyatta Sub-County (Wards: Kirimari, Nginda, Gaturi South, Mbeti North, Ruguru Ngandori, Kithimu) and Runyenjes Sub-County (Wards: Kagaari South, Kagaari North, Gaturi North, Runyenjes Central, Kyeni South, Kyeni North)**

- This zone usually receives the highest amount of rainfall in the county in the March-April-May rainy season.
- The seasonal rains generally started in the last week of March 2022.
- The forecast for April indicates that rainfall is expected during much of the month. However, occasional dry breaks are likely, especially during the first half of the month.
- For the current week (Tuesday 5<sup>th</sup> April to Monday 11<sup>th</sup> April), the weather forecast is as follows:
  - Tuesday: Light afternoon showers
  - Wednesday: Light morning rains
  - Thursday and Friday: Light morning rains and light afternoon showers
  - Saturday: Light afternoon showers
  - Sunday: No rain
  - Monday: Light morning rains and light evening showers
  - Total weekly rainfall 10-20 mm
- Farmers are advised to consult the local Ministry of Agriculture officers for appropriate agricultural advisories.

## **2 Mbeere North Sub-County (Wards: Evurore, Muminji, Nthawa) and Mbeere South Sub-County (Wards: Mbeti South, Kiambere, Mwea, Makima, Mavuria)**

- This zone usually receives low to medium amounts of rainfall in the March-April- May rainy season.
- The forecast for April indicates that rainfall is expected during much of the month. However, occasional dry breaks are likely, especially during the first half of the month.
- For the current week (Tuesday 5<sup>th</sup> April to Monday 11<sup>th</sup> April), the weather forecast is as follows:
  - Tuesday: No rain
  - Wednesday and Thursday: Light morning rains
  - Friday to Sunday: No rain
  - Monday: Light evening showers
  - Total weekly rainfall 10-15 mm
- Farmers are advised to consult the local Ministry of Agriculture officers for appropriate agricultural advisories.