

**KENYA METEOROLOGICAL DEPARTMENT
P.O BOX 30259, NAIROBI KENYA**

*For enquiries and further information, please call, SMS or WhatsApp the Makueni county
Meteorological office tel: 0771010446*

April 2022 weather update for Makueni County

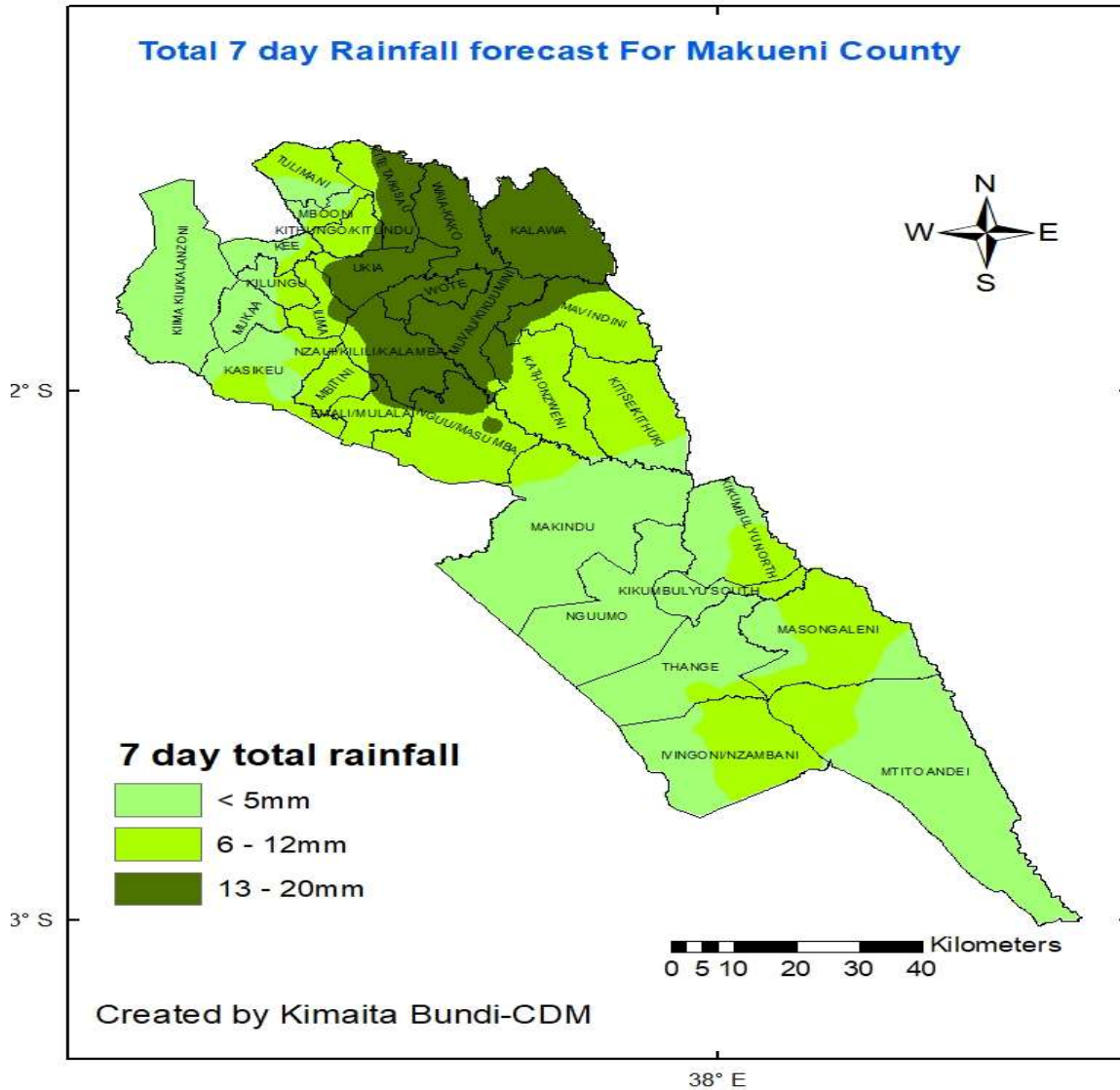


Fig (1) Total 7 day rainfall forecasted for Makueni County.

1 High rainfall Wards

Upper AEZ zone (Wards: Mbooni, Mukaa, Kithungu/Kitundu, Mbitini, Kalawa)

- These areas usually receives between 200-300mm of rainfall in the month of April.
- The forecast indicates the rains during this month will **below normal**. The first half of the month from 1st to 13th will be generally dry.
- The forecast indicates Mbooni, Mukaa, Kithungu/Kitundu and Mbitini ward will receive 15-25mm of rains for the first half of the season.
- The rains received in the first half of the month are below long term average.

2 Medium rainfall Wards

Middle AEZ zone (Tulimani, Kako/Waia, Kisau/Kiteta, Kasieku, Kiima/Kiu, Kalamba, Mavindini, Emali/Mulala, Wote, Muvau/Kikumini)

- These areas usually receives between 100-200mm of rainfall in the month of April.
- The forecast indicates the rains during this month will **below normal**.
- The 7-day forecast indicates Wote, Kako/Waia; Kalamba wards will receive total rains of 10-20mm of the forecast period.
- The amounts received per day will be less than 10mm but farmers to be in look out of isolated cases of storms.
- The first half of the month from 1st to 13th will be generally dry. Chances of rains to resume in the 2nd half of the month.
- Farmers are advised to consult the local Ministry of Agriculture officers for appropriate agricultural advisories.

3 Low rainfall Wards

Lower AEZ zone (Makindu, Nguu/Masumba, Kikumbulyu South, Kikumbulyu North, Nguumo, Thange, Nzambani/Vingoni, Mavindini, Kathonzweni, Kitse/Kithuki, Masongaleni, Mtito Andei)

- These areas usually receives between 100-150mm of rainfall in the month of April.
- The forecast indicates the rains during this month will **below normal**.

- The 7-day forecast Mtito Andei, Kathonzwi, Masongaleni Kikumbulyu South and North, Makindu will receive less than 10mm of rains.
- The first half of the month from 1st to 13th will be generally dry. Chance of rains in the second half of the month.
- Farmers are advised to consult the local Ministry of Agriculture officers for appropriate agricultural advisories.

Potential Impacts

- I. The occasional rainfall expected over the Makueni County may lead to soil erosion as the land over these areas has been degraded by the ongoing drought. The communities in these areas are therefore advised to put in place soil conservation measures.
- II. The near to below-average rainfall expected over the county may not be sufficient for agricultural practices and regeneration of pasture and browse. This is expected to aggravate the poor food situation and availability of pasture, browse, and water for humans, livestock, and wildlife.
- III. The expected rainfall during the peak month of April may result in occasional flooding in flood-prone areas, poorly drained urban centers as well as along rivers. Relevant authorities are therefore advised to put in place measures to avert possible negative impacts that may arise
- IV. Water shortage is likely to persist in areas expected to receive below normal rainfall. Thus efficient water management should be carried out to ensure enough water resources are available for the animal and human population needs in these areas. Rainwater harvesting should also be encouraged to boost water availability for households as well as for livestock use.

Yours Faithfully.



Kimaita Bundi

CDMs Makueni County.