



REPUBLIC OF KENYA
MINISTRY OF ENVIRONMENT AND FORESTRY
KENYA METEOROLOGICAL DEPARTMENT
COUNTY METEOROLOGICAL SERVICES, MAKUENI COUNTY

Weekly forecast.

Ref: MET/Makueni County2803222

Date of issue 9th May, 2022

WEATHER FORECAST FOR THE NEXT SEVEN DAYS VALID 10th to 16th May 2022

Forecasted rainfall for the next 7 days

Forecast for the next Seven Days (10th to 16th May 2022) indicates that;

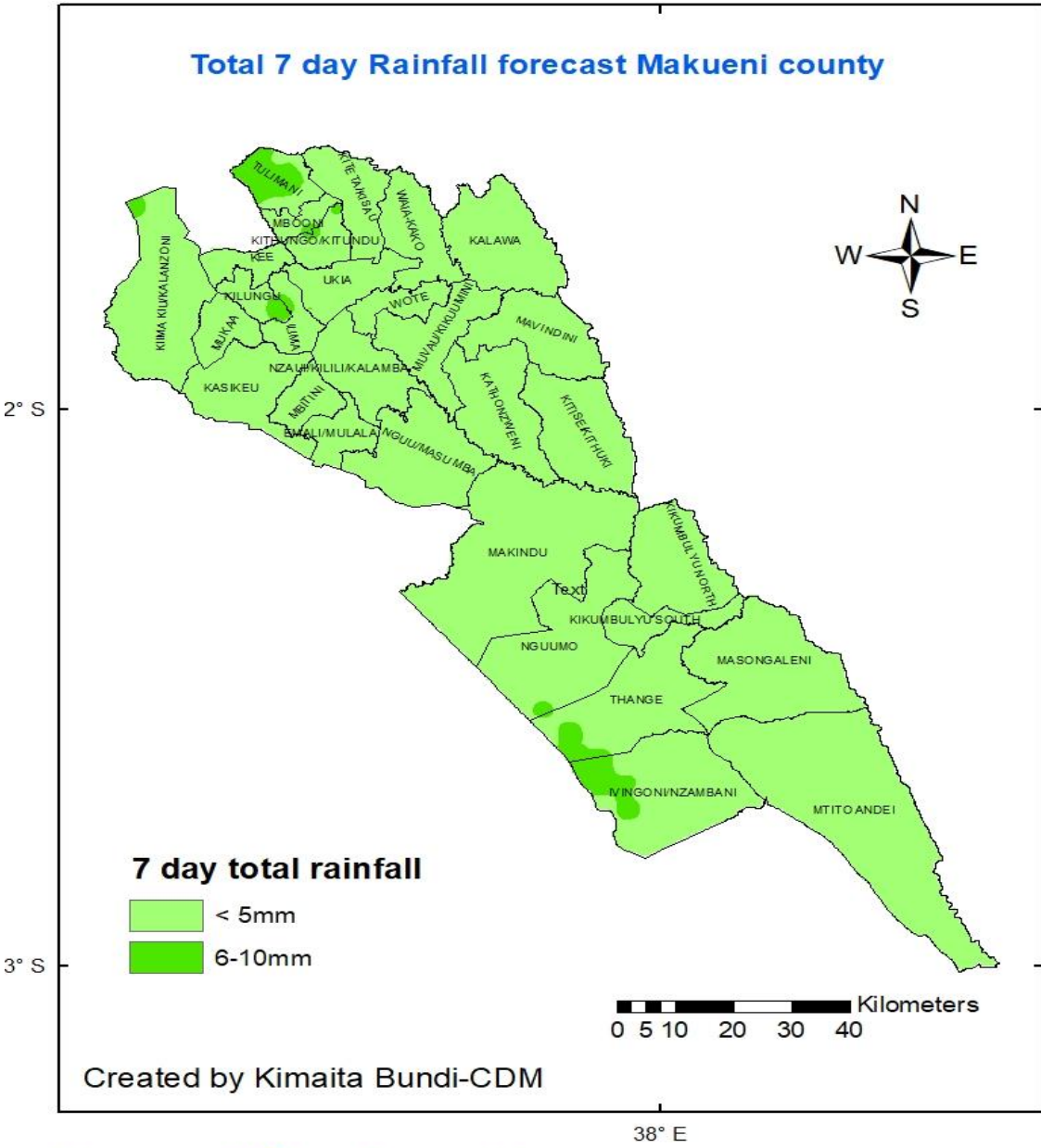
- Makueni County is expected to experienced dry conditions over the forecast period.
- Chances of light rains in the afternoon over few places.
- The expected rains is less than 10mm.

Review of weather for the last seven days (3rd to 9th May 2022)

- The county experienced dry conditions over the forecast period.
- The temperatures were high during the day and low during the night.

SUMMARY FORECAST FOR THE NEXT SEVEN DAYS (10-16th May 2022)

The forecast for the next seven-day period indicates that:



data source:KMD weather model

Fig (1) indicates the total 7-day rainfall forecasted for Makueni County.

Detailed Weather Forecast for the Next Seven Days Valid (10-16th May 2022)

Summary of weather of the following sub-counties (Mbooni, Kilome, Makueni, Kibwezi East & West)

1. Mbooni sub-county

	Night	Morning	Afternoon	Evening	Max/min temp.	Precip.	Wind
Tuesday 10 May					25° / 12°		3 m/s
Wednesday 11 May					24° / 12°		3 m/s
Thursday 12 May					24° / 10°		3 m/s
Friday 13 May					23° / 13°	0.1 mm	3 m/s
Saturday 14 May					23° / 12°	0.5 mm	3 m/s
Sunday 15 May					24° / 11°	0.6 mm	3 m/s
Monday 16 May					23° / 12°	1.8 mm	4 m/s

[://www.yr.no/en](http://www.yr.no/en)

2. Kilome sub-county

	Night	Morning	Afternoon	Evening	Max/min temp.	Precip.	Wind
Tuesday 10 May					24° / 12°	1.6 mm	3 m/s
Wednesday 11 May					24° / 12°	0.5 mm	3 m/s
Thursday 12 May					23° / 11°	0.3 mm	3 m/s
Friday 13 May					22° / 11°	0.7 mm	3 m/s
Saturday 14 May					23° / 12°	0.7 mm	3 m/s
Sunday 15 May					24° / 10°	0.8 mm	4 m/s
Monday 16 May					22° / 12°	3.1 mm	5 m/s

3. Makueni sub-county

	Night	Morning	Afternoon	Evening	Max/min temp.	Precip.	Wind
Tuesday 10 May					29° / 16°		2 m/s
Wednesday 11 May					29° / 16°	0.2 mm	3 m/s
Thursday 12 May					29° / 15°		3 m/s
Friday 13 May					27° / 17°	0.2 mm	3 m/s
Saturday 14 May					28° / 16°	0.5 mm	4 m/s
Sunday 15 May					29° / 15°	0.3 mm	4 m/s
Monday 16 May					27° / 17°	2.4 mm	4 m/s

<http://www.vr.no/en>

4. Kibwezi-west sub-county

	Night	Morning	Afternoon	Evening	Max/min temp.	Precip.	Wind
Tuesday 10 May					31° / 18°		4 m/s
Wednesday 11 May					31° / 19°		3 m/s
Thursday 12 May					30° / 17°		5 m/s
Friday 13 May					29° / 18°	0.3 mm	5 m/s
Saturday 14 May					30° / 18°		4 m/s
Sunday 15 May					30° / 17°	0.1 mm	5 m/s
Monday 16 May					29° / 18°	0.2 mm	5 m/s

5. Kibwezi-East sub-county

	Night	Morning	Afternoon	Evening	Max/min temp.	Precip.	Wind
Tuesday 10 May					33° / 20°		4 m/s
Wednesday 11 May					34° / 21°		4 m/s
Thursday 12 May					32° / 19°		4 m/s
Friday 13 May					32° / 20°		4 m/s
Saturday 14 May					33° / 20°		4 m/s
Sunday 15 May					32° / 19°	0.4 mm	5 m/s
Monday 16 May					32° / 20°	0.1 mm	5 m/s

COMPARING ACCUMULATED RAINFALL AMOUNTS FOR THE LAST TWO WEEKS

<i>Station Name</i>	<i>25th April to 1st May 2022</i>	<i>2nd to 8th May 2022</i>
<i>Nguu/Masumba</i>	<i>32.5mm</i>	<i>0</i>
<i>Emali/Mulala</i>	<i>37.4mm</i>	<i>0</i>
<i>Wote/Malivani</i>	<i>38.6mm</i>	<i>0</i>
<i>Kasieku</i>	<i>22.9mm</i>	<i>0</i>
<i>Kitse/Kithuku</i>	<i>34.2mm</i>	<i>0</i>
<i>Masongaleni</i>	<i>0mm</i>	<i>0</i>
<i>Kalawa</i>	<i>47.1mm</i>	<i>0</i>
<i>Mbooni</i>	<i>15mm</i>	<i>0</i>
<i>Mtito Andei</i>	<i>0mm</i>	<i>0</i>
<i>Mukaa/Kitango</i>	<i>30.5mm</i>	<i>0</i>
<i>Kikumbulyu South</i>	<i>5.5mm</i>	<i>0</i>

Key Scientific Terms Used in the Forecast

RAINFALL CATEGORIES	
< 5 mm	Light
5 – 20 mm	Moderate
20 – 50 mm	Heavy
> 50 mm	Very heavy
RAINFALL COVERAGE	
TERMs	MEANING
Most places	Between 67% and 100%
Several Places	Between 33% and 67%
Few places	Below 33%

Note; It's important to follow up this weekly forecast with the 24hr forecast issued daily by the department.

1 mm of rainfall is equivalent to 1 litre of water per square meter

Kimaita Bundi.
 County Director of Meteorology services-Makueni
 Tel. 07216521567
 e-mail: kmdmakuenicounty@gmail.com, kimaita@meteo.go.ke

For further information please contact:
 Director KMD
 Tel:+254724255153/4
 E-mail: director@meteo.go.ke, info@meteo.go.ke
 Website: <http://www.meteo.go.ke>