

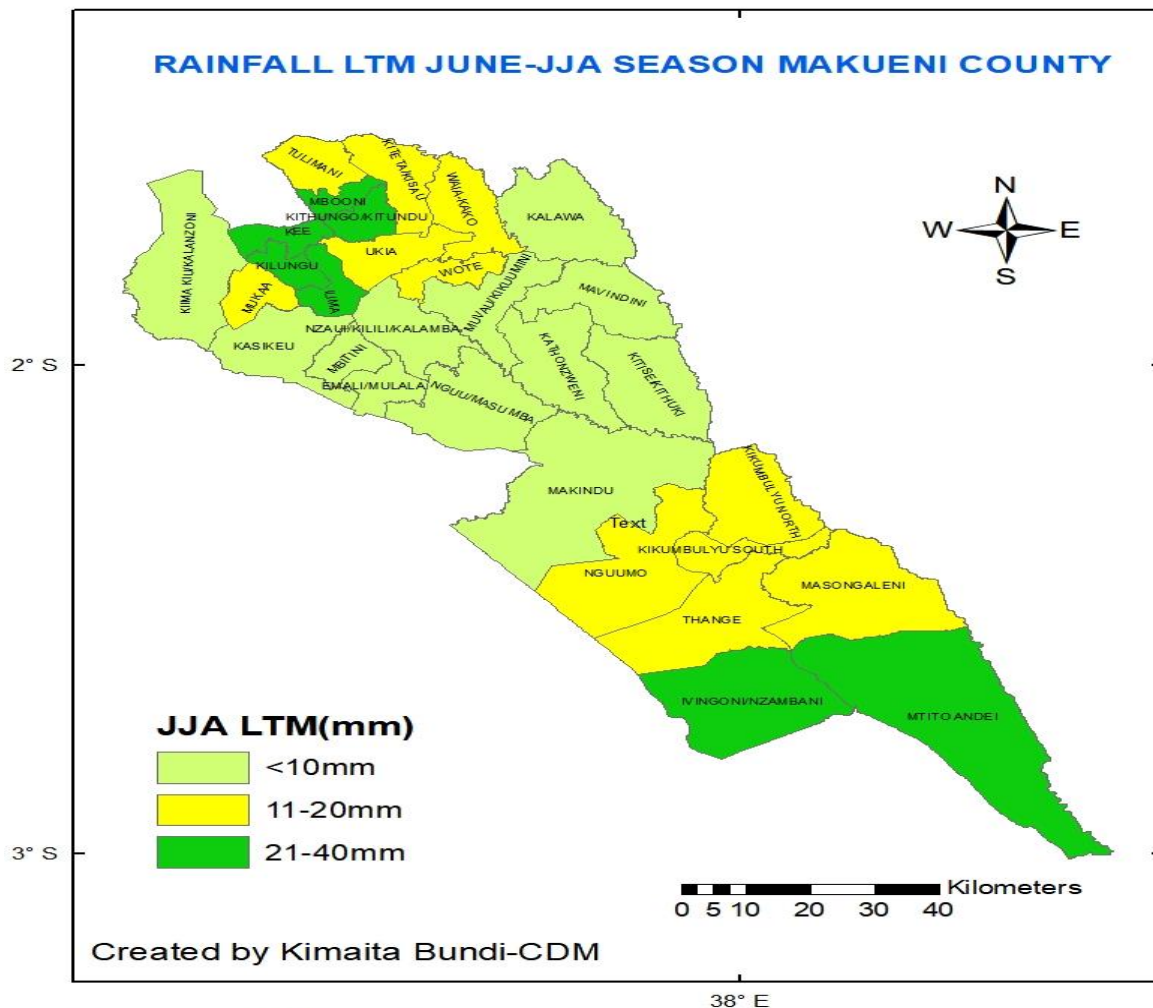
MAKUENI COUNTY

*For enquiries and further information, please call, SMS or WhatsApp the Makueni county Meteorological office tel: 0771010446*

THE OUTLOOK FOR JUNE-JULY-AUGUST 2022 SEASON

1. JJA WEATHER OUTLOOK

The county of Makueni is expected to be generally **sunny and dry** throughout the forecast period. The forecast indicates the county is expected to be warmer than normal. The map below shows the long term mean (LTM) for the June-July-August season(JJA)



data source:KMD weather model

## Key

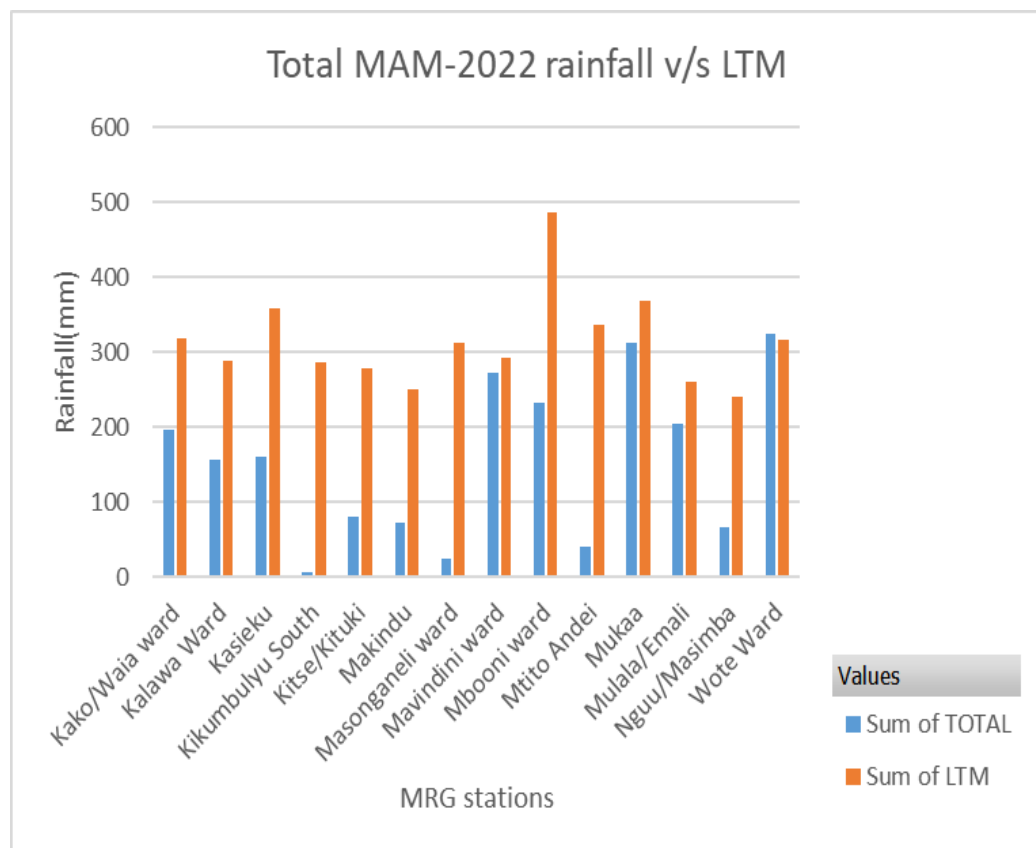
Nominal Category	Interpretation
Above average rainfall	Greater than 125% of long-term mean
Near average rainfall	75% - 125% of long-term mean
Below average rainfall	Less than 75% of long-term mean

### 2. Rainfall in May-2022

The month of May was generally dry throughout the county. This marked the cessation of the MAM season.

### 3. Weather Review for March -April –May (MAM) 2022

The season was below average in most parts of the county. The rains were a failure in Kibwezi east and west sub counties. The distribution was poor in both time and space. The season was also short since the rains started by the end of last week of March and the cessation was on the 3<sup>rd</sup> week of April. The graph below indicates the amounts of rains compared to the long term mean (LTM)



Graph (1) indicates comparison of total rainfall (MAM-2022) with LTM

## **4. EXPECTED POTENTIAL IMPACTS**

### **4.1 Agriculture and Food Security Sector**

The current shortage of water, food, pasture and browse for both human and livestock over the county is expected to worsen owing to the poor performance of the March-May rainfall season and the dry conditions expected over these regions during the JJA season. Relevant authorities and humanitarian are therefore advised to intensify the measures already put in place to avert loss of lives, livelihoods, and livestock.

### **4.2 Disaster Management Sector**

The current drought being experienced over some parts the county is expected to persist. This may in turn lead to conflicts over the limited resources especially water, pasture and browse. County government and humanitarian organizations are therefore advised to enhance the measures being implemented to avert the loss of lives, livelihoods, and livestock. Local leaders are also advised to promote peace and encourage resource sharing among the communities.

### **4.3 Health Sector**

Food shortage in the county may lead to an increase in malnutrition-related diseases. The food security assessment should therefore be carried out to identify the most vulnerable communities and provide them with water, food or food supplements.

### **4.4 Water Resources Management and the Energy Sectors**

Water scarcity is expected to persist over several parts of the county especially over Kibwezi East and west parts of Makueni sub-county and Mbooni. Thus, efficient water management and trucking should be carried out to ensure enough water resources are available for the animal and human population needs in these areas.

### **4.5 Environment**

There may be an increase in human-wildlife conflicts as wild animals migrate in search of forage and water. Relevant authorities are advised to provide fodder and water to wildlife in protected areas as well as mobilize animal control rangers and veterinary units to handle these conflicts. There is a likelihood of increased wildfires in areas expected to remain dry. Thus, fire management practices should be put in place

Yours Faithfully

Kimaita Bundi

CDM-Makueni

## 1 Crop Impacts Photos.

(a) Maize planted in Nzau/Kalamba Ward as on 27/04/2022



(b) Green grams Ward: Muvau/Kikumini date: 30/04/2022





(c) Green grams Ward Mbitini Date: 14/04/2022

