



For further info:
 Contact Daniel M. Mbithi
 Mobile No. 0715255171
 Email: mbithi_d@yahoo.com
 County director of Meteorological Services Kitui County

Amendment: Weekly weather forecast for Kitui County

1. PART I: WEEKLY FORECAST FOR THE PERIOD 29 November to 5 December 2022

1.1 Weather forecast Table

Sub County	Ward	Total weekly amount (mm)	Probable weather							Winds (m/s meters per sec)	Temperature (°C)
			Notes: Light rains <1-5 mm; Moderate rains 5-20 mm; Heavy rains >20 mm								
			Tue	Wed	Thur	Fri	Sat	Sun	Mon		
Mwingi West	Nguutani	50 mm	Moderate showers	Moderate showers	Light rains	Light rains	Moderate showers	Light rains	Light rains	SE at 4 m/s	Max 23-28°C Min 16-18°C
	Kyome/Thana	70 mm	Moderate showers	Moderate showers	Light rains	Light rains	Moderate rains	Light rains	Light rains	SE at 4 m/s	

Sub County	Ward	Total weekly amount (mm)	Probable weather Notes: Light rains <1-5 mm; Moderate rains 5-20 mm; Heavy rains >20 mm							Winds (m/s meters per sec)	Temperature (°C)
			Tue	Wed	Thur	Fri	Sat	Sun	Mon		
	Kiomo/Kyethani	80 mm	Moderate showers	Moderate showers	Light rains	Light rains	Moderate showers	Light rains	Light rains	SE at 4 m/s	
	Migwani	100 mm	Moderate showers	Moderate showers	Light rains	Light rains	Moderate showers	Light rains	Light rains	SE at 4 m/s	
Mwingi North	Ngomeni	50 mm	Moderate showers	Light rains	Light rains	Light rains	Moderate showers	Moderate showers	Light rains	SE at 2 m/s	Max 25-31 °C Min 18-21 °C
	Kyuso	60 mm	Moderate showers	Moderate showers	Light rains	Light rains	Moderate showers	Light rains	Light rains	SE at 2 m/s	
	Tseikuru	60 mm	Moderate showers	Moderate showers	Light rains	Light rains	Moderate showers	Light rains	Light rains	SE at 3 m/s	
	Tharaka	70 mm	Moderate showers	Moderate showers	Light rains	Light rains	Moderate showers	Light rains	Light rains	SE at 2 m/s	
	Mumoni	100 mm	Heavy showers	Moderate showers	Light rains	Light rains	Moderate showers	Light rains	Light rains	SE at 3 m/s	
Mwingi Central	Central	60 mm	Moderate showers	Moderate showers	Light rains	Light rains	Moderate showers	Light rains	Light rains	SE at 4 m/s	Max 25-30 °C Min 16-19 °C
	Kivou	60 mm	Moderate showers	Moderate showers	Light rains	Light rains	Moderate showers	Light rains	Light rains	SE at 4 m/s	
	Mui	100 mm	Heavy showers	Moderate showers	Light rains	Light rains	Moderate showers	Light rains	Light rains	SE at 4 m/s	

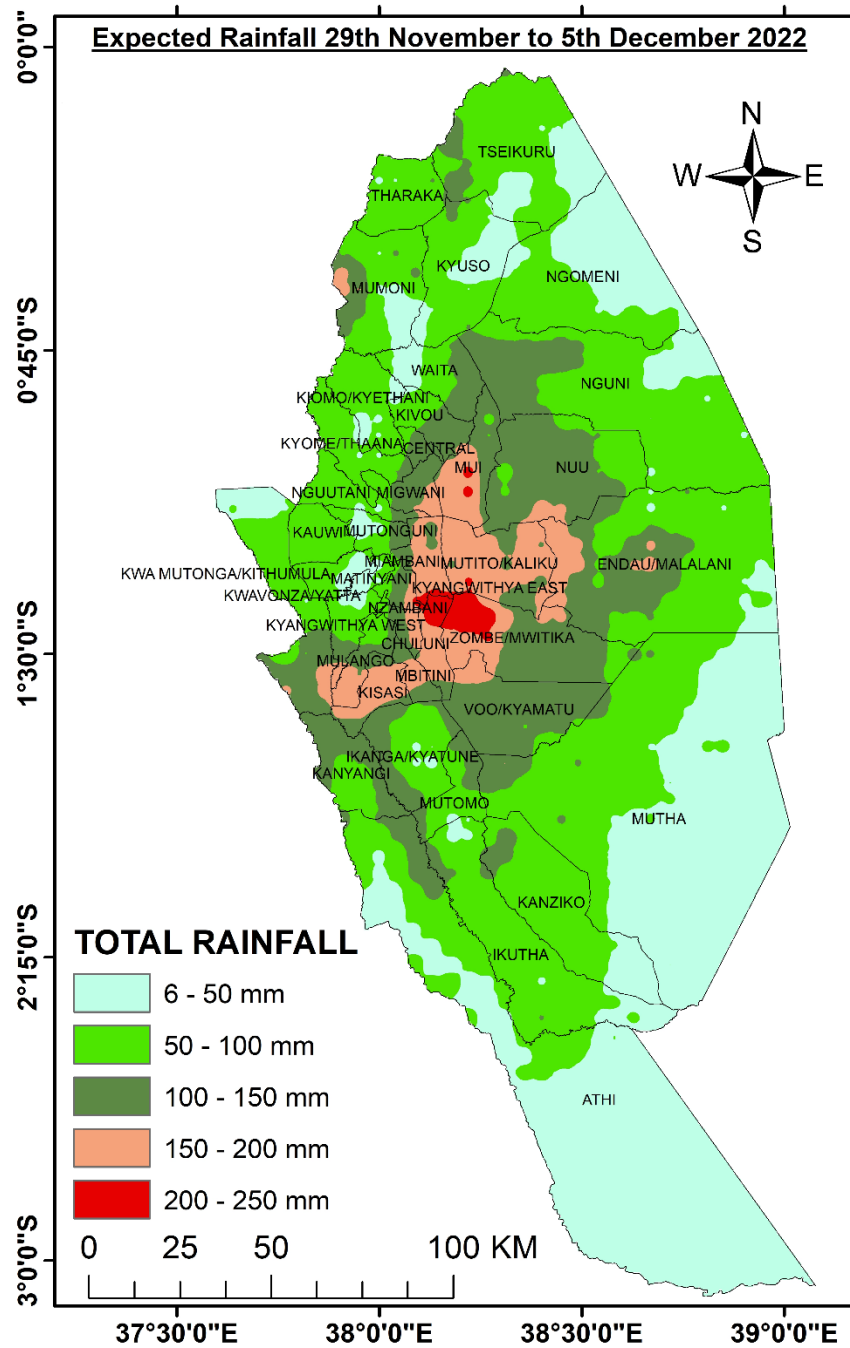
Sub County	Ward	Total weekly amount (mm)	Probable weather							Winds (m/s meters per sec)	Temperature (°C)
			Notes: Light rains <1-5 mm; Moderate rains 5-20 mm; Heavy rains >20 mm								
			Tue	Wed	Thur	Fri	Sat	Sun	Mon		
	Waita	70 mm	Moderate showers	Moderate showers	Light rains	Light rains	Moderate showers	Light rains	Light rains	SE at 3 m/s	
	Nuu	60 mm	Moderate showers	Moderate showers	Light rains	Light rains	Moderate showers	Light rains	Light rains	SE at 4 m/s	
	Nguni	65 mm	Moderate showers	Moderate showers	Light rains	Light rains	Moderate showers	Light rains	Light rains	SE at 3 m/s	
Kitui South	Ikanga/Kyatune	60 mm	Moderate showers	Moderate showers	Light rains	Light rains	Moderate showers	Light rains	Light rains	SE at 3 m/s	Max 25-29 °C Min 18-20 °C
	Mutomo/Kibwea	60 mm	Light rains	Light rains	Light rains	Light rains	Moderate showers	Light rains	Light rains	SE at 4 m/s	
	Kanziko/Simisi	70 mm	Moderate showers	Moderate showers	Light rains	Light rains	Moderate showers	Light rains	Light rains	SE at 4 m/s	
	Mutha	50 mm	Moderate showers	Moderate showers	Light rains	Light rains	Moderate showers	Light rains	Light rains	SE at 4 m/s	
	Ikutha	70 mm	Moderate showers	Moderate showers	Light rains	Light rains	Moderate showers	Light rains	Light rains	SE at 3 m/s	

Sub County	Ward	Total weekly amount (mm)	Probable weather Notes: Light rains <1-5 mm; Moderate rains 5-20 mm; Heavy rains >20 mm							Winds (m/s meters per sec)	Temperature (°C)
			Tue	Wed	Thur	Fri	Sat	Sun	Mon		
	Athi	80 mm	<i>Moderate showers</i>	<i>Moderate showers</i>	<i>Light rains</i>	<i>Light rains</i>	<i>Moderate showers</i>	<i>Light rains</i>	<i>Light rains</i>	SE at 3 m/s	
Kitui East	Chuluni	100 mm	<i>Moderate showers</i>	<i>Moderate showers</i>	<i>Light rains</i>	<i>Light rains</i>	<i>Moderate showers</i>	<i>Light rains</i>	<i>Light rains</i>	SE at 3 m/s	Max 24-30°C Min 17-21°C
	Nzambani	100 mm	<i>Heavy showers</i>	<i>Moderate showers</i>	<i>Light rains</i>	<i>Light rains</i>	<i>Moderate showers</i>	<i>Light rains</i>	<i>Light rains</i>	SE at 3 m/s	
	Mutito/Kaliku	100 mm	<i>Heavy showers</i>	<i>Moderate showers</i>	<i>Light rains</i>	<i>Light rains</i>	<i>Moderate showers</i>	<i>Light rains</i>	<i>Light rains</i>	SE at 3 m/s	
	Zombe/Mwitika	100 mm	<i>Heavy showers</i>	<i>Moderate showers</i>	<i>Light rains</i>	<i>Light rains</i>	<i>Moderate showers</i>	<i>Light rains</i>	<i>Light rains</i>	SE at 3 m/s	
	Voo/Kyamatu	60 mm	<i>Moderate showers</i>	<i>Moderate showers</i>	<i>Light rains</i>	<i>Light rains</i>	<i>Moderate showers</i>	<i>Light rains</i>	<i>Light rains</i>	SE at 3 m/s	
	Endau/Malalani	60 mm	<i>Moderate showers</i>	<i>Moderate showers</i>	<i>Light rains</i>	<i>Light rains</i>	<i>Moderate showers</i>	<i>Light rains</i>	<i>Light rains</i>	SE at 3 m/s	

Sub County	Ward	Total weekly amount (mm)	Probable weather Notes: Light rains <1-5 mm; Moderate rains 5-20 mm; Heavy rains >20 mm							Winds (m/s meters per sec)	Temperature (°C)
			Tue	Wed	Thur	Fri	Sat	Sun	Mon		
Kitui Rural	Mbitini	80 mm	Moderate showers	Moderate showers	Light rains	Light rains	Moderate showers Max 26°C Min 18 °C	Light rains	Light rains	SE at 4 m/s	Max 25-28 °C Min 17-19 °C
	Kisasi	80 mm	Moderate showers	Moderate showers	Light rains	Light rains	Moderate showers	Light rains	Light rains	SE at 4 m/s	
	Kanyangi	70 mm	Moderate showers	Moderate showers	Light rains	Light rains	Moderate showers	Light rains	Light rains	SE at 4 m/s	
	Yatta/Kwa Vonza	70 mm	Moderate showers	Moderate showers	Light rains	Light rains	Moderate showers	Light rains	Light rains	SE at 4 m/s	
Kitui West	Kauwi	70 mm	Moderate showers	Moderate showers	Light rains	Light rains	Moderate showers	Light rains	Light rains	SE at 4 m/s	Max 24-27 °C Min 16-18 °C
	Mutonguni	80 mm	Moderate showers	Moderate showers	Light rains	Light rains	Moderate showers	Light rains	Light rains	SE at 4 m/s	
	Matinyani	90 mm	Heavy showers	Moderate showers	Light rains	Light rains	Moderate showers	Light rains	Light rains	SE at 3 m/s	
	Kwa Mutonga/It humula	80 mm	Moderate showers	Moderate showers	Light rains	Light rains	Moderate showers	Light rains	Light rains	SE at 4 m/s	

Sub County	Ward	Total weekly amount (mm)	Probable weather Notes: Light rains <1-5 mm; Moderate rains 5-20 mm; Heavy rains >20 mm							Winds (m/s meters per sec)	Temperature (°C)
			Tue	Wed	Thur	Fri	Sat	Sun	Mon		
Kitui Central	Kyangwith ya West	70 mm	<i>Moderate showers</i>	<i>Moderate showers</i>	<i>Light rains</i>	<i>Light rains</i>	<i>Moderate showers</i>	<i>Light rains</i>	<i>Light rains</i>	SE at 4 m/s	Max 24-27 °C Min 17-18 °C
	Mulango	70 mm	<i>Moderate showers</i>	<i>Moderate showers</i>	<i>Light rains</i>	<i>Light rains</i>	<i>Moderate showers</i>	<i>Light rains</i>	<i>Light rains</i>	SE at 4 m/s	
	Kyangwith ya East	80 mm	<i>Heavy showers</i>	<i>Moderate showers</i>	<i>Light rains</i>	<i>Light rains</i>	<i>Moderate showers</i>	<i>Light rains</i>	<i>Light rains</i>	SE at 4 m/s	
	Township	80 mm	<i>Heavy showers</i>	<i>Moderate showers</i>	<i>Light rains</i>	<i>Light rains</i>	<i>Moderate showers</i>	<i>Light rains</i>	<i>Light rains</i>	SE at 3 m/s	
	Miambani	100 mm	<i>Heavy showers</i>	<i>Moderate showers</i>	<i>Light rains</i>	<i>Light rains</i>	<i>Moderate showers</i>	<i>Light rains</i>	<i>Light rains</i>	SE at 4 m/s	

1.2 Weekly rain forecast map



The weather forecast for Kitui County valid: 29th November to 5th December 2022

2. PART II: Further advisories

Note: 1 mm of rainfall is equivalent to 1 litre of rainfall per square meter.

Advice to farmers from Ministry of Agriculture: Consult your local agricultural extension officer for advice on the best farming practices in the light of this forecast.

KEY OF SCIENTIFIC WORDS USED

Rainfall categories	
Range	Category
<5 mm	Light
5 - 20mm	Moderate
20 - 50mm	Heavy
>50mm	Very heavy

Rainfall coverage	
Term	Meaning
Most Places	Between 66% and 100%
Several Places	Between 33% and 66%
Few Places	Below 33%

NB: Farmers are advised to conserve enough rain water and continue weeding

For further information, please contact:



Daniel M. Mbithi
County Director of Meteorology
Mobile: 0715255171
Email: mbithi_d@yahoo.com

You can find more information about the climate and weather in Kenya on the KMD website <http://www.meteo.go.ke/>