



Kenya Meteorological Department
County Director of Meteorological Services, Kilifi
cdmkilifi@meteo.go.ke; cdmkilifi@gmail.com

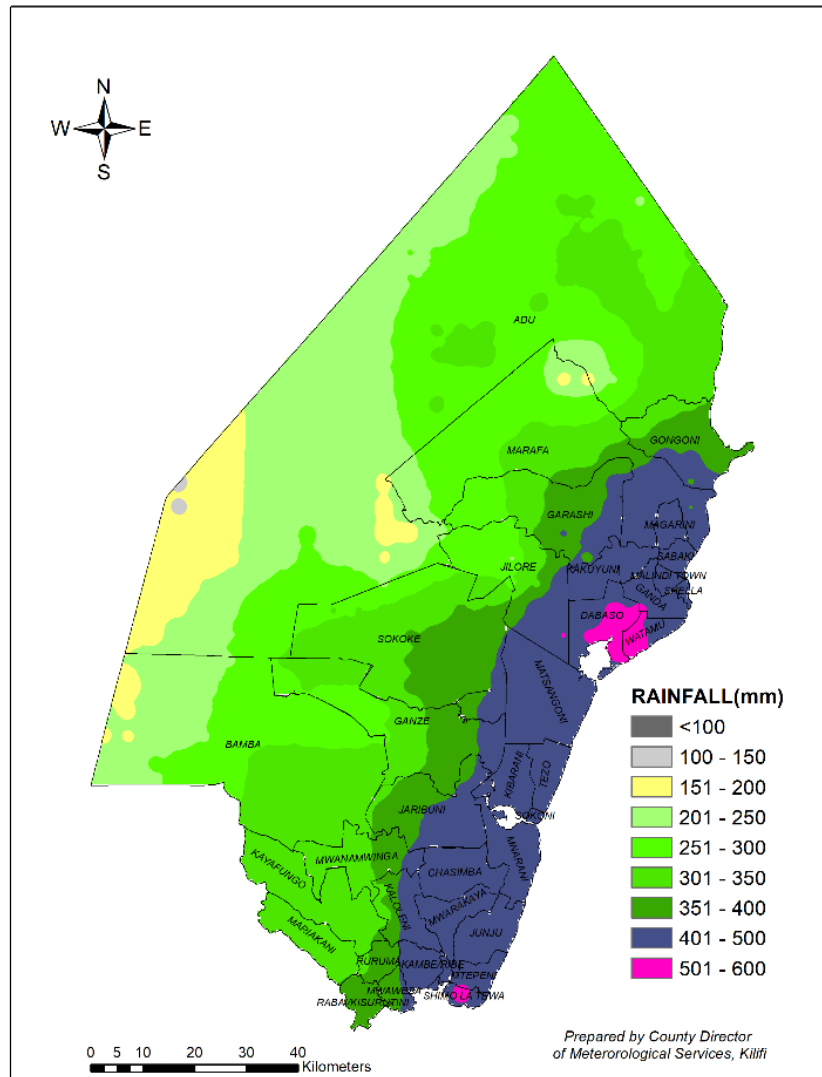
WEATHER FORECAST FOR THE MARCH-MAY 2023 RAINY SEASON FOR KLIFI COUNTY

1. Highlights

Kilifi County is expected to receive rainfall that is likely to be below the long-term average for the season (highly depressed rainfall) with late onset between 9th - 22nd April 2023 (i.e., from second to third week of April) and is expected to continue into June 2023. MAM season will be characterized by poor distribution in both space (geographically non-uniform events) and time (long dry days within the season). Warmer than normal temperatures expected.

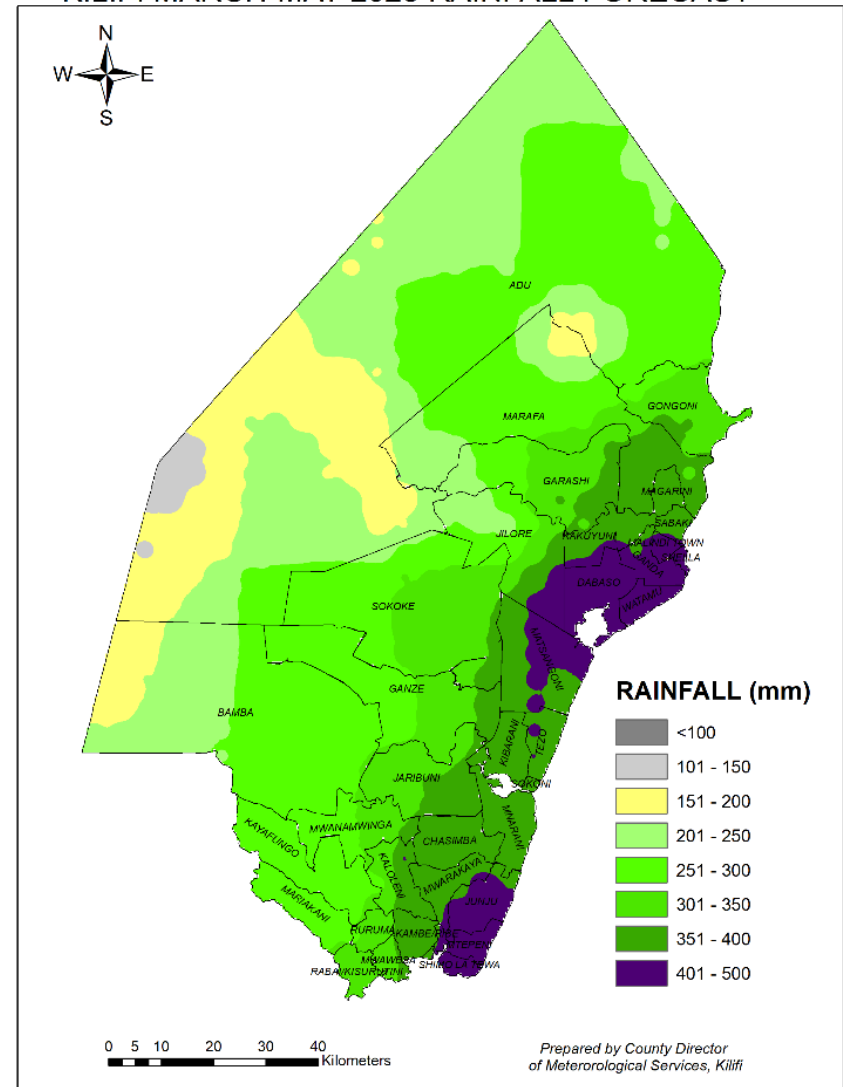
Fig.1 below is the forecast Map showing the expected spatial distribution of the MAM 2023 expected total 3-month amounts in mm. Table 1 is the same expected amounts extracted by Wards.

KILIFI MARCH-MAY LTM RAINFALL



(a)

KILIFI MARCH-MAY 2023 RAINFALL FORECAST



(b)

Figure 1. Long Term Mean (LTM) MAM rainfall (1991-2020) (a) and expected MAM 2023 rainfall (b)

2. Table 1: Summary for MAM 2023 forecast by ward

Sub-County	Ward	Probable Amount range in mm	Probable onset dates	Probable Cessation dates	LRP in days	Probable distribution
Magaraini	Marafa	West: 200-300 East : 300-400	Between 9 th – 22 nd April 2023	Between 8 th to 21 st June 2023	60-70 days	long dry spells within the rain season that could affect vulnerable crops poor spatial distribution
	Magarini	300-400				
	Gongoni	250-350				
	Adu	SW: 100-150 Central: 150-250 North: 200-300				
	Garashi	West: 200-300 East: 300-350				
	Sabaki	300-400				
Malindi	Jilore	North: 200-300 South: 300-500				
	Kakuyuni	350-400				
	Ganda	400-500				
	Malindi Town	400-500				
Kilifi South	Junju	400-500				
	Mwarakaya	300-400				
	Chasimba	300-400				
	Mtepeni	400-500				
	Shimo La Tewa	400-500				
Kilifi North	Matsangoni	South: 350-400 North: 400-500				
	Watamu	400-500				
	Mnarani	350-400				
	Tezo	350-400				
	Kibarani	350-400				
	Sokoni	350-400				
Kaloleni	Mariakani	250-300				
	Kayafungo	250-300				
	Kaloleni	300-350				
Ganze	Soko	West: 250-300 East: 300-350				
	Ganze	West: 250-300 East: 300-350				
	Jaribuni	300-400				
	Bamba	West: 150-200 Central: 200-250 East: 250-300				
	Rabai	300-350				
Rabai	Kambe/Ribe	350-400				
	Ruruma	300-350				
	Mwawesa	300-350				

3. Recommendations

i) Choosing the right crops to plant:

- To minimize risks, choose the crops whose seasonal Crop Water requirement within the lower limit value of the predicted range.
- Risk of long dry Spells within the rainy period:
 - At the moment we cannot reasonably predict the actual length of the dry spells and their impacts on various crops.
 - We therefore advise farmers to choose crops that are least vulnerable to such long dry spells
- Length of the rainy period (LRP):
 - The exact length of soil moisture is slightly higher than the LRP depending on soil type and the amount of moisture at the time of cessation.
 - Choose the crop whose length of growing period to maturity is not too far from the LRP.

ii) Onset dates versus planting dates:

1. For those wishing to dry plant, it is advisable to plant in the 1st week of the forecasted onset dates
2. For those wishing to wet plant, it is advisable to wait for the weekly weather update which is more accurate.
3. Dry or Wet Plant when the **weekly forecast** indicates at least **3 days** with rain of a total amount **greater than 20 mm**.

4. How to get Weather Updates

You can get weekly weather updates from the Counties folder in the KMD Website

<https://meteo.go.ke/node/4191>

every Monday evening or early Tuesday morning.

Kilifi County Director of Meteorological Services Mobile +254 722 890589