



Kenya Meteorological Department  
P.O. Box 30259-00100

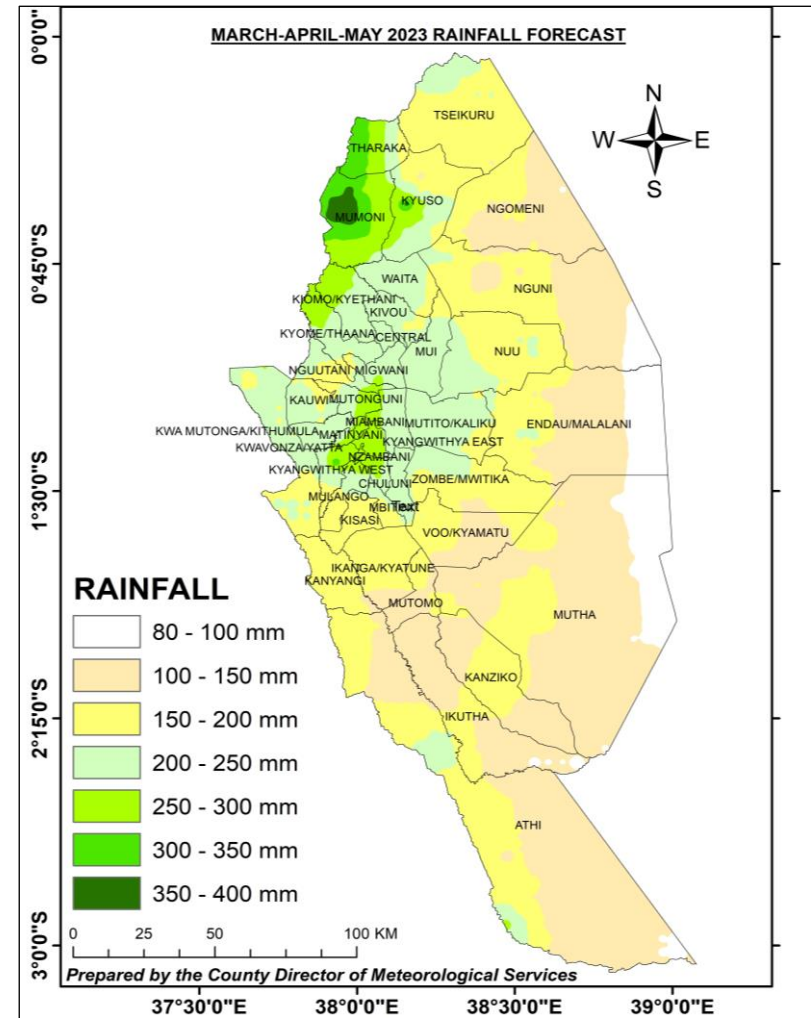
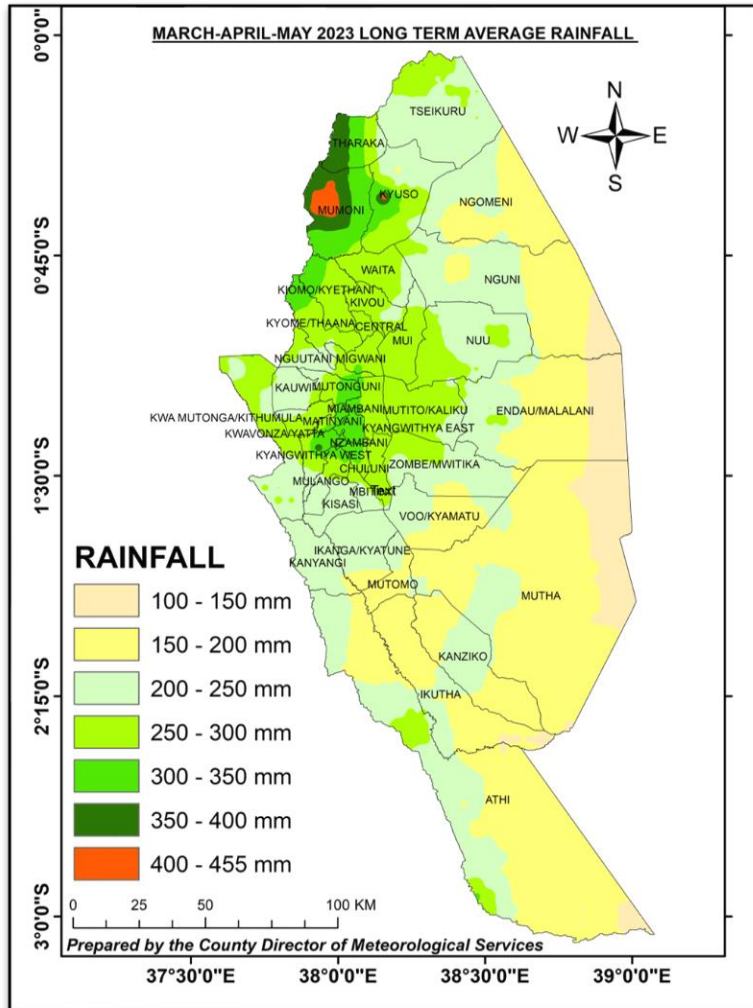
## Kitui county March-April-May (MAM 2023) Seasonal Forecast

---

### 1 Highlights

The MAM 2023 rain season is expected to be below normal with late onset (fourth week of March to first week of April) and early cessation (first to second week of May) marked with poor distribution in time and space (long dry days within season). That is to say, the rains will start between **19<sup>th</sup> and 30<sup>th</sup> March** and end between **1<sup>st</sup> and 10<sup>th</sup> May 2023**. Thus, the length of the rain period will be **30-45 days**. The map below shows the spatial distribution of the 3-month total amount of rainfall expected in the MAM 2023 season (as compared to a normal MAM season):

## 2 Probable total Seasonal Rainfall



### 3 Summary of MAM 2023 Seasonal Forecast by Ward

SN O	Sub county	Ward/ climatic zone	Seasonal Amount in mm		Probable onset dates	Probable Cessation dates	Probable Length of Rain Period	Probable distribution
			Normal (Long term mean 1991- 2020)	Forecast for MAM 2023				
1	Kitui East	Chuluni	250-300	200-250	4 <sup>th</sup> week March and 1 <sup>st</sup> week April 2023	1 <sup>st</sup> week and 2 <sup>nd</sup> week May 2023	30-45 days	Long dry spells within the rain season that could affect vulnerable crops
2		Nzambani	250-300	200-250				
3		Mutito/Kaliku	250-300	200-250				
4		Nzombe/ Mwitika	200-250	150-200				
5		Voo/Kyamatu	150-200	100-150				
6		Endau/ Malalni	150-200	100-150				
7	Kitui South	Ikanga/ kyatune	300-350	200-250				
8		Mutomo/Kib wea	300-350	200-250				
9		Kanziko/ Simisi	300-350	200-250				
10		Mutha	300-350	200-250				
11		Ikutha						
12		Athi						
13	Kitui Rural	Mbitini	250-300	200-250				
14		Kisasi	300-350	200-250				
15		Kanyangi	300-350	200-250				
16		Yatta/Kwa Vonza	300-350	200-250				
17	Mwingi West	Nguutani	200-350	150-200				
18		Kyome/ Thaana	250-300	200-250				
19		Kiomo/ Kyethani	250-300	200-250				
20		Migwani	250-300	200-250				
21	Mwingi Central	Central	250-300	200-250				
22		Kivou	250-300	200-250				
23		Waita	250-300	200-250				
24		Mui	250-300	250-300				
25		Nuu	200-250	150-200				
26		Nguni	150-200	100-150				
27	Mwingi North	Ngomeni	150-200	100-150				
28		Kyuso	200-250	150-200				
29		Tseikuru	200-250	150-200				
30		Mumoni	350-400	300-350				
31		Tharaka	300-350	250-300				
32		Kauwi	200-250	150-200				

SN O	Sub county	Ward/ climatic zone	Seasonal Amount in mm		Probable onset dates	Probable Cessation dates	Probable Length of Rain Period	Probable distribution
			Normal (Long term mean 1991- 2020)	Forecast for MAM 2023				
33		Kwa Mutonga/ Ithumula	250-300	250-300				
34		Mutonguni	300-350	250-300				
35		Matinyani	300-350	250-300				
36		Township	300-350	250-300				
37		Mulango	300-350	250-300				
38		Kyangwithya East	300-350	250-300				
39		Kyangwithya West	300-350	250-300				
40		Miambani	300-350	250-300				

## 4 Recommendations

- i) Choosing the right crops to plant:
  - To minimize risks, choose the crops whose seasonal Crop Water requirement within the lower limit value of the predicted range
  - Risk of long dry Spells within the rainy period:
    - At the moment we cannot reasonably predict the actual length of the dry spells and their impacts on various crops
    - We therefore advise farmers to choose crops that are least vulnerable to such long dry spells
  - Length of the rainy period(LRP):
    - The exact length of soil moisture is slightly higher than the LRP depending on crop type, soil type and the amount of moisture at the time of cessation.
    - Choose the crop whose length of growing period to maturity is not too far from the LRP.
- ii) Onset dates versus planting dates
  - For those wishing to dry plant, it is advisable to plant in the 1<sup>st</sup> week of the predicted onset dates
  - For those wishing to wet plant, it is advisable to wait for the weekly weather update which is more accurate
  - Dry or Wet Plant when the **weekly forecast** indicates at least **3 days** with rain of a total amount **greater than 20 mm.**

## 5 Agro-weather advisories

- To be provided at the PSP workshops
  - a) Choose the appropriate crop types and varieties
  - b) Advisories on water conservation/CA measures
  - c) Advisories on when to plant each crop type
  - d) Other agronomic advisories

# 6 Kitui Wards Map

