



*For further info:*  
 Contact Daniel M. Mbithi  
 Mobile No. 0715255171  
 Email: mbithi\_d@yahoo.com  
 County director of Meteorological Services Kitui County

### Weekly weather forecast for Kitui County

#### 1. PART I: WEEKLY FORECAST FOR THE PERIOD 7th to 13th Mar 2023

##### 1.1 Weather forecast Table

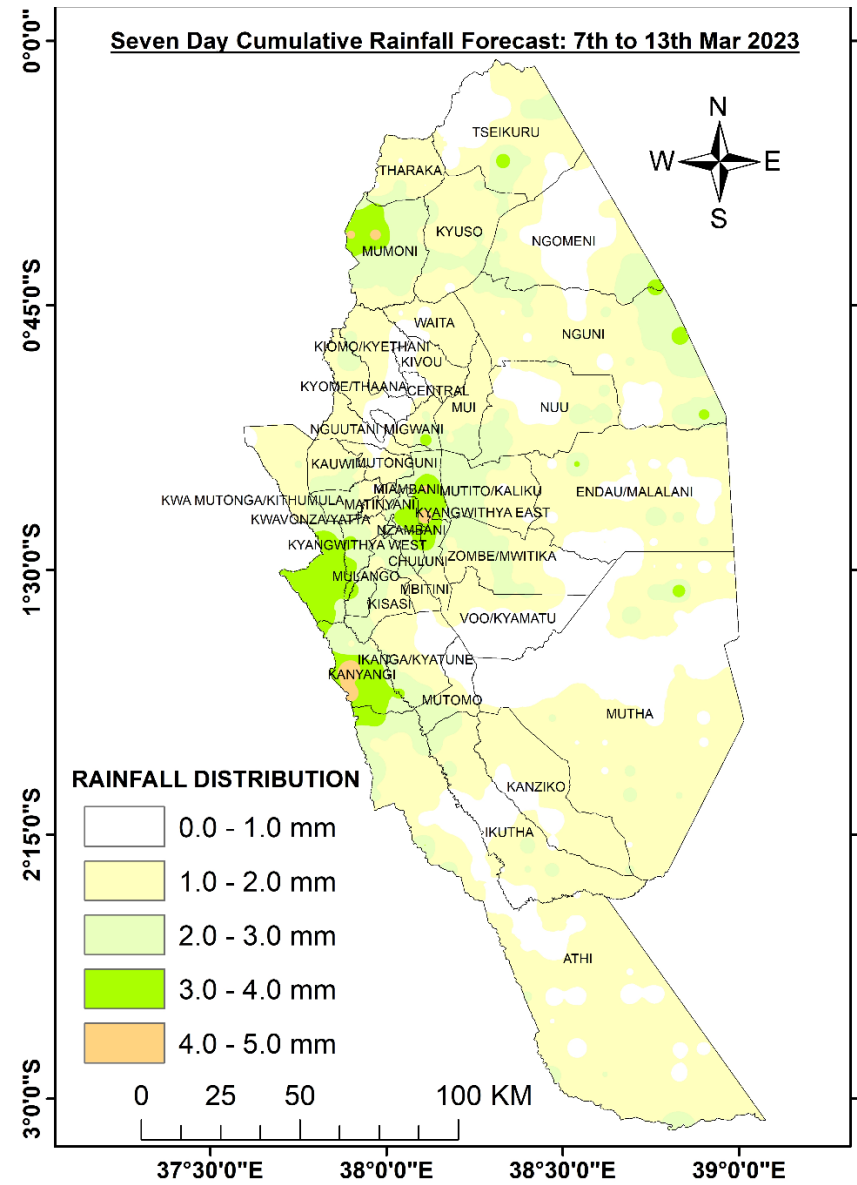
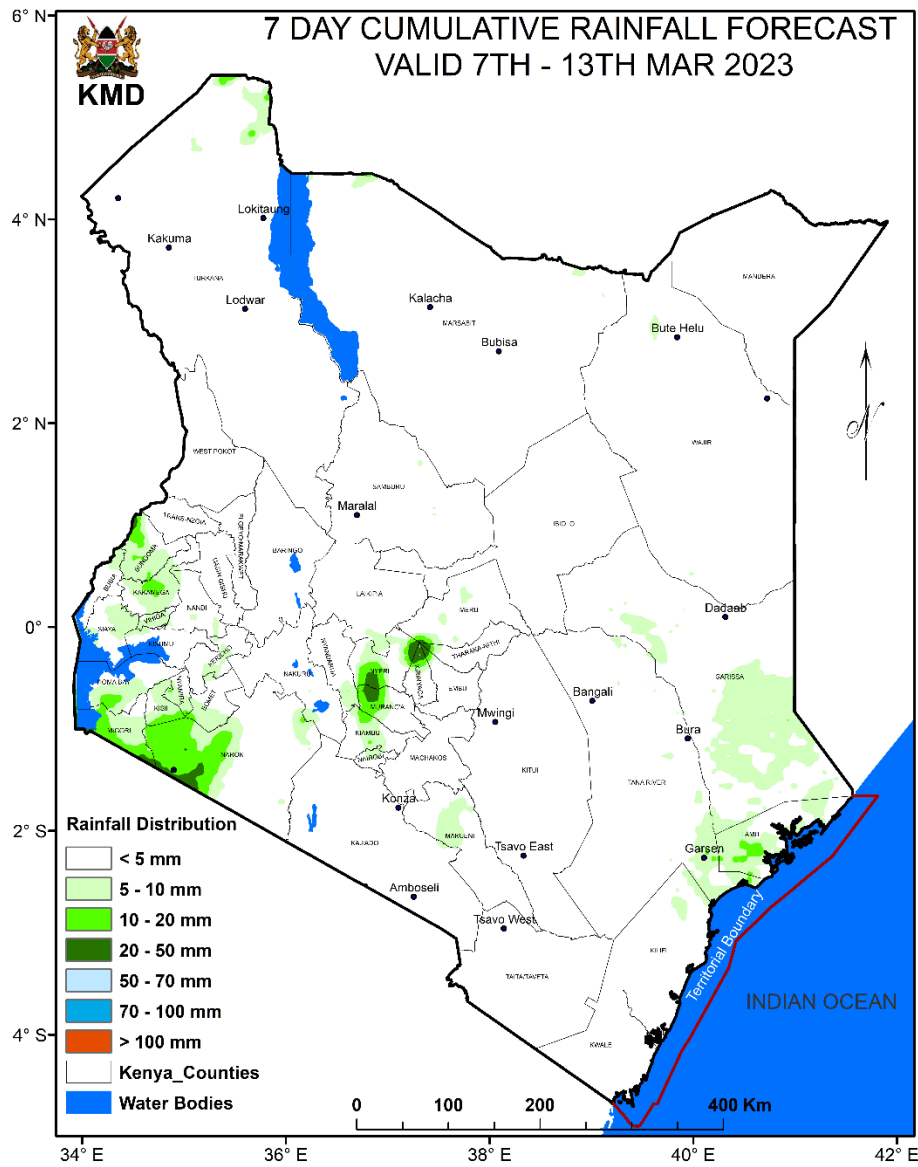
Sub County	Ward	Total weekly amount (mm)	Probable weather Notes: Light rains <1-5 mm; Moderate rains 5-20 mm; Heavy rains >20 mm							Winds (km/h kilometers per hour)	Temp (Tmax °C & Tmin °C)
			Tue	Wed	Thur	Fri	Sat	Sun	Mon		
Mwingi West	Nguutani	6.2 mm	Dry day	Dry day	Dry day	Dry day	Light rains	Light rains	Light rains	EASTERLY at 14.4 km/h	Max 28-31 °C Min 18-19 °C
	Kyome/Thaana	6.7 mm	Dry day	Dry day	Dry day	Dry day	Light rains	Light rains	Light rains	EASTERLY at 14.4 km/h	Max 28-31 °C Min 18-19 °C
	Kiomo/Kyethani	6 mm	Dry day	Dry day	Dry day	Dry day	Light rains	Light rains	Light rains	EASTERLY at 14.4 km/h	Max 30-33 °C Min 19-21 °C
	Migwani	4.5 mm	Dry day	Dry day	Dry day	Dry day	Light rains	Light rains	Light rains	EASTERLY at 14.4 km/h	Max 30-33 °C Min 19-21 °C

Sub County	Ward	Total weekly amount (mm)	Probable weather Notes: Light rains <1-5 mm; Moderate rains 5-20 mm; Heavy rains >20 mm							Winds (km/h kilometers per hour)	Temp (Tmax °C & Tmin °C)
			Tue	Wed	Thur	Fri	Sat	Sun	Mon		
Mwingi North	Ngomeni	3.2 mm	Dry day	Dry day	Dry day	Dry day	Light rains	Light rains	Light rains	EASTERLY at 14.4 km/h	Max 33-35 °C Min 21-23 °C
	Kyuso	4.5 mm	Dry day	Dry day	Dry day	Dry day	Light rains	Light rains	Light rains	EASTERLY at 14.4 km/h	Max 30-33 °C Min 20-21 °C
	Tseikuru	12.5 mm	Dry day	Dry day	Dry day	Dry day	Moderate rains	Moderate rains	Light rains	EASTERLY at 13.4 km/h	Max 32-36 °C Min 20-24 °C
	Tharaka	17.8 mm	Dry day	Dry day	Dry day	Dry day	Light rains	Moderate rains	Light rains	EASTERLY at 14.4 km/h	Max 32-36 °C Min 20-23 °C
	Mumoni	6.7 mm	Dry day	Dry day	Dry day	Dry day	Light rains	Light rains	Light rains	EASTERLY at 14.4 km/h	Max 30-33 °C Min 20-21 °C
Mwingi Central	Central	3.5 mm	Dry day	Dry day	Dry day	Dry day	Light rains	Light rains	Light rains	EASTERLY at 14.4 km/h	Max 30-33 °C Min 19-21 °C
	Kivou	3.5 mm	Dry day	Dry day	Dry day	Dry day	Light rains	Light rains	Light rains	EASTERLY at 14.4 km/h	Max 30-33 °C Min 19-21 °C
	Mui	5.3 mm	Dry day	Dry day	Dry day	Dry day	Light rains	Light rains	Light rains	EASTERLY at 10.8 km/h	Max 31-33 °C Min 20-21 °C
	Waita	4.6 mm	Dry day	Dry day	Dry day	Dry day	Light rains	Light rains	Light rains	EASTERLY at 14.4 km/h	Max 30-33 °C Min 19-21 °C
	Nuu	3.2 mm	Dry day	Dry day	Dry day	Dry day	Light rains	Light rains	Light rains	EASTERLY at 14.4 km/h	Max 33-35 °C Min 21-23 °C
	Nguni	3.9 mm	Dry day	Dry day	Dry day	Dry day	Light rains	Light rains	Light rains	EASTERLY at 14.4 km/h	Max 33-35 °C Min 21-23 °C
Kitui South	Ikanga/Kyatune	4.2 mm	Dry day	Dry day	Dry day	Dry day	Light rains	Light rains	Light rains	EASTERLY at 14.4 km/h	Max 31-33 °C Min 19-21 °C
	Mutomo/Kibwea	3.3 mm	Dry day	Dry day	Dry day	Dry day	Light rains	Light rains	Light rains	EASTERLY at 14.4 km/h	Max 31-33 °C Min 19-21 °C
	Kanziko/Simisi	3.7 mm	Dry day	Dry day	Dry day	Dry day	Light rains	Light rains	Light rains	EASTERLY at 14.4 km/h	Max 33-34 °C Min 20-22 °C

Sub County	Ward	Total weekly amount (mm)	Probable weather Notes: Light rains <1-5 mm; Moderate rains 5-20 mm; Heavy rains >20 mm							Winds (km/h kilometers per hour)	Temp (Tmax °C & Tmin °C)
			Tue	Wed	Thur	Fri	Sat	Sun	Mon	Weekly	Weekly
Sub County	Mutha	3.2 mm	Dry day	Dry day	Dry day	Dry day	Light rains	Light rains	Light rains	EASTERLY at 14.4 km/h	Max 33-34 °C Min 20-22 °C
	Ikutha	5.1 mm	Dry day	Dry day	Dry day	Dry day	Light rains	Light rains	Light rains	EASTERLY at 14.4 km/h	Max 31-33 °C Min 19-21 °C
	Athi	3.5 mm	Dry day	Dry day	Dry day	Dry day	Light rains	Light rains	Light rains	EASTERLY at 14.4 km/h	Max 32-34 °C Min 20-24 °C
Kitui East	Chuluni	7.2 mm	Dry day	Dry day	Dry day	Dry day	Light rains	Light rains	Light rains	EASTERLY at 14.4 km/h	Max 28-31 °C Min 18-20 °C
	Nzambani	7.7 mm	Dry day	Dry day	Dry day	Dry day	Light rains	Light rains	Light rains	EASTERLY at 14.4 km/h	Max 29-32 °C Min 18-20 °C
	Mutito/Kaliku	6.5 mm	Dry day	Dry day	Dry day	Dry day	Light rains	Light rains	Light rains	EASTERLY at 10.8 km/h	Max 32-34 °C Min 20-22 °C
	Zombe/Mwitika	6.3 mm	Dry day	Dry day	Dry day	Dry day	Light rains	Light rains	Light rains	EASTERLY at 14.4 km/h	Max 33-34 °C Min 21-23 °C
	Voo/Kyamatu	3 mm	Dry day	Dry day	Dry day	Dry day	Light rains	Light rains	Light rains	EASTERLY at 14.4 km/h	Max 34-35 °C Min 22-23 °C
	Endau/Malalani	2.6 mm	Dry day	Dry day	Dry day	Dry day	Light rains	Light rains	Light rains	EASTERLY at 13.8 km/h	Max 33-35 °C Min 22-23 °C
Kitui Rural	Mbitini	5.3 mm	Dry day	Dry day	Dry day	Dry day	Light rains	Light rains	Light rains	EASTERLY at 18 km/h	Max 29-31 °C Min 17-19 °C
	Kisasi	6.6 mm	Dry day	Dry day	Dry day	Dry day	Light rains	Light rains	Light rains	EASTERLY at 14.4 km/h	Max 29-32 °C Min 18-20 °C
	Kanyangi	4.2 mm	Dry day	Dry day	Dry day	Dry day	Light rains	Light rains	Light rains	EASTERLY at 14.4 km/h	Max 30-32 °C Min 18-20 °C

Sub County	Ward	Total weekly amount (mm)	Probable weather Notes: Light rains <1-5 mm; Moderate rains 5-20 mm; Heavy rains >20 mm							Winds (km/h kilometers per hour)	Temp (Tmax °C & Tmin °C)
			Tue	Wed	Thur	Fri	Sat	Sun	Mon	Weekly	Weekly
	Yatta/Kwa Vonza	7.4 mm	Dry day	Dry day	Dry day	Dry day	Light rains	Light rains	Light rains	EASTERLY at 14.4 km/h	Max 29-33 °C Min 18-20 °C
Kitui West	Kauwi	5.8 mm	Dry day	Dry day	Dry day	Dry day	Light rains	Light rains	Light rains	EASTERLY at 14.4 km/h	Max 32-34 °C Min 20-22 °C
	Mutonguni	5.8 mm	Dry day	Dry day	Dry day	Dry day	Light rains	Light rains	Light rains	EASTERLY at 14.4 km/h	Max 28-31 °C Min 17-19 °C
	Matinyani	6 mm	Dry day	Dry day	Dry day	Dry day	Light rains	Light rains	Light rains	EASTERLY at 14.4 km/h	Max 28-31 °C Min 17-19 °C
	Kwa Mutonga/Ithumula	6 mm	Dry day	Dry day	Dry day	Dry day	Light rains	Light rains	Light rains	EASTERLY at 14.4 km/h	Max 29-32 °C Min 17-20 °C
Kitui Central	Kyangwithya East	6.4 mm	Dry day	Dry day	Dry day	Dry day	Light rains	Light rains	Light rains	EASTERLY at 14.4 km/h	Max 29-32 °C Min 18-20 °C
	Kyangwithya West	6.4 mm	Dry day	Dry day	Dry day	Dry day	Light rains	Light rains	Light rains	EASTERLY at 14.4 km/h	Max 29-32 °C Min 18-20 °C
	Mulango	7.2 mm	Dry day	Dry day	Dry day	Dry day	Light rains	Light rains	Light rains	EASTERLY at 14.4 km/h	Max 28-31 °C Min 18-20 °C
	Township	7.2 mm	Dry day	Dry day	Dry day	Dry day	Light rains	Light rains	Light rains	EASTERLY at 14.4 km/h	Max 28-31 °C Min 18-20 °C
	Miambani	8.2 mm	Dry day	Dry day	Dry day	Dry day	Light rains	Light rains	Light rains	EASTERLY at 14.4 km/h	Max 30-33 °C Min 20-21 °C

## 1.2 Weekly National and County rain forecast maps



The weather forecast for Kenya and Kitui County valid: 7th to 13th Mar 2023

## 2. PART II: Further advisories

### Summary

The County is expected to experience generally dry, hot and dusty conditions during the forecast period. However, there is a chance of early morning light rains over several areas towards the end of the forecast period. Maximum temperatures are expected to range from 28°C - 36°C, while minimum temperatures are expected to range from 17°C - 24°C. Tseikuru, Tharaka, Ngomeni, Nuu, Nguni, Voo/Kyamatu & Endau/Malalani wards are likely to register the hottest days and nights of 35-36°C and 23-24°C respectively during the forecast period. Strong easterly winds with speeds exceeding 25knots (46.4km/h) are likely to occur over few places in Kitui County. **Farmers are advised to consult with respective local ward agricultural extension officers (WAES) from the County Ministry of Agriculture for advice on the best farm practices about CA and DTCs in readiness for the Long Rains (MAM 2023) onset in light of this weather forecast.**

**Note: 1 mm of rainfall is equivalent to 1 litre of rainfall per square meter.**

#### KEY OF SCIENTIFIC WORDS USED

Rainfall categories	
Range	Category
<2 mm	Light
5 - 20mm	Moderate
20 - 50mm	Heavy
>50mm	Very heavy

Rainfall coverage	
Term	Meaning
Most Places	Between 66% and 100%
Several Places	Between 33% and 66%
Few Places	Below 33%

**NB: Farmers are advised to take advantage of the high temperature levels and wind up harvesting and drying their crops in readiness for the MAM 2023 onset.**

**For further information, please contact:**



Daniel M. Mbithi  
County Director of Meteorology  
Mobile: 0715255171  
Email: [mbithi\\_d@yahoo.com](mailto:mbithi_d@yahoo.com)

You can find more information about the climate and weather in Kenya on the KMD website <http://www.meteo.go.ke/>