

**MAKUENI COUNTY MARCH-APRIL-MAY 2023 SEASONAL  
FORECAST**

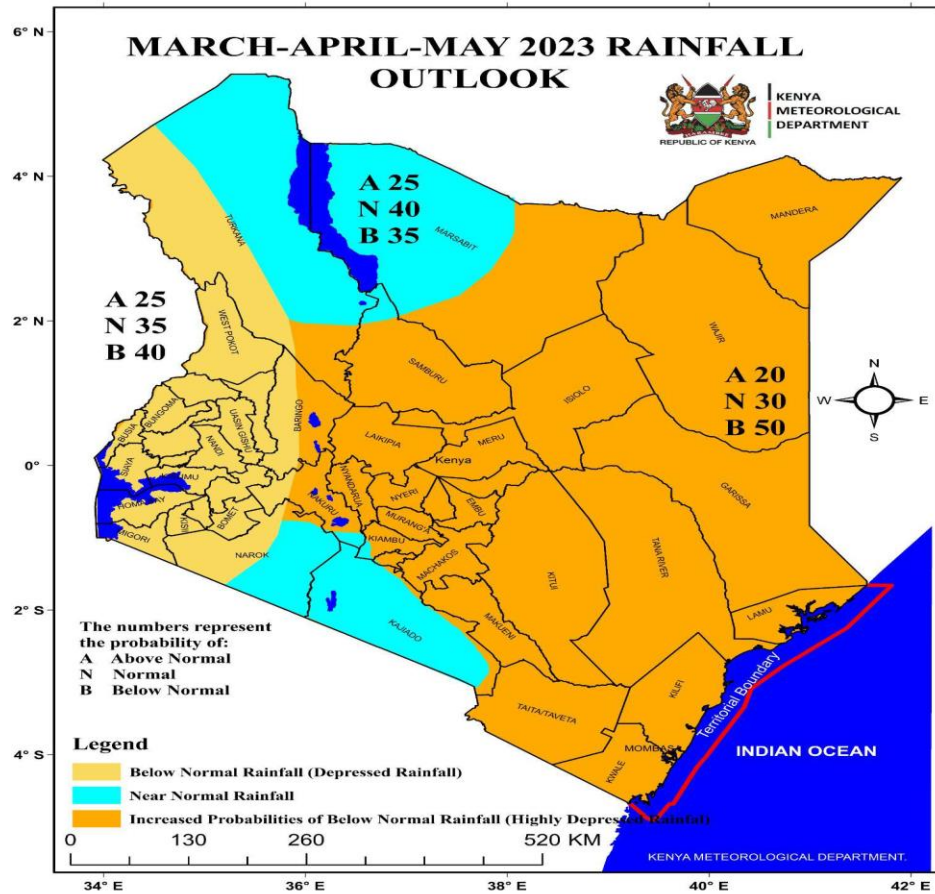
**BY**

**JONATHAN NGAYAI**

**COUNTY DIRECTOR OF METEOROLOGICAL SERVICES**

**MAKUENI COUNTY**

# NATIONAL MAM 2023 LONG RAINS SEASONAL FORECAST



# REVIEW OF THE OND 2022 SHORT RAINS SEASON

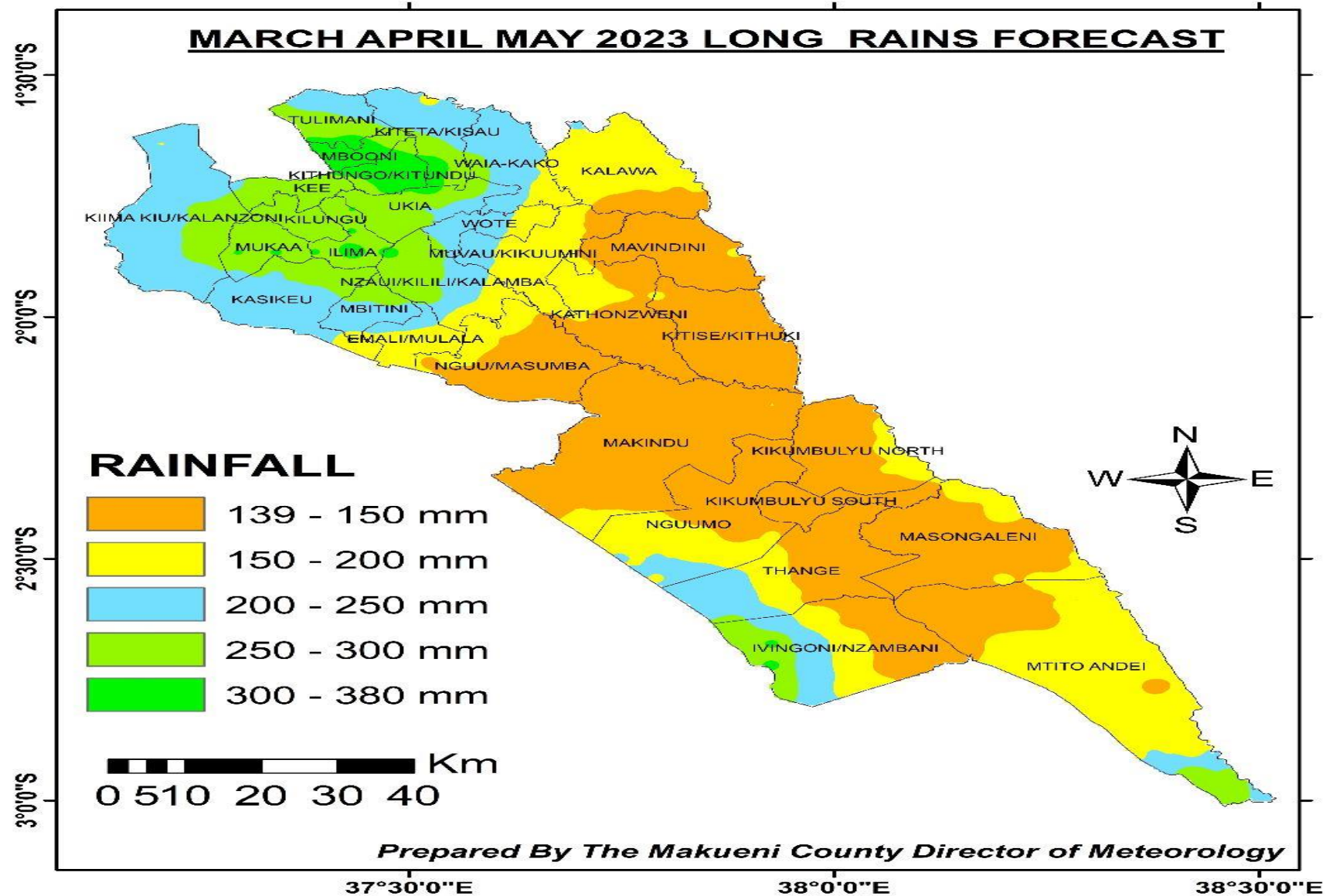
- The OND 2022 Seasonal rains onset was delayed.
- The onset(start) was on the 1<sup>st</sup> to 15<sup>th</sup> of November 2022
- Cessation(stop) was the 9<sup>th</sup> to 15<sup>th</sup> of December 2022.
- The distribution of the seasonal rains was poor both in time and space.
- The season was generally characterized by long dry spells which had implications on the planted crops.
- Some parts of Kiima Kiu/Kalanzoni ward did not realize onset at all (Response interventions ongoing).

# EXPECTED MARCH –APRIL - MAY 2023 LONG RAINS SEASONAL FORECAST - HIGHLIGHTS

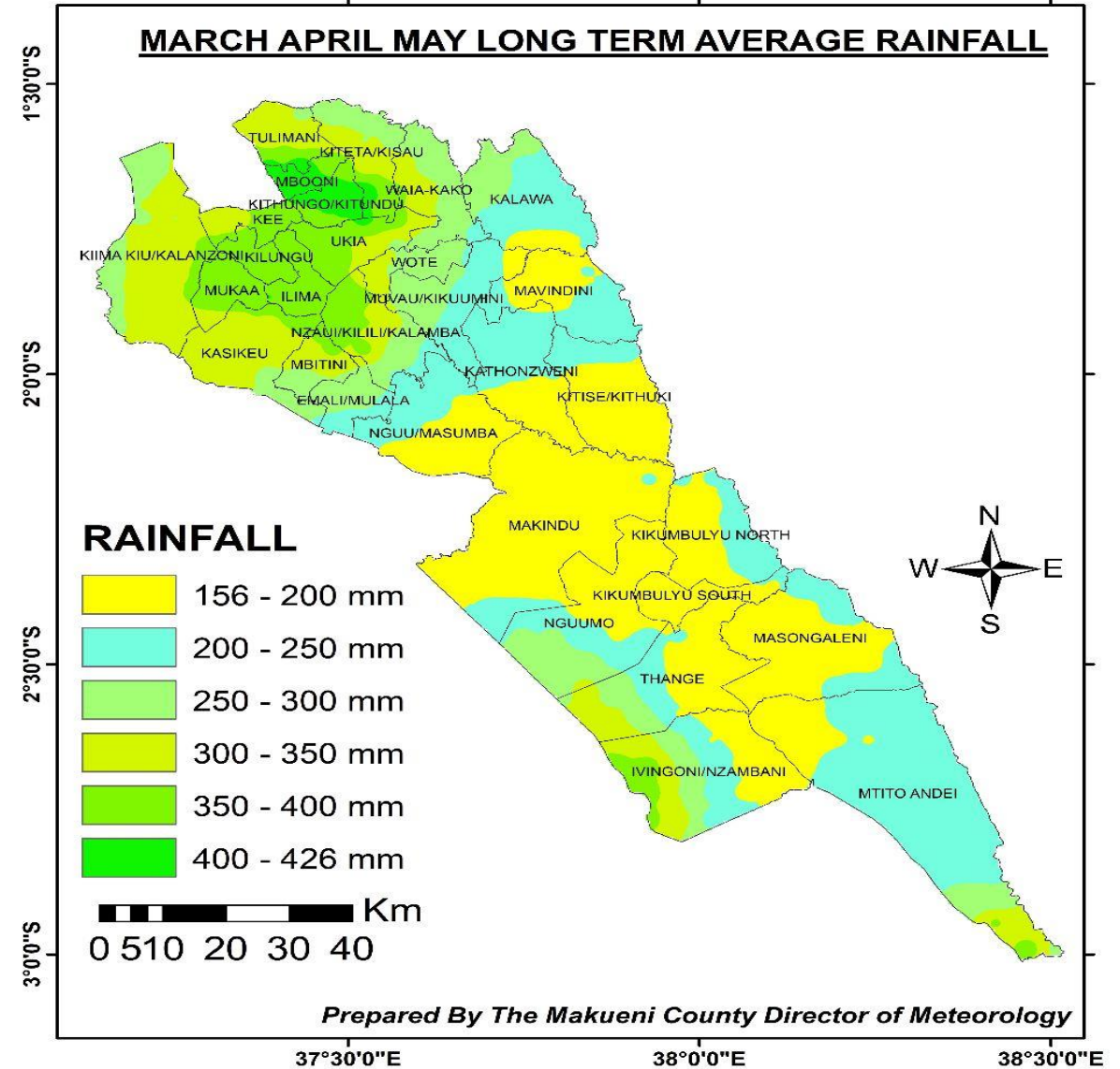
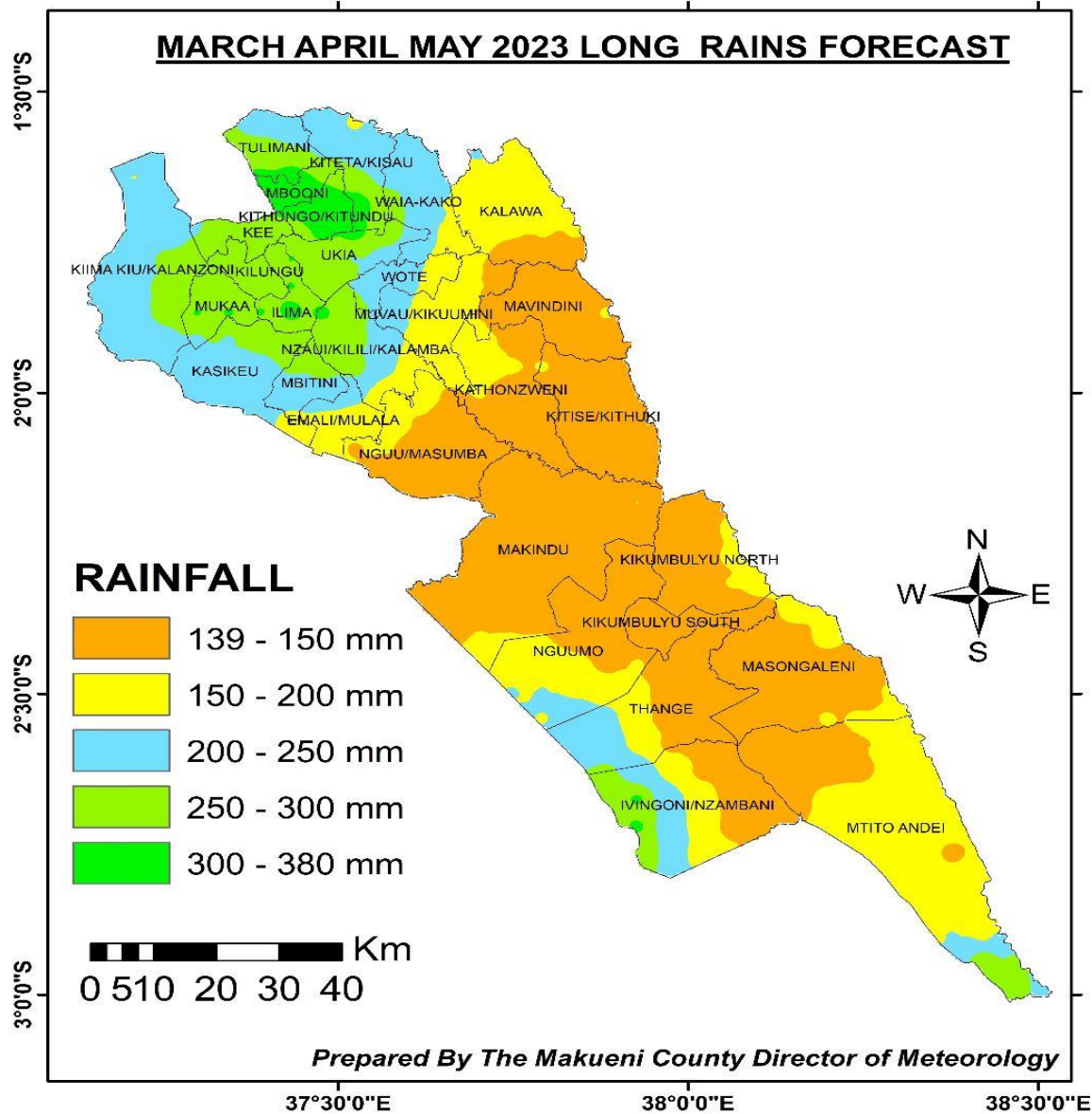
- Onset is expected between 1<sup>st</sup> to 14<sup>th</sup> April 2023
- Distribution expected to be poor both in time and space
- Occasional storms are likely to occur during the season
- Dry spells are expected within the season.
- Peak rainfall expected in the month of April 2023
- Cessation expected between 14<sup>th</sup> to 21<sup>st</sup> May 2023.

***NB:*** A cyclone christened Freddy developed off the coast of Australian coast and crossed the entire south Indian Ocean. Its current activity in Mozambique/Malagasy area could change the given forecast. A cyclone can change all the above factors positively or negatively depending on its strength, path and duration. In case this happens, an update will be issued.

# EXPECTED MARCH-APRIL-MAY 2023 LONG RAINS SEASONAL FORECAST



# EXPECTED MARCH-APRIL-MAY 2023 LONG RAINS SEASON Compared to LONG TERM AVERAGE RAINFALL



# EXPECTED ONSET AND CESSATION DATES

ITEM	<b>UPPER ZONES</b>  (WARDS: Mbooni, Kithungo/Kitundu, Kilungu, Mukaa, Mbitini	<b>MIDDLE ZONES</b>  (Wards: Tulimani, Kako/Waia, Kisau/Kiteta, Kasikeu. Kiima/Kiu, Kalamba, Emali/Mulala, Wote, Muvau/Kikumini	<b>LOWER ZONES</b> (Wards: Makindu, Nguu/Masumba, Kalawa, Kikumbulyu South, Kikumbulyu North, Nguumo, Thange, Nzambani/Ivingoni, Mavindini, Kathonzweni, Kitise/Kithuki, Masongaleni, Mtito Andei
AMOUNT RANGE	300-380 mm	200-300 mm	139-250 mm
ONSET DATES	1 <sup>st</sup> to 15 <sup>th</sup> April 2023	1 <sup>st</sup> to 15 <sup>th</sup> April 2023	1 <sup>st</sup> to 15 <sup>th</sup> April 2023
CESSATION DATES	14 <sup>th</sup> to 21 <sup>st</sup> May 2023	14 <sup>th</sup> to 21 <sup>st</sup> May 2023	14 <sup>th</sup> to 21 <sup>st</sup> May 2023
DISTRIBUTION	Seasonal rainfall distribution is expected to be poor both in time and space	Seasonal rainfall distribution is expected to be poor both in time and space	Seasonal rainfall distribution is expected to be poor both in time and space



# Thank you

[kmdmakuenicounty@gmail.com](mailto:kmdmakuenicounty@gmail.com)

Or [ingayai@yahoo.com](mailto:ingayai@yahoo.com)

+254795929926

+254721527936