



For further info:
 Contact Daniel M. Mbithi
 Mobile No. 0715255171
 Email: mbithi_d@yahoo.com
 County Director of Meteorological Services Kitui County

Weekly Weather forecast for Kitui County

1. PART I: WEEKLY FORECAST FOR THE PERIOD 30th May to 5th June 2023

1.1 Weather forecast Table

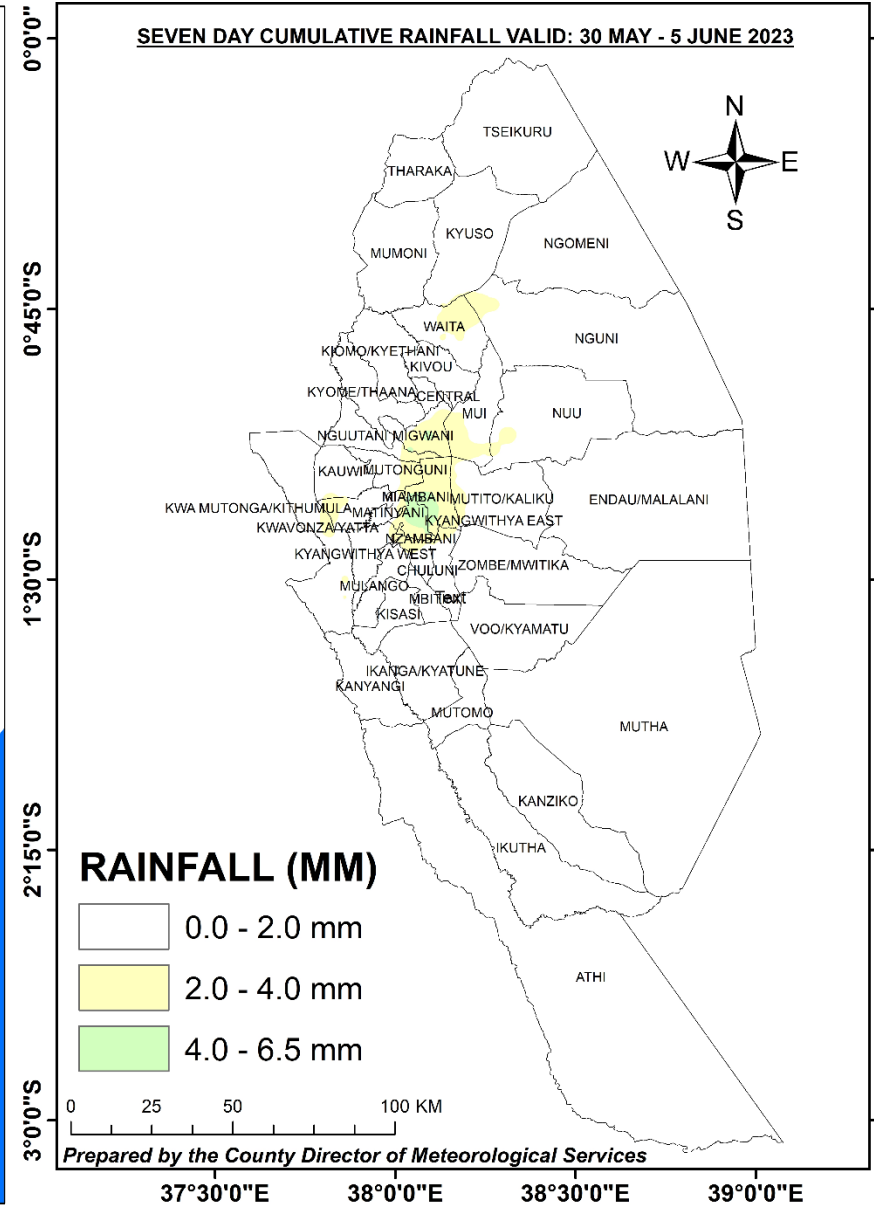
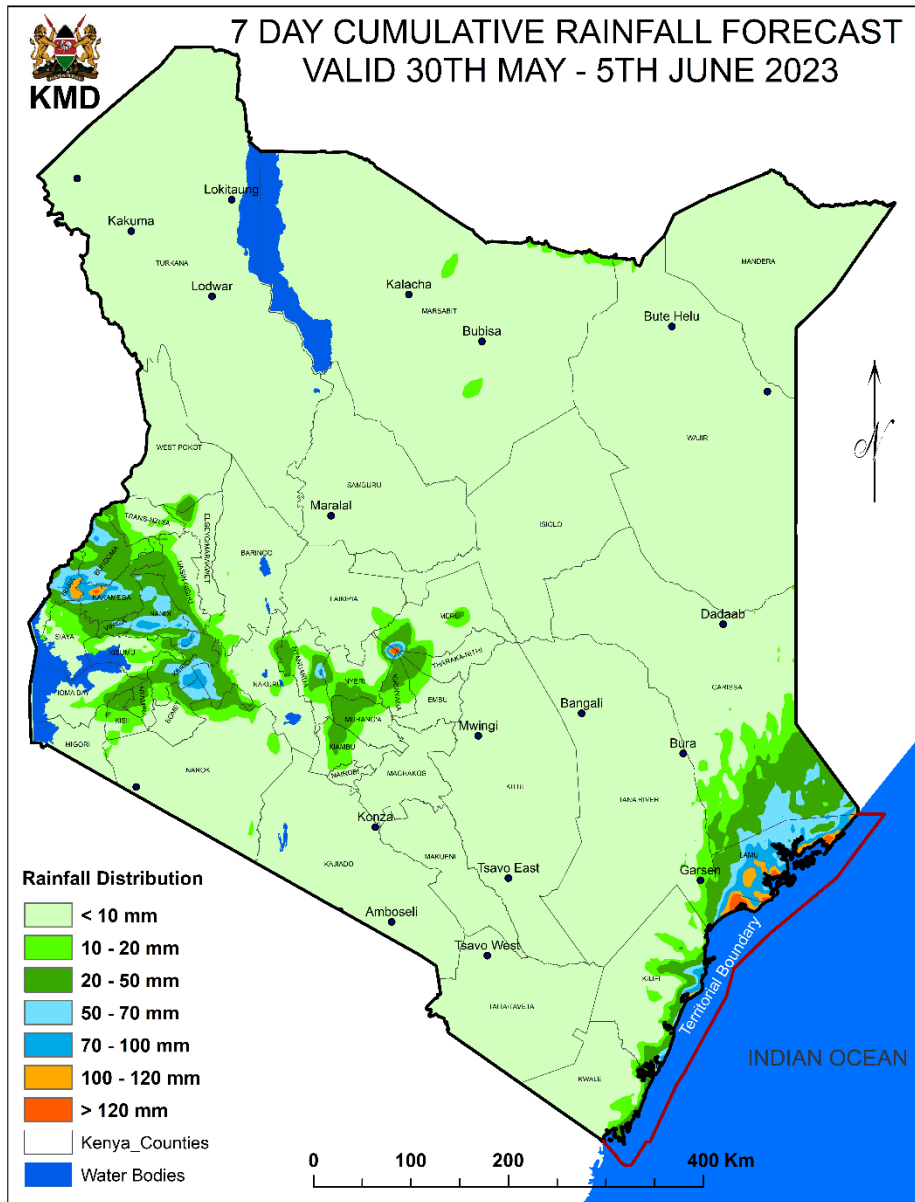
Sub County	Ward	Probable Total weekly amount (mm)	Probable weather							Winds (km/h kilometers per hour)	Temp (Tmax °C & Tmin °C)
			Notes: Light rains <1-5 mm; Moderate rains 5-20 mm; Heavy rains >20 mm								
			Tue	Wed	Thur	Fri	Sat	Sun	Mon	Weekly	Weekly
Mwingi West	Nguutani	5-10 mm	Light rains	Dry day	Dry day	Dry day	Light rains	Light rains	Dry day	EASTERLY at 18.0 km/h	Max 25-28 °C Min 16-18 °C
	Kyome/Thaana	5-10 mm	Light rains	Dry day	Dry day	Dry day	Light rains	Light rains	Dry day	EASTERLY at 18.0 km/h	Max 25-28 °C Min 16-18 °C
	Kiomo/Kyethani	5-10 mm	Light rains	Dry day	Dry day	Dry day	Light rains	Light rains	Dry day	EASTERLY at 18.0 km/h	Max 25-28 °C Min 16-18 °C
	Migwani	5-10 mm	Light rains	Dry day	Dry day	Dry day	Dry day	Light rains	Dry day	EASTERLY at 21.6 km/h	Max 27-30 °C Min 17-19 °C

Sub County	Ward	Probable Total weekly amount (mm)	Probable weather Notes: Light rains <1-5 mm; Moderate rains 5-20 mm; Heavy rains >20 mm							Winds (km/h kilometers per hour)	Temp (Tmax °C & Tmin °C)
			Tue	Wed	Thur	Fri	Sat	Sun	Mon	Weekly	Weekly
Mwingi North	Ngomeni	<5 mm	<i>Light rains</i>	<i>Dry day</i>	<i>Dry day</i>	<i>Dry day</i>	<i>Light rains</i>	<i>Light rains</i>	<i>Dry day</i>	EASTERLY at 21.6 km/h	Max 30-33 °C Min 19-21 °C
	Kyuso	<5 mm	<i>Dry day</i>	<i>Dry day</i>	<i>Dry day</i>	<i>Dry day</i>	<i>Dry day</i>	<i>Dry day</i>	<i>Dry day</i>	EASTERLY at 21.6 km/h	Max 28-31 °C Min 18-19 °C
	Tseikuru	5-10 mm	<i>Light rains</i>	<i>Dry day</i>	<i>Dry day</i>	<i>Dry day</i>	<i>Light rains</i>	<i>Dry day</i>	<i>Dry day</i>	EASTERLY at 18 km/h	Max 31-34 °C Min 21-23 °C
	Tharaka	5-10 mm	<i>Dry day</i>	<i>Dry day</i>	<i>Dry day</i>	<i>Dry day</i>	<i>Light rains</i>	<i>Dry day</i>	<i>Dry day</i>	EASTERLY at 14.4 km/h	Max 31-33 °C Min 20-22 °C
	Mumoni	5-10 mm	<i>Light rains</i>	<i>Dry day</i>	<i>Dry day</i>	<i>Dry day</i>	<i>Light rains</i>	<i>Light rains</i>	<i>Dry day</i>	EASTERLY at 18 km/h	Max 28-31 °C Min 19-20 °C
Mwingi Central	Central	5-10 mm	<i>Light rains</i>	<i>Dry day</i>	<i>Dry day</i>	<i>Dry day</i>	<i>Light rains</i>	<i>Light rains</i>	<i>Dry day</i>	EASTERLY at 18 km/h	Max 28-30 °C Min 18-20 °C
	Kivou	5-10 mm	<i>Light rains</i>	<i>Dry day</i>	<i>Dry day</i>	<i>Dry day</i>	<i>Light rains</i>	<i>Light rains</i>	<i>Dry day</i>	EASTERLY at 18 km/h	Max 29-30 °C Min 18-20 °C
	Mui	<5 mm	<i>Dry day</i>	<i>Dry day</i>	<i>Dry day</i>	<i>Dry day</i>	<i>Light rains</i>	<i>Dry day</i>	<i>Dry day</i>	EASTERLY at 18 km/h	Max 28-31 °C Min 18-20 °C
	Waita	5-10 mm	<i>Light rains</i>	<i>Dry day</i>	<i>Dry day</i>	<i>Dry day</i>	<i>Light rains</i>	<i>Light rains</i>	<i>Dry day</i>	EASTERLY at 18 km/h	Max 27-30 °C Min 17-19 °C
	Nuu	5-10 mm	<i>Dry day</i>	<i>Dry day</i>	<i>Light rains</i>	<i>Dry day</i>	<i>Light rains</i>	<i>Light rains</i>	<i>Dry day</i>	EASTERLY at 18 km/h	Max 30-33 °C Min 20-21 °C
	Nguni	<5 mm	<i>Light rains</i>	<i>Dry day</i>	<i>Light rains</i>	<i>Dry day</i>	<i>Light rains</i>	<i>Dry day</i>	<i>Dry day</i>	EASTERLY at 18 km/h	Max 30-32 °C Min 19-21 °C
Kitui South	Ikanga/Kyatune	<5 mm	<i>Light rains</i>	<i>Dry day</i>	<i>Dry day</i>	<i>Dry day</i>	<i>Light rains</i>	<i>Light rains</i>	<i>Dry day</i>	EASTERLY at 14.4 km/h	Max 28-31 °C Min 18-20 °C
	Mutomo/Kibwea	5-10 mm	<i>Light rains</i>	<i>Dry day</i>	<i>Dry day</i>	<i>Light rains</i>	<i>Light rains</i>	<i>Light rains</i>	<i>Dry day</i>	EASTERLY at 14.4 km/h	Max 28-32 °C Min 18-20 °C
	Kanziko/Simisi	5-10 mm	<i>Dry day</i>	<i>Dry day</i>	<i>Dry day</i>	<i>Light rains</i>	<i>Light rains</i>	<i>Light rains</i>	<i>Dry day</i>	EASTERLY at 14.4 km/h	Max 29-33 °C Min 18-20 °C

Sub County	Ward	Probable Total weekly amount (mm)	Probable weather Notes: Light rains <1-5 mm; Moderate rains 5-20 mm; Heavy rains >20 mm							Winds (km/h kilometers per hour)	Temp (Tmax °C & Tmin °C)
			Tue	Wed	Thur	Fri	Sat	Sun	Mon		
	Mutha	5-10 mm	Dry day	Dry day	Dry day	Light rains	Light rains	Dry day	Dry day	EASTERLY at 18 km/h	Max 29-33 °C Min 19-21 °C
	Ikutha	<5 mm	Dry day	Dry day	Dry day	Light rains	Light rains	Light rains	Dry day	EASTERLY at 14.4 km/h	Max 28-32 °C Min 18-19 °C
	Athi	<5 mm	Dry day	Dry day	Dry day	Light rains	Light rains	Light rains	Dry day	EASTERLY at 14.4 km/h	Max 29-33 °C Min 19-20 °C
Kitui East	Chuluni	10-15 mm	Light rains	Dry day	Dry day	Light rains	Moderate rains	Light rains	Dry day	EASTERLY at 14.4 km/h	Max 25-28 °C Min 16-18 °C
	Nzambani	10-15 mm	Light rains	Dry day	Dry day	Light rains	Moderate rains	Light rains	Dry day	EASTERLY at 14.4 km/h	Max 26-29 °C Min 17-18 °C
	Mutito/Kaliku	10-15 mm	Light rains	Dry day	Light rains	Light rains	Moderate rains	Light rains	Dry day	EASTERLY at 14.4 km/h	Max 29-33 °C Min 18-20 °C
	Zombe/Mwitika	5-10 mm	Light rains	Dry day	Dry day	Light rains	Light rains	Dry day	Dry day	EASTERLY at 14.4 km/h	Max 30-32 °C Min 20-21 °C
	Voo/Kyamatu	<5 mm	Dry day	Dry day	Dry day	Dry day	Light rains	Dry day	Dry day	EASTERLY at 18 km/h	Max 30-34 °C Min 19-21 °C
	Endau/Malalani	5-10 mm	Dry day	Dry day	Dry day	Dry day	Light rains	Light rains	Dry day	EASTERLY at 18 km/h	Max 30-33 °C Min 19-22 °C
Kitui Rural	Mbitini	10-15 mm	Light rains	Dry day	Dry day	Light rains	Light rains	Dry day	Dry day	EASTERLY at 14.4 km/h	Max 26-28 °C Min 16-17 °C
	Kisasi	10-15 mm	Light rains	Dry day	Dry day	Dry day	Light rains	Light rains	Dry day	EASTERLY at 14.4 km/h	Max 26-29 °C Min 17-19 °C
	Kanyangi	5-10 mm	Light rains	Dry day	Dry day	Dry day	Light rains	Light rains	Dry day	EASTERLY at 14.4 km/h	Max 27-29 °C Min 16-18 °C
	Yatta/Kwa Vonza	10-15 mm	Light rains	Dry day	Dry day	Light rains	Light rains	Light rains	Dry day	EASTERLY at 14.4 km/h	Max 26-29 °C Min 17-18 °C
Kitui West	Kauwi	5-10 mm	Light rains	Dry day	Dry day	Dry day	Light rains	Light rains	Dry day	EASTERLY at 18 km/h	Max 24-28 °C Min 16-17 °C

Sub County	Ward	Probable Total weekly amount (mm)	Probable weather Notes: Light rains <1-5 mm; Moderate rains 5-20 mm; Heavy rains >20 mm							Winds (km/h kilometers per hour)	Temp (Tmax °C & Tmin °C)
			Tue	Wed	Thur	Fri	Sat	Sun	Mon	Weekly	Weekly
	Mutonguni	5-10 mm	<i>Light rains</i>	<i>Dry day</i>	<i>Dry day</i>	<i>Dry day</i>	<i>Light rains</i>	<i>Light rains</i>	<i>Dry day</i>	EASTERLY at 18 km/h	Max 24-28 °C Min 16-17 °C
	Matinyani	5-10 mm	<i>Light rains</i>	<i>Dry day</i>	<i>Dry day</i>	<i>Dry day</i>	<i>Light rains</i>	<i>Light rains</i>	<i>Dry day</i>	EASTERLY at 18 km/h	Max 25-28 °C Min 16-17 °C
	Kwa Mutonga/Ithumula	5-10 mm	<i>Light rains</i>	<i>Dry day</i>	<i>Dry day</i>	<i>Dry day</i>	<i>Light rains</i>	<i>Light rains</i>	<i>Dry day</i>	EASTERLY at 18 km/h	Max 26-29 °C Min 16-18 °C
Kitui Central	Kyangwithya East	5-10 mm	<i>Light rains</i>	<i>Dry day</i>	<i>Dry day</i>	<i>Dry day</i>	<i>Light rains</i>	<i>Light rains</i>	<i>Dry day</i>	EASTERLY at 14.4 km/h	Max 25-29 °C Min 17-18 °C
	Kyangwithya West	5-10 mm	<i>Light rains</i>	<i>Dry day</i>	<i>Dry day</i>	<i>Dry day</i>	<i>Light rains</i>	<i>Light rains</i>	<i>Dry day</i>	EASTERLY at 14.4 km/h	Max 25-29 °C Min 17-18 °C
	Mulango	10-15 mm	<i>Light rains</i>	<i>Dry day</i>	<i>Dry day</i>	<i>Light rains</i>	<i>Light rains</i>	<i>Light rains</i>	<i>Dry day</i>	EASTERLY at 14.4 km/h	Max 25-28 °C Min 16-18 °C
	Township	10-15 mm	<i>Light rains</i>	<i>Dry day</i>	<i>Dry day</i>	<i>Light rains</i>	<i>Light rains</i>	<i>Light rains</i>	<i>Dry day</i>	EASTERLY at 14.4 km/h	Max 25-28 °C Min 16-18 °C
	Miambani	10-15 mm	<i>Light rains</i>	<i>Dry day</i>	<i>Light rains</i>	<i>Light rains</i>	<i>Moderate rains</i>	<i>Light rains</i>	<i>Dry day</i>	EASTERLY at 14.4 km/h	Max 28-30 °C Min 18-20 °C

1.2 Weekly National and County rain forecast maps



The weather forecast for Kenya and Kitui County valid: 30th May to 5th June 2023

2. PART II: Further advisories

Summary

The County is expected to experience generally dry conditions during the forecast period. There is a low chance of early morning light rains over high ground areas during the forecast period. Maximum temperatures are expected to range from 25°C - 34°C, while minimum temperatures are expected to range from 16°C - 23°C. May is expected to be the cessation month for the MAM season. ***In light of this weather forecast, farmers are advised to consult with respective local ward agricultural extension officers (WAES) from the County Ministry of Agriculture for advice on the best farm practices as the “Long-rains” (MAM 2023) continue to reduce.***

Note: 1 mm of rainfall is equivalent to 1 litre of rainfall per square meter.

KEY OF SCIENTIFIC WORDS USED

Rainfall categories	
Range	Category
<2 mm	Light
5 - 20mm	Moderate
20 - 50mm	Heavy
>50mm	Very heavy

Rainfall coverage	
Term	Meaning
Most Places	Between 66% and 100%
Several Places	Between 33% and 66%
Few Places	Below 33%

Ushauri wa Idara ya Utabiri wa Hali ya Hewa:
Wiki hii hakuna uwezekano wa mvua ya maana katika Kaunti ya Kitui. Vile vile, msimu wa mvua za Masika (MAM) unaonekana umeisha na hivyo basi msimu wa baridi (JJA) unaonekana umeanza kuwadia.

For further information, please contact:



Daniel M. Mbithi
County Director of Meteorology
Mobile: 0715255171
Email: mbithi_d@yahoo.com

You can find more information about the climate and weather in Kenya on the KMD website <http://www.meteo.go.ke/>