



For further info:
Contact Daniel M. Mbithi
Mobile No. 0715255171
Email: mbithi_d@yahoo.com
County Director of Meteorological Services Kitui County

Weekly weather forecast for Kitui County

1. PART I: WEEKLY FORECAST FOR THE PERIOD 23rd to 29th May 2023

1.1 Weather forecast Table

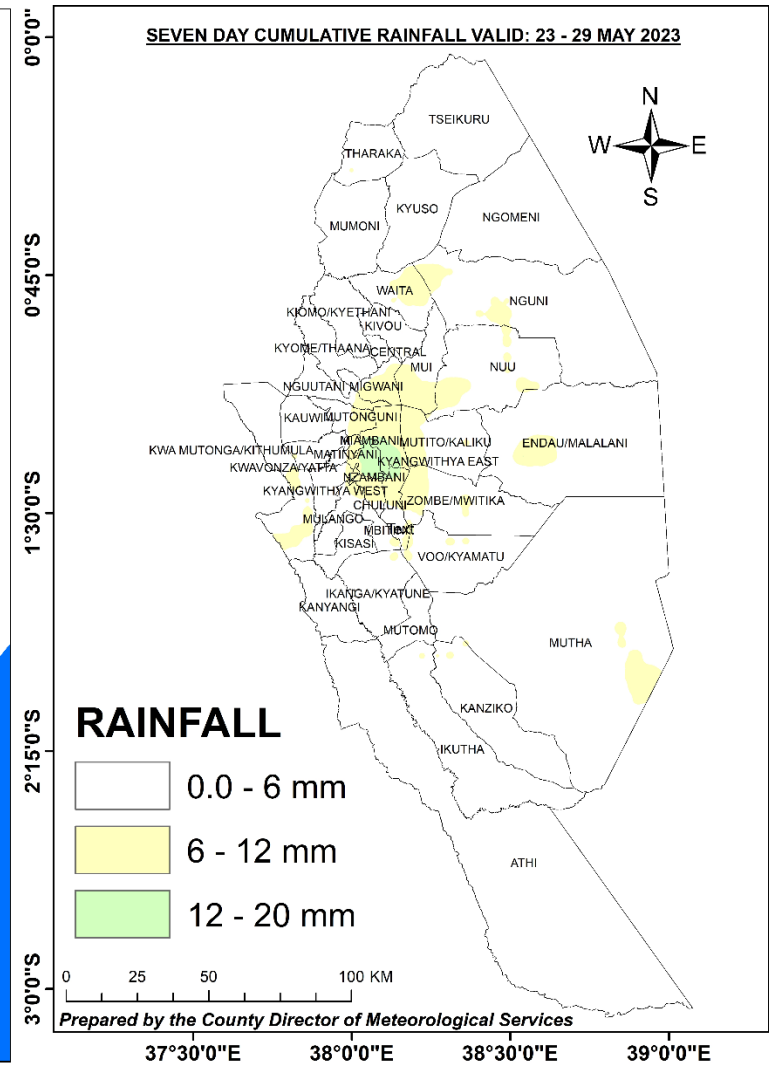
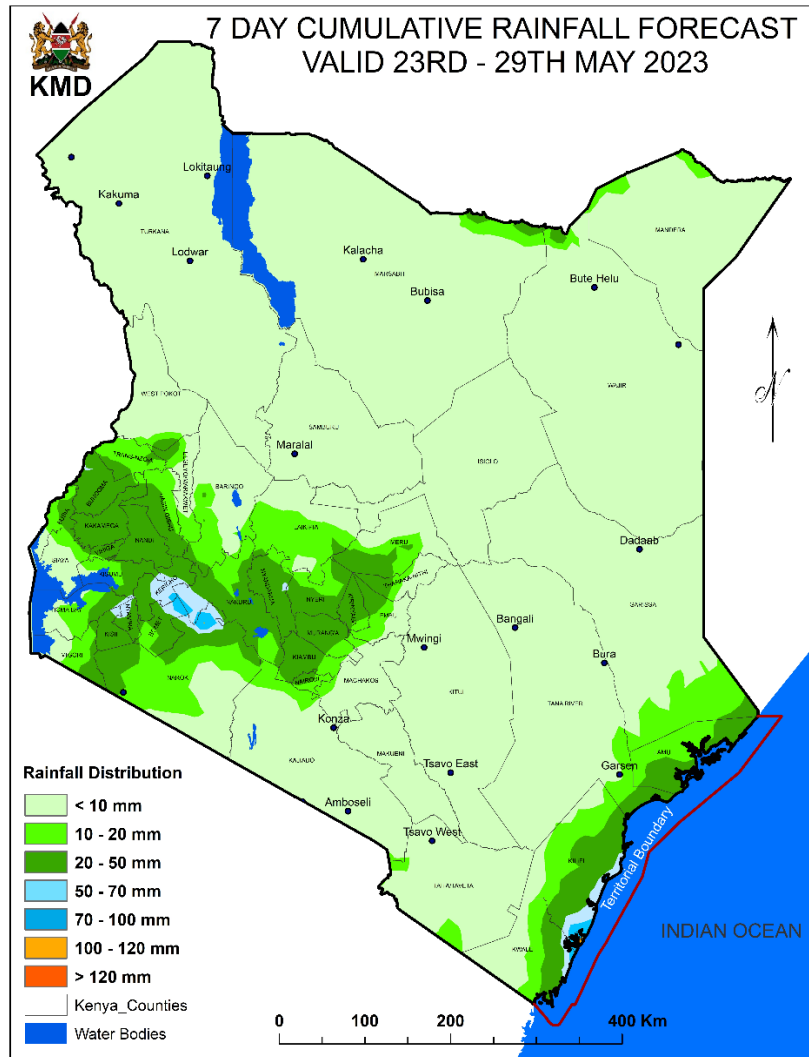
Sub County	Ward	Probable weather							Probable Total weekly amount (mm)	Rainfall cessation date
		Notes: Light rains <1-5 mm; Moderate rains 5-20 mm; Heavy rains >20 mm								
		Tue	Wed	Thur	Fri	Sat	Sun	Mon	Weekly	MAM
Mwingi West	Nguutani	Light rains	Light rains	Dry day	Light rains	Light rains	Light rains	Light rains	10-15 mm	Fourth week April
	Kyome/Thaana	Light rains	Light rains	Light rains	Light rains	Light rains	Light rains	Light rains	10-15 mm	Fourth week April
	Kiomo/Kyethani	Light rains	Light rains	Light rains	Light rains	Light rains	Light rains	Dry day	15-20 mm	First week May
	Migwani	Light rains	Dry day	Light rains	Light rains	Dry day	Light rains	Dry day	5-10 mm	Fourth week April
Mwingi North	Ngomeni	Light rains	Dry day	Light rains	Light rains	Light rains	Light rains	Dry day	10-15 mm	Fourth week April

Sub County	Ward	Probable weather Notes: Light rains <1-5 mm; Moderate rains 5-20 mm; Heavy rains >20 mm							Probable Total weekly amount (mm)	Rainfall cessation date
		Tue	Wed	Thur	Fri	Sat	Sun	Mon	Weekly	MAM
	Kyuso	Light rains	Dry day	Dry day	Light rains	Light rains	Dry day	Dry day	5-10 mm	Fourth week April
	Tseikuru	Moderate showers	Dry day	Dry day	Light rains	Light rains	Light rains	Dry day	15-20 mm	Fourth week April
	Tharaka	Moderate showers	Dry day	Light rains	Light rains	Dry day	Light rains	Dry day	15-20 mm	Fourth week April
	Mumoni	Light rains	Dry day	Dry day	Light rains	Light rains	Light rains	Dry day	5-10 mm	Fourth week April
Mwingi Central	Central	Dry day	Light rains	Light rains	Light rains	Light rains	Light rains	Dry day	10-15 mm	Fourth week April
	Kivou	Dry day	Light rains	Light rains	Light rains	Light rains	Light rains	Dry day	10-15 mm	Fourth week April
	Mui	Light rains	Light rains	Moderate showers	Light rains	Light rains	Light rains	Light rains	20-25 mm	Fourth week April
	Waita	Light rains	Light rains	Light rains	Light rains	Light rains	Light rains	Dry day	10-15 mm	Fourth week April
	Nuu	Light rains	Light rains	Light rains	Light rains	Light rains	Light rains	Light rains	15-20 mm	Fourth week April
	Nguni	Light rains	Light rains	Light rains	Light rains	Light rains	Light rains	Light rains	10-15 mm	Fourth week April
Kitui South	Ikanga/Kyatune	Light rains	Light rains	Dry day	Light rains	Light rains	Light rains	Light rains	10-15 mm	Fourth week April
	Mutomo/Kibwea	Light rains	Light rains	Dry day	Light rains	Light rains	Dry day	Light rains	5-10 mm	Fourth week April
	Kanziko/Simisi	Light rains	Light rains	Dry day	Light rains	Light rains	Light rains	Light rains	10-15 mm	Fourth week April
	Mutha	Dry day	Light rains	Light rains	Light rains	Light rains	Dry day	Light rains	10-15 mm	First week May
	Ikutha	Light rains	Light rains	Dry day	Dry day	Light rains	Light rains	Light rains	10-15 mm	Fourth week April
	Athi	Dry day	Light rains	Dry day	Dry day	Light rains	Dry day	Dry day	5-10 mm	Fourth week April
Kitui East	Chuluni	Light rains	Moderate showers	Light rains	Light rains	Light rains	Light rains	Moderate showers	30-35 mm	Fourth week April

Sub County	Ward	Probable weather Notes: Light rains <1-5 mm; Moderate rains 5-20 mm; Heavy rains >20 mm							Probable Total weekly amount (mm)	Rainfall cessation date
		Tue	Wed	Thur	Fri	Sat	Sun	Mon	Weekly	MAM
	Nzambani	Light rains	Light rains	Light rains	Light rains	Light rains	Light rains	Moderate showers	30-35 mm	Fourth week April
	Mutito/Kaliku	Light rains	Moderate showers	Moderate showers	Light rains	Light rains	Light rains	Moderate showers	30-35 mm	Fourth week April
	Zombe/Mwitika	Light rains	Light rains	Light rains	Light rains	Light rains	Light rains	Moderate showers	30-35 mm	Fourth week April
	Voo/Kyamatu	Dry day	Light rains	Dry day	Light rains	Light rains	Dry day	Moderate showers	15-20 mm	Fourth week April
	Endau/Malalani	Light rains	Light rains	Light rains	Light rains	Light rains	Dry day	Light rains	10-15 mm	Fourth week April
	Kitui Rural	Mbitini	Light rains	Light rains	Light rains	Light rains	Light rains	Light rains	Moderate showers	20-25 mm
Kisasi		Light rains	Light rains	Light rains	Light rains	Light rains	Light rains	Moderate showers	25-30 mm	Fourth week April
Kanyangi		Light rains	Light rains	Dry day	Light rains	Light rains	Light rains	Light rains	5-10 mm	First week May
Yatta/Kwa Vonza		Light rains	Light rains	Light rains	Light rains	Light rains	Light rains	Moderate showers	20-25 mm	First week May
Kitui West	Kauwi	Light rains	Light rains	Light rains	Light rains	Light rains	Light rains	Light rains	10-15 mm	Fourth week April
	Mutonguni	Light rains	Light rains	Light rains	Light rains	Light rains	Light rains	Light rains	10-15 mm	Fourth week April
	Matinyani	Light rains	Light rains	Light rains	Light rains	Light rains	Light rains	Moderate showers	20-25 mm	Fourth week April
	Kwa Mutonga/Ithumula	Light rains	Light rains	Light rains	Light rains	Light rains	Light rains	Moderate showers	20-25 mm	Fourth week April
Kitui Central	Kyangwithya East	Light rains	Light rains	Light rains	Light rains	Light rains	Light rains	Moderate showers	25-30 mm	Fourth week April

Sub County	Ward	Probable weather							Probable Total weekly amount (mm)	Rainfall cessation date
		Notes: Light rains <1-5 mm; Moderate rains 5-20 mm; Heavy rains >20 mm								
		Tue	Wed	Thur	Fri	Sat	Sun	Mon	Weekly	MAM
	Kyangwithya West	Light rains	Light rains	Light rains	Light rains	Light rains	Light rains	Moderate showers	25-30 mm	Fourth week April
	Mulango	Light rains	Moderate rains	Light rains	Light rains	Light rains	Light rains	Moderate rains	30-35 mm	Fourth week April
	Township	Light rains	Moderate rains	Light rains	Light rains	Light rains	Light rains	Moderate rains	30-35 mm	Fourth week April
	Miambani	Light rains	Moderate rains	Moderate rains	Light rains	Light rains	Light rains	Moderate rains	30-35 mm	Fourth week April

1.2 Weekly National and County rain forecast maps



The weather forecast for Kenya and Kitui County valid: 23rd to 29th May 2023

2. PART II: Further advisories

Summary

The County is expected to continue experiencing a general reduction of wet conditions during the forecast period with a chance of getting light to moderate rains over several places. Maximum temperatures are expected to range from 24°C - 33°C, while minimum temperatures are expected to range from 14°C - 22°C. Normally, May is expected to be the cessation month for the MAM season. ***In light of this weather forecast, farmers are advised to consult with respective local ward agricultural extension officers (WAES) from the County Ministry of Agriculture for advice on the best farm practices as the “Long-rains” (MAM 2023) comes to an END.***

Note: 1 mm of rainfall is equivalent to 1 litre of rainfall per square meter.

KEY OF SCIENTIFIC WORDS USED

Rainfall categories	
Range	Category
<2 mm	Light
5 - 20mm	Moderate
20 - 50mm	Heavy
>50mm	Very heavy

Rainfall coverage	
Term	Meaning
Most Places	Between 66% and 100%
Several Places	Between 33% and 66%
Few Places	Below 33%

NB: Farmers are advised to conserve enough rain water, store sufficient pasture, continue weeding and managing crop diseases/pests.

For further information, please contact:



Daniel M. Mbithi
County Director of Meteorology
Mobile: 0715255171
Email: mbithi_d@yahoo.com

You can find more information about the climate and weather in Kenya on the KMD website
<http://www.meteo.go.ke/>