



REPUBLIC OF KENYA
MINISTRY OF ENVIRONMENT AND FORESTRY

KENYA METEOROLOGICAL DEPARTMENT

County Meteorological services, Embu

P.O. Box 171-60100 Embu, Kenya

Tel: +254705252469

e-mail: cdmembu@meteo.go.ke, cdmembu@gmail.com

Website: <http://www.meteo.go.ke>

Ref: MET/EBU/2/SEASONAL/22-09-2023

Issue Date: 22/09/2023

EMBU COUNTY WEATHER OUTLOOK FOR THE OCTOBER-NOVEMBER-DECEMBER (OND) 2023 SEASON

1. HIGHLIGHTS

1.1 Outlook for October-November-December (OND) 2023 Season

- Above-normal (enhanced) rainfall is expected over the entire County of Embu.
- The seasonal rainfall onset is expected during the 1st to 2nd week of October 2023 and the rains are expected to continue into January 2024.
- Generally, the OND rainfall is expected to have a fair to good distribution in both time and space in Embu County
- Probability of above-normal rainfall is 75%, normal 15% and below-normal 10%.

This will be driven by warmer than average Sea Surface Temperatures (SSTs) over the Central and Eastern Equatorial Pacific Ocean indicating the presence of El Nino conditions. According to most of the global climate models, El Nino conditions are likely to persist throughout the OND. However, the forecast may be affected by development of Tropical Cyclones in the western Indian Ocean and that is why all sectors are advised to follow weekly weather updates from this office.

2. FORECAST FOR OCTOBER-NOVEMBER-DECEMBER (OND) 2023 “SHORT-RAINS” SEASON IN EMBU COUNTY

All wards of the County are likely to experience **above normal/Long Term Means(LTM) (enhanced) rainfall** during October-November-December (OND) 2023 rainfall season as shown in Figure 1 and Figure 2. The rainfall distribution is expected to be fair to good both in time and space. The differences of LTM from the OND 2023 Forecast and the probabilities of receiving less than 300mm of rainfall are as shown in Figure 3 and Figure 4 respectively. The likelihood of above-normal rainfall is 75%, normal 15% and below-normal 10% respectively.

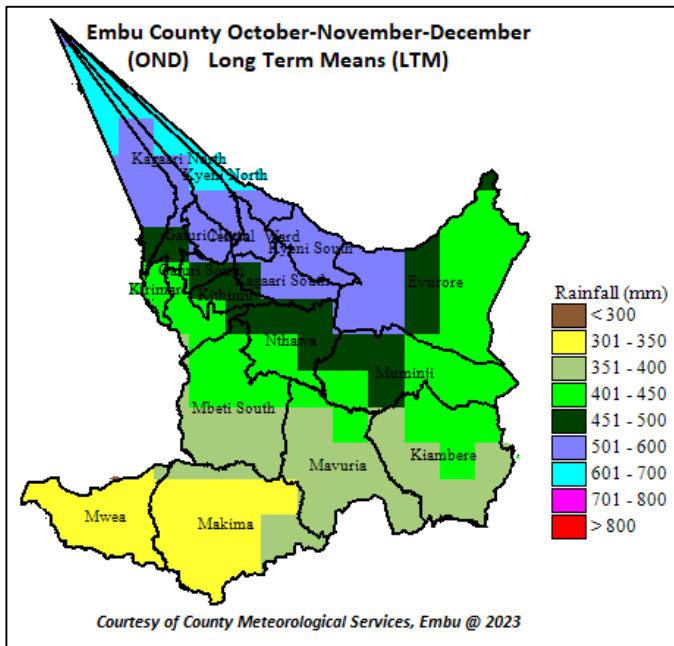


Fig. 1: Embu County OND LTM

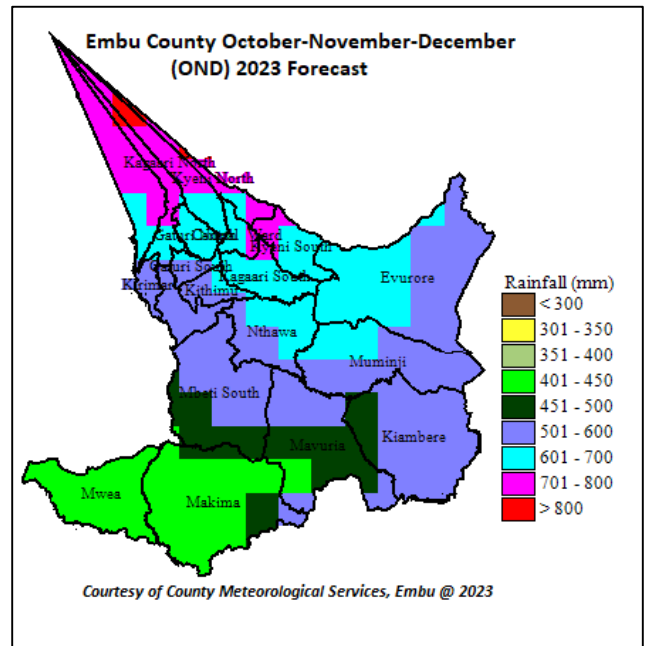


Fig. 2: Embu County OND 2023 Forecast

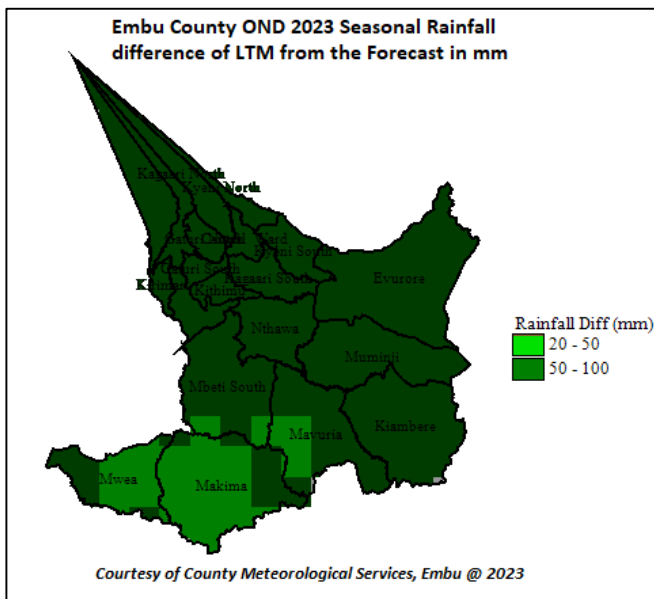


Fig. 3: Embu County Rainfall differences of LTM from OND 2023 Forecast

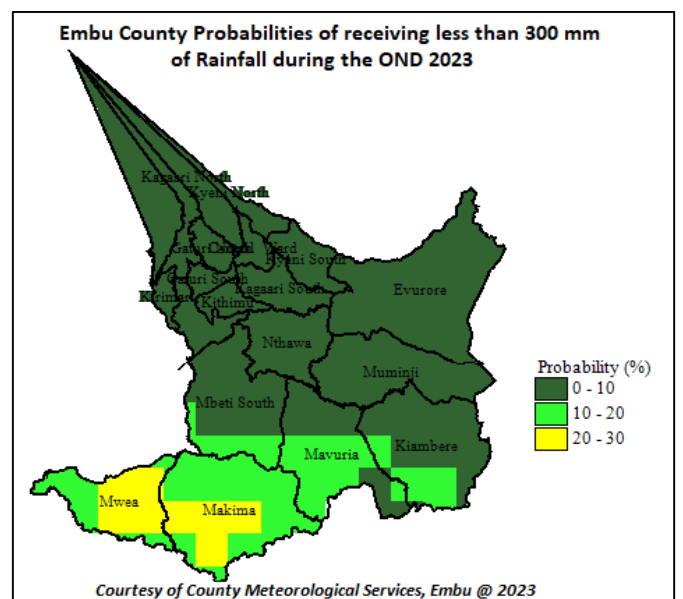


Fig. 4: Embu County Probabilities of receiving less than 300mm of rainfall during the OND 2023 period

3. EXPECTED ONSET AND CESSATION DATES

This October-November-December (OND) 2023 season is expected to be similar to the OND of 1997 and OND of 2006 whereby 1997 and 2006 are referred to as the analogue years of year 2023 (years with similar characteristics in OND as year 2023), where generally, the onset of the OND 2023 seasonal rains is expected from 1st to 2nd week of October 2023 throughout the county while cessation is expected on the 1st to 2nd week of January 2024.

4. EXPECTED DISTRIBUTION

The rainfall distribution is expected to be generally fair (onset with some dry spells then continuous rains) to good (onset that has very few if any or none significant dry spells) both in time and space throughout the county.

5. EXPECTED IMPACTS

The forecasted enhanced rainfall during the months of October to December short rains season is expected to have both negative and positive impacts across various sectors. The most likely impacts on various sectors will be highlighted by the sector leads.

NB: This forecast should be used with regular updates issued by this office. This is so because the forecast may be affected by development of Tropical Cyclones in the western Indian Ocean which this office will be updating the sectors on either weekly or as need arises.

County Director of Meteorological Services (CDMS), Embu