



Kenya Meteorological Department
County Director of Meteorological Services, Kilifi
Mob. 0746 423989; cdmkilifi@meteo.go.ke ; cdmkilifi@gmail.com

KILIFI COUNTY OCTOBER-NOVEMBER-DECEMBER (OND-2023) SEASONAL FORECAST

1. Highlights

The OND-2023 rainy season is expected to be Above-Normal with onset between 1st – 14th October 2023, and good distribution in space and time. Rains are likely to continue into January 2024. The reasons for Above-Normal rainfall and early onset are:

- (a) Higher than normal Sea Surface Temperatures in the central Pacific Ocean (El-Nino conditions) and;
- (b) Higher than normal Sea Surface Temperatures in the Western Indian Ocean (Positive Indian Ocean Dipole (IOD))

2. Spatial Map of Probable total seasonal rainfall

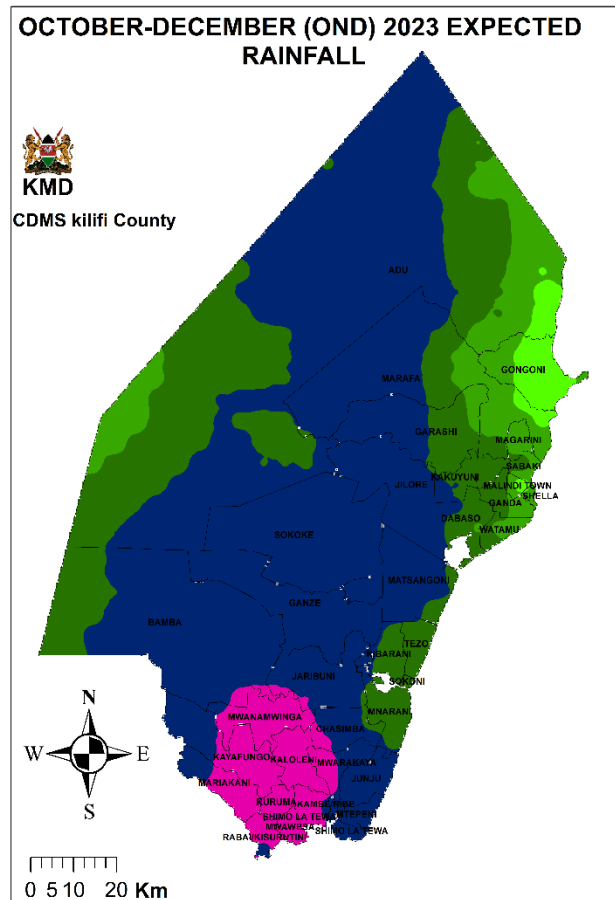
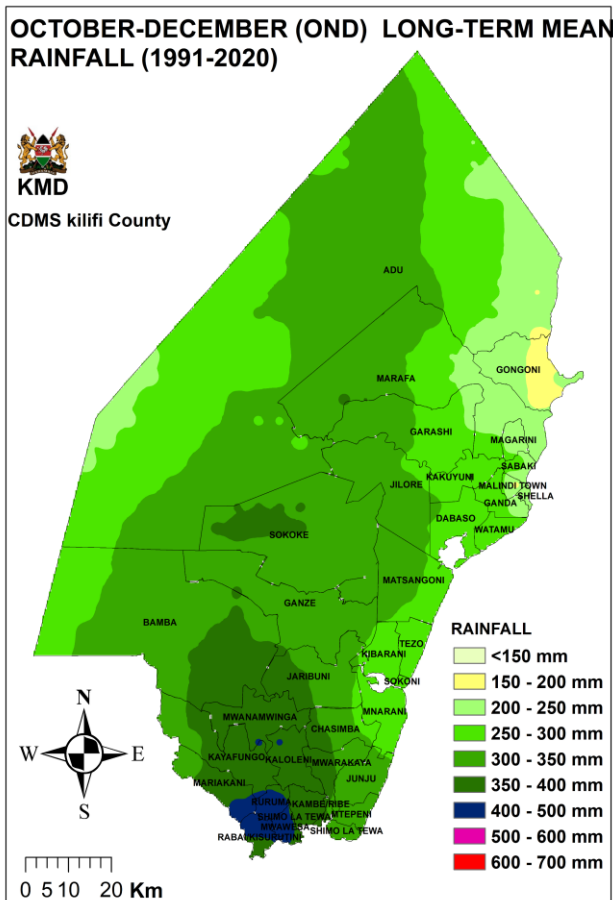


Figure 1. Compares the Long-Term Average OND rainfall for Kilifi to the OND-2023 total rainfall forecast.

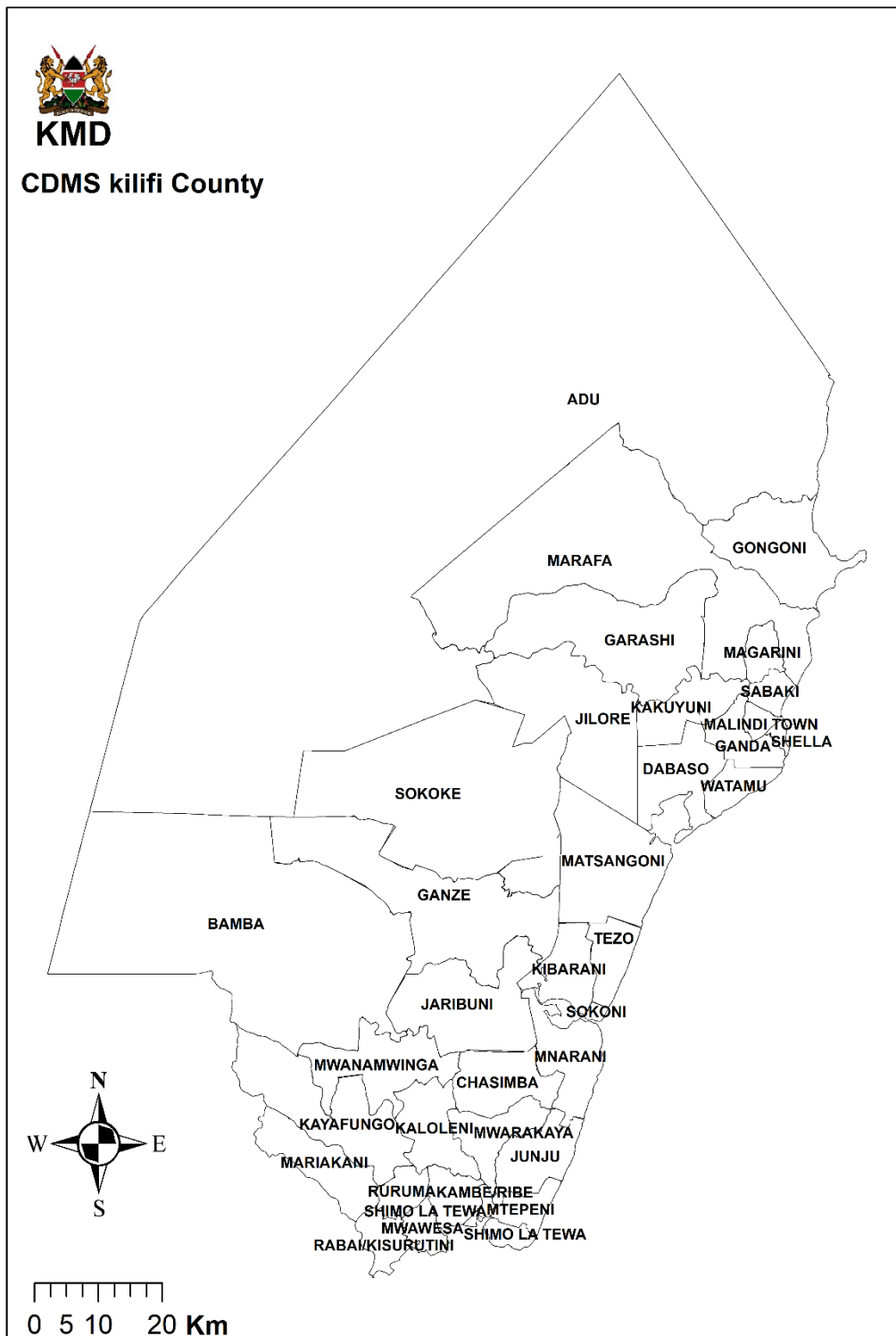
3. OND-2023 Seasonal Forecast by Ward

Sub-county	Ward	SEASONAL AMOUNT IN mm		PRABABLE ONSET DATES	PROBABLE CESSATION DATES
		NORMAL (LONG TERM MEAN 1991-2020)	FORECAST FOR OND 2023		
Magarini	Marafa (Bomani, Madina, Mambroi, Marikebuni)	200 - 350 mm	290 - 340 mm	Between 1 st - 14 th October 2023	Between 10 th - 24 th January 2023
	Marafa (Dakacha, Mwambani)	200 - 350 mm	350 - 450 mm		
	Magarini	200 - 250 mm	300 - 350 mm		
	Gongoni	200 - 250 mm	250 - 320 mm		
	Adu (Kisiki, Makongeni, Matolani, Medina)	240-320 mm	300 – 450 mm		
	Adu (Kamale, Marereni, Ramada, Kadzandini)	240-320 mm	290 – 300 mm		
	Garashi	200 - 350 mm	320 - 450 mm		
Kilifi South	Junju	300 - 350 mm	400 - 480 mm		
	Mwarakaya	300 - 380 mm	400 - 520 mm		
	Chasimba	280 - 370 mm	370 - 500 mm		
	Mtepeni	300 - 350 mm	400 - 500 mm		
	Shimo La Tewa	300 - 350 mm	400 - 500 mm		
Kilifi North	Matsangoni	280 - 320 mm	390 - 450 mm		
	Watamu	250 - 290 mm	300 - 360 mm		
	Mnarani	250 -290 mm`	350 - 400 mm		
	Tezo	250 -290 mm`	350 - 400 mm		
	Sokoni	250 - 290 mm	350 - 400 mm		
	Dabaso	270 - 300 mm	350 - 420 mm		
	Kibarani	270 - 300 mm	350 - 400 mm		
Kaloleni	Mariakani	320 - 400 mm	400 - 550 mm		
	Kayafungo	320 - 400 mm	400 - 550 mm		
	Kaloleni	350 - 400 mm	450 - 550 mm		
	Mwana mwinga	350 - 400 mm	450 - 530 mm		
Malindi	Sabaki	220 - 270 mm	300 - 360 mm		
	Jilore	280 - 300 mm	400 - 450 mm		
	Kakuyuni	250 - 300 mm	350 - 400 mm		
	Ganda	240 - 300 mm	320 - 390 mm		
	Malindi Town	200 - 280 mm	250 - 350 mm		
Ganze	Soko	300 - 360 mm	400 - 450 mm		
	Ganze	300 - 380 mm	400 - 450 mm		
	Jaribuni	290 - 360 mm	400 - 480 mm		
	Bamba	320 - 370 mm	360 - 480 mm		
Rabai	Rabai	350 - 420 mm	450 - 580 mm		
	Kambe/Ribe	350 - 400 mm	450 - 550 mm		
	Ruruma	350 - 410 mm	500 - 570 mm		
	Mwawesa	380 - 420 mm	500 - 580 mm		

4. Recommendations

1. Choosing the right crops to plant:
 - To minimize risks, chose crops whose seasonal Crop Water Requirement is within the lowers limit value of the predicted range.
2. Onset date versus planting dates:
 - For those wishing to wet plant, it is advisable to wait for the **weekly weather update** which is more accurate

5. Kilifi Wards Map



6. How to get Weather Updates

You can get weekly weather updates from “COUNTY FORECASTS” folder in the Kenya Meteorological Department (KMD) Website i.e., <https://meteo.go.ke/node/4942> every Monday evening or Tuesday morning. Sungwaya FM radio station will also air forecast updates.



Dr. Geoffrey Ogutu
County Director of Meteorological Services, Kilifi County