



1



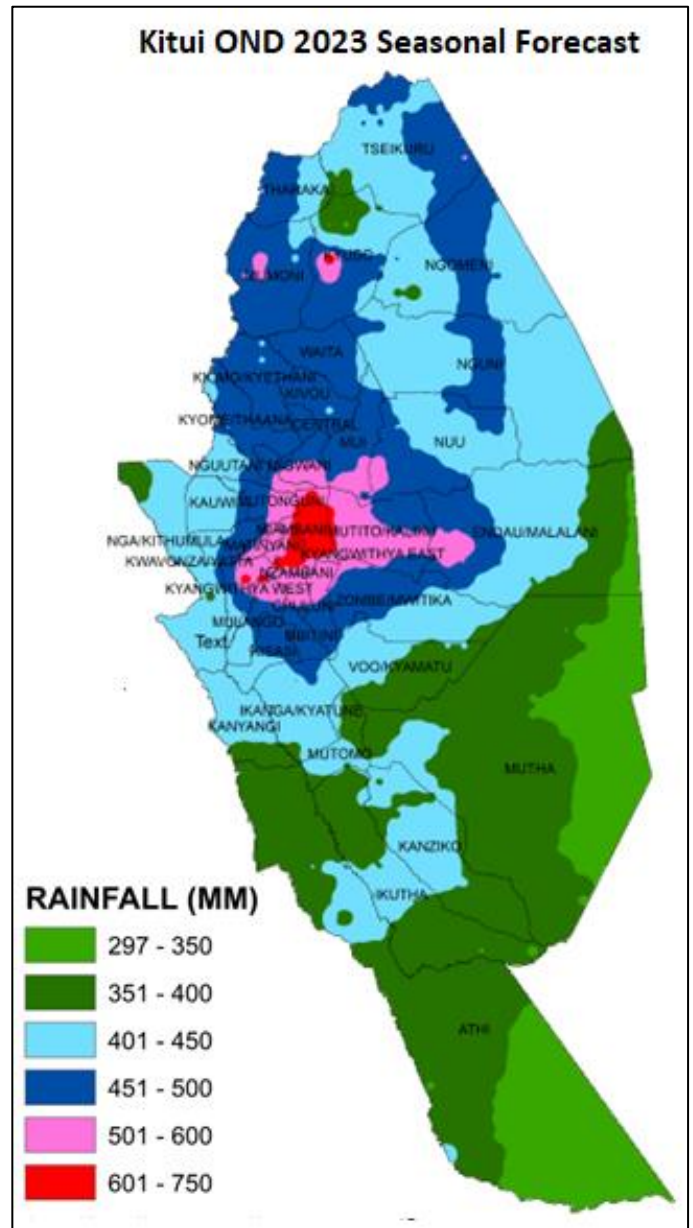
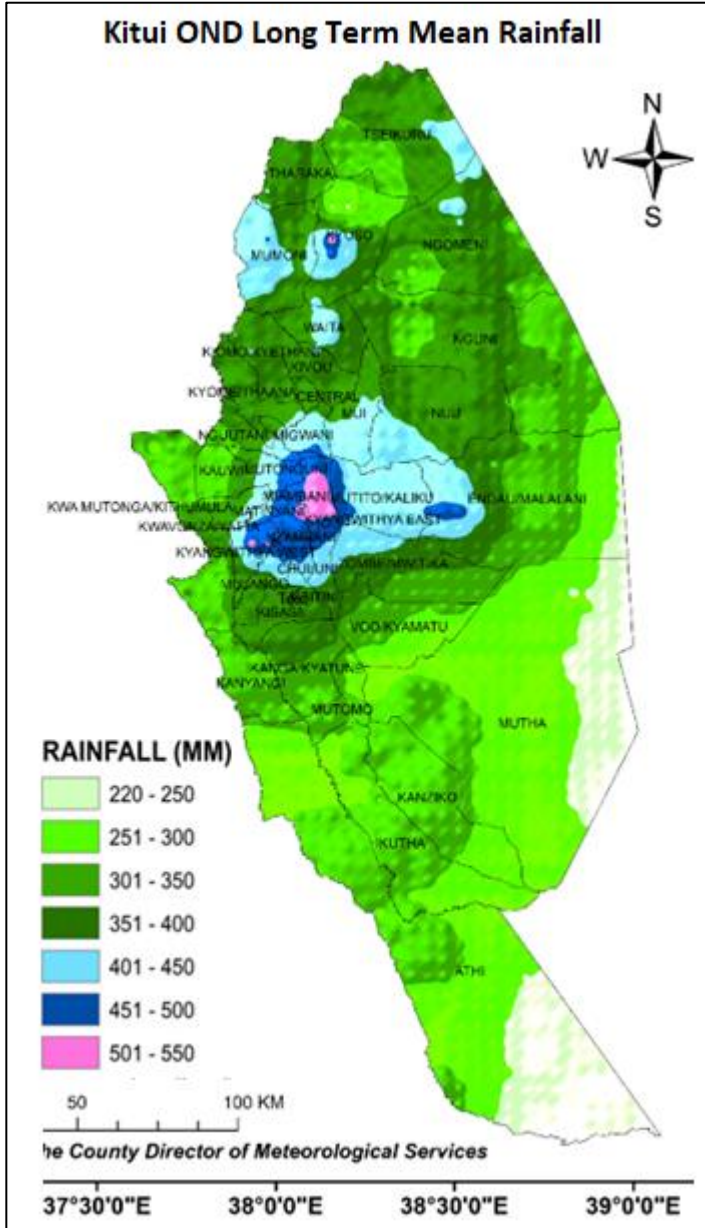
Kitui County October-November-December (OND 2023) Seasonal Forecast

1 Highlights

The OND 2023 rain season is expected to be above normal with an early onset (second to third week of October) and continue into January 2024. The season will be marked with fair to good distribution of rainfall in time and space with a small chance of short dry days within season. That is to say, the rains will start between 8th and 20th October 2023 and continue into January 2024. The reasons for above normal rainfall and early onset are: (a) higher than normal sea surface temperatures in the Central and Eastern Pacific Ocean (El-Nino conditions) and; (b) higher than normal sea surface temperatures in the Indian Ocean (Positive Indian Ocean Dipole (IOD)). The distribution of rainfall in OND 2023 season is expected to be similar to that of 2006 and 1997.



2 Spatial distribution of probable total OND Seasonal Rainfall





3 Summary of OND 2023 Seasonal Forecast by Ward

SNO	Sub county	ward/ climatic zone	Seasonal Amount in mm		Probable onset dates	Probable Cessation dates
			Normal (Long term mean 1991-2020)	Forecast for OND 2023		
1	Kitui East	Chuluni	451-500	551-600	Between 8 th - 20 th October 2023	Between 8 th - 20 th January 2024
2		Nzambani	401-450	551-600		
3		Mutito/Kaliku	401-450	551-600		
4		Nzombe/Mwitika	351-400	551-600		
5		Voo/Kyamatu	301-350	451-500		
6		Endau/Malalni	301-350	451-500		
7	Kitui South	Ikanga/kyatune	301-350	451-500		
8		Mutomo/Kibwea	301-350	401-450		
9		Kanziko/Simisi	301-350	401-450		
10		Mutha	251-300	401-450		
11		Ikutha	301-350	401-450		
12	Kitui Rural	Athi	301-350	401-450		
13		Mbitini	351-400	501-550		
14		Kisasi	351-400	501-550		
15		Kanyangi	301-350	451-500		
16	Yatta/Kwa Vonza	301-350	451-500			
17	Mwingi West	Nguutani	351-400	451-500		
18		Kyome/Thaana	351-400	501-550		
19		Kiomo/Kyethani	351-400	501-550		
20		Migwani	401-450	551-600		
21	Mwingi Central	Central	351-400	501-550		
22		Kivou	351-400	501-550		
23		Waita	351-400	501-550		
24		Mui	401-450	551-600		
25		Nuu	351-400	451-500		
26		Nguni	351-400	451-500		
27	Mwingi North	Ngomeni	351-400	451-500		
28		Kyuso	351-400	451-500		
29		Tseikuru	351-400	451-500		
30		Mumoni	401-450	551-600		
31		Tharaka	351-400	501-550		
32		Kauwi	301-350	451-500		
33		Kwa Mutonga/Ithumu la	301-350	501-550		
34		Mutonguni	451-500	601-650		
35		Matinyani	451-500	601-650		
36		Township	451-500	651-750		
37		Mulango	401-450	501-550		
38		Kyangwithya East	401-450	651-750		
39		Kyangwithya West	401-450	651-750		
40		Miambani	501-550	651-750		



5 Recommendations

- i) Choosing the right crops to plant:
 - To minimize risks, choose the crops whose seasonal Crop Water requirement within the lower limit value of the predicted range.
- ii) Onset dates versus planting dates.
 - For those wishing to wet plant, it is advisable to wait for the **weekly weather update** which is more accurate.

6 How to get Weather Updates

You can get weekly weather updates from “COUNTY FORECASTS” folder in the Kenya Meteorological Department (KMD) Website i.e., <https://meteo.go.ke/node/4942> every Monday evening or Tuesday morning. County FM radio station will also air forecast updates.

7 Kitui County Wards Map

