

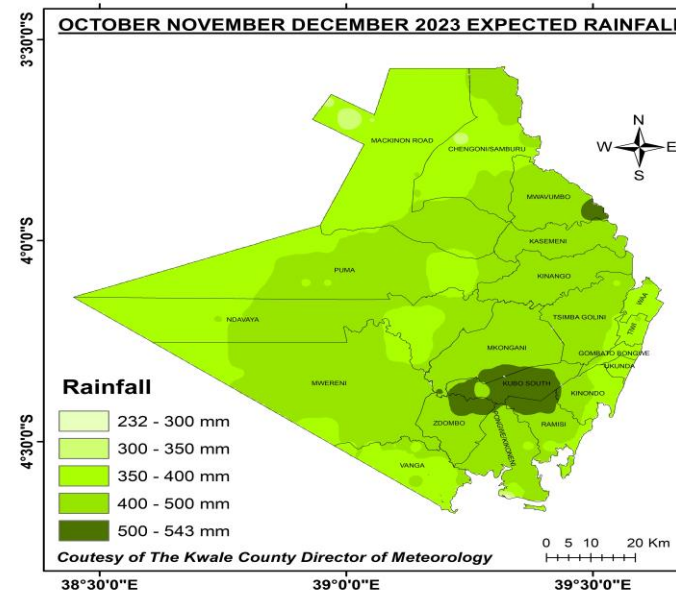
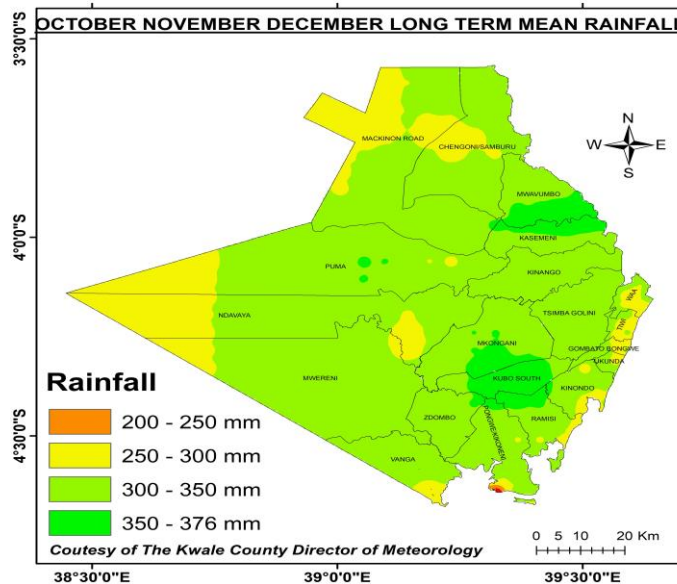


# KWALE COUNTY OCTOBER NOVEMBER DECEMBER 2023 SEASONAL CLIMATE OUTLOOK

## 1 Highlights

The October November December 2023 short rains season is a significant rainy season in Kwale County. The October November December 2023 short rains season is expected to be above normal with an early onset, likely to occur between the 24 September 2023 to 7 of October 2023. The distribution is expected to be good both in time and space. Peak rainfall is expected during the month of November 2023. The cessation will not occur within the season as the rains are expected to continue into January 2024. Occasional heavy rainfall may occur within the season. This is as a result of the prevailing warming of sea surface temperatures over the Eastern Equatorial Pacific Ocean that is favorable for El Nino conditions. The same is evident over the Western Indian Ocean with a positive Indian Ocean Dipole. Temperatures are expected to be above normal during the October November December 2023 short rains season. In the event that tropical cyclones occur within the season, you will be notified through the KMD website, Radio WhatsApp and sms.

## 2 Probable October November December total Spatial Seasonal Rainfall



### 3. Summary of Kwale County October November December 2023 Seasonal Forecast by Ward

SNO	Sub county	Ward	Seasonal Amount in mm		Probable onset dates	Probable Cessation dates	Probable Length of Rain Period	Probable distribution
			Normal (Long term mean 1991-2020)	Forecast for OND 2023				
1	Samburu/ Kwale	Mackinnon Road	200 – 350 mm	300 – 500 mm	24 September to 7 October 2023	Rains to continue to January 2024	Over 60 Days	Good both in space and time. Occasional heavy storms may occur within the season.
2		Chengoni Samburu	200 – 350 mm	300 – 500 mm				
3	Kinango	Mwavumbo	200 – 400 mm	300 – 600 mm				
4		Kasemeni	300 – 500 mm	350 – 600 mm				
5		Puma	250 – 350 mm	350 – 500 mm				
6		Ndavaya	350 – 500 mm	350 – 500 mm				
7		Kinango	350 – 500 mm	350 – 500 mm				
8	Shimba Hills	Mkongani	250 – 400 mm	350 – 500 mm	24 September to 7 October 2023	Rains to continue to January 2024	Over 60 Days	Good both in space and time. Occasional heavy storms may occur within the season.
9		Kubo South	300 – 400 mm	400 – 600 mm				
10		Tsimba Golini	250 – 350 mm	400 – 500 mm				
11	Tiwi	250 – 300 mm	350 – 500 mm					
12	Matuga	Gombato Bongwe	250 – 350 mm	400 – 500 mm				
13		Waa	250 – 350 mm	350 – 500 mm				
14	Lunga	Mwereni	250 – 350 mm	350 – 500 mm	24 September to 7 October 2023	Rains to continue to January 2024	Over 60 Days	Good both in space and time. Occasional heavy storms may occur within the season.
15		Dzombo	300 – 350 mm	400 – 500 mm				
16	Vanga	250 – 350 mm	350 – 500 mm					
17	Pongwe Kikoneni	250 – 350 mm	400 – 500 mm					
18	Msambw eni	Ramisi	250 – 350 mm	400 – 600 mm	24 September to 7 October 2023	Rains to continue to January 2024	Over 60 Days	Good both in space and time. Occasional heavy storms may occur within the season.
19		Kinondo	250 – 350 mm	350 – 500 mm				
20		Ukunda	250 – 300 mm	400 – 500 mm				

### 3 Advisories

#### Crops Sector

Farmers are advised to:-

1. Early land preparation taking into account conservation Agriculture for planting during the oncoming short rains season.
2. On farm soil and water conservation to be practiced by farmers. Tree planting is also encouraged amongst all farmers.
3. Where appropriate conduct soil testing to determine the correct types of fertilizers to be used on the farms.
4. Agro Dealers to stock relevant certified seeds, pesticides, herbicides and fertilizers.
5. Procure certified seeds for every Agro ecological zone from accredited Agro Dealers before the rainfall onset.
6. Timely planting, weeding, thinning, pruning and application of appropriate fertilizers.
7. Planting of cover crops and use of mulching to conserve soil moisture, control weeds and check soil erosion on farms is recommended.
8. Regular scouting for harmful pests and diseases on the farms.
9. Consult with the area Ward Agricultural Officers on the management of weeds, pests and diseases at farm level.
10. Timely construction of storage facilities before the crops matures. Timely Repair of stores and granaries where possible.
11. Harvest the mature crop at the right time, dry it to the recommended moisture level, and store in hermetic bags. Store accordingly in the granaries on wooden pallets away from the walls
12. Store adequate food for the family and sell off the surplus when the prices are high. 50 kg bags are most suitable for keeping farm produce. They make it possible for farm produce to be easily transported from the farm to the home and from the home to the market.
13. Opening up of aggregation centers where farmers could take their farm produce as they wait for the on-farm prices to increase.
14. Diversification of livelihood using the income from sell of surplus farm produce. Start sheep, goat and poultry keeping as alternative livelihood.

Livestock Sector: -

Farmers are advised to:

1. Practice timely pasture management, harvesting and conservation (repair of the hay barn, buy silage bags, timely harvesting).
2. Practice timely preservation of pasture or fodder (hay and silage) or harvesting and preservation (Star grass, Ciliaris), fodder/ fodder trees management (Lucina, Moringa) during the forecast period.
3. Stock adequate drugs, vaccines for timely vaccinations and deworming
4. Practice timely pasture conservation as standing hay, preserved hay and silage by peak rains
5. Seek veterinary services and vaccinate livestock before the season onset
6. Water harvesting using traditional techniques (roof harvesting catchment, pond, etc.)

7. Desilt the water pans for livestock use
8. Planting of drought-resistant crop for animal feed in the drier parts of the county– Sorghum/ millets-suitable for marginal lands
9. Practice and promote alternative livelihoods (Beekeeping and poultry keeping)

### **Water sector**

Farmers are urged to:

1. Practice simple techniques (roof catchment, plastic tanks, Zai-pits, farm ponds, terraces, and small pans) of water harvesting and storage for domestic, farming and livestock use
2. Practice treatment of drinking water by boiling and the use of aqua tabs/water guard
3. Practice agroforestry by planting trees around the homestead and in water catchment areas
4. Advise the community to be prepared to evacuate low-lying areas and move to high ground or safer areas due to likelihood of flood, landslide or mudslide events
5. Organise themselves (nguvu kazi) to clear and desilt the canals, and request the County government to provide an excavator
6. Advise children not to swim in stagnant water (around homesteads) or spray paraffin for controlling mosquito breeding
7. Avoid constructing houses in water paths or terraces that cut off drains and create stagnant dams, and water logging.

## **4 How to get Weather Updates**

You can get weekly weather updates from the Counties folder in the KMD Website <https://meteo.go.ke/node/4191> and via SMS messages every Monday evening or early Tuesday morning.

---

**For More information Contact, the Nearest Agric Office: Ward, Sub County & County- Kwale  
Kwale Meteorological Office mobile 0723 465 915**

