



TAITA TAVETA COUNTY OCTOBER NOVEMBER DECEMBER (OND 2023) SEASONAL CLIMATE OUTLOOK

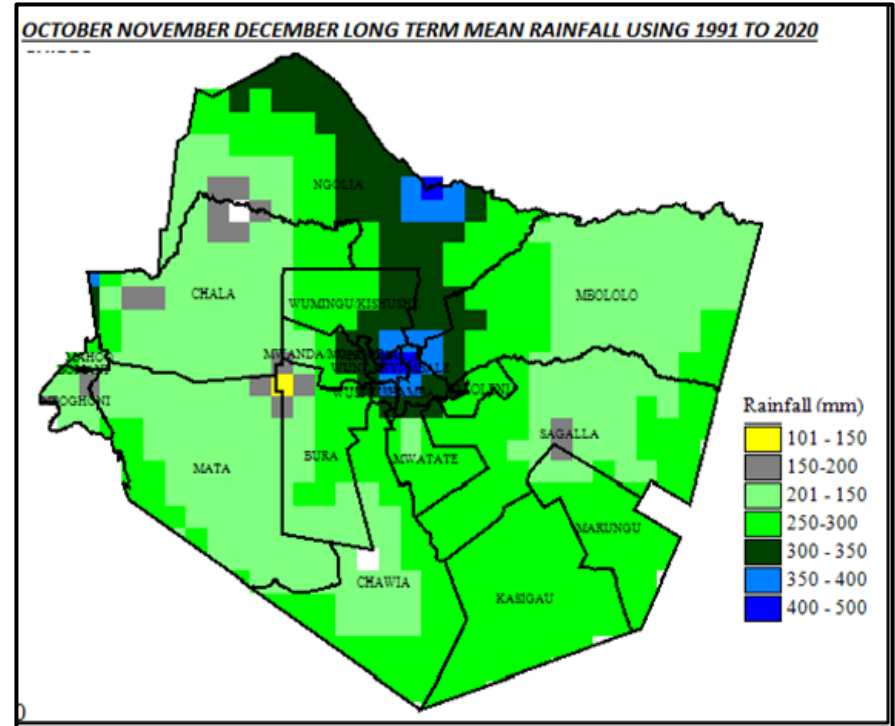
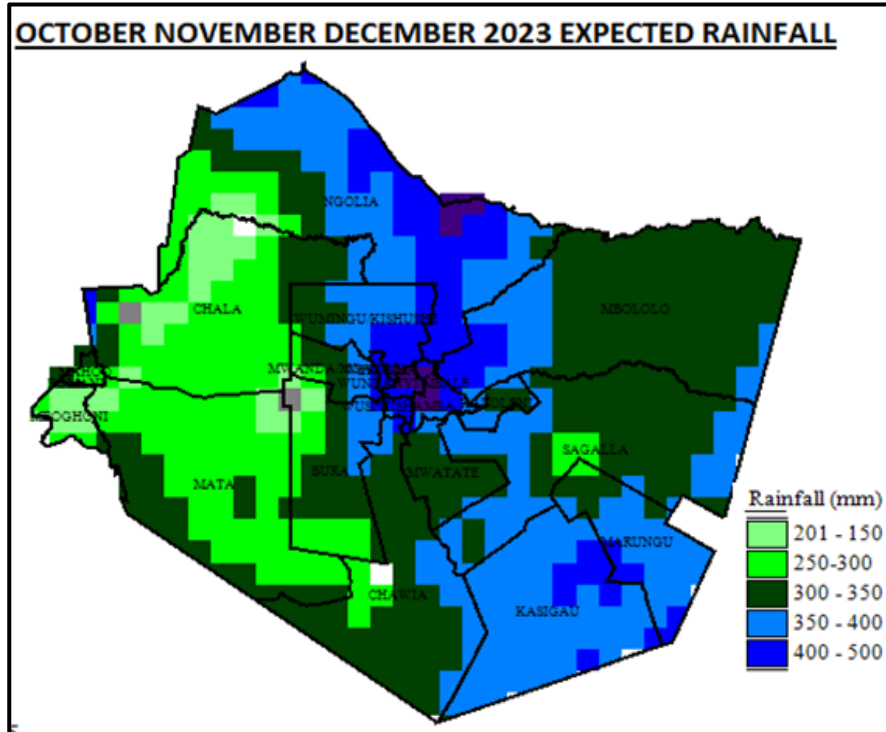
Contents

1	Highlights.....	1
3.	Summary of Taita Taveta OND2023 Seasonal Forecast by Ward.....	3
4	Advisories	4
4.1	Crops Sector	4
4.2	Livestock Sector: -	4
4.3	Water sector	5
5	How to get Weather Updates	5
6	TAITA TAVETA COUNTY BY WARDS	6

1 Highlights

The October November December (OND) 2023 short rains season is a significant rainy season in Taita Taveta County. Voi, Mwatate and Taita Sub Counties highly depend on the short rains season. Taveta Sub County depends more on the on March-May rainy season. The October November December 2023 short rains season is expected to be above normal with an early onset, likely to occur between the **8 to 21 of October 2023**. The distribution is expected to be good both in time and space. Peak rainfall is expected during the month of November 2023. The cessation may not occur within the season, as the rains are expected to **continue into January 2024**. This is as a result of the prevailing warmer than normal sea surface temperatures over the Eastern Equatorial Pacific Ocean that is favorable for El Nino conditions. Similar warmer than normal warming is evident over the western Indian Ocean (termed positive Indian Ocean Dipole). Temperatures are expected to be above normal during the October November December 2023 short rains season.

2 Spatial Distribution of Total OND Seasonal Rainfall



3. Summary of Taita Taveta OND2023 Seasonal Forecast by Ward

SNO	Sub county	Ward	Seasonal Amount in mm		Probable onset dates	Probable Cessation dates	Probable Length of Rain Period	Probable distribution
			Normal (Long term mean 1991-2020)	Forecast for OND 2023				
1	Voi	Kaloleni	200 – 300 mm	350 – 400 mm	8 to 21 October 2023	Rains to continue to January 2024	Over 60 Days	Fair to good both in space and time. Occasional dry spells may occur within the season.
2		Kasigau	200 – 300 mm	350 – 500 mm				
3		Marungu	150 – 300 mm	200 – 400 mm				
4		Mbololo	150 – 400 mm	300 – 400 mm				
5		Ngolia	142 – 400 mm	200 – 500 mm				
6		Sagala	150 – 300 mm	250 – 400 mm				
7	Mwatate	Bura	150 – 300 mm	200 – 400 mm	8 to 21 October 2023	Rains to continue to January 2024	Over 60 Days	Fair to good both in space and time. Occasional dry spells may occur within the season.
8		Chawia	200 – 300 mm	200 – 400 mm				
9		Mwatate	200 – 250 mm	300 – 400 mm				
10		Rong'e	250 – 500 mm	350 – 500 mm				
11		Wusi Kishamba	250 – 400 mm	350 – 500 mm				
12	Taita	Wundanyi/Mbale	300 – 500 mm	350 – 500 mm	24 to 30 September 2023	Rains to continue to January 2024	Over 60 Days	Fair to good both in space and time. Occasional dry spells may occur within the season.
13		Wumingu/Kishushe	200 – 500 mm	250 – 500 mm				
14		Werugha	400 – 500 mm	400 – 500 mm				
15		Mwanda/Mgange	150 – 500 mm	200 – 400 mm				
16	Taveta	Bomani	100 – 150 mm	300 – 350 mm	8 to 21 October 2023.	Rains to continue to January 2024	Over 60 Days	Fair to good both in space and time. Occasional dry spells may occur within the season.
17		Chala	100 – 300 mm	200 – 400 mm				
18		Mahoo	150 – 200 mm	200 – 350 mm				
19		Mata	100 – 200 mm	200 – 350 mm				
20		Mboghoi	100 – 250 mm	200 – 300 mm				

4 Advisories

4.1 Crops Sector

Farmers are advised to:-

1. Early land preparation taking into account conservation Agriculture for planting during the oncoming short rains season.
2. On farm soil and water conservation to be practiced by farmers.
3. Where appropriate conduct soil testing to determine the correct types of fertilizers to be used on the farms.
4. Agro Dealers to stock relevant certified seeds, pesticides, herbicides and fertilizers.
5. Procure certified seeds for every Agro ecological zone from accredited Agro Dealers before the rainfall onset.
6. Timely planting, weeding, thinning, pruning and application of appropriate fertilizers.
7. Planting of cover crops and use of mulching to conserve soil moisture, control weeds and check soil erosion on farms is recommended.
8. Regular scouting for harmful pests and diseases on the farms.
9. Consult with the area Ward Agricultural Officers on the management of weeds, pests and diseases at farm level.
10. Timely construction of storage facilities before the crops matures. Timely Repair of stores and granaries where possible.
11. Harvest the mature crop at the right time, dry it to the recommended moisture level, and store in hermetic bags. Store accordingly in the granaries on wooden pallets away from the walls
12. Store adequate food for the family and sell off the surplus when the prices are high. 50 kg bags are most suitable for keeping farm produce. They make it possible for farm produce to be easily transported from the farm to the home and from the home to the market.
13. Opening up of aggregation centers where farmers could take their farm produce as they wait for the on-farm prices to increase.
14. Diversification of livelihood using the income from sell of surplus farm produce. Start sheep, goat and poultry keeping as alternative livelihood.

4.2 Livestock Sector: -

Farmers are advised to:

1. Practice timely pasture management, harvesting and conservation (repair of the hay barn, buy silage bags, timely harvesting).
2. Practice timely preservation of pasture or fodder (hay and silage) or harvesting and preservation (Star grass, Ciliaris), fodder/ fodder trees management (Lucina, Moringa) during the forecast period.
3. Stock adequate drugs, vaccines for timely vaccinations and deworming
4. Practice timely pasture conservation as standing hay, preserved hay and silage by peak rains
5. Seek veterinary services and vaccinate livestock before the season onset
6. Water harvesting using traditional techniques (roof harvesting catchment, pond, etc.)
7. Desilt the water pans for livestock use
8. Planting of drought-resistant crop for animal feed – Sorghum/ millets-suitable for marginal lands
9. Practice and promote alternative livelihoods (Beekeeping and poultry keeping)

4.3 Water sector

Farmers are urged to:

1. Practice simple techniques (roof catchment, plastic tanks, Zai-pits, farm ponds, terraces, and small pans) of water harvesting and storage for domestic, farming and livestock use
2. Practice treatment of drinking water by boiling and the use of aqua tabs/water guard
3. Practice agroforestry by planting trees around the homestead and in water catchment areas
4. Advise the community to be prepared to evacuate low-lying areas and move to high ground or safer areas due to likelihood of flood, landslide or mudslide events
5. Organise themselves (nguvu kazi) to clear and desilt the canals, and request the County government to provide an excavator
6. Advise children not to swim in stagnant water (around homesteads) or spray paraffin for controlling mosquito breeding
7. Avoid constructing houses in water paths or terraces that cut off drains and create stagnant dams, and water logging.

5 How to get Weather Updates

You can get weekly weather updates from the Counties folder in the KMD Website <https://meteo.go.ke/node/4942> and via SMS messages every Monday evening or early Tuesday morning.

In case tropical cyclones occur to West of the Indian Ocean, you will be notified through KMD website, Radio, WhatsApp, email, telegram and other social media platform

**For More information Contact, the Nearest Agric Office: Ward, Sub County & County- Taita Taveta
Taita Taveta Meteorological Office mobile 0723 465 915**

6 TAITA TAVETA COUNTY BY WARDS

