



Kenya Meteorological Department
P.O. Box 205-90200
Kitui County

Mobile: 0715255171
Email: mbithid@meteo.go.ke

ADVISORIES FOR THE OCTOBER-NOVEMBER-DECEMBER 2023 (OND 2023) SHORT-RAIN SEASON

Contents

1	Weather Forecast	2
1.1	Highlights	2
1.2	Spatial distribution of probable total OND Seasonal Rainfall.....	2
1.3	Summary of OND 2023 Seasonal Forecast by Ward	3
1.4	Recommendations	4
2	Agro-Weather Advisories	4
2.1	General Responsibilities	4
2.2	General Farm Activities.....	4
2.3	When to Plant	4
2.4	Specific Agro-weather Advisories for the Upper zones: 500-750mm.....	5
2.5	Specific Agro-weather Advisories for the Middle zones: 400-500 mm	5
2.6	Specific Agro-weather Advisories for the Lower zones: 297-400 mm	6
2.7	General Analysis of Hazards/Risks and Opportunities (agriculture).....	6
3	Specific advisories for Livestock farmers.....	7
4	Advisories for Other Livelihood Sectors	8
5	How to get Weather Updates	9
6	Annex 1: Kitui County Wards Map.....	10

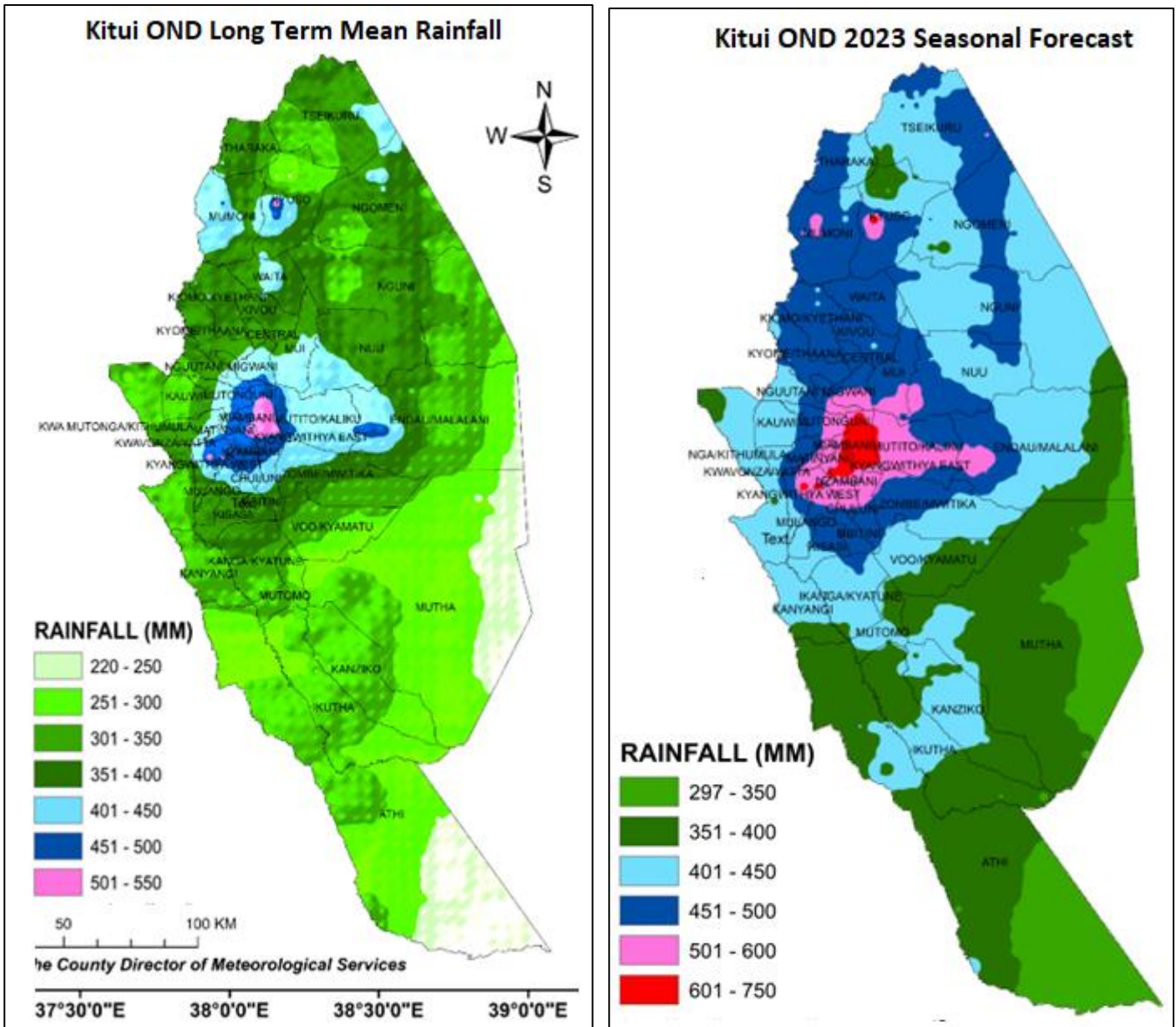
1 Weather Forecast

1.1 Highlights

The OND 2023 rain season is expected to be above normal (enhanced rainfall). The onset is predicted to be between 15th and 31st October with a high chance of rains likely to continue into January 2024. The distribution is expected to be good distribution in time and space. Thus, the length of the rain period will be 60-75 days.

The map below shows the spatial distribution of the amount of rainfall expected in the entire OND 2023 season (as compared to a normal OND season).

1.2 Spatial distribution of probable total OND Seasonal Rainfall



1.3 Summary of OND 2023 Seasonal Forecast by Ward

SNO	Sub county	ward/ climatic zone	Seasonal Amount in mm		Probable onset dates	Probable Cessation dates
			Normal (Long term mean 1991-2020)	Forecast for OND 2023		
1	Kitui East	Chuluni	451-500	551-600	Between 15 th – 31 st October 2023	Between 8 th - 20 th January 2024
2		Nzambani	401-450	551-600		
3		Mutito/Kaliku	401-450	551-600		
4		Nzombe/Mwitika	351-400	551-600		
5		Voo/Kyamatu	301-350	451-500		
6		Endau/Malalni	301-350	451-500		
7	Kitui South	Ikanga/kyatune	301-350	451-500		
8		Mutomom/Kibwea	301-350	401-450		
9		Kanziko/Simisi	301-350	401-450		
10		Mutha	251-300	401-450		
11		Ikutha	301-350	401-450		
12		Athi	301-350	401-450		
13	Kitui Rural	Mbitini	351-400	501-550		
14		Kisasi	351-400	501-550		
15		Kanyangi	301-350	451-500		
16		Yatta/Kwa Vonza	301-350	451-500		
17	Mwingi West	Nguutani	351-400	451-500		
18		Kyome/Thaana	351-400	501-550		
19		Kiomo/Kyethani	351-400	501-550		
20		Migwani	401-450	551-600		
21	Mwingi Central	Central	351-400	501-550		
22		Kivou	351-400	501-550		
23		Waiata	351-400	501-550		
24		Mui	401-450	551-600		
25		Nuu	351-400	451-500		
26		Nguni	351-400	451-500		
27	Mwingi North	Ngomeni	351-400	451-500		
28		Kyuso	351-400	451-500		
29		Tseikuru	351-400	451-500		
30		Mumoni	401-450	551-600		
31		Tharaka	351-400	501-550		
32		Kauwi	301-350	451-500		
33		Kwa Mutonga/Ithumu la	301-350	501-550		
34		Mutonguni	451-500	601-650		
35		Matinyani	451-500	601-650		
36		Township	451-500	651-750	Between 15 th – 31 st October 2023	Between 8 th - 20 th January 2024
37		Mulango	401-450	501-550		
38		Kyangwithya East	401-450	651-750		
39		Kyangwithya West	401-450	651-750		
40		Miambani	501-550	651-750		

1.4 Recommendations

- i) Choosing the right crops to plant:
 - To minimize risks, choose the crops whose seasonal Crop Water requirement within the lower limit value of the predicted range.
- ii) Onset dates versus planting dates.
 - For those wishing to wet plant, it is advisable to wait for the **weekly weather update** which is more accurate.

2 Agro-Weather Advisories

2.1 General Responsibilities

- Farmers to implement the advisories
- Agricultural Officers to advise farmers
- Input suppliers to ensure inputs are available on time
- Community Extension Volunteers to advise farmers
- Kenya Meteorological Department (KMD) to provide weather updates (daily, 5-day, weekly, monthly, other)
- Agriculture, Livestock and Fisheries development to liaise with KMD
- Insurance companies

2.2 General Farm Activities

- Early land preparation: before 15th October
- Repair of soil and water conservation structures: Terraces, Zai Pits, basins, water ponds
- Repair of water storage structures: Desilting of farm ponds, weirs, water tanks, water pans, gutters
- Practices: Conservation Agriculture (CA): Ripping, planting stations
- Pre-germination (seed soaking); Seed preparation
- Scale up manure and fertilizer application (basal & top dressing)
- Timely weed control
- Timely and proper pests and disease control
- Proper spacing of crops
- Plant ecologically suitable certified seeds as indicated above
- Pitting for fruits and forest Trees

2.3 When to Plant

- Wet Plant when the **weekly forecast** indicates enough rainfall. This should be around the predicted onset dates in this forecast.

2.4 Specific Agro-weather Advisories for the Upper zones: 500-750mm

Crops to plant	Wards: Central Kyuso, Mumoni, Mutonguni, Matinyani, Miambani, Kyuluni, Nzambani, Mulango, Kyangwithya East, Kyangwithya West, Kitui Township Probable OND 2023 amount: 500-750 mm
1. Maize	Pioneer 2859, Panna 3M-01, Duma 43 & Duma 419, DK 8031, Sawa; Spacing 90x30cm
2. Beans	KATX56, KB1 (Ka Yellow), Nyota, Kat B9, GLP92 (Mwitmania), GLP 1000 (Mwezi moja), Kakunzu; Spacing 45x15cm
3. Cow Peas	M66, K80, KVU-27-1 & KENKUNDE, Local variety (Kalitho & Ndamba); Spacing 60x20cm
4. Pigeon peas	Mbaazi 1, Mbaazi 2, Local varieties; Spacing 90x50cm
5. Dolichos	DL1002, DL100; Spacing 100cm x 50cm
6. Cassava	KME 1, Mucericeri, KME 61, Red Stemmed Varieties, Orange fleshed (biofortified), Bungoma F1, Kensport, Local varieties
7. Sweet Potatoes	Local varieties
8. Sorghum	Gadam, KARI Mtama 1, Local varieties; Spacing 60x20cm to 75x20cm
9. Millets	Finger millet, KPM 1 & 2, Biofortied millet; Spacing 60x20cm
10. Green Grams	KS20 (Makueni), N26 (Nylon), Karemba, Biashara, Ndegu Tosha, Local varieties; Spacing 45x15cm

2.5 Specific Agro-weather Advisories for the Middle zones: 400-500 mm

Crops to plant	Wards: Mulango, Kanziko/Simisi, Ikanga/Kyatune, Yatta/Kwa Vonza, Kanyangi, Kisasi, Mbitini, Zombe/Mwitika, Mutito/Kaliku, Endau/Malalani, Nuu, Nguni, Mui, Waita, Ngomeni, Kyuso, Tseikuru, Tharaka, Central, Kivou, Kiomo/Kyethani, Kyome/Thaana, Nguutani, Migwani, Kwa Mutonga/Kithumula Probable MAM 2023 amount: 400-500 mm
1. Maize	Pioneer 2859, Panna 3M-01, Duma 43, Duma 419, DK 8031, Sawa, Sungura, Haraka; Spacing 90x30cm
2. Beans	KATX56, KB1 (Ka Yellow), Nyota, Kat B9, GLP92 (Mwitmania), GLP 1000 (Mwezi moja), Kakunzu; Spacing 45x15cm
3. Cow Peas	K80, M66, KVU-27-1, KENKUNDE, Local varieties (Ndamba & Kalitho); Spacing 60x20cm
4. Pigeon peas	Mbaazi 1, Mbaazi 2, KAT 60/8 KAT 60/8; Spacing 60x20cm
5. Dolichos	DL1002; Spacing 100cm x 50cm
6. Cassava	Maintain the existing crop KME 1, Mucericeri, KME 61, Red Stemmed Varieties, Locals
7. Green grams	KS20 (Makueni), N26 (Nylon), Biashara, Karemba, Ndengu Tosha; Spacing 45x15cm
8. Sorghum	Gadam, KARI Mtama 1, Seredo, Advanta; Spacing 60x20cm to 75x20cm
9. Millets	Pearl millet1, Pearl millet 2, Biofortified millet; Spacing 60x20cm
10. Sweet potatoes	Local varieties

2.6 Specific Agro-weather Advisories for the Lower zones: 297-400 mm

Crops to plant	Wards: Athi, Ikutha, Mutha, Mutomo/Kibwea, Voo/Kyamatu, Kanziko/Simisi
	Probable MAM 2023 amount: 297-400 mm
1. Maize	KDVI, Haraka, Panna 3M01, Sungura; Spacing 90x30cm
2. Beans	KBI (Ka Yellow), GLP92 (Mwitmania), GLP 1000 (Mwezi moja), Kakunzu; Spacing 45x15cm
3. Cow Peas	M66, K80, KVU-27-1, Ken Kunde, KK1, Locals varieties (Kalitho and Ndamba); Spacing 60x20cm
4. Pigeon peas	KAT 60/8, Mbaazi 1, Mbaazi 2, Katx 50/8, Mpesa, Katumila; Spacing 90x50cm
5. Dolichos	DL1002; Spacing 100cm x 50cm
6. Green grams	KS20 (Makueni), N26 (Nylon), Biashara, Karemba, Ndengu Tosha; Spacing 45x15cm
7. Sorghum	Gadam, Sila, Kari Mtama1, Seredo, Serena; Spacing 60x20cm to 75x20cm
8. Millets	Finger millet, KPM 1 & 2, Biofortified millet; Spacing 60x20cm

2.7 General Analysis of Hazards/Risks and Opportunities (agriculture)

Hazards /risks	Opportunities	Proposed actions
<ul style="list-style-type: none"> • Heavy floods (flash floods) • Soil erosion • Isolated incidences of water logging • Outbreak of crop pests and diseases • Leaching of nutrients • Destruction of farm structures 	<ul style="list-style-type: none"> • Maximizing yields and income through planting recommended varieties • Increased area under crop and farm forest cover • Water harvesting for crop production and household use • Availing of certified farm inputs by agro-dealers • Kitchen gardening • Insuring of crops 	<ul style="list-style-type: none"> • Establish new and Repair existing soil and water conservation structures and farm facility structures • Staggered planting • Timely procurement of inputs • Embrace Integrated Pest Management and Integrated Crop Management • Procurement of crop insurance

3 Specific advisories for Livestock farmers

Recommended Actions	Hazard/Risks	Opportunities	Responsible
<p>Pastures/fodder to be established</p> <ul style="list-style-type: none"> • Panicum maximum (Mbwea) • African foxtail / Buffel grass Cenchrus ciliaris (Ndata Kivumbu) • Horsetail Chloris roxburghiana (Kilili) • Bracharia species • Pennisetum species • Cencrus ciliaris • Sorghum Fodder • Sudan grass • Maasai love Eragrostis superba (Mbeetwa) 	<ul style="list-style-type: none"> • Livestock diseases, Parasites infestation, Poor pasture and fodder establishment • Inadequate pasture and fodder • Reduced milk production • Low birth rates • Poor body condition • Low prices of animals • Reduced water availability • Reduced household income 	<ul style="list-style-type: none"> • Feed Conservation • Breed improvement-for adaptable breeds • Value addition • Water harvesting and storage • Increase of small stock number • Breed improvement-for adaptable breeds • Value addition • Water harvesting and storage • Increase of small stock number • Feed Conservation 	<p>Farmers WLPO Community Extension Volunteers,</p> <p>Inputs suppliers</p> <p>Service providers</p>
<p>✓ General actions</p> <ul style="list-style-type: none"> • Ration feeding/Paddock/conservative feeding. • Restocking with young cows and culling old stock. • Conserving pasture and fodder. • Adopt Home feed formulations. • Breed management. • Rehabilitation of Existing and establishment of new water harvesting structures. • Bush management for pasture improvement. • Deworming. • Tick control. • Vaccinate the animals against weather related diseases. • Proper housing for livestock protection. • Timely harvesting and preservation of pastures and fodder. • Rehabilitation of fish ponds. • Restocking of fish ponds. 			

4 Advisories for Other Livelihood Sectors

SECTOR	Impact	Hazards/ Risk	Opportunity	Intervention/ Actions	Responsible
Water resources	Little water that should be harvested	Inadequate water infrastructures -Flash flood	Water harvesting & conservation	Water trucking, adopt Water harvesting structures e.g. dams, ponds, water tanks	Dept of water and development partners
Disaster management	Few disasters likely to happen	Likelihood of La nina phenomenon to persist	Leverage on salvaged produce	Emergency /contingency plans	National Drought Management Authority, NGOs, Governments, Faith Based Organization
Wildlife /forestry	Increased Human /wildlife conflict, Incidences of wildfire breakout.	Loss of livelihood Loss of wildlife	Conservation and strict protection of the current biodiversity	Human /wildlife conflict minimization through budgetary allocation for compensation, electric fencing, surveillance and enforcement, Afforestation programs	KWS National & County Government Farmers
Trade, industry and finance	commodity price increase Reduced per Capita incomes	Famine/ drought/starvation	Prudent utilization of current food reserves, Importation of essential food commodities	Subsidized trader Reduced credit interests	Dept of Trade, Business Community, National & County Government
Energy	Energy infrastructure network collapse	Electrocution, Temporary blackouts	Maintenance of KPLC infrastructures, Investment on alternative energy sources	Allocate emergency funds, subsidy on fuel especially for domestic use	Kenya Power
	Power outages	Short-circuiting	Energy saving	Alternative supply e.g. solar, generators	Kenya Power
	Increased cost of Energy	Reduced electric energy generation	Intensified use of solarenergy	Power rationing, Subsidies on solar power equipment	

SECTOR	Impact	Hazards/ Risk	Opportunity	Intervention/ Actions	Responsible
Transport /communication	Poor transport & communication networks	Flash floods	Road for water harvesting	Diversion channels Emergency funds /personnel, declogging of culverts	Dept of Transport, NTSA, National Government, County Government
Health	Increased Food insecurity	Increased Malnutrition, Increased food deficient related ailments	Leverage on Nutrition, Increase food supplements for young children and the elderly	Emergency /mobile clinic, Increase Health personnel, enhanced public health activities, Prepositioning of drugs in health facilities	Ministry of Health, Private Hospitals, Stakeholders
Education	Disruptions of education due to hunger at home, Increased school drop outs	Poor school infrastructure due to parent's low incomes	Initiation of School feeding Program	Early warning and preparedness	Dept of Education, NGOs, Faith Based Organizations, Parents

5 How to get Weather Updates

You can get weekly weather updates from “COUNTY FORECASTS” folder in the Kenya Meteorological Department (KMD) Website i.e., <https://meteo.go.ke/node/4942> every Monday evening or Tuesday morning.

For More information Contact, the Nearest Agricultural Office: Ward, Sub County & County-Kitui

Kitui Meteorological Office mobile: 0715255171

6 Annex 1: Kitui County Wards Map

