



**For further info:**  
**Contact Dr. Geoffrey Ogutu**  
**Mobile No. 0746423989**  
**Email: [cdmkilifi@meteo.go.ke](mailto:cdmkilifi@meteo.go.ke); [cdmkilifi@gmail.com](mailto:cdmkilifi@gmail.com)**  
**County Director of Meteorological Services Kilifi County**

## Weekly Weather Forecast for Kilifi County for 21<sup>st</sup> – 27<sup>th</sup> November 2023

### 1. PART I: Detailed Weather forecasts by Ward

Sub County	Ward	Total weekly amount mm	Probable weather							Winds in m/s (meters per second)	Temperature (max & Min in °C)
			Notes: Light rains < 1-5 mm; Moderate rains 5-20 mm; Heavy rains > 20 mm								
			Tue	Wed	Thur	Fri	Sat	Sun	Mon	Weekly	Weekly
Magarini	Marafa	40 – 70 mm	Light showers	Moderate showers	Moderate showers	Moderate showers	Light showers	Moderate showers	Light showers	7 m/s	30 – 31 °C 23 – 24 °C
	Magarini	40 – 70 mm	Light showers	Moderate showers	Moderate showers	Moderate showers	Moderate showers	Moderate showers	Light showers	8 m/s	29 – 31 °C 23 – 24 °C
	Gongoni	40 – 70 mm	Light showers	Moderate showers	Moderate showers	Moderate showers	Light showers	Moderate showers	Light showers	7 m/s	29 – 30 °C 23 – 24 °C

Sub County	Ward	Total weekly amount mm	Probable weather Notes: Light rains < 1-5 mm; Moderate rains 5-20 mm; Heavy rains > 20 mm							Winds in m/s (meters per second)	Temperature (max & Min in °C)	
			Tue	Wed	Thur	Fri	Sat	Sun	Mon	Weekly	Weekly	
	Adu	40 – 70 mm	Moderate showers	Moderate showers	Moderate showers	Moderate showers	Moderate showers	Moderate showers	Moderate showers	Light showers	7 m/s	28– 31 °C 23 – 24 °C
	Garashi	40 – 70 mm	Light showers	Moderate showers	Moderate showers	Moderate showers	Light showers	Moderate showers	Moderate showers	Light showers	7 m/s	28 – 31 °C 23– 24 °C
	Sabaki	40 – 70 mm	Light showers	Moderate showers	Moderate showers	Moderate showers	Light showers	Moderate showers	Moderate showers	Light showers	9 m/s	30 – 31 °C 24 – 25 °C
Malindi	Jilore	60 – 80 mm	Moderate showers	Moderate showers	Moderate showers	Moderate showers	Light showers	Moderate showers	Moderate showers	Light showers	7 m/s	29 – 31 °C 23 – 24 °C
	Kakuyuni	50 – 70 mm	Moderate showers	Moderate showers	Moderate showers	Moderate showers	Light showers	Moderate showers	Moderate showers	Moderate showers	7 m/s	29 – 31 °C 23 – 24 °C
	Ganda	60 – 80 mm	Moderate showers	Moderate showers	Moderate showers	Moderate showers	Light showers	Moderate showers	Moderate showers	Moderate showers	9 m/s	30– 31 °C 24– 25 °C
	Malindi Town	50 – 70 mm	Moderate showers	Moderate showers	Moderate showers	Moderate showers	Light showers	Moderate showers	Moderate showers	Light showers	9 m/s	30 – 31 °C 24 – 25 °C
Kilifi South	Junju	60 – 80 mm	Moderate showers	Moderate showers	Moderate showers	Moderate showers	Moderate showers	Moderate showers	Moderate showers	Light showers	8 m/s	29 – 30 °C 23 – 24 °C
	Mwarakaya	70 – 90 mm	Moderate showers	Heavy showers	Moderate showers	Moderate showers	Moderate showers	Moderate showers	Moderate showers	Light showers	7 m/s	29 – 30 °C 23 – 24 °C
	Chasimba	70 – 90 mm	Moderate showers	Heavy showers	Moderate showers	Moderate showers	Light showers	Moderate showers	Moderate showers	Light showers	7 m/s	29 – 30 °C 23 – 24 °C
	Mtepeni	50 – 70 mm	Moderate showers	Moderate showers	Moderate showers	Moderate showers	Moderate showers	Moderate showers	Moderate showers	Light showers	7 m/s	29 – 30 °C 24 – 25 °C
	Shimo La Tewa	50 – 70 mm	Light showers	Moderate showers	Moderate showers	Moderate showers	Moderate showers	Moderate showers	Moderate showers	Light showers	7 m/s	29 – 30 °C 24 – 25 °C
Kilifi North	Matsangoni	60 – 90 mm	Moderate showers	Moderate showers	Moderate showers	Moderate showers	Light showers	Moderate showers	Moderate showers	Light showers	7 m/s	28 – 29 °C 24 – 25 °C
	Watamu	40 – 70 mm	Light showers	Moderate showers	Moderate showers	Moderate showers	Light showers	Moderate showers	Moderate showers	Light showers	7 m/s	30 – 31 °C 24 – 25 °C

Sub County	Ward	Total weekly amount mm	Probable weather Notes: Light rains < 1-5 mm; Moderate rains 5-20 mm; Heavy rains > 20 mm							Winds in m/s (meters per second)	Temperature (max & Min in °C)
			Tue	Wed	Thur	Fri	Sat	Sun	Mon	Weekly	Weekly
	Mnarani	50 – 70 mm	Moderate showers	Moderate showers	Moderate showers	Moderate showers	Light showers	Moderate showers	Light showers	7 m/s	29 – 30 °C 24 – 25 °C
	Tezo	50 – 70 mm	Moderate showers	Moderate showers	Moderate showers	Moderate showers	Light showers	Moderate showers	Light showers	8 m/s	28 – 30 °C 24 – 25 °C
	Sokoni	30 – 60 mm	Light showers	Moderate showers	Moderate showers	Moderate showers	Light showers	Moderate showers	Light showers	7 m/s	29 – 30 °C 24 – 25 °C
	Dabaso	30 – 60 mm	Light showers	Moderate showers	Moderate showers	Moderate showers	Light showers	Moderate showers	Light showers	7 m/s	29 – 30 °C 24 – 25 °C
	Kibarani	30 – 60 mm	Moderate showers	Moderate showers	Moderate showers	Moderate showers	Light showers	Moderate showers	Light showers	7 m/s	29 – 30 °C 24 – 25 °C
Ganze	Sokoke	50 – 70 mm	Moderate showers	Moderate showers	Moderate showers	Moderate showers	Light showers	Moderate showers	Light showers	7 m/s	29 – 30 °C 23 – 24 °C
	Ganze	50 – 70 mm	Moderate showers	Moderate showers	Moderate showers	Moderate showers	Light showers	Moderate showers	Light showers	7 m/s	29 – 30 °C 23 – 24 °C
	Jaribuni	50 – 70 mm	Moderate showers	Moderate showers	Moderate showers	Moderate showers	Light showers	Moderate showers	Light showers	7 m/s	29 – 30 °C 23 – 24 °C
	Bamba	30 – 60 mm	Light showers	Moderate showers	Moderate showers	Moderate showers	Light showers	Moderate showers	Moderate showers	7 m/s	29 – 30 °C 22 – 23 °C
Kaloleni	Mariakani	50 – 70 mm	Moderate showers	Moderate showers	Moderate showers	Moderate showers	Light showers	Moderate showers	Light showers	6 m/s	29 – 31 °C 22-23 °C
	Kayafungo	50 – 70 mm	Moderate showers	Moderate showers	Moderate showers	Moderate showers	Light showers	Moderate showers	Light showers	7 m/s	29 – 30 °C 22 – 23 °C
	Kaloleni	50 – 70 mm	Moderate showers	Moderate showers	Moderate showers	Moderate showers	Light showers	Moderate showers	Light showers	7 m/s	29 – 30 °C 22 - 23 °C
	Mwana Mwinga	50 – 70 mm	Moderate showers	Moderate showers	Moderate showers	Moderate showers	Light showers	Moderate showers	Light showers	7 m/s	29– 30 °C 22 – 23 °C
Rabai	Rabai	60 – 80 mm	Moderate showers	Heavy showers	Moderate showers	Moderate showers	Light showers	Moderate showers	Moderate showers	9 m/s	29 – 31 °C 22 – 23 °C

Sub County	Ward	Total weekly amount mm	Probable weather Notes: Light rains < 1-5 mm; Moderate rains 5-20 mm; Heavy rains > 20 mm							Winds in m/s (meters per second)	Temperature (max & Min in °C)
			Tue	Wed	Thur	Fri	Sat	Sun	Mon	Weekly	Weekly
	Kambe/Ribe	60 – 80 mm	Moderate showers	Moderate showers	Moderate showers	Moderate showers	Light showers	Moderate showers	Moderate showers	7 m/s	29 – 30 °C 23 – 24 °C
	Ruruma	60 – 80 mm	Moderate showers	Moderate showers	Moderate showers	Moderate showers	Light showers	Moderate showers	Moderate showers	9 m/s	29 – 30 °C 23 - 24 °C
	Mwawesa	60 – 80 mm	Moderate showers	Moderate showers	Moderate showers	Moderate showers	Light showers	Moderate showers	Moderate showers	9 m/s	29 – 30 °C 24 - 25 °C

**2. PART II: Weekly Rainfall Performance: 14<sup>th</sup> – 20<sup>th</sup> November 2023**

- Cumulative Rainfall of > 50 mm experienced within the week. Some wards received more than (>) 100 mm of rainfall ( Mwarakaya, Mariakani, Chasimba, Shimo La Tewa, Ruruma, Mtepeni, Mnarani and Mwanamwinga)

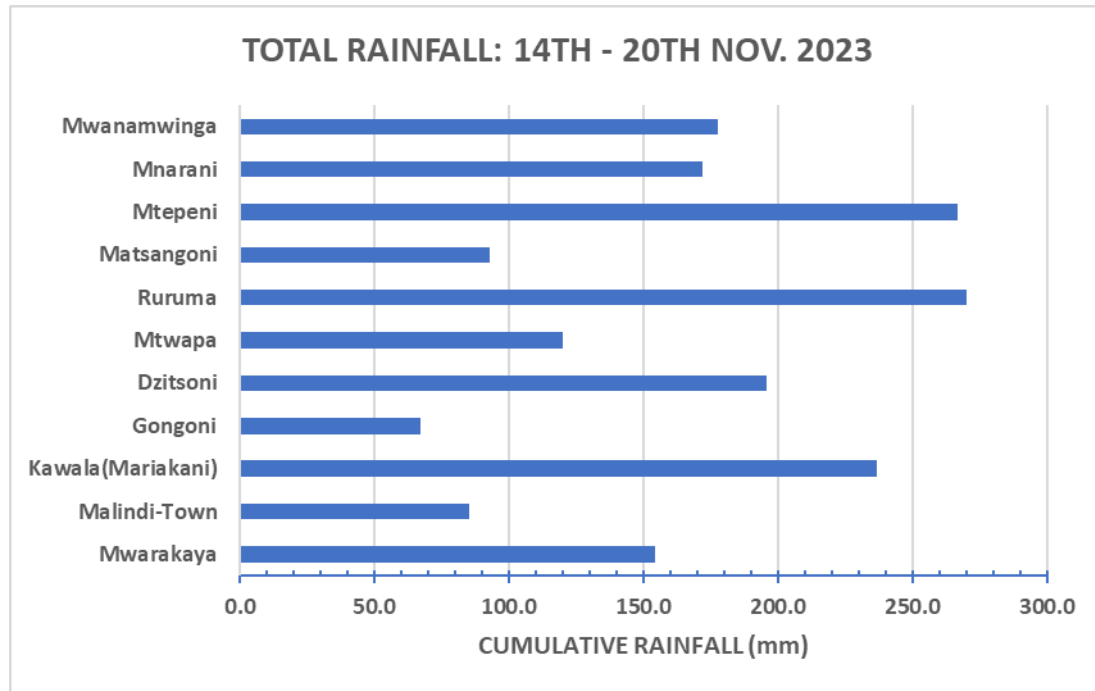
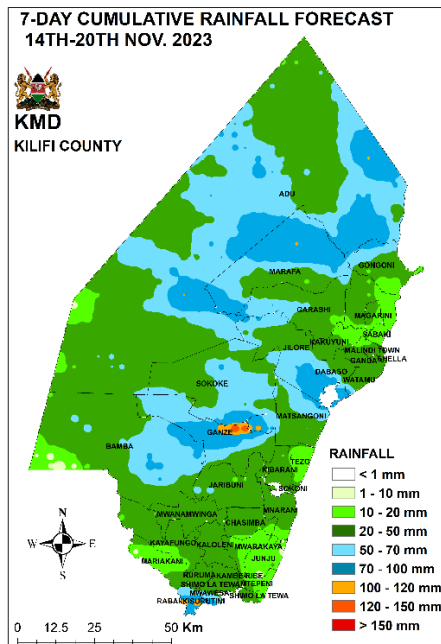
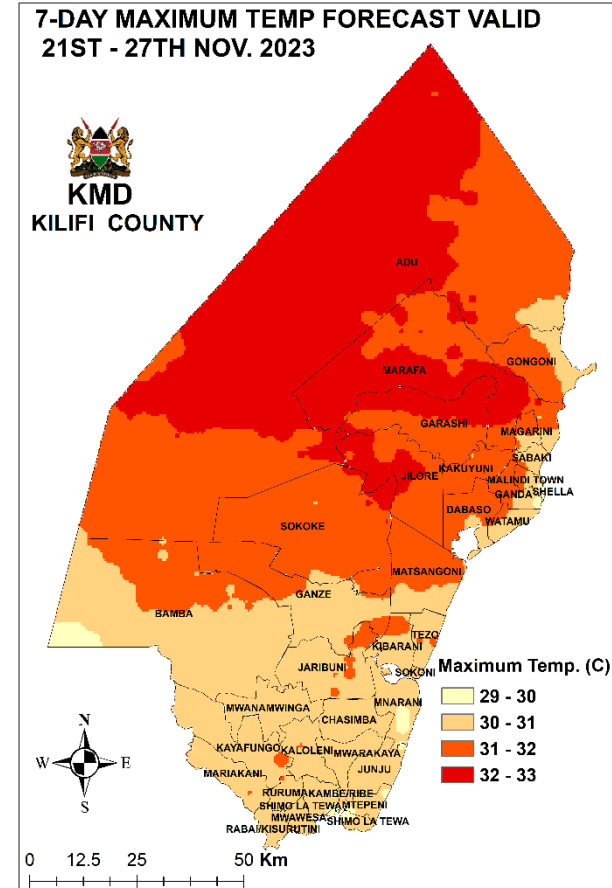
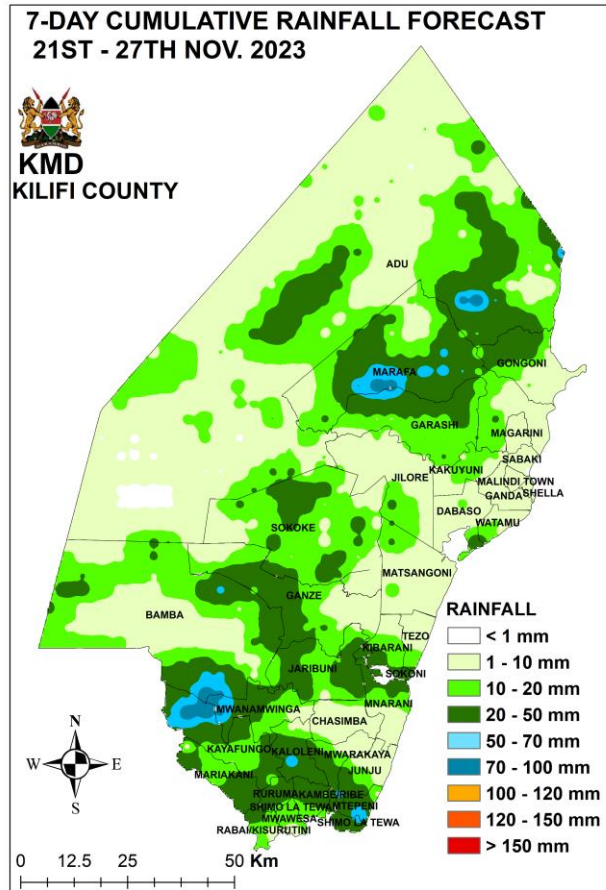


Figure 1. Past weeks' (14<sup>th</sup> – 20<sup>th</sup> Nov. 2023) rain forecast map (a) and observed rainfall (b)

### 3. PART III: Weekly forecast map



#### Summary:

Less rainfall intensity (compared to the previous week) expected. Maximum temperature range of 29 °C – 32° C is expected in most places, and a minimum temperature of 22 °C – 25 °C.

**4. PART IV: Marine Forecast (Indian Ocean)**

- Slight to Moderate Ocean conditions with wave heights of 0.9 -1.3 m are expected during the forecast week.
- Gentle breeze to Fresh breeze of 3 – 8 m/s (5.8 – 15.6 Kt) are expected. Small boats are likely to be filled with water sprays and become unstable. Caution is advised in carrying out marine activities.

	Tue	Wed	Thur	Fri	Sat	Sun	Mon
Significant Wave height	1.0 – 1.1 m	1.0 – 1.1 m	1.1 – 1.2 m	1.1 – 1.6 m	1.6 – 1.7 m	1.2 – 1.5 m	1.1 – 1.7 m
Max. wind	5 m/s	3 m/s	5 m/s	7 m/s	8 m/s	6 m/s	5 m/s

**5. PART III: Key on Ocean State**

(A)	WAVE HEIGHT RANGE (Metres)	DESCRIPTION	IMPACT
	0.6 – 1.0 m (≈ 1.8 – 3.0 ft)	Slight	Conditions Suitable for Marine Activities
	1.0 – 1.9 m (≈ 3.0 – 5.7 ft)	Slight – Moderate	
	2.0 – 2.9 m (≈ 6.0 – 8.7 ft)	Moderate – Rough	Caution on operating marine activities
	3.0 – 4.0 m (≈ 9.0 – 12.0 ft)	Rough	Warning in place!!! Warning in place and marine activities on hold
	4.1 – 5.5 m (≈ 12.3 – 16.5 ft)	Very Rough	
(B)	WIND RANGE	DESCRIPTION	IMPACT
	< 1 – 7 Knots	Calm to Light breeze	1 – 6 Knots; the ocean is relatively calm with very little disturbance. Suitable for Marine operations
	7 – 21 Knots	Gentle breeze to Fresh breeze	7 – 17 Knots; Small boats are likely to be filled with water sprays and become unstable. Caution in carrying out marine activities
	22 - ≥ 34 Knots	Strong breeze to Extremely Strong breeze	More than 21 Knots: the ocean state is very much disturbed and the prevailing conditions are dangerous for marine operations. Warning in place.