



For further info:
Contact Dr. Geoffrey Ogutu
Mobile No. 0746423989
Email: cdmkilifi@meteo.go.ke; cdmkilifi@gmail.com
County Director of Meteorological Services Kilifi County

Weekly Weather Forecast for Kilifi County for 5th – 11th December 2023

1. PART I: Detailed Weather forecasts by Ward

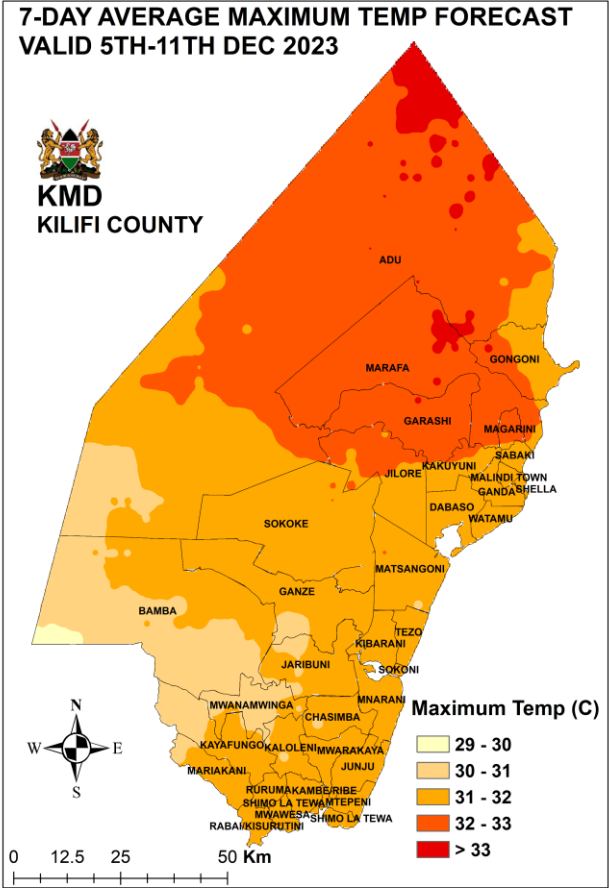
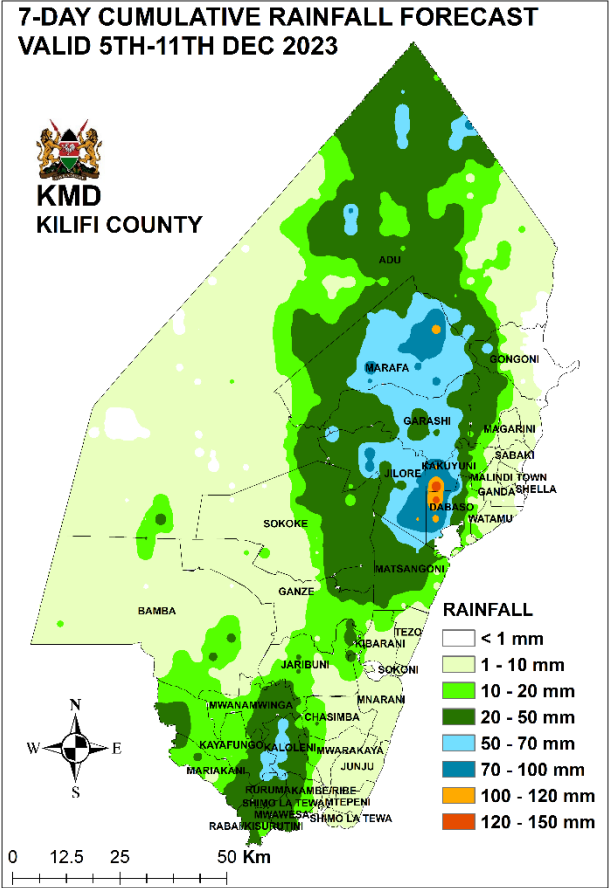
Sub County	Ward	Total weekly amount mm	Probable weather Notes: Light rains < 1-5 mm; Moderate rains 5-20 mm; Heavy rains > 20 mm							Winds in m/s (meters per second)	Temperature (max & Min in °C)
			Tue	Wed	Thur	Fri	Sat	Sun	Mon	Weekly	Weekly
Magarini	Marafa	20 – 35 mm	Light showers	Moderate showers	Dry day	Moderate showers	Light showers	Light showers	Dry day	6 m/s	30 – 32 °C 23 – 24 °C
	Magarini	20 – 35 mm	Light showers	Light showers	Dry day	Moderate showers	Light showers	Light showers	Dry day	5 m/s	30 – 32 °C 23 – 25 °C
	Gongoni	15 – 30 mm	Light showers	Light showers	Dry day	Moderate showers	Light showers	Light showers	Light showers	6 m/s	30 – 31 °C 23 – 24 °C

Sub County	Ward	Total weekly amount mm	Probable weather Notes: Light rains < 1-5 mm; Moderate rains 5-20 mm; Heavy rains > 20 mm							Winds in m/s (meters per second)	Temperature (max & Min in °C)
			Tue	Wed	Thur	Fri	Sat	Sun	Mon	Weekly	Weekly
	Adu	25 – 40 mm	Light showers	Light showers	Light showers	Moderate showers	Light showers	Moderate showers	Light showers	7 m/s	30– 31 °C 23 – 24 °C
	Garashi	25 – 40 mm	Moderate showers	Light showers	Light showers	Moderate showers	Light showers	Moderate showers	Dry day	6 m/s	31 – 33 °C 24– 25 °C
	Sabaki	25 – 40 mm	Light showers	Light showers	Dry day	Moderate showers	Moderate showers	Moderate showers	Dry day	8 m/s	30 – 31 °C 24 – 25 °C
Malindi	Jilore	25 – 45 mm	Moderate showers	Light showers	Light showers	Moderate showers	Light showers	Moderate showers	Dry day	6 m/s	31 – 33 °C 24 – 25 °C
	Kakuyuni	25 – 45 mm	Light showers	Light showers	Light showers	Moderate showers	Moderate showers	Moderate showers	Dry day	8 m/s	30 – 31 °C 23 – 24 °C
	Ganda	25 – 45 mm	Light showers	Light showers	Light showers	Moderate showers	Moderate showers	Moderate showers	Dry day	8 m/s	30– 31 °C 23– 24 °C
	Malindi Town	25 – 45 mm	Light showers	Light showers	Light showers	Moderate showers	Light showers	Moderate showers	Dry day	7 m/s	30 – 31 °C 24 – 25 °C
Kilifi South	Junju	30 – 55 mm	Moderate showers	Light showers	Light showers	Moderate showers	Moderate showers	Moderate showers	Dry day	6 m/s	30 – 31 °C 24 – 25 °C
	Mwarakaya	30 – 55 mm	Moderate showers	Light showers	Light showers	Moderate showers	Moderate showers	Moderate showers	Dry day	5 m/s	30 – 31 °C 23 – 24 °C
	Chasimba	30 – 55 mm	Light showers	Light showers	Light showers	Moderate showers	Moderate showers	Moderate showers	Dry day	5 m/s	30 – 31 °C 23 – 24 °C
	Mtepeni	30 – 55 mm	Moderate showers	Moderate showers	Light showers	Moderate showers	Moderate showers	Moderate showers	Dry day	5 m/s	30 – 31 °C 24 – 25 °C
	Shimo La Tewa	30 – 55 mm	Light showers	Light showers	Light showers	Moderate showers	Moderate showers	Moderate showers	Dry day	6 m/s	30 – 31 °C 24 – 25 °C
Kilifi North	Matsangoni	20 – 45 mm	Light showers	Light showers	Light showers	Moderate showers	Light showers	Moderate showers	Dry day	6 m/s	29 – 31 °C 24 – 25 °C
	Watamu	20 – 45 mm	Light showers	Light showers	Light showers	Moderate showers	Light showers	Moderate showers	Dry day	6 m/s	30 – 31 °C 24 – 25 °C

Sub County	Ward	Total weekly amount mm	Probable weather Notes: Light rains < 1-5 mm; Moderate rains 5-20 mm; Heavy rains > 20 mm							Winds in m/s (meters per second)	Temperature (max & Min in °C)
			Tue	Wed	Thur	Fri	Sat	Sun	Mon	Weekly	Weekly
	Mnarani	20 – 45 mm	<i>Light showers</i>	<i>Light showers</i>	<i>Light showers</i>	<i>Moderate showers</i>	<i>Light showers</i>	<i>Moderate showers</i>	<i>Dry day</i>	6 m/s	30 – 31 °C 24 – 25 °C
	Tezo	20 – 45 mm	<i>Moderate showers</i>	<i>Light showers</i>	<i>Light showers</i>	<i>Moderate showers</i>	<i>Moderate showers</i>	<i>Moderate showers</i>	<i>Light showers</i>	6 m/s	30 – 31 °C 24 – 25 °C
	Sokoni	20 – 45 mm	<i>Light showers</i>	<i>Light showers</i>	<i>Light showers</i>	<i>Moderate showers</i>	<i>Light showers</i>	<i>Moderate showers</i>	<i>Light showers</i>	5 m/s	30 – 31 °C 24 – 25 °C
	Dabaso	20 – 45 mm	<i>Moderate showers</i>	<i>Light showers</i>	<i>Light showers</i>	<i>Moderate showers</i>	<i>Moderate showers</i>	<i>Moderate showers</i>	<i>Dry day</i>	6 m/s	30 – 31 °C 24 – 25 °C
	Kibarani	20 – 45 mm	<i>Moderate showers</i>	<i>Light showers</i>	<i>Light showers</i>	<i>Moderate showers</i>	<i>Moderate showers</i>	<i>Moderate showers</i>	<i>Dry day</i>	6 m/s	30 – 31 °C 24 – 25 °C
Ganze	Sokoke	30 – 50 mm	<i>Moderate showers</i>	<i>Light showers</i>	<i>Light showers</i>	<i>Moderate showers</i>	<i>Moderate showers</i>	<i>Moderate showers</i>	<i>Light showers</i>	6 m/s	30 – 31 °C 23 – 24 °C
	Ganze	20 – 40 mm	<i>Light showers</i>	<i>Light showers</i>	<i>Light showers</i>	<i>Moderate showers</i>	<i>Light showers</i>	<i>Moderate showers</i>	<i>Light showers</i>	6 m/s	30 – 31 °C 23 – 24 °C
	Jaribuni	20 – 40 mm	<i>Light showers</i>	<i>Light showers</i>	<i>Light showers</i>	<i>Moderate showers</i>	<i>Light showers</i>	<i>Moderate showers</i>	<i>Light showers</i>	6 m/s	30 – 31 °C 23 – 24 °C
	Bamba	20 – 40 mm	<i>Light showers</i>	<i>Light showers</i>	<i>Light showers</i>	<i>Light showers</i>	<i>Light showers</i>	<i>Moderate showers</i>	<i>Light showers</i>	6 m/s	30 – 31 °C 22 – 23 °C
Kaloleni	Mariakani	30 – 50 mm	<i>Moderate showers</i>	<i>Light showers</i>	<i>Light showers</i>	<i>Moderate showers</i>	<i>Light showers</i>	<i>Moderate showers</i>	<i>Dry day</i>	6 m/s	30 – 31 °C 23-24 °C
	Kayafungo	30 – 50 mm	<i>Moderate showers</i>	<i>Light showers</i>	<i>Light showers</i>	<i>Light showers</i>	<i>Light showers</i>	<i>Moderate showers</i>	<i>Dry day</i>	6 m/s	30 – 31 °C 23 – 24 °C
	Kaloleni	30 – 50 mm	<i>Moderate showers</i>	<i>Light showers</i>	<i>Light showers</i>	<i>Moderate showers</i>	<i>Moderate showers</i>	<i>Moderate showers</i>	<i>Dry day</i>	6 m/s	30 – 31 °C 23 - 24 °C
	Mwana Mwinga	30 – 50 mm	<i>Moderate showers</i>	<i>Light showers</i>	<i>Light showers</i>	<i>Light showers</i>	<i>Light showers</i>	<i>Moderate showers</i>	<i>Dry day</i>	6 m/s	30– 31 °C 22 – 23 °C
Rabai	Rabai	30 – 55 mm	<i>Moderate showers</i>	<i>Moderate showers</i>	<i>Light showers</i>	<i>Moderate showers</i>	<i>Moderate showers</i>	<i>Moderate showers</i>	<i>Light showers</i>	9 m/s	31 – 32 °C 23 – 24 °C

Sub County	Ward	Total weekly amount mm	Probable weather Notes: Light rains < 1-5 mm; Moderate rains 5-20 mm; Heavy rains > 20 mm							Winds in m/s (meters per second)	Temperature (max & Min in °C)
			Tue	Wed	Thur	Fri	Sat	Sun	Mon	Weekly	Weekly
	Kambe/Ribe	30 – 55 mm	<i>Moderate showers</i>	<i>Moderate showers</i>	<i>Light showers</i>	<i>Moderate showers</i>	<i>Moderate showers</i>	<i>Moderate showers</i>	<i>Dry day</i>	6 m/s	30 – 31 °C 24 – 25 °C
	Ruruma	30 – 55 mm	<i>Moderate showers</i>	<i>Moderate showers</i>	<i>Light showers</i>	<i>Moderate showers</i>	<i>Moderate showers</i>	<i>Moderate showers</i>	<i>Dry day</i>	6 m/s	30 – 31 °C 24 - 25 °C
	Mwawesa	30 – 55 mm	<i>Moderate showers</i>	<i>Moderate showers</i>	<i>Light showers</i>	<i>Moderate showers</i>	<i>Moderate showers</i>	<i>Moderate showers</i>	<i>Dry day</i>	8 m/s	30 – 33 °C 24 - 25 °C

2. PART II: Weekly rainfall and temperature distribution forecast map



3. PART IV: Marine Forecast (Indian Ocean)

- Slight to Moderate Ocean conditions with wave heights of 0.6 -1.0 m are expected during the forecast week.
- Gentle breeze to Fresh breeze of 5 – 6 m/s (9.7 – 11.7 Kt) are expected. Small boats are likely to be filled with water sprays and become unstable. Caution is advised in carrying out marine activities.

	Tue	Wed	Thur	Fri	Sat	Sun	Mon
Significant Wave height	0.5 – 0.8 m	0.5 – 0.8 m	0.4 – 0.7 m	0.4 – 0.7 m	0.4 – 0.6 m	0.4 – 0.7 m	0.5- 1.0 m
Max. wind	5 m/s	6 m/s	5 m/s	5 m/s	5 m/s	5 m/s	6 m/s

4. PART III: Key on Ocean State

(A)	WAVE HEIGHT RANGE (Metres)	DESCRIPTION	IMPACT
	0.6 – 1.0 m (≈ 1.8 – 3.0 ft)	Slight	Conditions Suitable for Marine Activities
	1.0 – 1.9 m (≈ 3.0 – 5.7 ft)	Slight – Moderate	
	2.0 – 2.9 m (≈ 6.0 – 8.7 ft)	Moderate – Rough	Caution on operating marine activities
	3.0 – 4.0 m (≈ 9.0 – 12.0 ft)	Rough	Warning in place!!! Warning in place and marine activities on hold
	4.1 – 5.5 m (≈ 12.3 – 16.5 ft)	Very Rough	
(B)	WIND RANGE	DESCRIPTION	IMPACT
	< 1 – 7 Knots	Calm to Light breeze	1 – 6 Knots; the ocean is relatively calm with very little disturbance. Suitable for Marine operations
	7 – 21 Knots	Gentle breeze to Fresh breeze	7 – 17 Knots; Small boats are likely to be filled with water sprays and become unstable. Caution in carrying out marine activities
	22 - ≥ 34 Knots	Strong breeze to Extremely Strong breeze	More than 21 Knots: the ocean state is very much disturbed and the prevailing conditions are dangerous for marine operations. Warning in place.