



For further info:
 Contact Daniel M. Mbithi
 Mobile No. 0715255171
 Email: mbithi_d@yahoo.com
 County Director of Meteorological Services Kitui County

Weekly Weather forecast for Kitui County

1.1 PART I: WEEKLY FORECAST FOR THE PERIOD 5th to 11th December 2023 Weather forecast Table

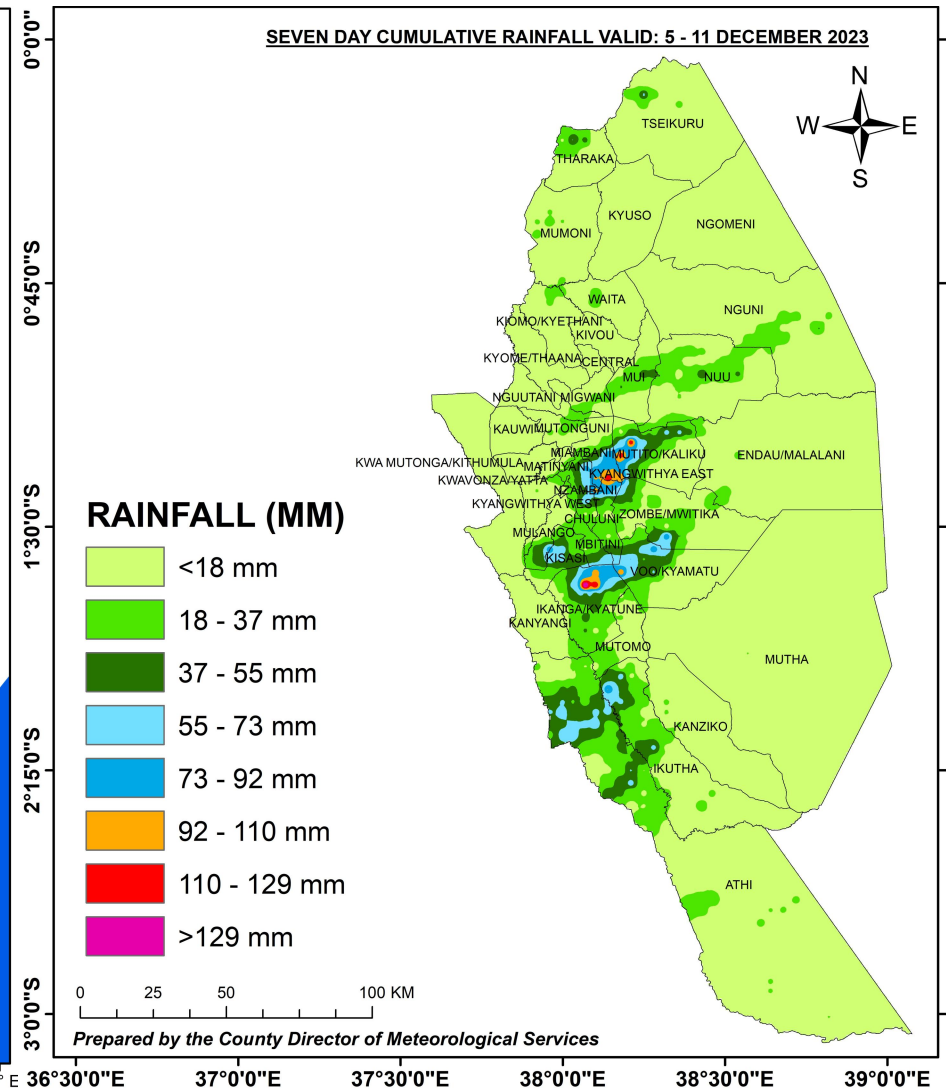
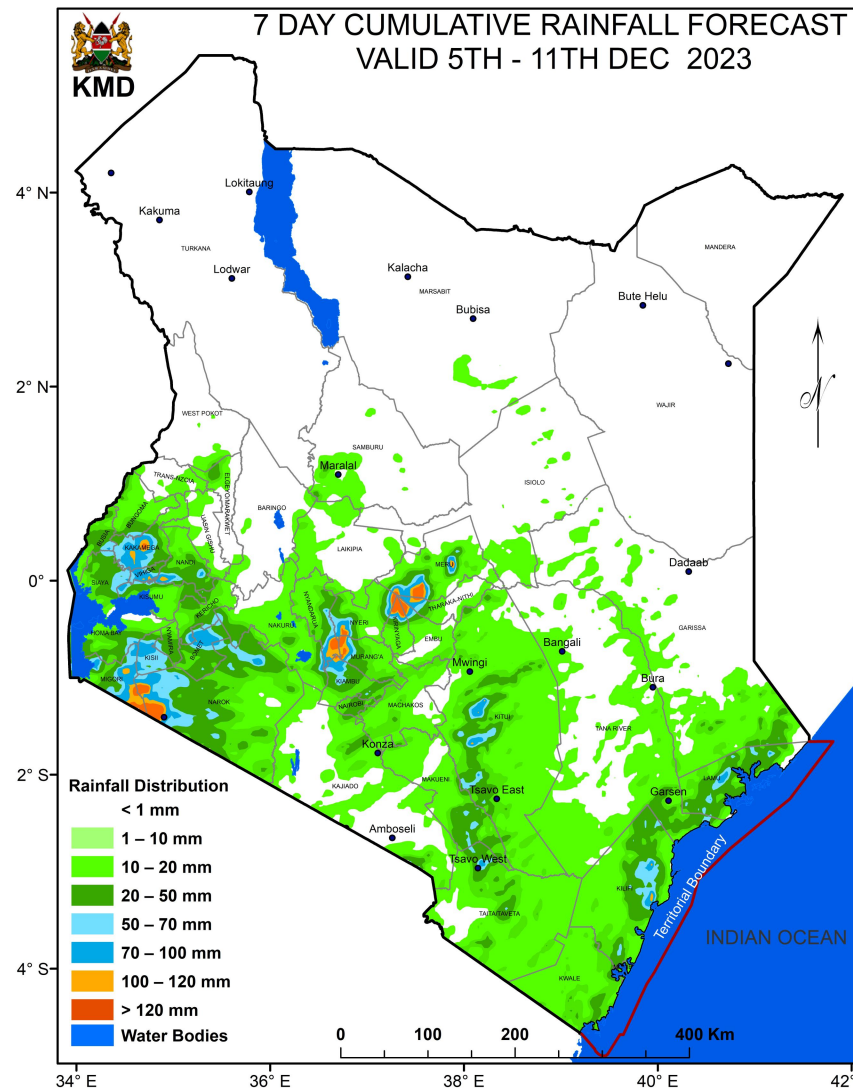
Sub County	Ward	Probable Total weekly amount (mm)	Probable weather							Winds (km/h kilometers per hour)	Temp (Tmax °C & Tmin °C)
			Notes: Light rains <1-5 mm; Moderate rains 5-20 mm; Heavy rains >20 mm							Weekly	Weekly
			Tue	Wed	Thur	Fri	Sat	Sun	Mon		
Mwingi West	Nguutani	<30 mm	Light rains	Light rains	No rains	Light rains	Moderate rains	Moderate rains	Light rains	Easterly 10.8 km/h	Max 25-27 °C Min 16-18 °C
	Kyome/Thaana	<30 mm	Light rains	Light rains	No rains	Light rains	Moderate rains	Moderate rains	Light rains	Easterly 10.8 km/h	Max 24-27 °C Min 16-18 °C
	Kiomo/Kyethani	<30 mm	Light rains	No rains	No rains	No rains	Moderate rains	Moderate rains	Light rains	Easterly 10.8 km/h	Max 26-29 °C Min 18-19 °C
	Migwani	<30 mm	Light rains	No rains	No rains	No rains	Moderate rains	Moderate rains	Light rains	Easterly 10.8 km/h	Max 26-29 °C Min 18-19 °C
Mwingi	Ngomeni	<30 mm	Light rains	No rains	No rains	Light rains	Moderate	Light rains	Light rains	Easterly 10.8	Max 28-30 °C

Sub County	Ward	Probable Total weekly amount (mm)	Probable weather Notes: Light rains <1-5 mm; Moderate rains 5-20 mm; Heavy rains >20 mm							Winds (km/h kilometers per hour)	Temp (Tmax °C & Tmin °C)
			Tue	Wed	Thur	Fri	Sat	Sun	Mon	Weekly	Weekly
North							<i>rains</i>			km/h	Min 20 °C
	Kyuso	<30 mm	<i>Light rains</i>	<i>No rains</i>	<i>No rains</i>	<i>No rains</i>	<i>Moderate rains</i>	<i>Moderate rains</i>	<i>Light rains</i>	Easterly 10.8 km/h	Max 27-28 °C Min 18-20 °C
	Tseikuru	<30 mm	<i>No rains</i>	<i>No rains</i>	<i>No rains</i>	<i>No rains</i>	<i>Moderate rains</i>	<i>Light rains</i>	<i>Light rains</i>	Easterly 7.2 km/h	Max 30-32 °C Min 21-22 °C
	Tharaka	<30 mm	<i>No rains</i>	<i>No rains</i>	<i>No rains</i>	<i>No rains</i>	<i>Moderate rains</i>	<i>Moderate rains</i>	<i>Light rains</i>	Easterly 7.2 km/h	Max 30-32 °C Min 20-21 °C
	Mumoni	<30 mm	<i>Light rains</i>	<i>Light rains</i>	<i>No rains</i>	<i>Light rains</i>	<i>Light rains</i>	<i>Moderate rains</i>	<i>Light rains</i>	Easterly 10.8 km/h	Max 27-29 °C Min 18-21 °C
Mwingi Central	Central	<30 mm	<i>Light rains</i>	<i>No rains</i>	<i>No rains</i>	<i>Light rains</i>	<i>Moderate rains</i>	<i>Moderate rains</i>	<i>Light rains</i>	Easterly 10.8 km/h	Max 26-29 °C Min 19-20 °C
	Kivou	<30 mm	<i>Light rains</i>	<i>No rains</i>	<i>No rains</i>	<i>Light rains</i>	<i>Moderate rains</i>	<i>Moderate rains</i>	<i>Light rains</i>	Easterly 10.8 km/h	Max 26-29 °C Min 19-20 °C
	Mui	<30 mm	<i>Light rains</i>	<i>No rains</i>	<i>No rains</i>	<i>Light rains</i>	<i>Moderate rains</i>	<i>Moderate rains</i>	<i>Light rains</i>	Easterly 10.8 km/h	Max 27-29 °C Min 19-20 °C
	Waita	<30 mm	<i>Light rains</i>	<i>Light rains</i>	<i>No rains</i>	<i>Light rains</i>	<i>Moderate rains</i>	<i>Moderate rains</i>	<i>Light rains</i>	Easterly 10.8 km/h	Max 25-29 °C Min 18-19 °C
	Nuu	<30 mm	<i>Light rains</i>	<i>No rains</i>	<i>Light rains</i>	<i>Light rains</i>	<i>Moderate rains</i>	<i>Light rains</i>	<i>Light rains</i>	Easterly 10.8 km/h	Max 28-30 °C Min 20-21 °C
	Nguni	<30 mm	<i>Light rains</i>	<i>No rains</i>	<i>No rains</i>	<i>Light rains</i>	<i>Moderate rains</i>	<i>Light rains</i>	<i>Light rains</i>	Easterly 10.8 km/h	Max 28-30 °C Min 19-21 °C
Kitui South	Ikanga/Kyatune	>30 mm	<i>Light rains</i>	<i>Moderate rains</i>	<i>Light rains</i>	<i>Moderate rains</i>	<i>Moderate rains</i>	<i>Moderate rains</i>	<i>Light rains</i>	Easterly 10.8 km/h	Max 27-28 °C Min 19-20 °C
	Mutomo/Kibwea	>30 mm	<i>Moderate rains</i>	<i>Moderate rains</i>	<i>Light rains</i>	<i>Heavy rains</i>	<i>Moderate rains</i>	<i>Moderate rains</i>	<i>Light rains</i>	Easterly 10.8 km/h	Max 27-29 °C Min 19-20 °C
	Kanziko/Simisi	>30 mm	<i>Moderate</i>	<i>Light rains</i>	<i>Light rains</i>	<i>Moderate</i>	<i>Moderate</i>	<i>Moderate</i>	<i>Light rains</i>	Easterly 10.8 km/h	Max 28-30 °C

Sub County	Ward	Probable Total weekly amount (mm)	Probable weather Notes: Light rains <1-5 mm; Moderate rains 5-20 mm; Heavy rains >20 mm							Winds (km/h kilometers per hour)	Temp (Tmax °C & Tmin °C)
			Tue	Wed	Thur	Fri	Sat	Sun	Mon	Weekly	Weekly
			<i>rains</i>			<i>rains</i>	<i>rains</i>	<i>rains</i>			Min 20-21 °C
	Mutha	>30 mm	<i>Light rains</i>	<i>Light rains</i>	<i>Moderate rains</i>	<i>Moderate rains</i>	<i>Moderate rains</i>	<i>Moderate rains</i>	<i>Light rains</i>	Easterly 10.8 km/h	Max 27-30 °C Min 20-21 °C
	Ikutha	>30 mm	<i>Moderate rains</i>	<i>Light rains</i>	<i>Light rains</i>	<i>Moderate rains</i>	<i>Moderate rains</i>	<i>Moderate rains</i>	<i>Light rains</i>	Easterly 10.8 km/h	Max 27-29 °C Min 19-20 °C
	Athi	>30 mm	<i>Light rains</i>	<i>Light rains</i>	<i>Moderate rains</i>	<i>Moderate rains</i>	<i>Moderate rains</i>	<i>Moderate rains</i>	<i>Light rains</i>	Easterly 10.8 km/h	Max 27-30 °C Min 20-21 °C
Kitui East	Chuluni	>30 mm	<i>Moderate rains</i>	<i>Moderate rains</i>	<i>Light rains</i>	<i>Light rains</i>	<i>Moderate rains</i>	<i>Moderate rains</i>	<i>Light rains</i>	Easterly 10.8 km/h	Max 26-28 °C Min 18-19 °C
	Nzambani	>30 mm	<i>Light rains</i>	<i>Light rains</i>	<i>Light rains</i>	<i>Light rains</i>	<i>Moderate rains</i>	<i>Moderate rains</i>	<i>Light rains</i>	Easterly 10.8 km/h	Max 25-28 °C Min 18-19 °C
	Mutito/Kaliku	<30 mm	<i>Light rains</i>	<i>Light rains</i>	<i>Light rains</i>	<i>Light rains</i>	<i>Moderate rains</i>	<i>Moderate rains</i>	<i>Light rains</i>	Easterly 7.2 km/h	Max 28-29 °C Min 19-20 °C
	Zombe/Mwitika	>30 mm	<i>Light rains</i>	<i>Moderate rains</i>	<i>Moderate rains</i>	<i>Moderate rains</i>	<i>Moderate rains</i>	<i>Moderate rains</i>	<i>Light rains</i>	Easterly 7.2 km/h	Max 28-30 °C Min 20-21 °C
	Voo/Kyamatu	>30 mm	<i>Light rains</i>	<i>Moderate rains</i>	<i>Moderate rains</i>	<i>Moderate rains</i>	<i>Heavy rains</i>	<i>Moderate rains</i>	<i>Light rains</i>	Easterly 7.2 km/h	Max 29-31 °C Min 20-21 °C
	Endau/Malalani	>30 mm	<i>Light rains</i>	<i>Light rains</i>	<i>Light rains</i>	<i>Light rains</i>	<i>Heavy rains</i>	<i>Moderate rains</i>	<i>Light rains</i>	Easterly 7.2 km/h	Max 29-31 °C Min 20-21 °C
Kitui Rural	Mbitini	>30 mm	<i>Light rains</i>	<i>Light rains</i>	<i>Moderate rains</i>	<i>Light rains</i>	<i>Moderate rains</i>	<i>Moderate rains</i>	<i>Light rains</i>	Easterly 10.8 km/h	Max 26-28 °C Min 19-20 °C
	Kisasi	>30 mm	<i>Light rains</i>	<i>Light rains</i>	<i>Moderate rains</i>	<i>Light rains</i>	<i>Moderate rains</i>	<i>Heavy rains</i>	<i>Light rains</i>	Easterly 10.8 km/h	Max 26-28 °C Min 18-19 °C
	Kyangi	<30 mm	<i>Moderate rains</i>	<i>Light rains</i>	<i>Light rains</i>	<i>Moderate rains</i>	<i>Moderate rains</i>	<i>Moderate rains</i>	<i>Light rains</i>	Easterly 10.8 km/h	Max 26-28 °C Min 17-18 °C
	Yatta/Kwa Vonza	>30 mm	<i>Moderate</i>	<i>Moderate</i>	<i>Light rains</i>	<i>Light rains</i>	<i>Moderate</i>	<i>Heavy rains</i>	<i>Light rains</i>	Easterly 10.8 km/h	Max 25-29 °C

Sub County	Ward	Probable Total weekly amount (mm)	Probable weather Notes: Light rains <1-5 mm; Moderate rains 5-20 mm; Heavy rains >20 mm							Winds (km/h kilometers per hour)	Temp (Tmax °C & Tmin °C)
			Tue	Wed	Thur	Fri	Sat	Sun	Mon	Weekly	Weekly
			<i>rains</i>	<i>rains</i>			<i>rains</i>				Min 17-19 °C
Kitui West	Kauwi	<30 mm	<i>Light rains</i>	<i>Moderate rains</i>	<i>No rains</i>	<i>Light rains</i>	<i>Moderate rains</i>	<i>Moderate rains</i>	<i>Light rains</i>	Easterly 10.8 km/h	Max 24-28 °C Min 17-18 °C
	Mutonguni	<30 mm	<i>Light rains</i>	<i>Light rains</i>	<i>No rains</i>	<i>Light rains</i>	<i>Moderate rains</i>	<i>Moderate rains</i>	<i>Light rains</i>	Easterly 10.8 km/h	Max 24-26 °C Min 16-17 °C
	Matinyani	<30 mm	<i>Light rains</i>	<i>Moderate rains</i>	<i>No rains</i>	<i>Light rains</i>	<i>Moderate rains</i>	<i>Moderate rains</i>	<i>Light rains</i>	Easterly 10.8 km/h	Max 25-28 °C Min 17-18 °C
	Kwa Mutonga/Kithumula	<30 mm	<i>Light rains</i>	<i>Moderate rains</i>	<i>No rains</i>	<i>Light rains</i>	<i>Moderate rains</i>	<i>Moderate rains</i>	<i>Light rains</i>	Easterly 10.8 km/h	Max 24-29 °C Min 17-18 °C
Kitui Central	Kyangwithya East	<30 mm	<i>Light rains</i>	<i>Moderate rains</i>	<i>No rains</i>	<i>Light rains</i>	<i>Moderate rains</i>	<i>Moderate rains</i>	<i>Light rains</i>	Easterly 10.8 km/h	Max 25-27 °C Min 17-18 °C
	Kyangwithya West	>30 mm	<i>Moderate rains</i>	<i>Moderate rains</i>	<i>Light rains</i>	<i>Light rains</i>	<i>Moderate rains</i>	<i>Moderate rains</i>	<i>Light rains</i>	Easterly 10.8 km/h	Max 26-28 °C Min 18-19 °C
	Mulango	>30 mm	<i>Moderate rains</i>	<i>Moderate rains</i>	<i>Light rains</i>	<i>Light rains</i>	<i>Moderate rains</i>	<i>Moderate rains</i>	<i>Light rains</i>	Easterly 10.8 km/h	Max 26-28 °C Min 18-19 °C
	Township	>30 mm	<i>Moderate rains</i>	<i>Moderate rains</i>	<i>Light rains</i>	<i>Light rains</i>	<i>Moderate rains</i>	<i>Moderate rains</i>	<i>Light rains</i>	Easterly 10.8 km/h	Max 26-28 °C Min 18-19 °C
	Miambani	<30 mm	<i>Light rains</i>	<i>Light rains</i>	<i>No rains</i>	<i>Light rains</i>	<i>Moderate rains</i>	<i>Moderate rains</i>	<i>Light rains</i>	Easterly 10.8 km/h	Max 27-29 °C Min 19-20 °C

1.2 PART II: WEEKLY RAINFALL FORECAST MAPS



The weather forecast maps for Kenya and Kitui County; valid: 5th to 11th December 2023

1.3 PART III: FURTHER ADVISORIES

Summary

The County is expected to experience light to moderate rainfall over most places with a few places receiving moderate to heavy rainfall over the weekend. Maximum temperatures are expected to range from 24°C - 32°C, while minimum temperatures are expected to range from 16°C - 22°C. *In light of this weather forecast, farmers are advised to consult with respective local agricultural extension officers from the County Ministry of Agriculture and Livestock for advice on the best farm practices.*

Note: 1 mm of rainfall is equivalent to 1 litre of rainfall per square meter.

KEY OF SCIENTIFIC WORDS USED

Rainfall categories	
Range	Category
<2 mm	Light
5 - 20mm	Moderate
20 - 50mm	Heavy
>50mm	Very heavy

Rainfall coverage	
Term	Meaning
Most Places	Between 66% and 100%
Several Places	Between 33% and 66%
Few Places	Below 33%

Ushauri wa Idara ya Utabiri wa Hali ya Hewa:

Wiki hii kuna uwezekano wa mvua ya kiwango cha chini hadi cha wastani kuendelea kunyesha katika maeneo mengi ya kaunti ya Kitui. Huenda maeneo machache yakapata mvua ya kiwango cha juu siku za mwisho za huu utabiri wa hali ya hewa.

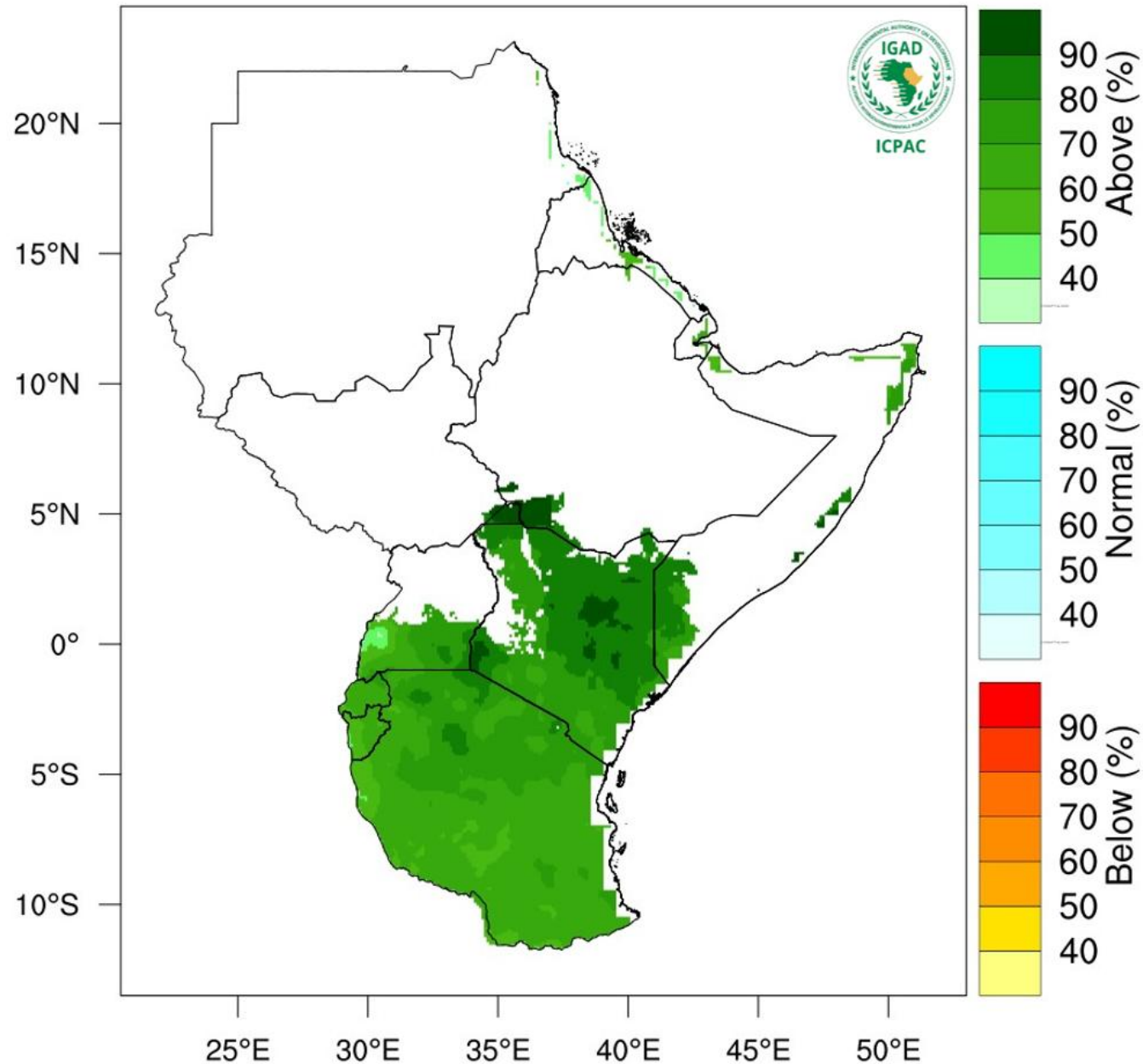
For further information, please contact:



Daniel M. Mbithi
County Director of Meteorological Services
Mobile: 0715255171
Email: mbithi_d@yahoo.com

You can find more information about the climate and weather in Kenya on the KMD website <http://www.meteo.go.ke/>

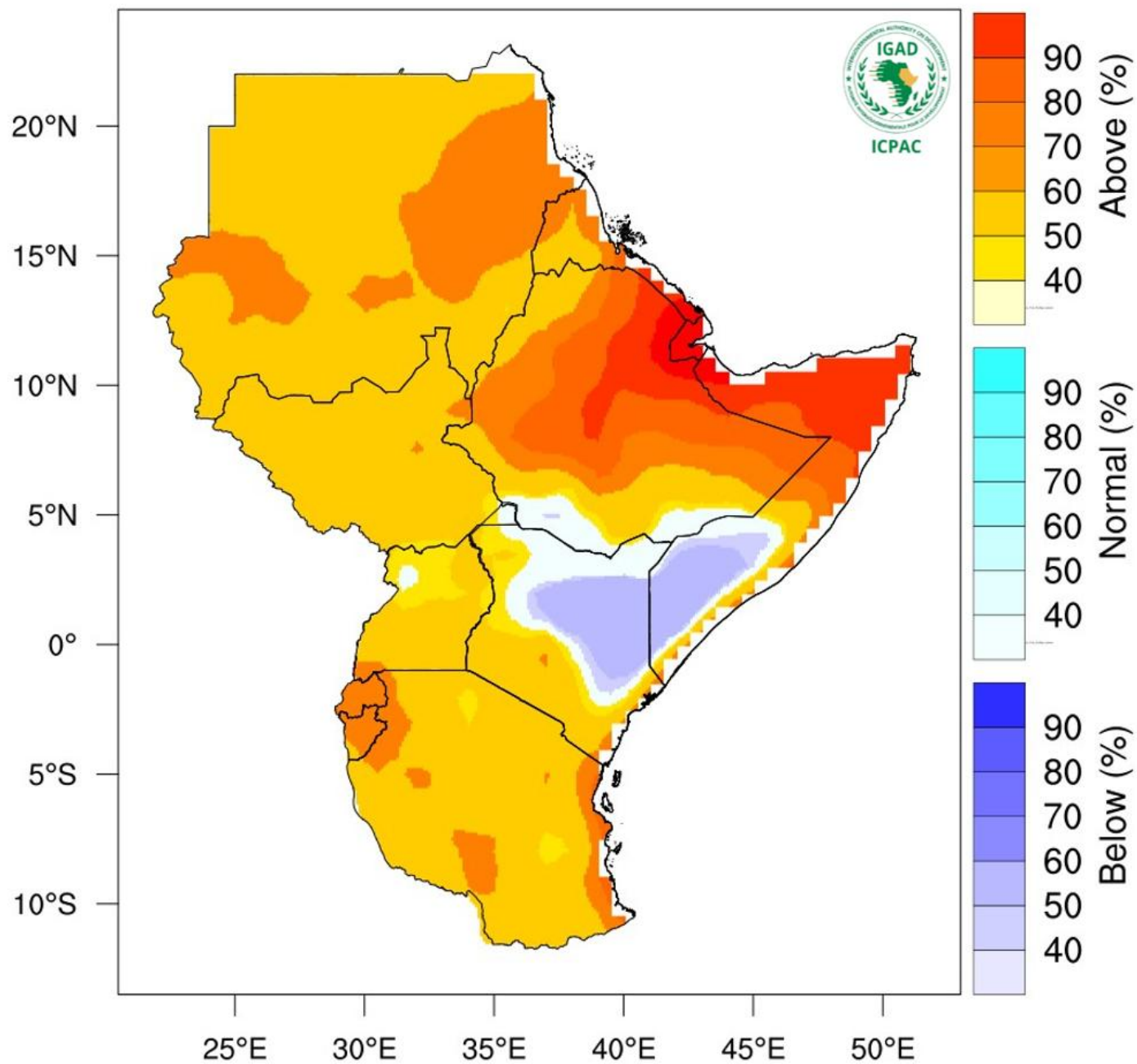
Rainfall Probabilistic Forecast for December 2023



NB: Wetter than usual conditions expected over most parts of the County.

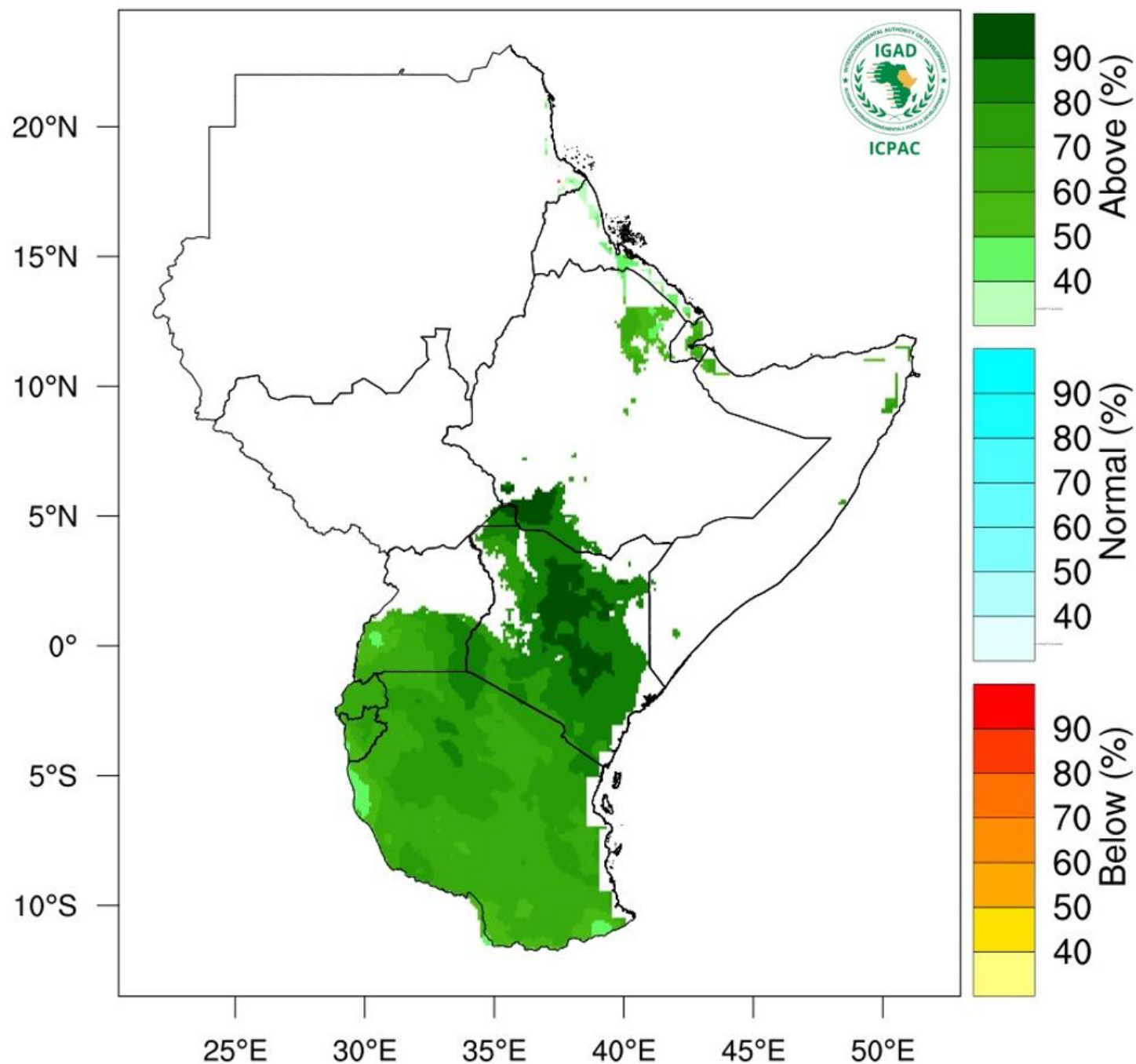
Annex II: Temperature forecast for the month of December 2023

Temperature Forecast for December 2023



NB: Warmer than usual conditions expected over most parts of the County.

Rainfall Forecast for Dec 2023-Feb 2024



NB: Wetter than usual conditions expected over most parts of the County between December 2023 and February 2024, .