



AICCRA
Accelerating Impacts of CGIAR
Climate Research for Africa



KENYA
METEOROLOGICAL
DEPARTMENT



INITIATIVE ON
Livestock and Climate

Republic of Kenya
 Ministry of Environment, Climate Change and Forestry
 Kenya Meteorological Department
 Office of the County Director of Meteorological
 Services, Kilifi
 Mob. +254 (0) 746 423989
 E-mail: cdmkilifi@meteo.go.ke; cdmkilifi@gmail.com

1	Climate Information	2
1.1	Review of previous season (OND 2023)	2
1.2	Weather Forecast for March-April-May (MAM) 2024 (Long Rains) Season.....	5
1.2.1	Highlights	5
1.2.2	Spatial distribution of March-April-May (MAM) seasonal rainfall	5
	5
2.0	Summary for MAM 2024 forecast by ward	6
2	General Recommendations	8
2.1	Crops.....	8
2.2	Livestock Sector	8
2.3	Water Sector	9
2.4	Environment Sector	9
2.5	Transport and Infrastructure	9
2.6	Health	9
i.	Mosquito control	9
ii.	Deworming	9
iii.	Prepare for outbreaks of vector- and -water-borne diseases.....	9
iv.	Observe personal hygiene and avoid open defecation.....	9
v.	Actors to sensitize communities of good health practices	9
vi.	People should acquire medical cover	9
vii.	Keep children and the elderly warm during rainy days and cold nights.....	9
2.7	Fisheries and marine	9
i.	Proper fishing gear	9
ii.	Watch out for ocean conditions' (rough seas) advisories from KMD	9
iii.	Promotion of aquaculture	9
iv.	Establish mangrove nurseries	9
3	Detailed advisories by wards	10
3.1	Specific agro-weather advisories for Magarini Sub-County	10
3.2	Specific agro-weather advisory for Kilifi South Sub-County	11
3.3	Specific agro-advisories for Kilifi North Sub-County.....	12
3.4	Specific agro-advisories for Kaloleni Sub-County.....	13
3.5	Specific agro-advisories for Malindi Sub-County	14
3.6	Specific agro-advisories for Ganze Sub-County	15
3.7	Specific agro-advisories for Rabai Sub-County	16

1 Climate Information

1.1 Review of previous season (OND 2023)

- Enhanced rainfall was observed in OND 2023 with good spatial distribution (Figure 1) and fair-to-good distribution in time.
- Rainfall onset was between 15th – 29th October 2023, and cessation between 26th December 2023 – 22nd January 2024
- Enhanced rainfall in OND 2023 resulted in flooding and loss of lives in some areas
- OND 2023 was generally a good season for crop production though some crops were impacted by excess rainfall and flooding.

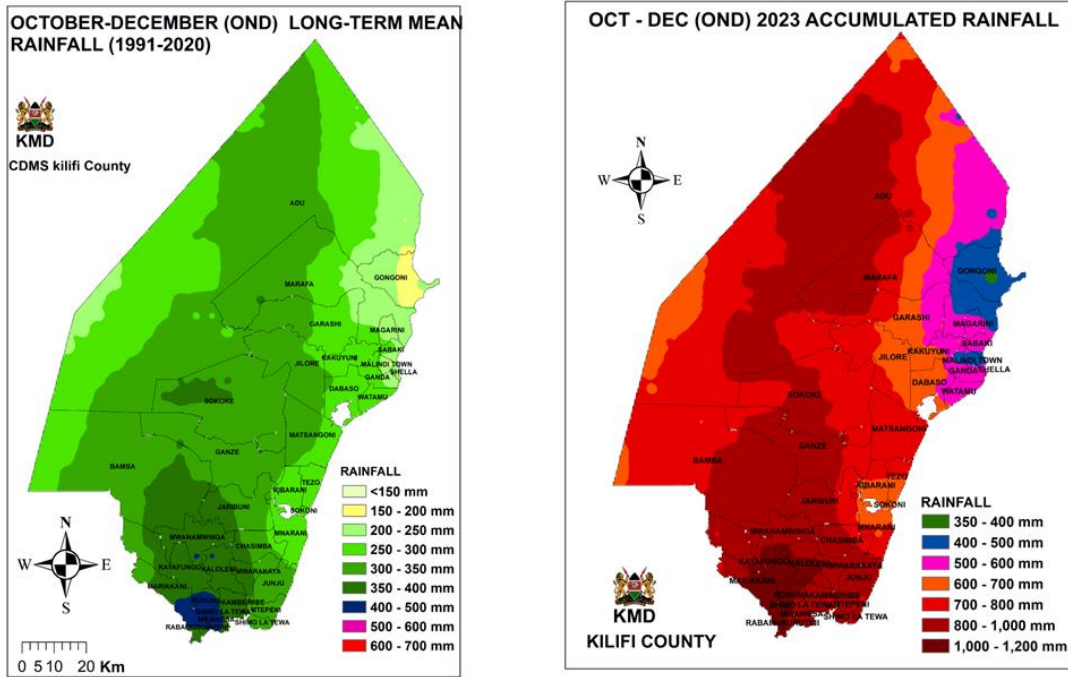


Figure 1. Long Term Mean OND rainfall (to the left); and observed OND 2023 rainfall totals (to the right).

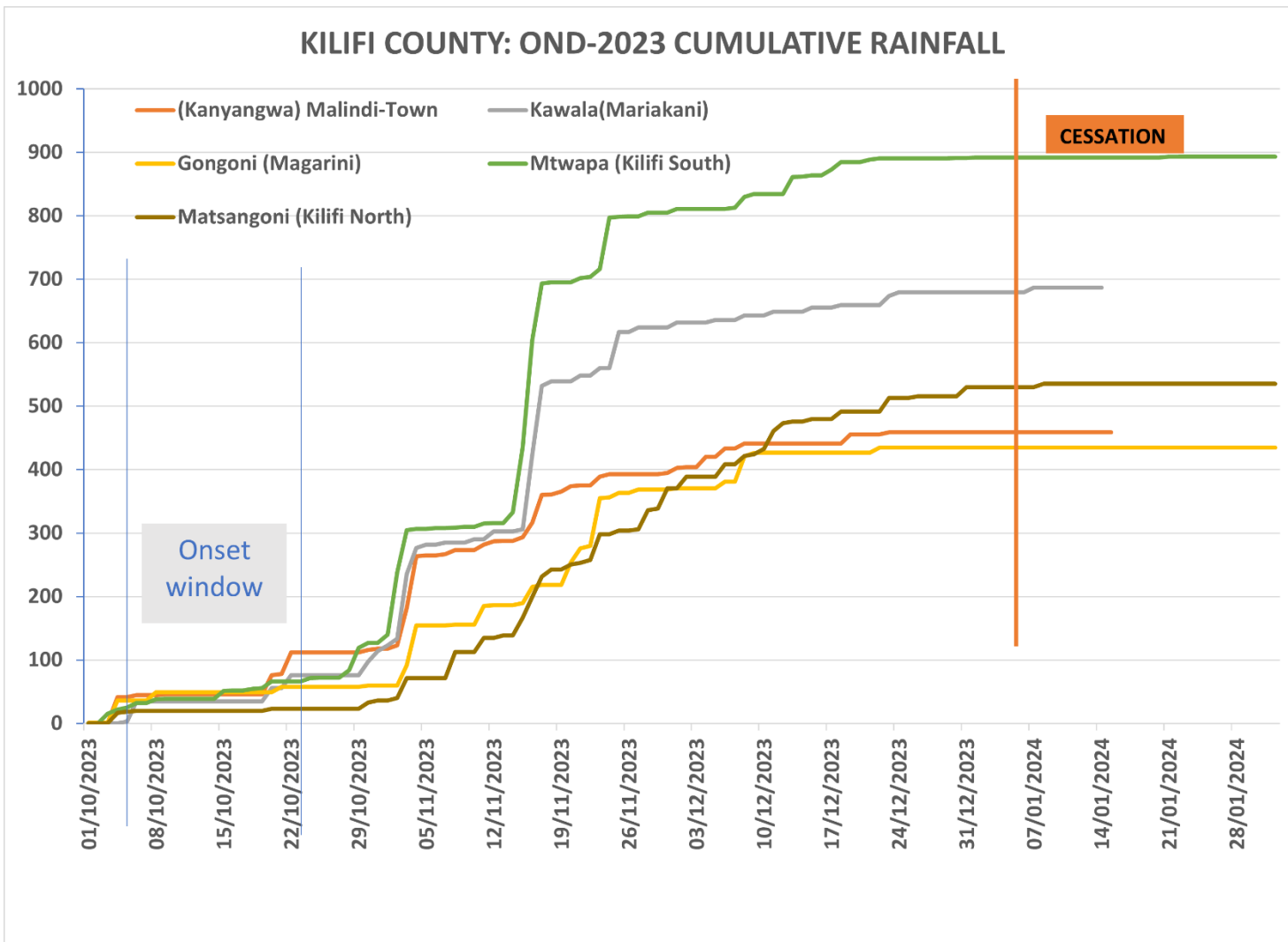


Figure 2. OND 2023 rainfall cumulative curve for wards (sub counties) also indicating the onset and cessation windows,

Table 1. Weekly rainfall totals by ward as a further indicator of the temporal distribution of rainfall

WEEK	Date	KILIFI SOUTH				KALOLENI		MALINDI			KILIFI NORTH	MAGARINI	
		Dzitsoni	Mtepeni	Mtwapa	Mwarakaya	Kawala	Mwanamwinga	Kanyangwa	Malindi Airport	Msabaha	Matsangoni	Bomani	Gongoni
1	26 Sep-2 Oct 2023	10.8	12.09	19.4	11	0	22.2	19	18.9	0	17.8	8.5	8.6
2	3-9 Oct 2023	24.8	34.19	38.6	16	35	25.7	45.9	55.7	45.7	19.6	91.9	48.7
3	10-16 Oct 2023	1.55	0	13.3	3.6	0	0	0	0	0	0	0	0
4	17-23 Oct 2023	4.5	7.1	14.4	18.4	41	35	66.3	22.1	14.7	3.2	6.5	8.1
5	24-30 Oct 2023	21	35.94	60.5	34.8	21.3	14.1	3.4	2.6	3.1	10.2	5.6	2
6	31 Oct-6 Nov 2023	175.8	193.73	180.8	122.2	184.6	135.4	149.2	167.7	193.4	38.1	104.6	95.1
7	7 -13 Nov 2023	18.5	35.06	7.9	11.6	20.8	64.6	22.7	16.2	32.8	67.7	12.2	32
8	14-20 Nov 2023	195.7	329.55	379.6	154.6	236.6	188.3	86.1	79	129.3	111.3	93.66	67.2
9	21-27 Nov 2023	180.2	96.3	104	170.4	84.5	89.6	19.5	28.8	46.4	56.1	14.3	114.7
10	28 Nov-4 Dec 2023	13.4	27.2	11.5	0	7.9	0	27	27.1	75.4	82.4	68.1	2.3
11	5-11 Dec 2023	29.9	29.5	23.5	5.2	17.4	30.7	21.1	13.4	14.5	72.3	12.8	55.9
12	12-18 Dec 2023	21	19.6	50.4	15.2	10.3	41.8	0	0	1.6	30.3	2.6	0
13	19-25 Dec 2023	31.8	49.05	5.8	16.6	20	28.2	17.7	4.4	15.8	21.7	24.5	7.7
14	26 Dec 2023-1 Jan 2024	9.5	0	1.4	3.2	0	0	0	0	0.6	16.8	0	0
15	2-8 Jan 2024	0	0	0.3	0	7.5	5.7	0	0	0	5.6	0	0
16	9-15 Jan 2024	5.5	4.3	0	1.2	0	3	0	1.5	0	0	0	0
17	16-22 Jan 2024	9.6	0	1.4	1	0	0	0	0	0	0	0	0
18	23-29 Jan 2024	0	0	0	0	0	0	0	0	0	0	0.3	0
19	30 Jan-5 Feb 2024	0	0	0	0	0	0	0	0	0	0	0	0
20	6 Feb-12 Feb 2024	0	0	0	0	0	0	0	0	0	0	0	0
TOTAL	1 Oct-31 Dec 2023	727.65	857.22	891.7	571.8	679.4	653.4	458.9	417	573.3	529.7	436.76	433.7
TOTAL	OND 2023 (1 Oct-cessation date)	753.55	873.61	912.8	585	686.9	684.3	477.9	437.4	573.3	553.1	445.56	442.3

1.2 Weather Forecast for March-April-May (MAM) 2024 (Long Rains) Season

1.2.1 Highlights

The March-April-May rainfall season constitutes the main season along the coastal strip in which more than 300 mm of rainfall is normally received as opposed to the hinterland (**Error! Reference source not found.**).

In MAM 2024, Kilifi County is expected to receive rainfall that is likely to be Near-Average (NN) with a tendency to Above-Normal (AN) rainfall in parts of *Dabaso, Watamu, Ganda, Kambe/Ribe, Mtepeni, Shimo La Tewa wards*; (**Error! Reference source not found.**). Occasional storms, and dry spells (long dry days within the season) are likely during the season.

Regions in the coastal strip are expected to have generally fair to good distribution of rainfall in both time and space. Poor distribution is expected towards the hinterland.

The temperature forecast indicates increased probability (70% chance) of warmer than normal temperatures in the whole of Kilifi County.

Onset is expected between 25th March – 6th April 2024, and the rains are expected to continue into June 2024 (cessation between 10th – 22nd June 2023).

The probability of getting more than 300 mm of rainfall during MAM 2024 season is higher in the coastal strip and reduces towards the hinterland (Figure 4).

Rough seas may be experienced during the season, seafarers should make use of the weekly forecast issued by the Kenya Meteorological Department

1.2.2 Spatial distribution of March-April-May (MAM) seasonal rainfall

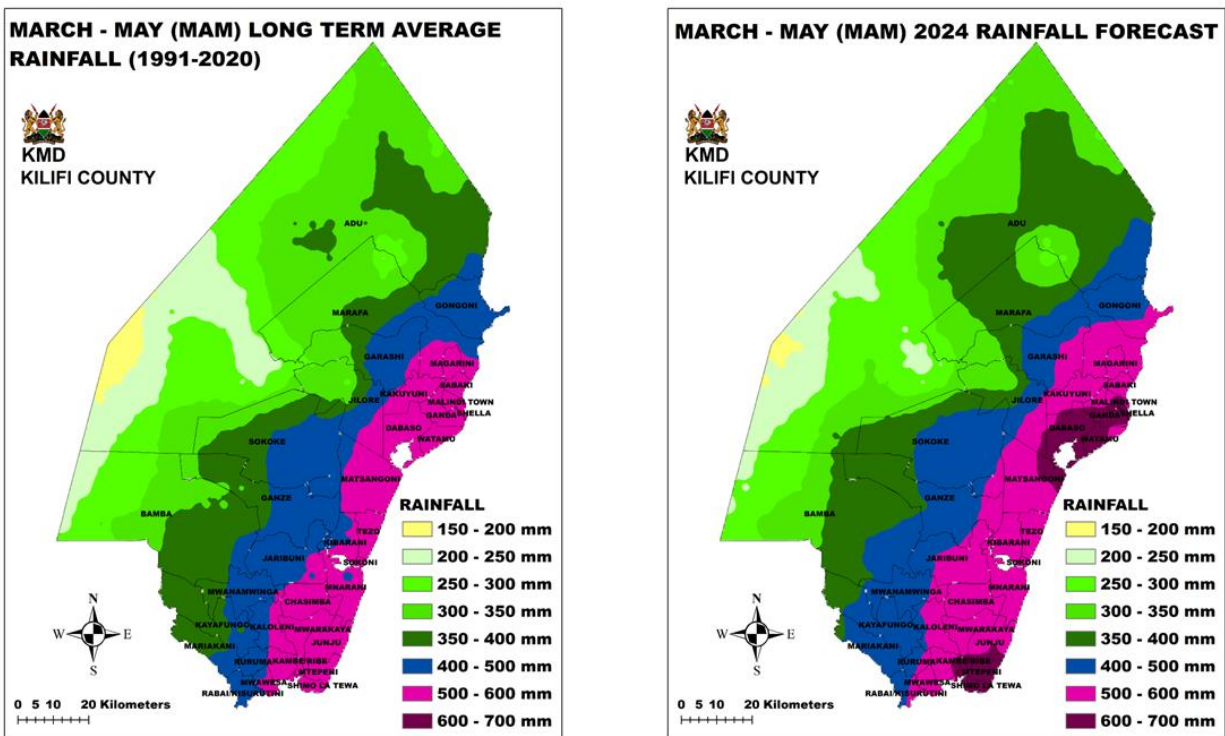


Figure 3. Compares the Long-Term Average (1991-2020) MAM rainfall to the MAM 2024 total rainfall forecast

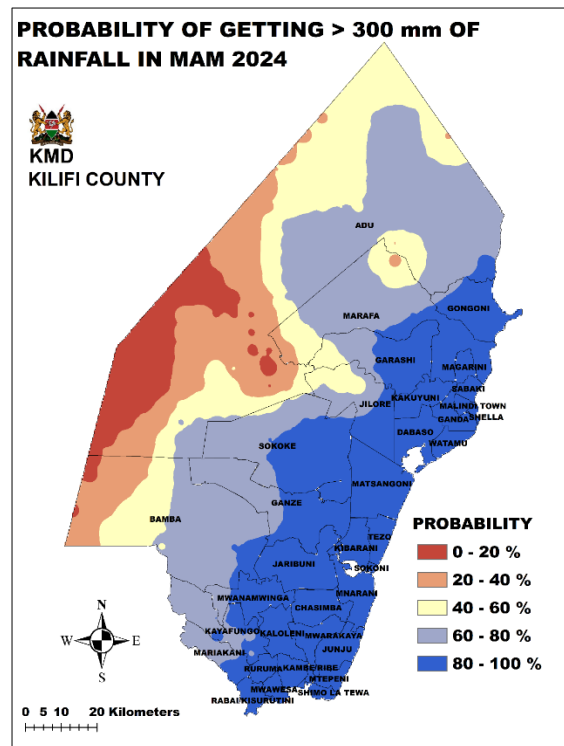


Figure 4. Probability of getting more than 300 mm of rainfall during MAM 2024 rainfall season in Kilifi.

2.0 Summary for MAM 2024 forecast by ward

Sub-County	Ward	Probable Amount range in mm	Probable onset dates	Probable Cessation dates	LRP in days	Probable distribution
Magaraini	Marafa (Dakacha)	280 – 320 mm	Between 25 th – 6 th April 2024		70-90 days	<p>long dry spells within the rain season that could affect vulnerable crops</p> <p>Fair to good distribution along the coastal strip.</p> <p>Poor distribution towards the hinterland.</p>
	Marafa (Mambroi, Madina)	350 – 460 mm				
	Magaraini	400 – 500 mm				
	Gongoni	400 – 500 mm				
	Adu (Makongeni)	200 – 300 mm				
	Adu (Kisiki)	190 – 250 mm				
	Adu (Matolani)	280 – 350 mm				
	Adu (Kamale, \Adu, Ramada, Merereni, Kadzandani)	340 – 420 mm				

	Garashi (Baricho, Gandini)	300 – 390 mm				
	Garashi (rest of Garashi)	400 – 500 mm				
	Sabaki	500 – 570 mm				
Malindi	Jilore (Mkondani, Makobeni, Lango baya)	300 – 380 mm				
	Jilore (Kakoneni, Jilore, Girimacha)	350 – 500 mm				
	Kakuyuni	500 – 550 mm				
	Ganda	500 - 580 mm				
	Malindi Town	500 – 600 mm				
Kilifi South	Junju	500 – 600 mm				
	Mwarakaya	500 – 600 mm				
	Chasimba	500 – 550 mm				
	Mtepeni	500 – 600 mm				
	Shimo La Tewa	500 – 630 mm				
Kilifi North	Matsangoni	450 – 600 mm				
	Watamu	500 – 600 mm				
	Mnarani	500 – 570 mm				
	Tezo	500 – 590 mm				
	Kibarani	500 – 590 mm				
	Sokoni	500 – 590 mm				
Kaloleni	Mariakani	390 – 440 mm				
	Kayafungo	380 – 450 mm				
	Kaloleni	450 – 590 mm				
	Mwanamwanga [Tsangatsini, Viragoni, Kibwabwani, Kitangwini (West)]	390 – 450 mm				
	Mwanamwanga (East)	450 – 530 mm				
Ganze	Soko (Digiria, Milore, Dugumunane, upper-Mwahera)	340 – 400 mm				
	Soko (rest of Soko)	400 – 480 mm				

	Ganze (Mwambani, Mirihini)	350 – 390 mm				
	Ganze (rest of Ganze)	400 – 490 mm				
	Jaribuni	440 – 530 mm				
	Bamba (Western Gede)	230 – 300 mm				
	Bamba (Eastern Gede)	300 – 350 mm				
	Bamba (Rest of Bamba)	350 – 440 mm				
Rabai	Rabai	450 – 520 mm				
	Kambe/Ribe	530 – 620 mm				
	Ruruma	450 – 500 mm				
	Mwawesa	400 – 550 mm				

2 General Recommendations

2.1 Crops

- i. Farmers planting maize to use organic manures & adopt cover cropping with legumes
- ii. Plant tree crops, and agroforestry trees
- iii. adopt appropriate water harvesting technologies
- iv. apply integrated pest management
- v. Choosing appropriate crop varieties based on their rainfall requirements
- vi. At the moment we cannot reasonably predict the actual length of the dry spells and their impacts on various crops.
 - We therefore advise farmers to choose crops that are least vulnerable to such long dry spells
- vii. Length of the rainy period (LRP):
 - Choose crops whose length of growing period to maturity is not too far from the LRP.
- viii. Onset dates versus planting dates:
 - For those wishing to dry plant, it is advisable to plant in the 1st week of the forecasted onset dates **based on the soil types**
 - For those wishing to wet plant, it is advisable to wait for the weekly weather update which is more accurate.
- ix. Farmers in sloppy areas to undertake soils and water conservation measures such as terraces and their repair, trash lines
- x. Weeding on tree crops
- xi. Timely acquisition of farm inputs
- xii. Adopt good agricultural practices

2.2 Livestock Sector

- i. Farmers encouraged to plant fodder such as *Napier Grass*, *Bracharia*, *Desmodium*

- ii. routine deworming and vaccination for livestock
- iii. Hay and Silage making
- iv. Establish livestock shade to protect against heavy rainfall and diseases

2.3 Water Sector

- i. Desilt water pans, water ponds, and repair spillways
- ii. Water harvesting e.g. *farm ponds, water pans, roadside water harvesting, roof catchment*
- iii. Water treatment to avoid water-borne diseases

2.4 Environment Sector

- i. Plant appropriate tree species
- ii. Practice soil and water conservation
- iii. Safe and effective use of pesticide
- iv. Embrace organic farming
- v. Discourage logging
- vi. Marine ecosystems conservation

2.5 Transport and Infrastructure

- i. Unclogging of blocked drainages
- ii. Flash floods and damage to infrastructure
- iii. Spot improvement of road infrastructure
- iv. Road users to watch-out for road visibility
- v. Drivers should not drive through stagnant water or water over bridges
- vi. Watch out for slippery roads

2.6 Health

- i. Mosquito control
- ii. Deworming
- iii. Prepare for outbreaks of vector- and -water-borne diseases
- iv. Observe personal hygiene and avoid open defecation
- v. Actors to sensitize communities of good health practices
- vi. People should acquire medical cover
- vii. Keep children and the elderly warm during rainy days and cold nights

2.7 Fisheries and marine

- i. Proper fishing gear
- ii. Watch out for ocean conditions' (rough seas) advisories from KMD
- iii. Promotion of aquaculture
- iv. Establish mangrove nurseries

3 Detailed advisories by wards

3.1 Specific agro-weather advisories for Magarini Sub-County

	Crops to plant	Ward (Probable MAM 2024 amount) Adu (Makongeni); 200 - 300 mm Adu (Kisiki); 190 - 250 mm	Ward (Probable MAM 2024 amount) Marafa (Dakacha); 280 - 320 mm Adu (Matolani); 280 - 350 mm Garashi (Baricho, Gandini); 300 - 390 mm	Ward (Probable MAM 2024 amount) Marafa (Mambui, Madina); 350-460 mm	Ward (Probable MAM 2024 amount) Magarini (400-500mm) Adu (Kamale, Ramada, Merereni, Kadzandini); 340 - 420 mm Garashi (rest of Garashi); 400 - 500 mm Sabaki;500 - 570 mm
1	Maize	DHO2, Duma 43	PH1, DH02, DH04, DK8031/DK8033, Aminika,Tsavo, Duma 43	PH1, DH02, DH04, DK8031/DK8033, Aminika,Tsavo, Duma 43, PH4, Advanta, Coast composite	PH1, DH02, DH04, DK8031/DK8033, DK777, Aminika,Tsavo, Duma 43, PH4, Advanta
2	Cowpeas	Kendkunde, M66, cowpeas (white), K80	Same varieties	Same varieties	Same varieties
3	Greengrams	KS20, N26	Same varieties	Same varieties	Same varieties
4	Simsim	white, brown, black	Same varieties	Same varieties	Same varieties
5	Sunflower	Kenya Shaba H-008, Kenya Fedha H-894, Re kard, Kensun22	Same varieties	Same varieties	Same varieties
6	Groundnut	pinto (red)	Same varieties	Same varieties	Same varieties
7	Cassava	Tajirika, Kareso, Shibe, Nzalauka, Karembo	Same varieties	Same varieties	Same varieties
8	Pumpkin	Elgon Cream, Cushaw green striped	Same varieties	Same varieties	Same varieties
9	Sweet potatoes	Kipenda roho (orange fleshed), Mtwapa-8	Same varieties	Same varieties	Same varieties
13	Passion	yellow	Same varieties	Same varieties	Same varieties
14	Amaranthus	Dubious	Same varieties	Same varieties	Same varieties
15	African Black nightshade		Same varieties	Same varieties	Same varieties
16	Pawpaw	Hawaii, Malkia F1, Solo F1, sunrise F1, mountain F1	Same varieties	Same varieties	Same varieties
18	Okra	Pusa sawani, Naiya F1, Ridhika F1	Same varieties	Same varieties	Same varieties

19	Tomatoes	Nyati F1, ranger F1	Same varieties	Same varieties	Same varieties
20	Pineapple	—	Smooth Cayene (Marafa-Dakacha only)	—	—
21	Mango seedlings	—	Ngoe, Apple, Tommy	Same varieties	Same varieties
22	Cashewnut seedlings	—	Poly clony	Same varieties	Same varieties
23	Coconut seedlings	—	East Africa tall, Dwarf	Same varieties	Same varieties
24	Banana	—	—	—	Dessert, Plantain (except Adu)
25	Onions	—	—	—	Red creole, white creole (except Adu)
26	Cabbage	—	—	—	Gloria (Except Adu)
27	Spinach	—	—	—	Swiss Chord (Except Adu)
28	Citrus family	—	—	—	Lemon, Oranges (Except Adu)
29	Sorghum	Gaddam, Serena	Same varieties	Same varieties	Same varieties
30	Millet	Finger Millet	Same varieties	Same varieties	Same varieties

3.2 Specific agro-weather advisory for Kilifi South Sub-County

	Crops to plant	Ward (Probable MAM 2024 amount) Junju; 500 - 600 mm Mwarakaya; 500 - 600 mm Chasimba; 500 - 550 mm Mtepeni; 500 - 600 mm Shimo La Tewa; 500 - 630 mm
1	Maize	PH4, DH04, DK777, DK8083, DK8031, TSAVO, Aminika, Duma 43, Advanta
2	Sorghum	Serena
3	Millet	Finger Millet
4	Rice	Upland Rice
5	Cowpeas	Kendkunde, K80
6	Greengrams	KS20, N26
7	Simsim	Black
8	Sunflower	Kenya Fedha H-894
9	Cassava	Tajirika, Kareso, Shibe, Nzalauka, Karembo
10	Pumpkin	Elgon Cream, Cushaw green striped
11	Sweet potatoes	Kipenda roho (orange fleshed), Mtwapa-8

12	Amaranthus	Dubious
13	Brinjals	Long purple
14	African Black nightshade	
15	Okra	Pusa sawani, Naiya F1, Ridhika F1
16	Tomatoes	Nyati F1, ranger F1
17	Spider plant	indigeneous variety
18	Capsicum	Yolo wonder
19	Pepper	Sweet Cayenne, ABEC

3.3 Specific agro-advisories for Kilifi North Sub-County

	Crops to plant	Ward (Probable MAM 2024 amount) Matsangoni; 450 - 600 mm Watamu; 500 - 600 mm Mnarani; 500 - 570 mm Tezo, kibarani, Sokoni, Dabaso; 500 - 590 mm
1	Maize	PH1, PH4, DH04, DK777, DK8083, DK8031, TSAVO, Aminika, Duma 43, Advanta
2	Sorghum	Serena
3	Millet	Finger Millet
4	Rice	Upland Rice
5	Cowpeas	Kendkunde, K80
6	Greengrams	KS20, N26
7	Simsim	Black
8	Sunflower	Kenya Fedha H-894
9	Cassava	Tajirika, Kareso, Shibe, Nzalauka, Karembo
10	Pumpkin	Elgon Cream, Cushaw green striped
11	Sweet potatoes	Kipenda roho (orange fleshed), Mtwapa-8
12	Amaranthus	Dubious
13	Brinjals	Long purple
14	African Black nightshade	
15	Okra	Pusa sawani, Naiya F1, Ridhika F1
16	Tomatoes	Nyati F1, ranger F1
17	Spider plant	indigeneous variety

18	Capsicum	Yolo wonder
19	Pepper	Sweet Cayenne, ABEC

3.4 Specific agro-advisories for Kaloleni Sub-County

	Crops to plant	Ward (Probable MAM 2024 amount) Mariakani; 390 - 440 mm Kayafungo; 380 - 450 mm Mwanamwinga (Tsangatsini, Viragoni, Kibwabwani, Kitangwini); 390 - 450 mm	Ward (Probable MAM 2024 amount) Kaloleni; 450 - 590 mm Mwanamwinga (East); 450 - 530 mm
1	Maize	PH1, PH4, DH04, DH02, DK777, DK8083, DK8031, TSAVO	Same varieties
2	Cowpeas	Kendkunde & local varieties	Same varieties
3	Greengrams	KS20, N26	Same varieties
4	Simsim	Black	Same varieties
5	Sunflower	Kenya Fedha H-894	Same varieties
6	Cassava	Tajirika, Siri, Karibuni Kareso, Shibe, Nzalauka, Karembo	Same varieties
7	Pigeon Peas		Same varieties
8	Pumpkin	Elgon Cream, Cushaw green striped	Same varieties
9	Sweet potatoes	Kipenda roho (orange fleshed), Mtwapa-8	Same varieties
10	Amaranthus	Dubious	Same varieties
11	Brinjals	Long purple	Same varieties
12	Mchicha		Same varieties
13	African Black nightshade		Same varieties
14	Okra	Pusa sawani, Naiya F1, Ridhika F1	Same varieties
15	Tomatoes	Nyati F1, ranger F1	Same varieties
16	Spider plant	indigeneous variety	Same varieties
17	Capsicum	Yolo wonder	Same varieties
18	Pepper	Sweet Cayenne, ABEC	Same varieties
19	Bananas	Desert, plantain	Same varieties
20	Pawpaws	Hawaii, Malkia F1, Solo F1, sunrise F1, mountain F1	Same varieties
21	Passion	Yellow	Same varieties
22	Sugarcane		Same varieties
23	Establish patures & fodder		Same varieties
24	Mango seedlings	Ngoe, Apple, Tommy	Same varieties
25	Cashewnut seedlings	Poly clony	Same varieties

26	Coconut seedlings	East Africa tall, Dwarf	Same varieties
27	Avocado	—	Avocado
28	Rice	—	Upland rice

3.5 Specific agro-advisories for Malindi Sub-County

	Crops to plant	Ward (Probable MAM 2024 amount) Jilore (Mkondani, Makobeni, Lango baya); 300 - 380 mm	Ward (Probable MAM 2024 amount) Jilore (Kakoneni, Jilore, Girimacha); 350 - 500 mm	Ward (Probable MAM 2024 amount) Kakuyuni; 500 - 560 mm Ganda; 500 - 580 mm Malindi Town; 500 - 600 mm
1	Maize	PH1, DH02, DH04, DK8031/DK8033, Aminika, Tsavo, Duma 43	PH1, DH02, DH04, DK8031/DK8033, Aminika, Tsavo, Duma 43, PH4, Advanta, Coast composite	PH1, DH02, DH04, DK8031/DK8033, DK777, Aminika, Tsavo, Duma 43, Advanta
2	Cowpeas	Kendkunde, M66, cowpeas (white), K80	Same varieties	Same varieties
3	Greengrams	KS20, N26	Same varieties	Same varieties
4	Simsim	white, brown, black	Same varieties	Same varieties
5	Sunflower	Kenya Shaba H-008, Kenya Fedha H-894, Rekard, Kensun22	Same varieties	Same varieties
6	Groundnut	pinto (red)	Same varieties	Same varieties
7	Cassava	Tajirika, Kareso, Shibe, Nzalauka, Karembo	Same varieties	Same varieties
8	Pumpkin	Elgon Cream, Cushaw green striped	Same varieties	Same varieties
9	Sweet potatoes	Kipenda roho (orange fleshed), Mtwapa-8	Same varieties	Same varieties
1 3	Passion	yellow	Same varieties	Same varieties
1 4	Amaranthus	Dubious	Same varieties	Same varieties
1 5	African Black nightshade		Same varieties	Same varieties
1 6	Pawpaw	Hawaii, Malkia F1, Solo F1, sunrise F1, mountain F1	Same varieties	Same varieties
1 8	Okra	Pusa sawani, Naiya F1, Ridhika F1	Same varieties	Same varieties
1	Tomatoes	Nyati F1, ranger F1	Same varieties	Same varieties

9				
2 1	Mango seedlings	Ngoe, Apple, Tommy	Same varieties	Same varieties
2 2	Cashewnut seedlings	Poly clony	Same varieties	Same varieties
2 3	Coconut seedlings	East Africa tall, Dwarf	Same varieties	Same varieties
2 4	Banana	—	—	Desert, plantain
2 5	Onions	—	—	Red creole, white creole
2 6	Cabbage	—	—	Gloria
2 7	Spinach	—	—	Swiss chord
2 8	Citrus family	—	—	Lemon, Oranges
2 9	Fodder	—	—	Napier grass

3.6 Specific agro-advisories for Ganze Sub-County

	Crops to plant	Ward (Probable MAM 2024 amount) Bamba (Western Gede); 230 - 300 mm	Ward (Probable MAM 2024 amount) Bamba (Eastern Gede); 300 - 350 mm	Ward (Probable MAM 2024 amount) Bamba (rest of Bamba); 350 - 440 mm Ganze (Mwambani, Mirihini); 350 - 390 mm Sokoke (Digiria, Milore, Dugumunane, upper-Mwahers); 340 - 400 mm	Ward (Probable MAM 2024 amount) Sokoke (rest of Sokoke); 400 - 480 mm Ganze (rest of Ganze); 400 - 490 mm Jaribuni; 440 - 530 mm
1	Maize	DH02, Duma, 43	PH1, DH02, DH04, DK8031/DK8033, Aminika, Tsavo, Duma 43	PH1, DH02, DH04, DK8031/DK8033, Aminika, Tsavo, Duma 43, PH4, Advanta	PH1, DH02, DH04, DK8031/DK8033, Aminika, Tsavo, Duma 43, Advanta
2	Sorghum	Gaddam, Serena	Same varieties	—	—
3	Millet	Finger Millet	Same varieties	—	—
5	Cowpeas	Kenkunde, M66, cowpeas (white), K80	Same varieties	Same varieties	Same varieties
6	Greengrams	KS20, N26	Same varieties	Same varieties	Same varieties

7	Simsim	white, Black, brown	Same varieties	Same varieties	Same varieties
9	Cassava	Tajirika, Kareso, Shibe, Nzalauka, Karembo	Same varieties	Same varieties	Same varieties
10	Sunflower	—	Kenya Shaba H-008, Kenya Fedha H-894, Rekard, Kensun 22	Same varieties	Same varieties
11	Groundnuts	—	pinto (red)	Same varieties	Same varieties
12	Pumpkin	—	Elgon Cream, Cushaw green striped	Same varieties	Same varieties
13	Sweet potatoes	—	Kipenda roho (Orange fleshed), Mtwapa 8	Same varieties	Same varieties
14	Passion	—	Yellow	Same varieties	Same varieties
15	Amaranthus	—	Dubious	Same varieties	Same varieties
16	African Black night shade	—		Same varieties	Same varieties
17	Pawpaw	—	Hawaii, Malkia F1, Solo F1, sunrise F1, mountain F1	Same varieties	Same varieties
18	Okra	—	Pusa sawani, Naiya F1, Ridhika F1	—	Same varieties
19	Tomatoes	—	Nyati F1, Ranger F1	—	Same varieties
20	Mango seedlings	—	Ngoe, Apple, Tommy	Same varieties	Same varieties
21	Cashewnut seedlings	—	Poly clony	Same varieties	Same varieties
22	Coconut seedlings	—	—	East Africa tall, dwarf	Same varieties
23	Banana	—	—	—	dessert, plantain

3.7 Specific agro-advisories for Rabai Sub-County

	Crops to plant	Ward (Probable MAM 2024 amount) Rabai; 450 -520 mm Kambe/Ribe; 530 - 620 mm Ruruma; 450 - 500 mm Mwawesa; 400 - 550 mm
1	Maize	PH1, PH4, DH04, DH02, DK777, DK8083, TSAVO
2	Cowpeas	Kendkunde & local varieties
3	Greengrams	KS20, N26
5	Sunflower	Kenya Fedha H-894
6	Cassava	Tajirika, Siri, Karibuni Kareso, Shibe, Nzalauka, Karembo (all varieties)
7	Pigeon Peas	
8	Pumpkin	Elgon Cream, Cushaw green striped
9	Sweet potatoes	Kipenda roho (orange fleshed), Mtwapa-8
11	Brinjals	Long purple
12	Mchicha	
13	African Black nightshade	
14	Okra	Pusa sawani, Naiya F1, Ridhika F1
16	Spider plant	indigeneous variety
18	Pepper	Sweet Cayenne, ABEC
19	Bananas	Desert, plantain
20	Pawpaws	Hawaii, Malkia F1, Solo F1, sunrise F1, mountain F1
21	Passion	Yellow
22	Sugarcane	Sugarcane
23	Establish patures & fodder	
24	Mango seedlings	Ngoe, Apple, Tommy
25	Cashewnut seedlings	Poly clony
26	Coconut seedlings	East Africa tall, Dwarf
27	Avocado	Avocado
28	Rice	Upland rice

NOTE:

Avoid sheltering under trees during thunderstorms

This outlook should be used together with the 24-hr, 5-day, 7-day, monthly, special forecasts issued by the Kenya Meteorological Department, as well as weekly and monthly County forecasts developed and availed by the County Meteorological Offices and available at <https://meteo.go.ke/node/4191>.



Dr. Geoffrey Ogutu
County Director of Meteorological Services, Mombasa & Kilifi Counties