

## 1 HIGHLIGHTS

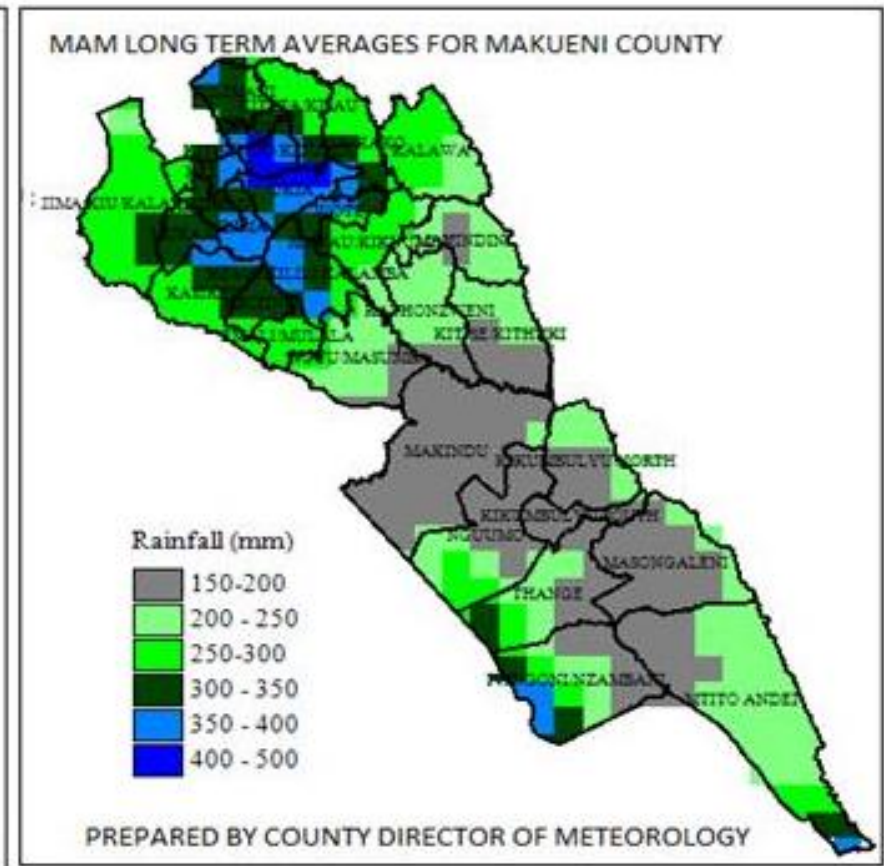
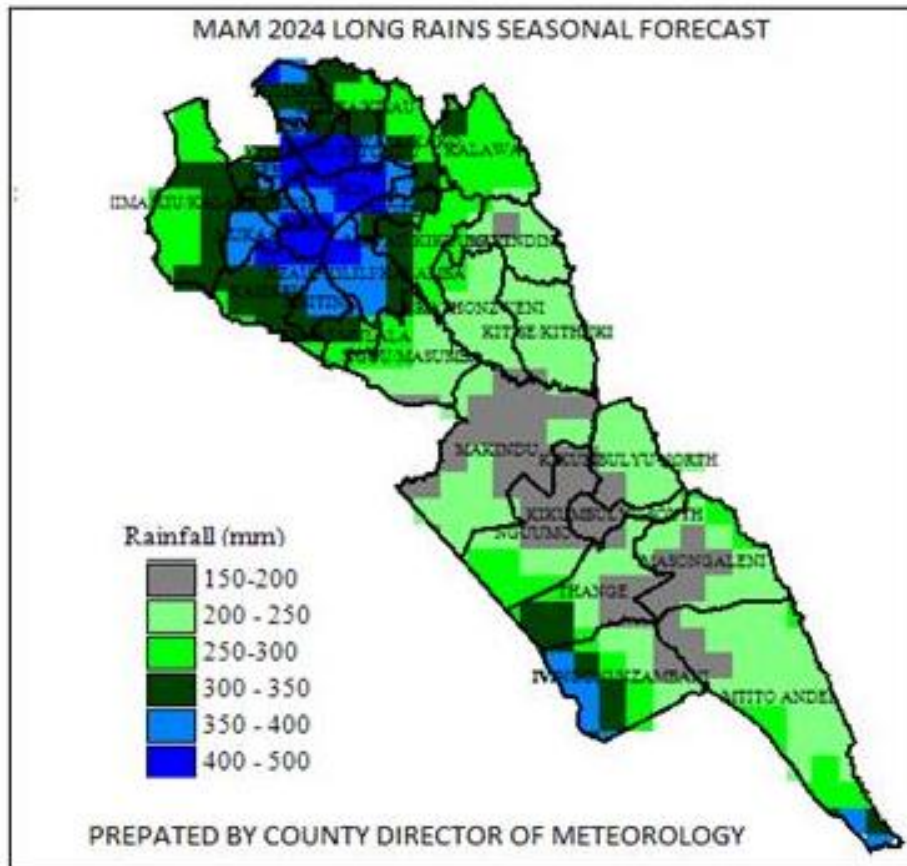
The MAM 2024 Long Rains Season is forecasted to be Near Normal (N) for most wards in Makueni County.

Rainfall onset for the Season is expected between **18<sup>th</sup> and 21<sup>st</sup> March 2024** and cessation between **8<sup>th</sup> and 21<sup>st</sup> May 2024**. Distribution both in time and space during the MAM 2024 Long Rains Season is predicted to be **fair to good** in most wards within Makueni County.

Occasional heavy rainfall storms are expected as the season progresses. The storms could lead to **Flash floods** especially along the seasonal river basins such as Athi, Thwake, Kaiti. Possible mudslides and rock falls could also occur on the hilly/sloppy areas of Mbooni and Kaiti sub counties.

Dry spells are however likely to occur within the season.

## 2 Spatial Map of Probable Total Seasonal Rainfall Versus normal (LTM)



### 3 MAM 2024 Seasonal Forecasts by Ward/AEZ

SN O	Sub county	Ward/ climatic zone	Seasonal Amount in mm		Probable onset dates	Probable Cessation dates
			Normal (Long term mean 1991-2020)	Forecast for MAM 2024		
1	Makueni	Kitise / Kithuki	200-250	200-250	Between 18 – 31 March 2024	Between 8–21 May 2024
2		Kathonzweni	200-250	200-250		
3		Mavindini	200-250	200-250		
4		Nzaui / Kalamba	350-400	350-400		
5		Muvau / Kikumini	250-300	250-300		
6		Wote	300-350	300-350		
7		Mbitini	350-400	350-400		
8	Kibwezi East	Masongaleni	150-200	200-250		
9		Nzambani / Ivingoni	200-250	200-250		
10		MtitoAndei	200-250	200-250		
11		Thange	200-250	200-250		
12	Kibwezi West	Makindu	150-200	200-250		
13		Mulala / Emali	250-300	250-300		
14		Nguu / Masumba	200-250	200-250		
15		Nguumo	200-250	200-250		
16		Kikumbulyu North	200-250	200-250		
17		Kikumbulyu South	150-200	150-200		
18	Kilome	Kasikeu	250-300	300-350		
19		Kiima/Kiu	250-300	300-350		
20		Mukaa	350-400	400-500		
21	Mbooni	Tulimani	300-350	350-400		
22		Mbooni	350-400	400-500		
23		Kako/Waia	250-300	250-300		
24		Kalawa	250-300	250-300		
25		Kisau/Kiteta	250-300	350-400		
26		Kithungo/Kitundu	350-400	400-500		

### 4 Recommendations

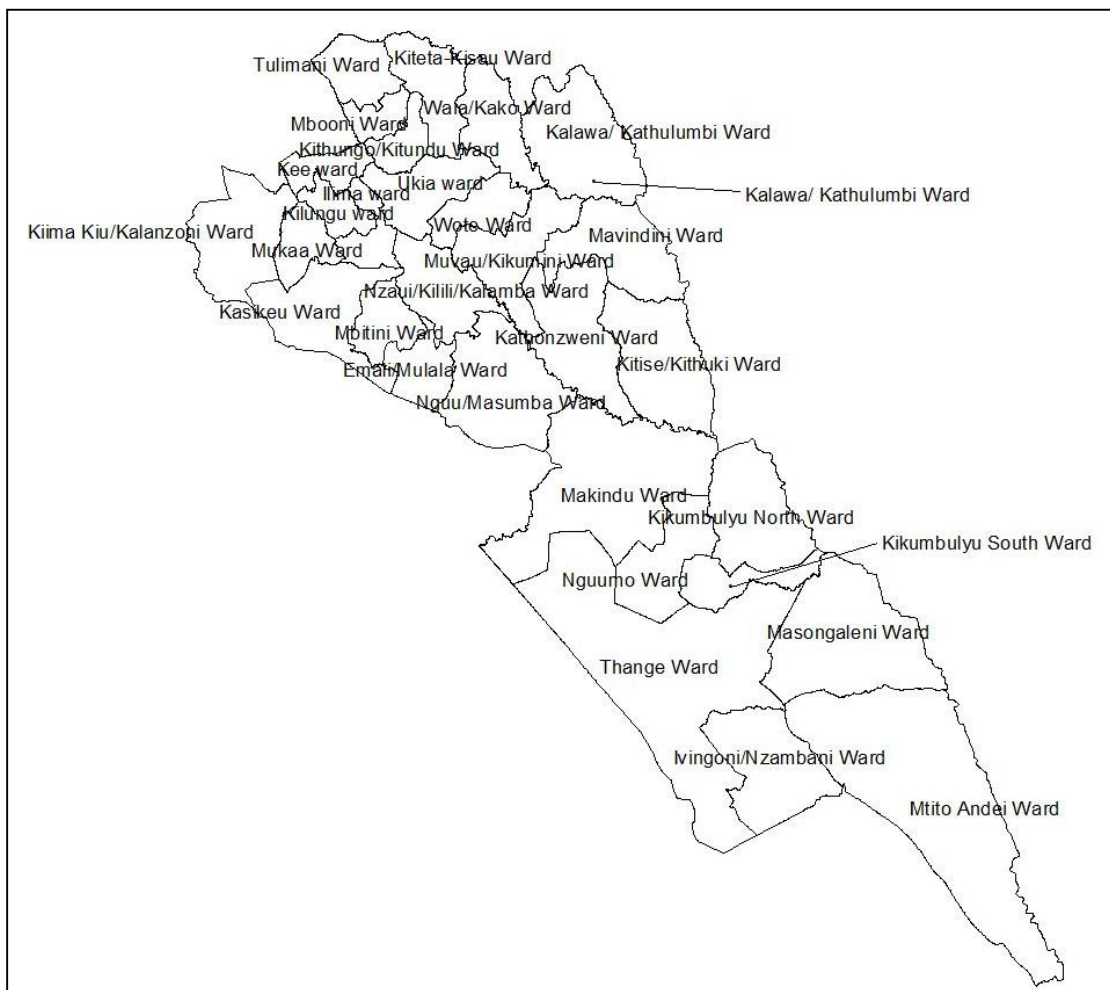
- i) Choosing the right crops to plant:
  - To minimize risks, choose the crops whose seasonal Crop Water requirement is within the lower limit value of the predicted range
- ii) Onset dates
  - For those wishing to dry plant, it is advisable to plant in the 1st week of the forecasted onset dates
  - For those wishing to wet plant, it is advisable to wait for the weekly weather update which is more accurate.
  - The onset dates predicted in this seasonal forecast should be used in conjunction with weekly Weather forecasts/updates which are more accurate.

## 5 How to get Weather Updates

You can get weekly weather forecasts/updates from the Counties folder in the KMD website i.e <https://meteo.go.ke/node/4942> every Monday evening or Tuesday Morning.

In the event that a Tropical Cyclone (not currently predicted) develops in the western sector of the Indian Ocean during the rainy season, the forecasted scenarios may change significantly in which case, updates will be issued promptly.

## 6 Makueni Wards Map



---

**PREPARED BY: JONATHAN M. NGAYAI \_ COUNTY DIRECTOR OF METEOROLOGICAL SERVICES  
MAKUENI COUNTY**

**Email:** [jngayai@yahoo.com](mailto:jngayai@yahoo.com); Mobile 0795929926/0721527936