

For further info:

Contact: Daniel M. Mbithi

Mobile No. 0715255171

Email: mbithi_d@yahoo.com

County Director of Meteorological Services Kitui County

Weekly Weather forecast for Kitui County

1.1 PART I: WEEKLY FORECAST FOR THE PERIOD 16th - 22nd April 2024 Weather forecast Table

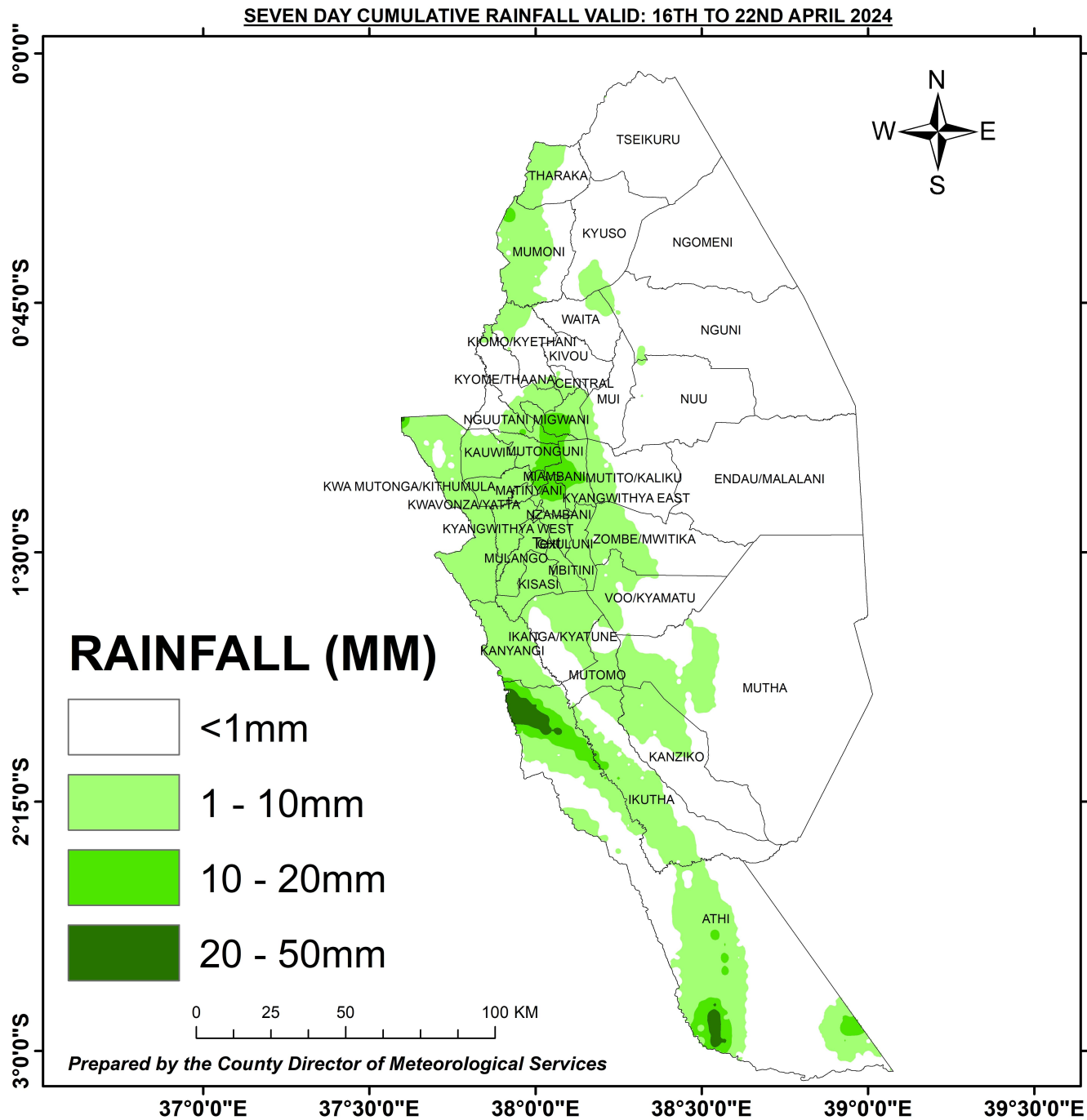
Sub County	Ward	Probable Total weekly amount (mm)	Probable weather							Winds (km/h kilometers per hour)	Temp (Tmax °C & Tmin °C)
			Notes: Light rains <1-5 mm; Moderate rains 5-20 mm; Heavy rains >20 mm; Very heavy rains >50 mm								
			Tue	Wed	Thur	Fri	Sat	Sun	Mon		
Mwingi West	Nguutani	>20 mm	Light rains	Light rains	Light rains	Light rains	Moderate rains	Moderate rains	Moderate rains	Easterly 14.4 km/h	Max 26-31 °C Min 18-21 °C
	Kyome/Thaana	>20 mm	Light rains	Light rains	Light rains	Light rains	Moderate rains	Moderate rains	Moderate rains	Easterly 14.4 km/h	
	Kiomo/Kyethani	>20 mm	Light rains	Light rains	Light rains	Light rains	Moderate rains	Moderate rains	Moderate rains	Easterly 14.4 km/h	
	Migwani	>20 mm	Light rains	Light rains	Light rains	Light rains	Moderate rains	Moderate rains	Moderate rains	Easterly 14.4 km/h	
Mwingi North	Ngomeni	>20 mm	Light rains	Light rains	Light rains	Light rains	Moderate rains	Moderate rains	Moderate rains	Easterly 18.0 km/h	Max 29-34 °C Min 20-23 °C
	Kyuso	>20 mm	Light rains	Light rains	Light rains	Light rains	Moderate rains	Moderate rains	Moderate rains	Easterly 18.0 km/h	

Sub County	Ward	Probable Total weekly amount (mm)	Probable weather Notes: Light rains <1-5 mm; Moderate rains 5-20 mm; Heavy rains >20 mm; Very heavy rains >50 mm							Winds (km/h kilometers per hour)	Temp (Tmax °C & Tmin °C)
			Tue	Wed	Thur	Fri	Sat	Sun	Mon	Weekly	Weekly
	Tseikuru	>20 mm	<i>Light rains</i>	<i>Light rains</i>	<i>Light rains</i>	<i>Light rains</i>	<i>Moderate rains</i>	<i>Moderate rains</i>	<i>Moderate rains</i>	Easterly 18.0 km/h	
	Tharaka	>20 mm	<i>Light rains</i>	<i>Light rains</i>	<i>Light rains</i>	<i>Light rains</i>	<i>Moderate rains</i>	<i>Moderate rains</i>	<i>Moderate rains</i>	Easterly 14.4 km/h	
	Mumoni	>20 mm	<i>Light rains</i>	<i>Light rains</i>	<i>Light rains</i>	<i>Light rains</i>	<i>Moderate rains</i>	<i>Moderate rains</i>	<i>Moderate rains</i>	Easterly 18.0 km/h	
Mwingi Central	Central	>20 mm	<i>Light rains</i>	<i>Light rains</i>	<i>Light rains</i>	<i>Light rains</i>	<i>Moderate rains</i>	<i>Moderate rains</i>	<i>Moderate rains</i>	Easterly 18.0 km/h	Max 28-33 °C Min 19-22 °C
	Kivou	>20 mm	<i>Light rains</i>	<i>Light rains</i>	<i>Light rains</i>	<i>Light rains</i>	<i>Moderate rains</i>	<i>Moderate rains</i>	<i>Moderate rains</i>	Easterly 18.0 km/h	
	Mui	>20 mm	<i>Light rains</i>	<i>Light rains</i>	<i>Light rains</i>	<i>Light rains</i>	<i>Moderate rains</i>	<i>Moderate rains</i>	<i>Moderate rains</i>	Easterly 18.0 km/h	
	Waita	>20 mm	<i>Light rains</i>	<i>Light rains</i>	<i>Light rains</i>	<i>Light rains</i>	<i>Moderate rains</i>	<i>Moderate rains</i>	<i>Moderate rains</i>	Easterly 18.0 km/h	
	Nuu	>20 mm	<i>Light rains</i>	<i>Light rains</i>	<i>Light rains</i>	<i>Light rains</i>	<i>Moderate rains</i>	<i>Moderate rains</i>	<i>Moderate rains</i>	Easterly 18.0 km/h	
	Nguni	>20 mm	<i>Light rains</i>	<i>Light rains</i>	<i>Light rains</i>	<i>Light rains</i>	<i>Moderate rains</i>	<i>Moderate rains</i>	<i>Moderate rains</i>	Easterly 18.0 km/h	
Kitui South	Ikanga/Kyatune	>20 mm	<i>Light rains</i>	<i>Light rains</i>	<i>Light rains</i>	<i>Light rains</i>	<i>Moderate rains</i>	<i>Moderate rains</i>	<i>Moderate rains</i>	Easterly 18.0 km/h	Max 28-32 °C Min 19-22 °C
	Mutomo/Kibwea	>20 mm	<i>Light rains</i>	<i>Light rains</i>	<i>Light rains</i>	<i>Light rains</i>	<i>Moderate rains</i>	<i>Moderate rains</i>	<i>Moderate rains</i>	Easterly 14.4 km/h	
	Kanziko/Simisi	>20 mm	<i>Light rains</i>	<i>Light rains</i>	<i>Light rains</i>	<i>Light rains</i>	<i>Moderate rains</i>	<i>Moderate rains</i>	<i>Moderate rains</i>	Easterly 14.4 km/h	
	Mutha	>20 mm	<i>Light rains</i>	<i>Light rains</i>	<i>Light rains</i>	<i>Light rains</i>	<i>Moderate rains</i>	<i>Moderate rains</i>	<i>Moderate rains</i>	Easterly 14.4 km/h	

Sub County	Ward	Probable Total weekly amount (mm)	Probable weather Notes: Light rains <1-5 mm; Moderate rains 5-20 mm; Heavy rains >20 mm; Very heavy rains >50 mm							Winds (km/h kilometers per hour)	Temp (Tmax °C & Tmin °C)
			Tue	Wed	Thur	Fri	Sat	Sun	Mon	Weekly	Weekly
	Ikutha	>20 mm	<i>Light rains</i>	<i>Light rains</i>	<i>Light rains</i>	<i>Light rains</i>	<i>Moderate rains</i>	<i>Moderate rains</i>	<i>Moderate rains</i>	Easterly 14.4 km/h	
	Athi	>20 mm	<i>Light rains</i>	<i>Light rains</i>	<i>Light rains</i>	<i>Light rains</i>	<i>Moderate rains</i>	<i>Moderate rains</i>	<i>Moderate rains</i>	Easterly 14.4 km/h	
Kitui East	Chuluni	>20 mm	<i>Light rains</i>	<i>Light rains</i>	<i>Light rains</i>	<i>Light rains</i>	<i>Moderate rains</i>	<i>Moderate rains</i>	<i>Moderate rains</i>	Easterly 18.0 km/h	Max 27-33 °C Min 19-23 °C
	Nzambani	>20 mm	<i>Light rains</i>	<i>Light rains</i>	<i>Light rains</i>	<i>Light rains</i>	<i>Moderate rains</i>	<i>Moderate rains</i>	<i>Moderate rains</i>	Easterly 14.4 km/h	
	Mutito/Kaliku	>20 mm	<i>Light rains</i>	<i>Light rains</i>	<i>Light rains</i>	<i>Light rains</i>	<i>Moderate rains</i>	<i>Moderate rains</i>	<i>Moderate rains</i>	Easterly 14.4 km/h	
	Zombe/Mwitika	>20 mm	<i>Light rains</i>	<i>Light rains</i>	<i>Light rains</i>	<i>Light rains</i>	<i>Moderate rains</i>	<i>Moderate rains</i>	<i>Moderate rains</i>	Easterly 14.4 km/h	
	Voo/Kyamatu	>20 mm	<i>Light rains</i>	<i>Light rains</i>	<i>Light rains</i>	<i>Light rains</i>	<i>Moderate rains</i>	<i>Moderate rains</i>	<i>Moderate rains</i>	Easterly 14.4 km/h	
	Endau/Malalani	>20 mm	<i>Light rains</i>	<i>Light rains</i>	<i>Light rains</i>	<i>Light rains</i>	<i>Moderate rains</i>	<i>Moderate rains</i>	<i>Moderate rains</i>	Easterly 18.0 km/h	
Kitui Rural	Mbitini	>20 mm	<i>Light rains</i>	<i>Light rains</i>	<i>Light rains</i>	<i>Light rains</i>	<i>Moderate rains</i>	<i>Moderate rains</i>	<i>Moderate rains</i>	Easterly 18.0 km/h	Max 27-31 °C Min 18-20 °C
	Kisasi	>20 mm	<i>Light rains</i>	<i>Light rains</i>	<i>Light rains</i>	<i>Light rains</i>	<i>Moderate rains</i>	<i>Moderate rains</i>	<i>Moderate rains</i>	Easterly 18.0 km/h	
	Kanyangi	>20 mm	<i>Light rains</i>	<i>Light rains</i>	<i>Light rains</i>	<i>Light rains</i>	<i>Moderate rains</i>	<i>Moderate rains</i>	<i>Moderate rains</i>	Easterly 18.0 km/h	
	Yatta/Kwa Vonza	>20 mm	<i>Light rains</i>	<i>Light rains</i>	<i>Light rains</i>	<i>Light rains</i>	<i>Moderate rains</i>	<i>Moderate rains</i>	<i>Moderate rains</i>	Easterly 18.0 km/h	
Kitui West	Kauwi	>20 mm	<i>Light rains</i>	<i>Light rains</i>	<i>Light rains</i>	<i>Light rains</i>	<i>Moderate rains</i>	<i>Moderate rains</i>	<i>Moderate rains</i>	Easterly 18.0 km/h	Max 25-29 °C Min 17-19 °C

Sub County	Ward	Probable Total weekly amount (mm)	Probable weather							Winds (km/h kilometers per hour)	Temp (Tmax °C & Tmin °C)
			Notes: Light rains <1-5 mm; Moderate rains 5-20 mm; Heavy rains >20 mm; Very heavy rains >50 mm								
			Tue	Wed	Thur	Fri	Sat	Sun	Mon		
	Mutonguni	>20 mm	<i>Light rains</i>	<i>Light rains</i>	<i>Light rains</i>	<i>Light rains</i>	<i>Moderate rains</i>	<i>Moderate rains</i>	<i>Moderate rains</i>	Easterly 18.0 km/h	
	Matinyani	>20 mm	<i>Light rains</i>	<i>Light rains</i>	<i>Light rains</i>	<i>Light rains</i>	<i>Moderate rains</i>	<i>Moderate rains</i>	<i>Moderate rains</i>	Easterly 18.0 km/h	
	Kwa Mutonga/Kithumula	>20 mm	<i>Light rains</i>	<i>Light rains</i>	<i>Light rains</i>	<i>Light rains</i>	<i>Moderate rains</i>	<i>Moderate rains</i>	<i>Moderate rains</i>	Easterly 18.0 km/h	
Kitui Central	Kyangwithya East	>20 mm	<i>Light rains</i>	<i>Light rains</i>	<i>Light rains</i>	<i>Light rains</i>	<i>Moderate rains</i>	<i>Moderate rains</i>	<i>Moderate rains</i>	Easterly 18.0 km/h	Max 27-31 °C Min 18-22 °C
	Kyangwithya West	>20 mm	<i>Light rains</i>	<i>Light rains</i>	<i>Light rains</i>	<i>Light rains</i>	<i>Moderate rains</i>	<i>Moderate rains</i>	<i>Moderate rains</i>	Easterly 18.0 km/h	
	Mulango	>20 mm	<i>Light rains</i>	<i>Light rains</i>	<i>Light rains</i>	<i>Light rains</i>	<i>Moderate rains</i>	<i>Moderate rains</i>	<i>Moderate rains</i>	Easterly 18.0 km/h	
	Township	>20 mm	<i>Light rains</i>	<i>Light rains</i>	<i>Light rains</i>	<i>Light rains</i>	<i>Moderate rains</i>	<i>Moderate rains</i>	<i>Moderate rains</i>	Easterly 18.0 km/h	
	Miambani	>20 mm	<i>Light rains</i>	<i>Light rains</i>	<i>Light rains</i>	<i>Light rains</i>	<i>Moderate rains</i>	<i>Moderate rains</i>	<i>Moderate rains</i>	Easterly 18.0 km/h	

1.2 PART II: WEEKLY RAINFALL FORECAST MAP



The weather forecast map for Kitui County; valid: 16th - 22nd April 2024

1.3 PART III: FURTHER ADVISORIES

Summary

The County is expected to experience reduction in rainfall amounts in the early days of the forecast period and resume again around the weekend. Few areas are also likely to receive moderate to heavy rains of more than 30mm during the forecast period. Maximum temperatures are expected to range from 25°C - 34°C, while minimum temperatures are expected to range from 17°C - 23°C. *In light of this weather forecast, farmers are also advised to consult with respective local agricultural extension officers from the County Ministry of Agriculture and Livestock for more advice on the best farm practices.*

NOTE:

Peak month: April

MAM 2024 expected Cessation: 1st to 21st May 2024

Note: 1 mm of rainfall is equivalent to 1 litre of rainfall per square meter.

KEY OF SCIENTIFIC WORDS USED

Rainfall categories	
Range	Category
<5 mm	Light
5 - 20mm	Moderate
20 - 50mm	Heavy
>50mm	Very heavy

Rainfall coverage	
Term	Meaning
Most Places	Between 66% and 100%
Several Places	Between 33% and 66%
Few Places	Below 33%

Ushauri wa Idara ya Utabiri wa Hali ya Hewa:

Wakulima wanashauriwa kuwa wanaangalia utabiri wa kila wiki kwa maana ndio unaweza kuonyesha mabandiliko yakiweko msimu huu wa Mvua za Masika unapo endelea.

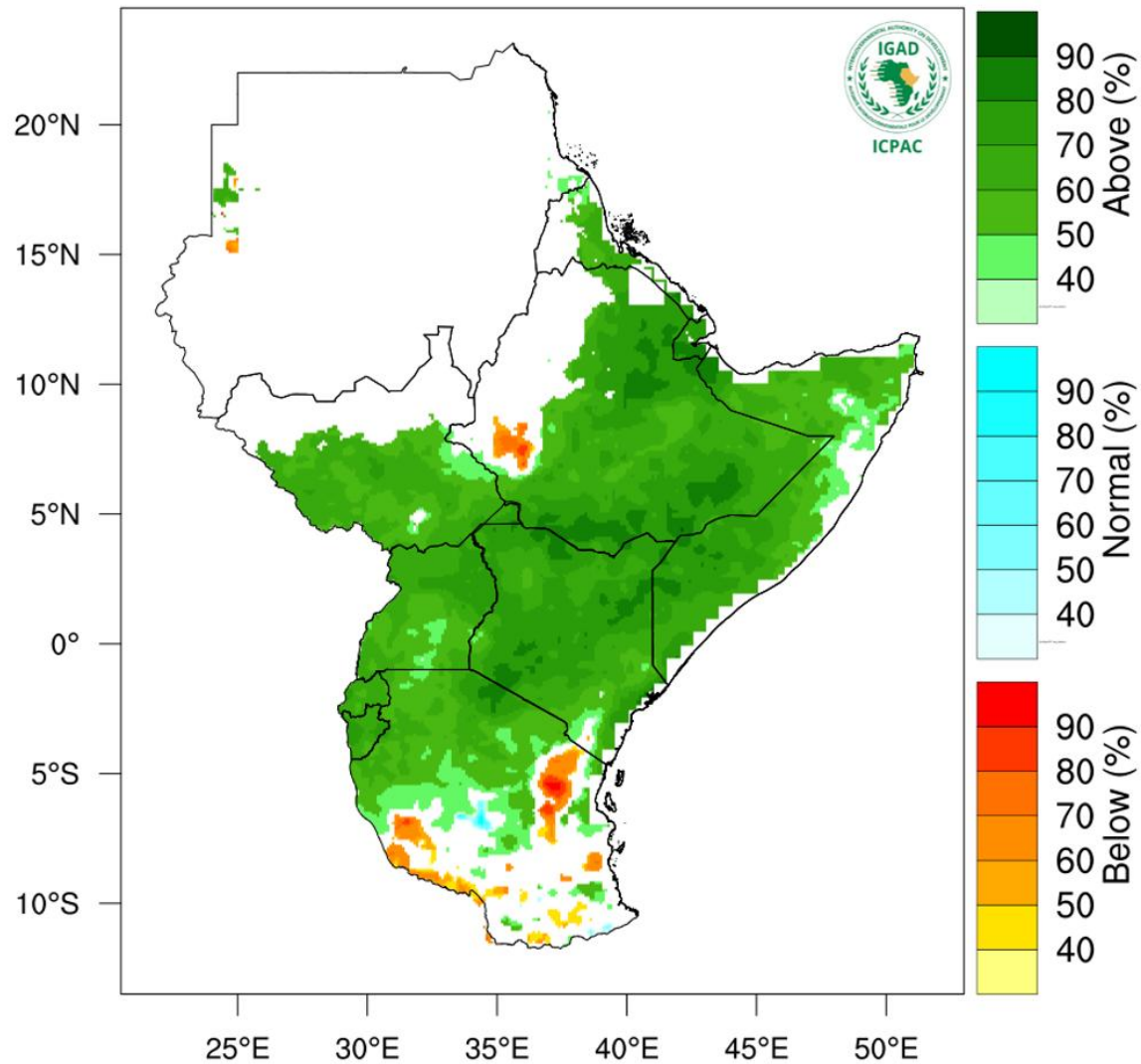
For further information, please contact:



Daniel M. Mbithi
County Director of Meteorological Services
Mobile: 0715255171
Email: mbithi_d@yahoo.com

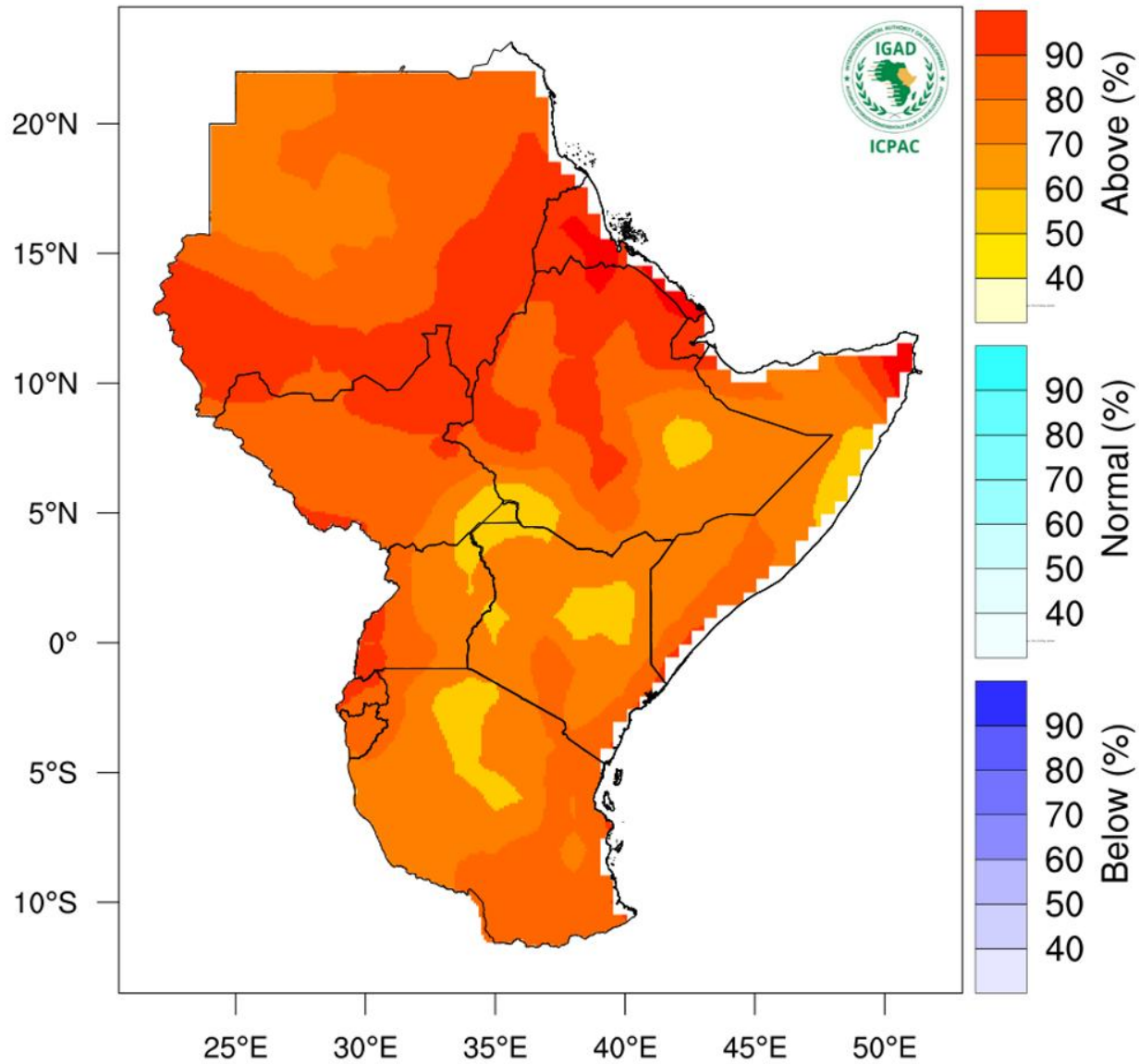
Annex I: Rainfall probabilistic forecast for Kenya during April 2024

Rainfall Probabilistic Forecast for April 2024



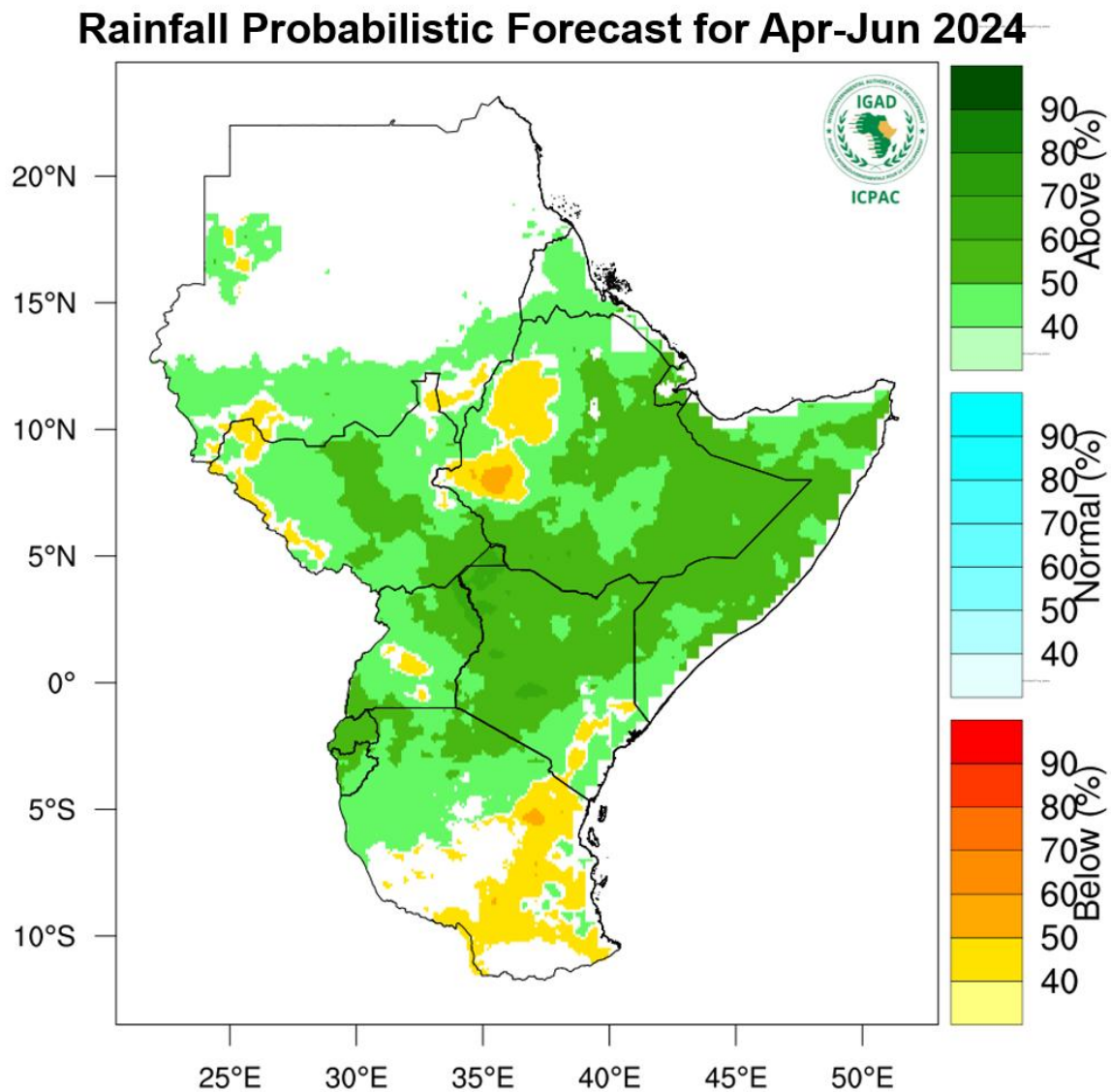
NB: Wetter than normal conditions expected over the month in Kitui County

Temperature Probabilistic Forecast for April 2024



NB: Warmer than usual conditions expected over most parts of the County.

Annex III: Rainfall forecast for the months of April to June 2024



NB: Wetter than usual conditions expected over most parts of the County between April and June 2024