



**KENYA
METEOROLOGICAL
DEPARTMENT**



INITIATIVE ON
Livestock and Climate

For further info:

Contact: Daniel M. Mbithi

Mobile No. 0715255171

Email: mbithi_d@yahoo.com

County Director of Meteorological Services Kitui County

Weekly Weather forecast for Kitui County

1.1 PART I: WEEKLY FORECAST FOR THE PERIOD 23rd - 29th July 2024 Weather forecast Table

Sub County	Ward	Probable Total weekly amount (mm)	Probable weather							Winds (km/h kilometers per hour)	Temp (Tmax °C & Tmin °C)
			Notes: Light rains <1-5 mm; Moderate rains 5-20 mm; Heavy rains >20 mm; Very heavy rains >50 mm								
			Tue	Wed	Thur	Fri	Sat	Sun	Mon	Weekly	Weekly
Mwingi West	Nguutani	0.0 mm	<i>Partly cloud</i>	<i>Partly cloud</i>	<i>Partly cloud</i>	<i>Partly cloud</i>	<i>Partly cloud</i>	<i>Partly cloud</i>	<i>Partly cloud</i>	Southerly 18.0 km/h	<i>Max 25-31 °C Min 15-18 °C</i>
	Kyome/Thaana	0.0 mm	<i>Partly cloud</i>	<i>Partly cloud</i>	<i>Partly cloud</i>	<i>Partly cloud</i>	<i>Partly cloud</i>	<i>Partly cloud</i>	<i>Partly cloud</i>	Southerly 18.0 km/h	
	Kiomo/Kyethani	0.0 mm	<i>Partly cloud</i>	<i>Partly cloud</i>	<i>Partly cloud</i>	<i>Partly cloud</i>	<i>Partly cloud</i>	<i>Partly cloud</i>	<i>Partly cloud</i>	Southerly 18.0 km/h	
	Migwani	0.0 mm	<i>Partly cloud</i>	<i>Partly cloud</i>	<i>Partly cloud</i>	<i>Partly cloud</i>	<i>Partly cloud</i>	<i>Partly cloud</i>	<i>Partly cloud</i>	Southerly 18.0 km/h	
Mwingi North	Ngomeni	0.0 mm	<i>Partly cloud</i>	<i>Partly cloud</i>	<i>Partly cloud</i>	<i>Partly cloud</i>	<i>Partly cloud</i>	<i>Partly cloud</i>	<i>Partly cloud</i>	Southerly 21.6 km/h	<i>Max 27-34 °C Min 17-22 °C</i>
	Kyuso	0.0 mm	<i>Partly cloud</i>	<i>Partly cloud</i>	<i>Partly cloud</i>	<i>Partly cloud</i>	<i>Partly cloud</i>	<i>Partly cloud</i>	<i>Partly cloud</i>	Southerly 21.6 km/h	
	Tseikuru	0.0 mm	<i>Partly cloud</i>	<i>Partly cloud</i>	<i>Partly cloud</i>	<i>Partly cloud</i>	<i>Partly cloud</i>	<i>Partly cloud</i>	<i>Partly cloud</i>	Southerly 18.0 km/h	
	Tharaka	0.0 mm	<i>Partly cloud</i>	<i>Partly cloud</i>	<i>Partly cloud</i>	<i>Partly cloud</i>	<i>Partly cloud</i>	<i>Partly cloud</i>	<i>Partly cloud</i>	Southerly 14.4 km/h	

Sub County	Ward	Probable Total weekly amount (mm)	Probable weather Notes: Light rains <1-5 mm; Moderate rains 5-20 mm; Heavy rains >20 mm; Very heavy rains >50 mm							Winds (km/h kilometers per hour)	Temp (Tmax °C & Tmin °C)	
			Tue	Wed	Thur	Fri	Sat	Sun	Mon	Weekly	Weekly	
	Mumoni	0.0 mm	Partly cloud	Partly cloud	Partly cloud	Partly cloud	Partly cloud	Partly cloud	Partly cloud	Partly cloud	km/h	
Mwingi Central	Central	0.0 mm	Partly cloud	Partly cloud	Partly cloud	Partly cloud	Partly cloud	Partly cloud	Partly cloud	Partly cloud	Southerly 18.0 km/h	Max 27-33 °C Min 15-20 °C
	Kivou	0.0 mm	Partly cloud	Partly cloud	Partly cloud	Partly cloud	Partly cloud	Partly cloud	Partly cloud	Partly cloud	Southerly 18.0 km/h	
	Mui	0.0 mm	Partly cloud	Partly cloud	Partly cloud	Partly cloud	Partly cloud	Partly cloud	Partly cloud	Partly cloud	Southerly 18.0 km/h	
	Waita	0.0 mm	Partly cloud	Partly cloud	Partly cloud	Partly cloud	Partly cloud	Partly cloud	Partly cloud	Partly cloud	Southerly 18.0 km/h	
	Nuu	0.0 mm	Partly cloud	Partly cloud	Partly cloud	Partly cloud	Partly cloud	Partly cloud	Partly cloud	Partly cloud	Southerly 18.0 km/h	
	Nguni	0.0 mm	Partly cloud	Partly cloud	Partly cloud	Partly cloud	Partly cloud	Partly cloud	Partly cloud	Partly cloud	Southerly 18.0 km/h	
Kitui South	Ikanga/Kyatune	0.0 mm	Partly cloud	Partly cloud	Partly cloud	Partly cloud	Partly cloud	Partly cloud	Partly cloud	Partly cloud	Southerly 14.4 km/h	Max 28-34 °C Min 15-19 °C
	Mutomo/Kibwea	0.0 mm	Partly cloud	Partly cloud	Partly cloud	Partly cloud	Partly cloud	Partly cloud	Partly cloud	Partly cloud	Southerly 14.4 km/h	
	Kanziko/Simisi	0.0 mm	Partly cloud	Partly cloud	Partly cloud	Partly cloud	Partly cloud	Partly cloud	Partly cloud	Partly cloud	Southerly 14.4 km/h	
	Mutha	0.0 mm	Partly cloud	Partly cloud	Partly cloud	Partly cloud	Partly cloud	Partly cloud	Partly cloud	Partly cloud	Southerly 14.4 km/h	
	Ikutha	0.0 mm	Partly cloud	Partly cloud	Partly cloud	Partly cloud	Partly cloud	Partly cloud	Partly cloud	Partly cloud	Southerly 18.0 km/h	
	Athi	0.0 mm	Partly cloud	Partly cloud	Partly cloud	Partly cloud	Partly cloud	Partly cloud	Partly cloud	Partly cloud	Southerly 18.0 km/h	
Kitui East	Chuluni	0.0 mm	Partly cloud	Partly cloud	Partly cloud	Partly cloud	Partly cloud	Partly cloud	Partly cloud	Partly cloud	Southerly 14.4 km/h	Max 26-34 °C Min 14-20 °C
	Nzambani	0.0 mm	Partly cloud	Partly cloud	Partly cloud	Partly cloud	Partly cloud	Partly cloud	Partly cloud	Partly cloud	Southerly 14.4 km/h	
	Mutito/Kaliku	0.0 mm	Partly cloud	Partly cloud	Partly cloud	Partly cloud	Partly cloud	Partly cloud	Partly cloud	Partly cloud	Southerly 14.4 km/h	
	Zombe/Mwitika	0.0 mm	Partly cloud	Partly cloud	Partly cloud	Partly cloud	Partly cloud	Partly cloud	Partly cloud	Partly cloud	Southerly 14.4 km/h	
	Voo/Kyamatu	0.0 mm	Partly cloud	Partly cloud	Partly cloud	Partly cloud	Partly cloud	Partly cloud	Partly cloud	Partly cloud	Southerly 18.0 km/h	
	Endau/Malalani	0.0 mm	Partly cloud	Partly cloud	Partly cloud	Partly cloud	Partly cloud	Partly cloud	Partly cloud	Partly cloud	Southerly 18.0 km/h	

Sub County	Ward	Probable Total weekly amount (mm)	Probable weather							Winds (km/h kilometers per hour)	Temp (Tmax °C & Tmin °C)
			Notes: Light rains <1-5 mm; Moderate rains 5-20 mm; Heavy rains >20 mm; Very heavy rains >50 mm								
			Tue	Wed	Thur	Fri	Sat	Sun	Mon	Weekly	Weekly
Kitui Rural	Mbitini	0.0 mm	<i>Partly cloud</i>	<i>Partly cloud</i>	<i>Partly cloud</i>	<i>Partly cloud</i>	<i>Partly cloud</i>	<i>Partly cloud</i>	<i>Partly cloud</i>	Southerly 14.4 km/h	Max 27-30 °C Min 14-17 °C
	Kisasi	0.0 mm	<i>Partly cloud</i>	<i>Partly cloud</i>	<i>Partly cloud</i>	<i>Partly cloud</i>	<i>Partly cloud</i>	<i>Partly cloud</i>	<i>Partly cloud</i>	Southerly 14.4 km/h	
	Kanyangi	0.0 mm	<i>Partly cloud</i>	<i>Partly cloud</i>	<i>Partly cloud</i>	<i>Partly cloud</i>	<i>Partly cloud</i>	<i>Partly cloud</i>	<i>Partly cloud</i>	Southerly 14.4 km/h	
	Yatta/Kwa Vonza	0.0 mm	<i>Partly cloud</i>	<i>Partly cloud</i>	<i>Partly cloud</i>	<i>Partly cloud</i>	<i>Partly cloud</i>	<i>Partly cloud</i>	<i>Partly cloud</i>	Southerly 14.4 km/h	
Kitui West	Kauwi	0.0 mm	<i>Partly cloud</i>	<i>Partly cloud</i>	<i>Partly cloud</i>	<i>Partly cloud</i>	<i>Partly cloud</i>	<i>Partly cloud</i>	<i>Partly cloud</i>	Southerly 18.0 km/h	Max 24-28 °C Min 13-16 °C
	Mutonguni	0.0 mm	<i>Partly cloud</i>	<i>Partly cloud</i>	<i>Partly cloud</i>	<i>Partly cloud</i>	<i>Partly cloud</i>	<i>Partly cloud</i>	<i>Partly cloud</i>	Southerly 14.4 km/h	
	Matinyani	0.0 mm	<i>Partly cloud</i>	<i>Partly cloud</i>	<i>Partly cloud</i>	<i>Partly cloud</i>	<i>Partly cloud</i>	<i>Partly cloud</i>	<i>Partly cloud</i>	Southerly 14.4 km/h	
	Kwa Mutonga/Kithumula	0.0 mm	<i>Partly cloud</i>	<i>Partly cloud</i>	<i>Partly cloud</i>	<i>Partly cloud</i>	<i>Partly cloud</i>	<i>Partly cloud</i>	<i>Partly cloud</i>	Southerly 14.4 km/h	
Kitui Central	Kyangwithya East	0.0 mm	<i>Partly cloud</i>	<i>Partly cloud</i>	<i>Partly cloud</i>	<i>Partly cloud</i>	<i>Partly cloud</i>	<i>Partly cloud</i>	<i>Partly cloud</i>	Southerly 14.4 km/h	Max 26-31 °C Min 15-18 °C
	Kyangwithya West	0.0 mm	<i>Partly cloud</i>	<i>Partly cloud</i>	<i>Partly cloud</i>	<i>Partly cloud</i>	<i>Partly cloud</i>	<i>Partly cloud</i>	<i>Partly cloud</i>	Southerly 14.4 km/h	
	Mulango	0.0 mm	<i>Partly cloud</i>	<i>Partly cloud</i>	<i>Partly cloud</i>	<i>Partly cloud</i>	<i>Partly cloud</i>	<i>Partly cloud</i>	<i>Partly cloud</i>	Southerly 14.4 km/h	
	Township	0.0 mm	<i>Partly cloud</i>	<i>Partly cloud</i>	<i>Partly cloud</i>	<i>Partly cloud</i>	<i>Partly cloud</i>	<i>Partly cloud</i>	<i>Partly cloud</i>	Southerly 14.4 km/h	
	Miambani	0.0 mm	<i>Partly cloud</i>	<i>Partly cloud</i>	<i>Partly cloud</i>	<i>Partly cloud</i>	<i>Partly cloud</i>	<i>Partly cloud</i>	<i>Partly cloud</i>	Southerly 14.4 km/h	

1.2 PART III: FURTHER ADVISORIES

SUMMARY ABOUT THE WEEKLY FORECAST:

Intermittent cool and partly cloudy conditions expected over several parts of the County with a small chance (33%) of light drizzle over high ground areas.

Maximum temperatures are expected to range from 24°C - 34°C, while minimum temperatures are expected to range from 13°C - 22°C. Strong southerly to south-easterly winds with speeds exceeding 25 knots (12.9 m/s) are expected in most parts of the County. *In light of this weather forecast, farmers are also advised to consult with respective local extension officers from the County Ministry of Agriculture and Livestock at ward level for more advice on the best farm practices.*

Note: 1 mm of rainfall is equivalent to 1 litre of rainfall per square meter.

KEY OF SCIENTIFIC WORDS USED

Rainfall categories	
Range	Category
0.0 mm	Light
5 - 20mm	Moderate
20 - 50mm	Heavy
>50mm	Very heavy

Rainfall coverage	
Term	Meaning
Most Places	Between 66% and 100%
Several Places	Between 33% and 66%
Few Places	Below 33%

Ushauri wa Idara ya Utabiri wa Hali ya Hewa:

Wakulima wanashauriwa kuendelea kuvuna chakula chao na kuianika kwa jua vizuri hili kuzuia athari za sumu kuvu.

For further information, please contact:

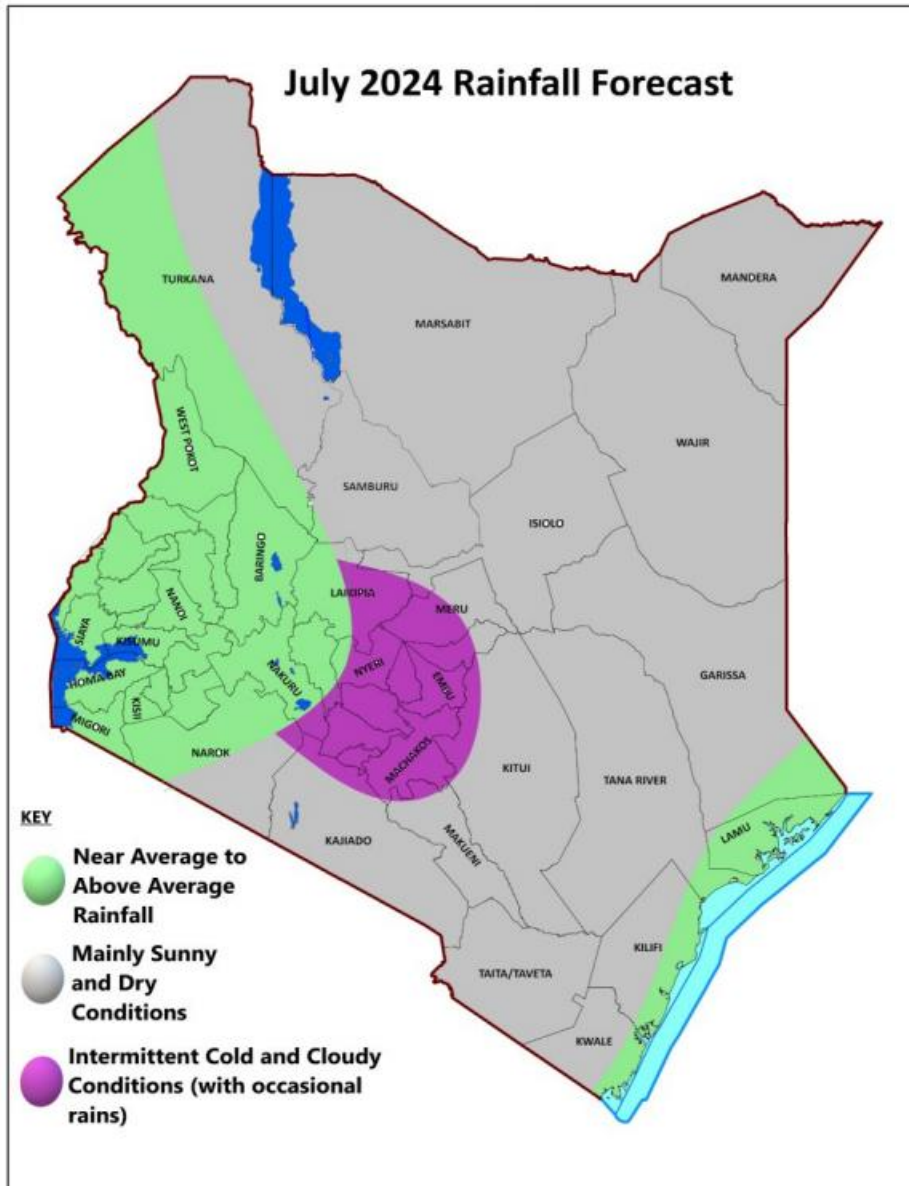


Daniel M. Mbithi
County Director of Meteorological Services
Mobile: 0715255171
Email: mbithi_d@yahoo.com

You can find more information about the climate and weather in Kenya on the KMD website

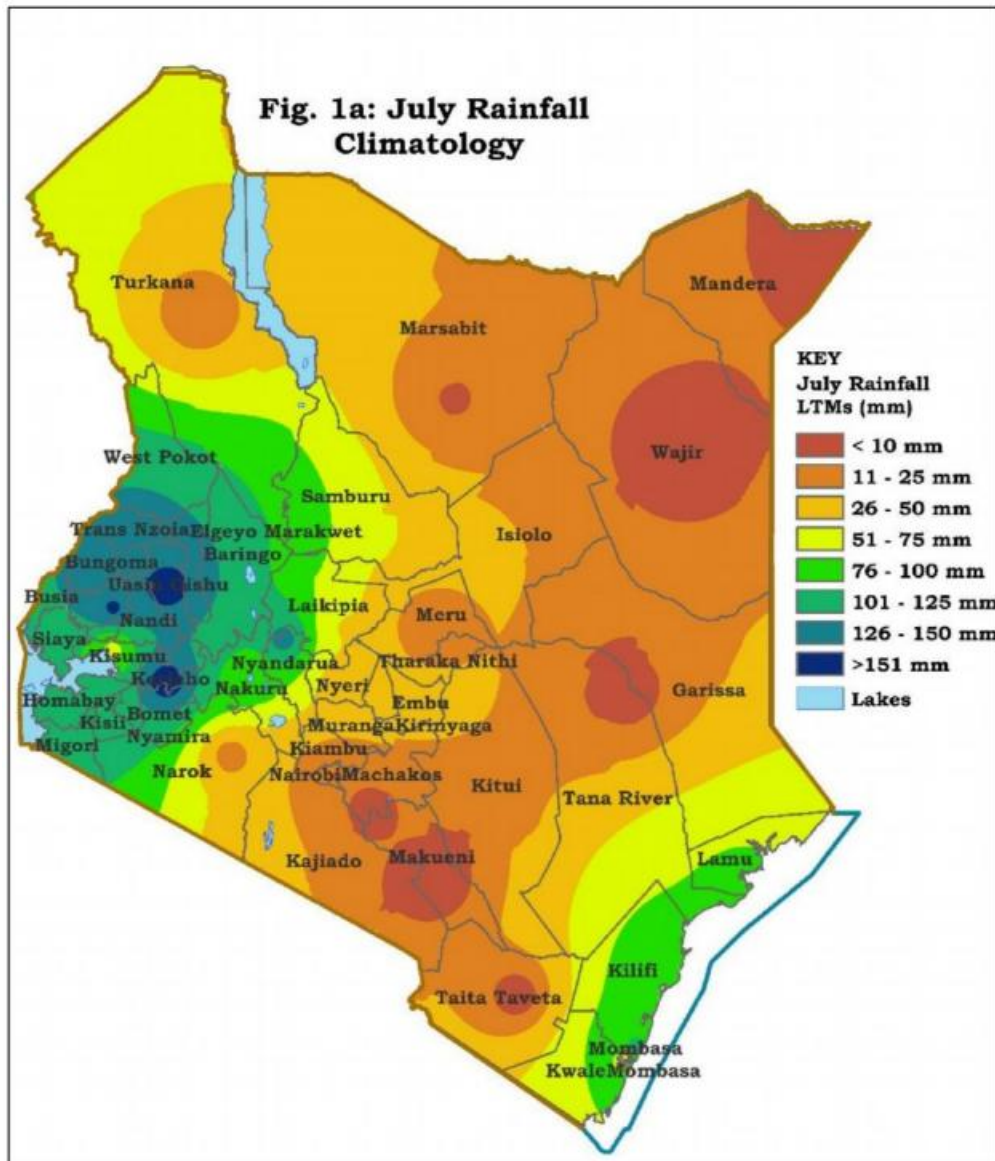
<http://www.meteo.go.ke/>

Annex I: Rainfall probabilistic forecast for Kenya during July 2024



NB: July 2024 Rainfall Forecast; near to below normal conditions expected over the month in Kitui County

Annex II: Rainfall climatology for Kenya during July



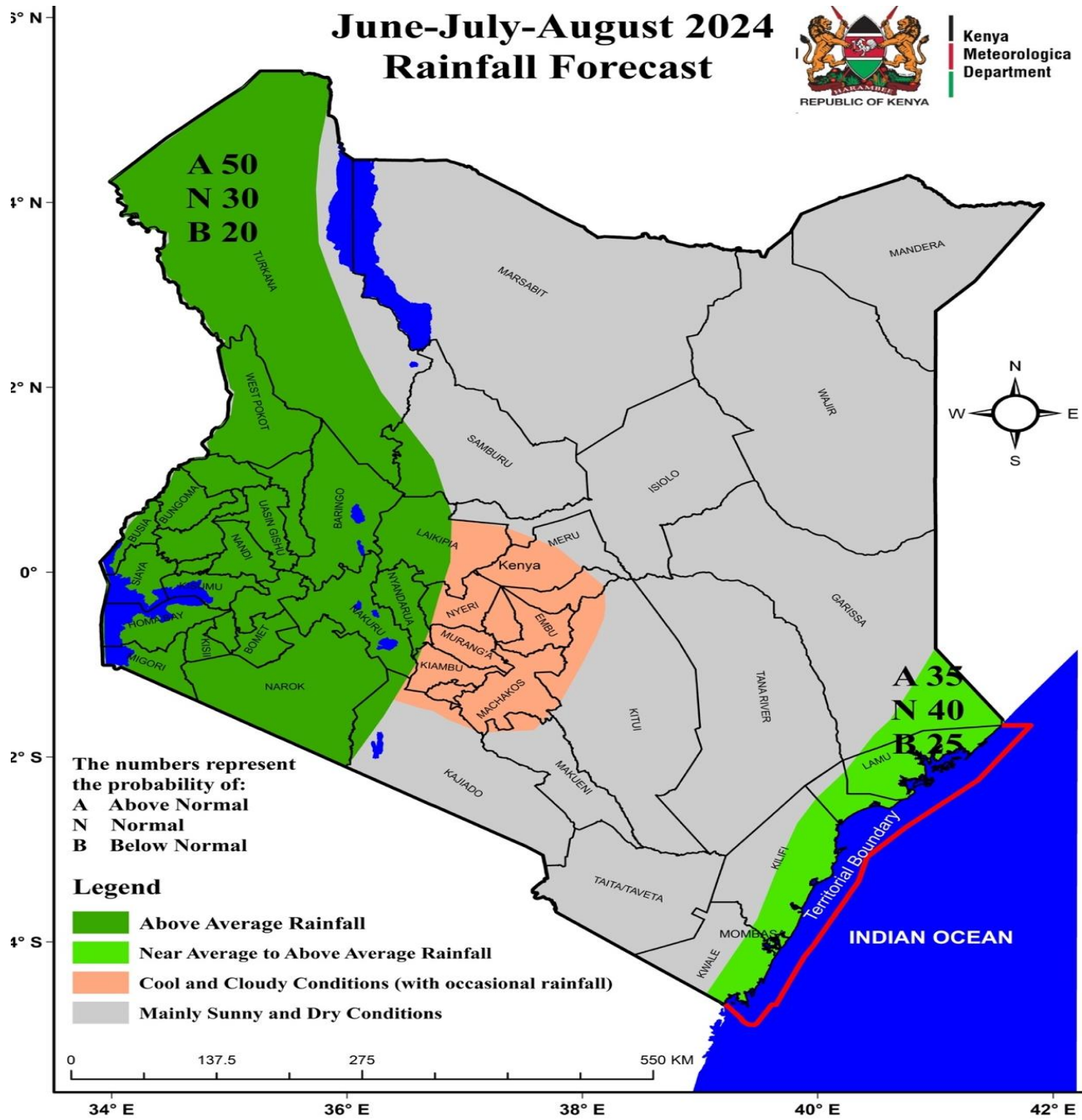
NB: Near to below normal conditions expected over most parts of the County during July 2024

Annex III: Rainfall forecast for the months of June to August 2024

June-July-August 2024 Rainfall Forecast



Kenya
Meteorologica
Department



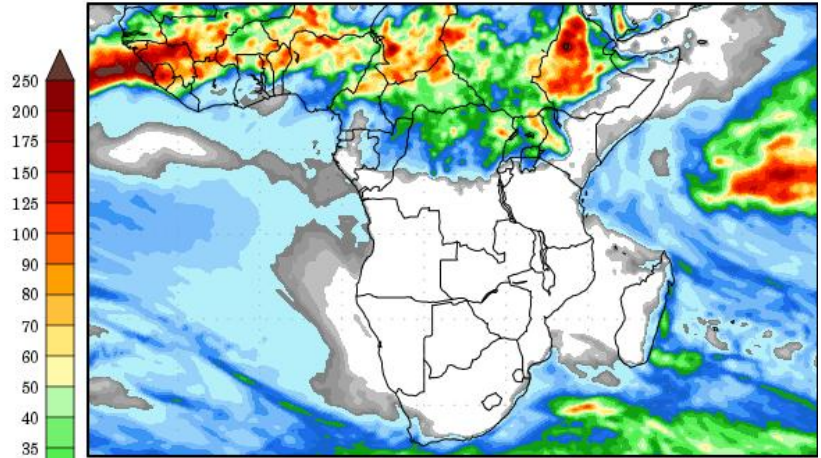
NB: Near to below normal conditions expected over most parts of the County between June and August 2024

Annex IV: Rainfall forecast for 22nd July to 7th August, 2024

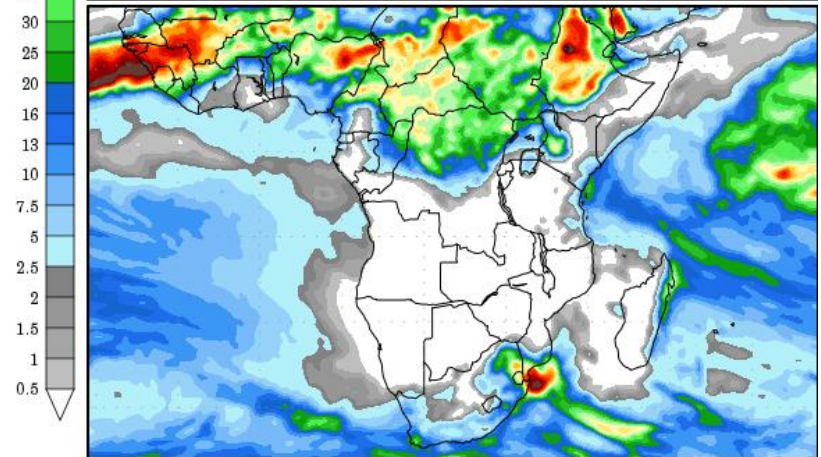
Precipitation Forecasts

Precipitation (mm)
during the period:

???, 22 JUL 2024 at 00Z
-to-
???, 30 JUL 2024 at 00Z

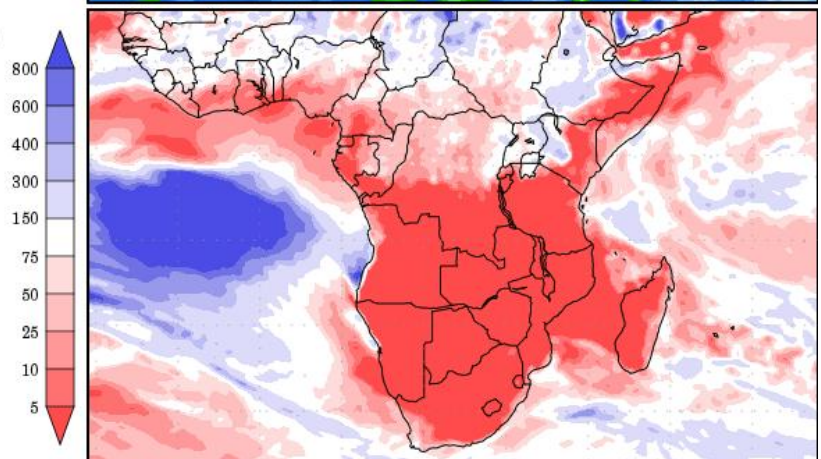


???, 30 JUL 2024 at 00Z
-to-
???, 07 AUG 2024 at 00Z



Precipitation (% of normal)
during the first period:

???, 22 JUL 2024 at 00Z
-to-
???, 30 JUL 2024 at 00Z



NB: Near to below normal conditions expected over several parts of the County between 22nd July to 7th August, 2024