



**REPUBLIC OF KENYA**  
**MINISTRY OF ENVIRONMENT, CLIMATE CHANGE AND FORESTRY**  
**KENYA METEOROLOGICAL DEPARTMENT**  
**MOI INTERNATIONAL AIRPORT, CONTROL TOWER**  
**COUNTY DIRECTOR OF METEOROLOGICAL SERVICES**  
P.O. Box 98512-80100, MOMBASA  
Mob. +254 731341118, **E-mail:** [cmmombasa@meteo.go.ke](mailto:cmmombasa@meteo.go.ke)

---

*Our Ref: MET/MSA-CNTY/WK3/JULY2024*

*Date of Issue: 15th JULY 2024*

---

## **MOMBASA COUNTY WEEKLY WEATHER FORECAST VALID 16<sup>TH</sup> – 22<sup>ND</sup> JULY 2024**

---

### **PART-I: Mombasa County Weekly Weather Outlook**

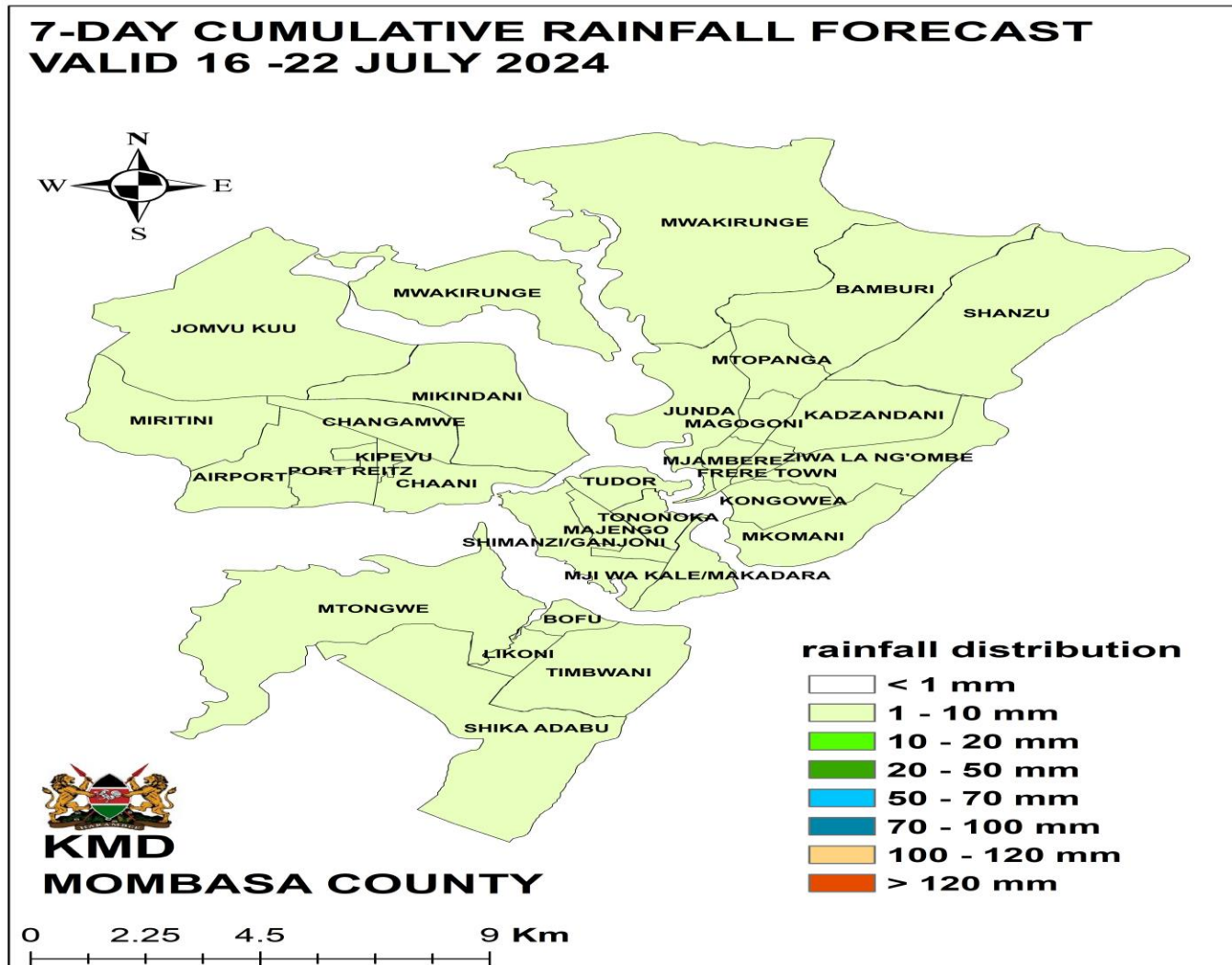
- 1 Dry conditions are expected throughout the forecast week with few places experiencing showers in the morning.
- 2 The expected range of daytime MAXIMUM temperature is 30- 31 °C; the average MINIMUM temperature will be around 25 °C.
- 3 Winds are from south to South East with strengths varying between 8 - 11 m/s (16 – 22 Kt) throughout the forecast period.
- 4 Moderate to slightly rough Ocean conditions will prevail throughout the forecast week with wave heights of between 1.5 m to 2.4 m (4.5 to 7.5 ft). Significant wave heights of up to 2.4 m will be experienced at the beginning of the forecast week (Tuesday and Wednesday)

**5 CAUTIONS IS ADVISED WHILE CONDUCTING MARINE ACTIVITIES IN DEEP SEAS THROUGHOUT THE WEEK**

---



### PART III: WEEKLY CUMULATIVE RAINFALL DISTRIBUTION



## PART-IV: WEATHER SYMBOLS

### Key for Marine Hazard Symbols

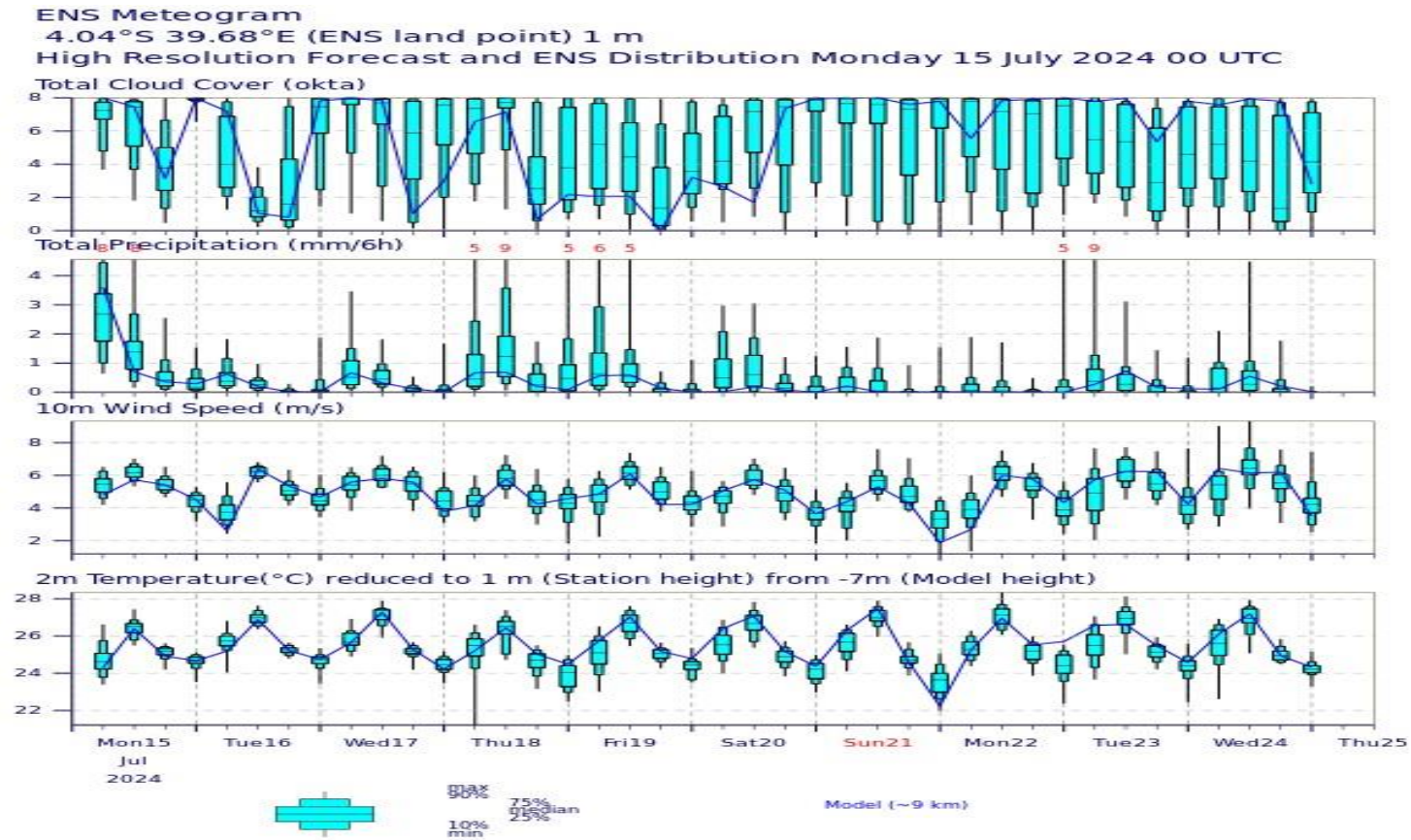
| WAVE HEIGHT RANGE (Metres)  |               | DESCRIPTION  | IMPACT  |
|---|---------------|--|---|
| 0.5 – 1.0   |               | SLIGHT SEA STATE   | Conditions suitable for Marine activities   |
| 1.1 – 2.0   |               | MODERATE SEA STATE   |   |
| 2.1 – 3.0   |               | ROUGH  |   |
| >3.0  |               | VERY ROUGH   | Caution when operating marine activities  |
|   |               |  | Warning in place!!!!  |
|   |               |  | Warning in place on marine activities   |
| Conditions suitable for Marine Activities   |               |  |   |
| Caution required when operating Marine Activities in deep seas (Significant high waves) |               |  |   |
| Warning in Place (Sea significantly Rough)  |               |  |   |
| WIND  | RANGE         | DESCRIPTIONS   | IMPACT  |
| SPEEDS  | < 1           | -Calm:   | 1 – 6 knots, the Ocean is relatively calm with very little disturbance. Suitable for Marine operations  |
|   | 1 – 3 Knots   | -Light air: rising smoke drifts  |   |
|   | 4 – 6 Knots   | -Light breeze: can feel wind on the face, small wavelets develop.                              | 7 – 17 knots, small boats are likely to be filled with water sprays and become unstable.<br>Caution in carrying our marine activities             |
|   | 7 – 10 Knots  | -Gentle breeze: Light weight flags extend, small wavelets, some whitecaps develop              |   |
|   | 11 – 16 Knots | -Moderate Breeze: Small waves develop and become longer  | More than 20 knots, the ocean state is very much disturbed and the prevailing conditions is dangerous for marine operations. Warning in place!!!! |
|   | 17 – 21 Knots | -Fresh breeze: white crested wavelets form with some sprays                                    |   |
|   | 22 – 27 Knots | -Strong breeze: large waves form, white caps and sprays:                                       |   |
|   | 28 – 33 Knots | -Very strong winds: larger waves develop and white foams from breaking waves begin to be blown |   |
|   | >34 Knots     | Extremely strong. Larger waves with blown foams  |   |
| DIRECTIONS  | N, E, S, W    | The pointer indicates the direction from which the wind is blowing from                        |   |

*Mr. Joseph Amollo*

County Director of Meteorological Services, Mombasa County

## ADDITIONAL INFORMATION

### 10 DAYS FORECASTS FOR WINDS, PRECIPITATIONS AND TEMPERATURE IN MOMBASA



*No significant precipitation during the forecast period*



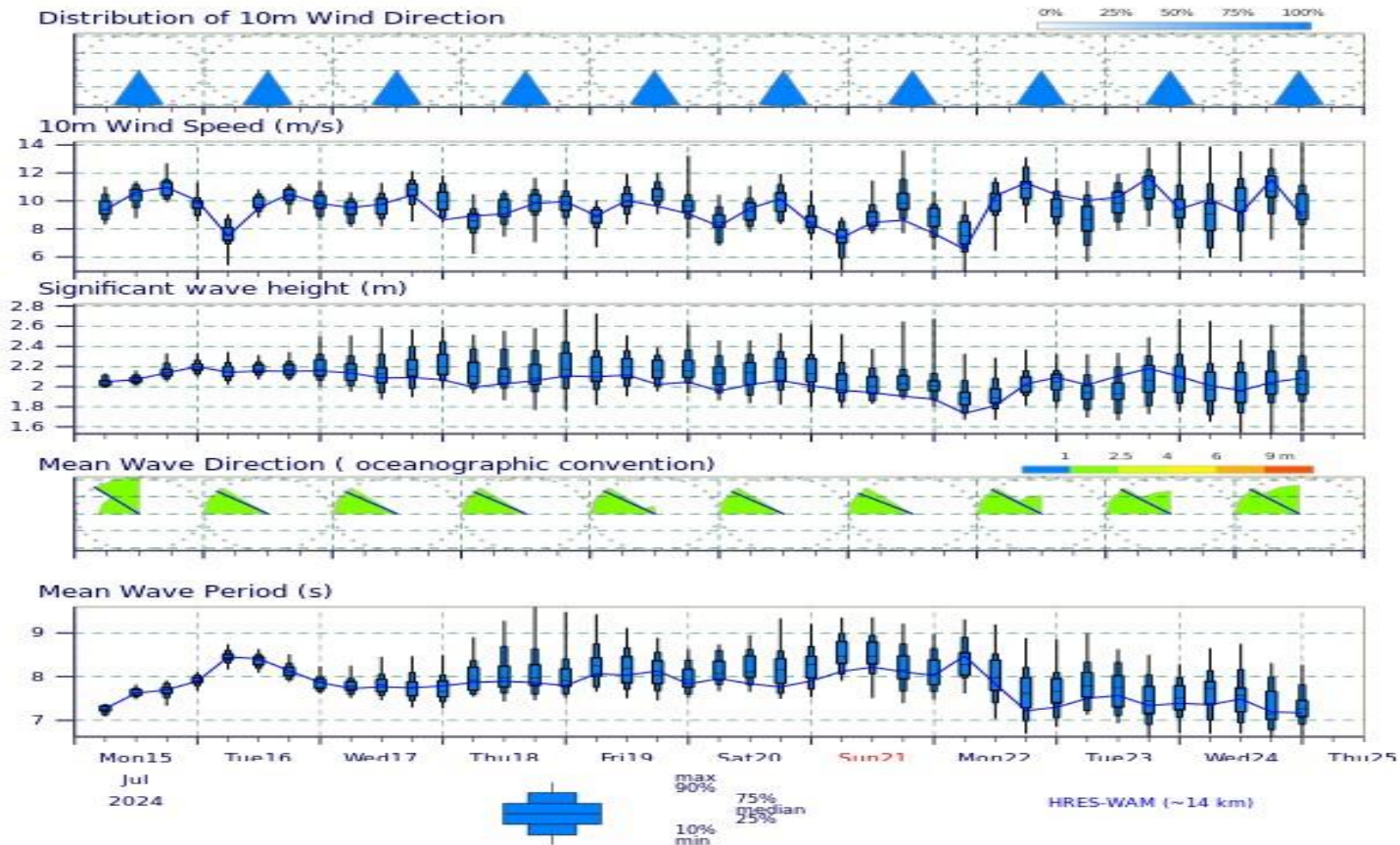
# TEN DAYS SIGNIFICANT WAVE HEIGHTS, WINDS, OVER SOUTH WEST INDIAN OCEAN

Wave ENSgram

3.5°S 40.06°E (ENS sea point)

Monday 15 July 2024 00 UTC

Distribution of 10m Wind Direction



*The distribution of wind directions is south Easterly, throughout the 10 days forecast period, the wind speeds vary between 7 m/s and 11 m/s, the wave heights vary between 1.5 m and 2.2 m. The wave directions are southeasterly (SE) and the wave periods between 7 and 9 seconds.*