



For further info:

Contact: Daniel M. Mbithi

Mobile No. 0715255171

Email: mbithi_d@yahoo.com

County Director of Meteorological Services Kitui County

Weekly Weather forecast for Kitui County

1.1 PART I: WEEKLY FORECAST FOR THE PERIOD 3rd - 9th September 2024 Weather forecast Table

Sub County	Ward	Probable Total weekly amount (mm)	Probable weather							Winds (km/h kilometers per hour)	Temp (Tmax °C & Tmin °C)
			Notes: Light rains <1-5 mm; Moderate rains 5-20 mm; Heavy rains >20 mm; Very heavy rains >50 mm								
			Tue	Wed	Thur	Fri	Sat	Sun	Mon	Weekly	Weekly
Mwingi West	Nguutani	<10 mm	Partly cloud	Partly cloud	Moderate drizzle	Moderate drizzle	Partly cloud	Partly cloud	Partly cloud	Southerly 21.6 km/h	Max 24-32 °C Min 15-19 °C
	Kyome/Thaana	<10 mm	Partly cloud	Partly cloud	Moderate drizzle	Moderate drizzle	Partly cloud	Partly cloud	Partly cloud	Southerly 21.6 km/h	
	Kiomo/Kyethani	<10 mm	Partly cloud	Partly cloud	Moderate drizzle	Moderate drizzle	Partly cloud	Partly cloud	Partly cloud	Southerly 21.6 km/h	
	Migwani	<10 mm	Partly cloud	Partly cloud	Moderate drizzle	Moderate drizzle	Partly cloud	Partly cloud	Partly cloud	Southerly 21.6 km/h	
Mwingi North	Ngomeni	<10 mm	Partly cloud	Partly cloud	Moderate drizzle	Moderate drizzle	Partly cloud	Partly cloud	Partly cloud	Southerly 25.2 km/h	Max 27-34 °C Min 18-22 °C
	Kyuso	<10 mm	Partly cloud	Partly cloud	Moderate drizzle	Moderate drizzle	Partly cloud	Partly cloud	Partly cloud	Southerly 25.2 km/h	

Sub County	Ward	Probable Total weekly amount (mm)	Probable weather Notes: Light rains <1-5 mm; Moderate rains 5-20 mm; Heavy rains >20 mm; Very heavy rains >50 mm							Winds (km/h kilometers per hour)	Temp (Tmax °C & Tmin °C)
			Tue	Wed	Thur	Fri	Sat	Sun	Mon	Weekly	Weekly
	Tseikuru	<10 mm	<i>Partly cloud</i>	<i>Partly cloud</i>	<i>Moderate drizzle</i>	<i>Moderate drizzle</i>	<i>Partly cloud</i>	<i>Partly cloud</i>	<i>Partly cloud</i>	Southerly 25.2 km/h	
	Tharaka	<10 mm	<i>Partly cloud</i>	<i>Partly cloud</i>	<i>Moderate drizzle</i>	<i>Moderate drizzle</i>	<i>Partly cloud</i>	<i>Partly cloud</i>	<i>Partly cloud</i>	Southerly 21.6 km/h	
	Mumoni	<10 mm	<i>Partly cloud</i>	<i>Partly cloud</i>	<i>Moderate drizzle</i>	<i>Moderate drizzle</i>	<i>Partly cloud</i>	<i>Partly cloud</i>	<i>Partly cloud</i>	Southerly 25.2 km/h	
Mwingi Central	Central	<10 mm	<i>Partly cloud</i>	<i>Partly cloud</i>	<i>Moderate drizzle</i>	<i>Moderate drizzle</i>	<i>Partly cloud</i>	<i>Partly cloud</i>	<i>Partly cloud</i>	Southerly 21.6 km/h	Max 26-33 °C Min 17-20 °C
	Kivou	<10 mm	<i>Partly cloud</i>	<i>Partly cloud</i>	<i>Moderate drizzle</i>	<i>Moderate drizzle</i>	<i>Partly cloud</i>	<i>Partly cloud</i>	<i>Partly cloud</i>	Southerly 21.6 km/h	
	Mui	<10 mm	<i>Partly cloud</i>	<i>Partly cloud</i>	<i>Moderate drizzle</i>	<i>Moderate drizzle</i>	<i>Partly cloud</i>	<i>Partly cloud</i>	<i>Partly cloud</i>	Southerly 21.6 km/h	
	Waita	<10 mm	<i>Partly cloud</i>	<i>Partly cloud</i>	<i>Moderate drizzle</i>	<i>Moderate drizzle</i>	<i>Partly cloud</i>	<i>Partly cloud</i>	<i>Partly cloud</i>	Southerly 21.6 km/h	
	Nuu	<10 mm	<i>Partly cloud</i>	<i>Partly cloud</i>	<i>Moderate drizzle</i>	<i>Moderate drizzle</i>	<i>Partly cloud</i>	<i>Partly cloud</i>	<i>Partly cloud</i>	Southerly 21.6 km/h	
	Nguni	<10 mm	<i>Partly cloud</i>	<i>Partly cloud</i>	<i>Moderate drizzle</i>	<i>Moderate drizzle</i>	<i>Partly cloud</i>	<i>Partly cloud</i>	<i>Partly cloud</i>	Southerly 21.6 km/h	
Kitui South	Ikanga/Kyatune	<10 mm	<i>Partly cloud</i>	<i>Partly cloud</i>	<i>Moderate drizzle</i>	<i>Moderate drizzle</i>	<i>Partly cloud</i>	<i>Partly cloud</i>	<i>Partly cloud</i>	Southerly 18.0 km/h	Max 27-32 °C Min 17-20 °C
	Mutomo/Kibwea	<10 mm	<i>Partly cloud</i>	<i>Partly cloud</i>	<i>Moderate drizzle</i>	<i>Moderate drizzle</i>	<i>Partly cloud</i>	<i>Partly cloud</i>	<i>Partly cloud</i>	Southerly 18.0 km/h	
	Kanziko/Simisi	<10 mm	<i>Partly cloud</i>	<i>Partly cloud</i>	<i>Moderate drizzle</i>	<i>Moderate drizzle</i>	<i>Partly cloud</i>	<i>Partly cloud</i>	<i>Partly cloud</i>	Southerly 21.6 km/h	
	Mutha	<10 mm	<i>Partly cloud</i>	<i>Partly cloud</i>	<i>Moderate drizzle</i>	<i>Moderate drizzle</i>	<i>Partly cloud</i>	<i>Partly cloud</i>	<i>Partly cloud</i>	Southerly 21.6 km/h	

Sub County	Ward	Probable Total weekly amount (mm)	Probable weather Notes: Light rains <1-5 mm; Moderate rains 5-20 mm; Heavy rains >20 mm; Very heavy rains >50 mm							Winds (km/h kilometers per hour)	Temp (Tmax °C & Tmin °C)
			Tue	Wed	Thur	Fri	Sat	Sun	Mon		
	Ikutha	<10 mm	<i>Partly cloud</i>	<i>Partly cloud</i>	<i>Moderate drizzle</i>	<i>Moderate drizzle</i>	<i>Partly cloud</i>	<i>Partly cloud</i>	<i>Partly cloud</i>	Southerly 18.0 km/h	
	Athi	<10 mm	<i>Partly cloud</i>	<i>Partly cloud</i>	<i>Moderate drizzle</i>	<i>Moderate drizzle</i>	<i>Partly cloud</i>	<i>Partly cloud</i>	<i>Partly cloud</i>	Southerly 21.6 km/h	
Kitui East	Chuluni	<10 mm	<i>Partly cloud</i>	<i>Partly cloud</i>	<i>Moderate drizzle</i>	<i>Moderate drizzle</i>	<i>Partly cloud</i>	<i>Partly cloud</i>	<i>Partly cloud</i>	Southerly 21.6 km/h	Max 25-33 °C Min 15-21 °C
	Nzambani	<10 mm	<i>Partly cloud</i>	<i>Partly cloud</i>	<i>Moderate drizzle</i>	<i>Moderate drizzle</i>	<i>Partly cloud</i>	<i>Partly cloud</i>	<i>Partly cloud</i>	Southerly 21.6 km/h	
	Mutito/Kaliku	<10 mm	<i>Partly cloud</i>	<i>Partly cloud</i>	<i>Moderate drizzle</i>	<i>Moderate drizzle</i>	<i>Partly cloud</i>	<i>Partly cloud</i>	<i>Partly cloud</i>	Southerly 21.6 km/	
	Zombe/Mwitika	<10 mm	<i>Partly cloud</i>	<i>Partly cloud</i>	<i>Moderate drizzle</i>	<i>Moderate drizzle</i>	<i>Partly cloud</i>	<i>Partly cloud</i>	<i>Partly cloud</i>	Southerly 21.6 km/	
	Voo/Kyamatu	<10 mm	<i>Partly cloud</i>	<i>Partly cloud</i>	<i>Moderate drizzle</i>	<i>Moderate drizzle</i>	<i>Partly cloud</i>	<i>Partly cloud</i>	<i>Partly cloud</i>	Southerly 21.6 km/	
	Endau/Malalani	<10 mm	<i>Partly cloud</i>	<i>Partly cloud</i>	<i>Moderate drizzle</i>	<i>Moderate drizzle</i>	<i>Partly cloud</i>	<i>Partly cloud</i>	<i>Partly cloud</i>	Southerly 21.6 km/h	
Kitui Rural	Mbitini	<10 mm	<i>Partly cloud</i>	<i>Partly cloud</i>	<i>Moderate drizzle</i>	<i>Moderate drizzle</i>	<i>Partly cloud</i>	<i>Partly cloud</i>	<i>Partly cloud</i>	Southerly 18.0 km/h	Max 26-31 °C Min 15-19 °C
	Kisasi	<10 mm	<i>Partly cloud</i>	<i>Partly cloud</i>	<i>Moderate drizzle</i>	<i>Moderate drizzle</i>	<i>Partly cloud</i>	<i>Partly cloud</i>	<i>Partly cloud</i>	Southerly 18.0 km/h	
	Kyangi	<10 mm	<i>Partly cloud</i>	<i>Partly cloud</i>	<i>Moderate drizzle</i>	<i>Moderate drizzle</i>	<i>Partly cloud</i>	<i>Partly cloud</i>	<i>Partly cloud</i>	Southerly 21.6 km/h	
	Yatta/Kwa Vonza	<10 mm	<i>Partly cloud</i>	<i>Partly cloud</i>	<i>Moderate drizzle</i>	<i>Moderate drizzle</i>	<i>Partly cloud</i>	<i>Partly cloud</i>	<i>Partly cloud</i>	Southerly 18.0 km/h	
Kitui West	Kauwi	<10 mm	<i>Partly cloud</i>	<i>Partly cloud</i>	<i>Moderate drizzle</i>	<i>Moderate drizzle</i>	<i>Partly cloud</i>	<i>Partly cloud</i>	<i>Partly cloud</i>	Southerly 21.6 km/h	Max 23-28 °C Min 13-17 °C

Sub County	Ward	Probable Total weekly amount (mm)	Probable weather Notes: Light rains <1-5 mm; Moderate rains 5-20 mm; Heavy rains >20 mm; Very heavy rains >50 mm							Winds (km/h kilometers per hour)	Temp (Tmax °C & Tmin °C)
			Tue	Wed	Thur	Fri	Sat	Sun	Mon	Weekly	Weekly
	Mutonguni	<10 mm	<i>Partly cloud</i>	<i>Partly cloud</i>	<i>Moderate drizzle</i>	<i>Moderate drizzle</i>	<i>Partly cloud</i>	<i>Partly cloud</i>	<i>Partly cloud</i>	Southerly 21.6 km/h	
	Matinyani	<10 mm	<i>Partly cloud</i>	<i>Partly cloud</i>	<i>Moderate drizzle</i>	<i>Moderate drizzle</i>	<i>Partly cloud</i>	<i>Partly cloud</i>	<i>Partly cloud</i>	Southerly 21.6 km/h	
	Kwa Mutonga/ Kithumula	<10 mm	<i>Partly cloud</i>	<i>Partly cloud</i>	<i>Moderate drizzle</i>	<i>Moderate drizzle</i>	<i>Partly cloud</i>	<i>Partly cloud</i>	<i>Partly cloud</i>	Southerly 21.6 km/	
Kitui Central	Kyangwithya East	<10 mm	<i>Partly cloud</i>	<i>Partly cloud</i>	<i>Moderate drizzle</i>	<i>Moderate drizzle</i>	<i>Partly cloud</i>	<i>Partly cloud</i>	<i>Partly cloud</i>	Southerly 21.6 km/h	<i>Max 24-31 °C</i> <i>Min 15-19 °C</i>
	Kyangwithya West	<10 mm	<i>Partly cloud</i>	<i>Partly cloud</i>	<i>Moderate drizzle</i>	<i>Moderate drizzle</i>	<i>Partly cloud</i>	<i>Partly cloud</i>	<i>Partly cloud</i>	Southerly 21.6 km/h	
	Mulango	<10 mm	<i>Partly cloud</i>	<i>Partly cloud</i>	<i>Moderate drizzle</i>	<i>Moderate drizzle</i>	<i>Partly cloud</i>	<i>Partly cloud</i>	<i>Partly cloud</i>	Southerly 21.6 km/h	
	Township	<10 mm	<i>Partly cloud</i>	<i>Partly cloud</i>	<i>Moderate drizzle</i>	<i>Moderate drizzle</i>	<i>Partly cloud</i>	<i>Partly cloud</i>	<i>Partly cloud</i>	Southerly 21.6 km/h	
	Miambani	<10 mm	<i>Partly cloud</i>	<i>Partly cloud</i>	<i>Moderate drizzle</i>	<i>Moderate drizzle</i>	<i>Partly cloud</i>	<i>Partly cloud</i>	<i>Partly cloud</i>	Southerly 21.6 km/h	

1.2 PART II: FURTHER ADVISORIES

SUMMARY ABOUT THE WEEKLY FORECAST:

Intermittent cool and partly cloudy conditions expected over the County with a chance (66%) of moderate drizzle on Thursday and Friday over several areas.

Maximum temperatures are expected to range from 23°C - 34°C, while minimum temperatures are expected to range from 14°C - 22°C. Strong southerly to south-easterly winds with speeds exceeding 25 knots (12.9 m/s) are expected in most parts of the County. *In light of this weather forecast, farmers are also advised to consult with respective local extension officers from the County Ministry of Agriculture and Livestock at ward level for more advice on the best farm practices.*

Note: 1 mm of rainfall is equivalent to 1 litre of rainfall per square meter.

KEY OF SCIENTIFIC WORDS USED

Rainfall categories	
Range	Category
0.0 mm	Light
5 - 20mm	Moderate
20 - 50mm	Heavy
>50mm	Very heavy

Rainfall coverage	
Term	Meaning
Most Places	Between 66% and 100%
Several Places	Between 33% and 66%
Few Places	Below 33%

Ushauri wa Idara ya Utabiri wa Hali ya Hewa:

Wakulima wanashauriwa kuendelea kuvuna chakula chao na kuianika ipasavyo kwa jua hili kuzuia athari za sumu kuvu na pia kuanza kujitayarisha kwa msimu za Vuli unaotarajiwa mwishoni wa mwezi wa Oktoba (OND 2024).

For further information, please contact:



Daniel M. Mbithi

County Director of Meteorological Services

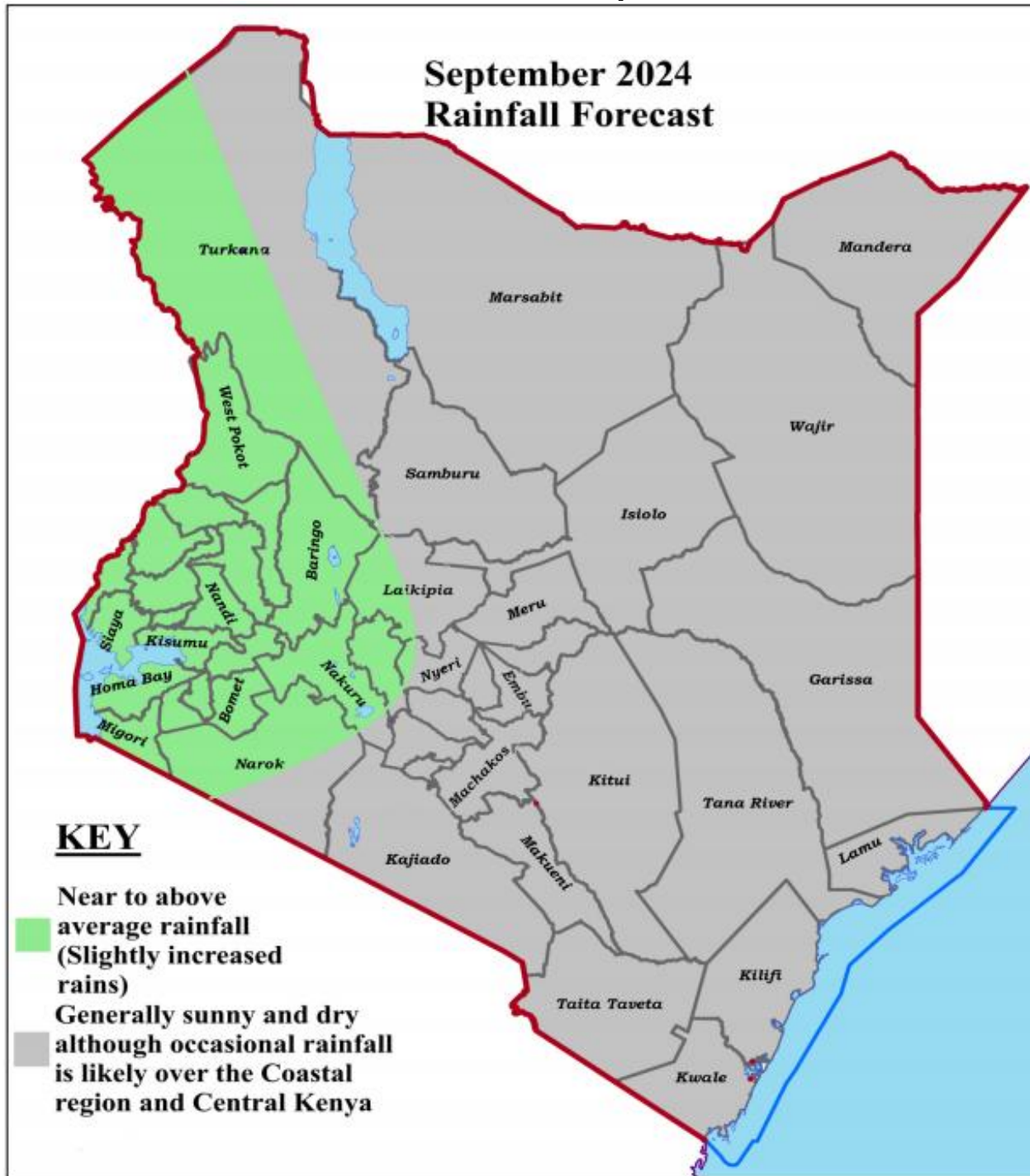
Mobile: 0715255171

Email: mbithi_d@yahoo.com

You can find more information about the climate and weather in Kenya on the KMD website

<http://www.meteo.go.ke/>

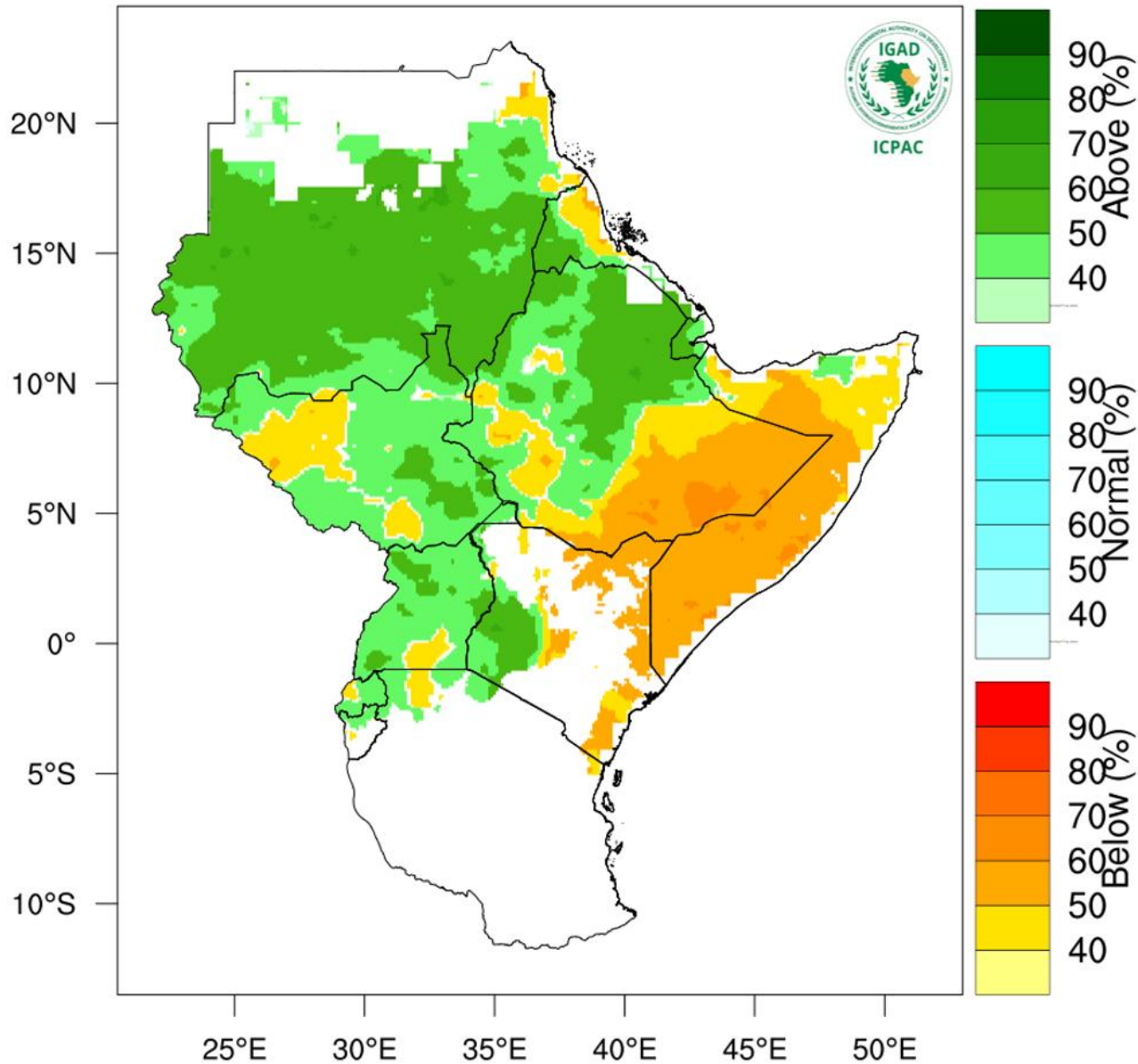
Annex I: Rainfall forecast for the months of September 2024



NB: Near to below normal conditions expected over most parts of the County during September 2024

Annex II: Rainfall forecast for the months of August to October 2024

Rainfall Probabilistic Forecast for Aug - Oct 2024



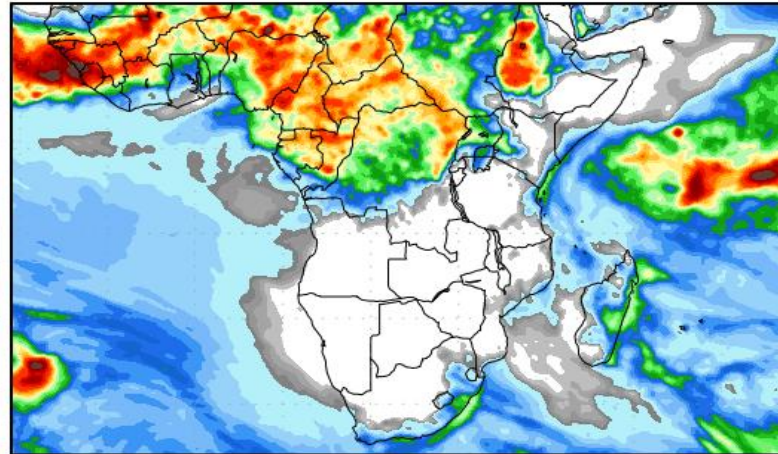
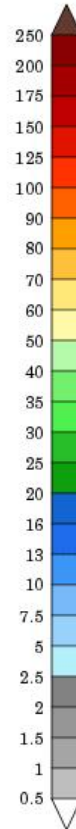
NB: Drier than usual conditions expected over most parts of the County between August and October 2024

Annex II: Rainfall forecast for 2nd to 18th September, 2024

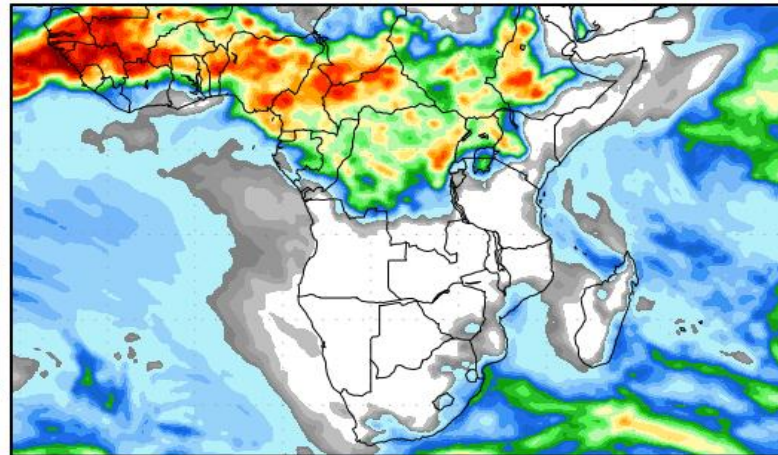
Precipitation Forecasts

Precipitation (mm)
during the period:

???, 02 SEP 2024 at 00Z
-to-
???, 10 SEP 2024 at 00Z

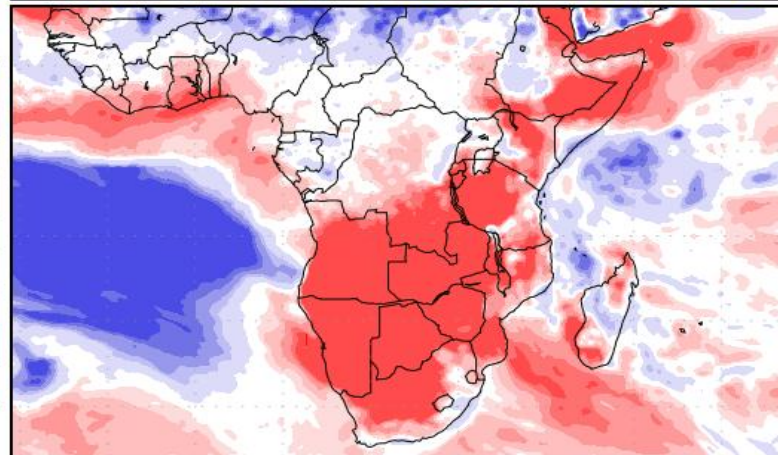
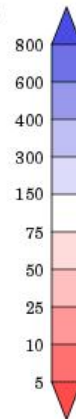


???, 10 SEP 2024 at 00Z
-to-
???, 18 SEP 2024 at 00Z



Precipitation (% of normal)
during the first period:

???, 02 SEP 2024 at 00Z
-to-
???, 10 SEP 2024 at 00Z



NB: Near to below normal conditions expected over several parts of the County between 2nd to 18th September, 2024