



REPUBLIC OF KENYA  
MINISTRY OF ENVIRONMENT AND FORESTRY  
KENYA METEOROLOGICAL DEPARTMENT  
**TAITA TAVETA COUNTY METEOROLOGICAL OFFICE**  
Email: [cdmsttc@gmail.com](mailto:cdmsttc@gmail.com) or [robasira@yahoo.com](mailto:robasira@yahoo.com)  
P.O. BOX 42 80300 VOI

Date ...1 September 2024...

### OCTOBER NOVEMBER DECEMBER 2024 SEASONAL CLIMATE OUTLOOK.

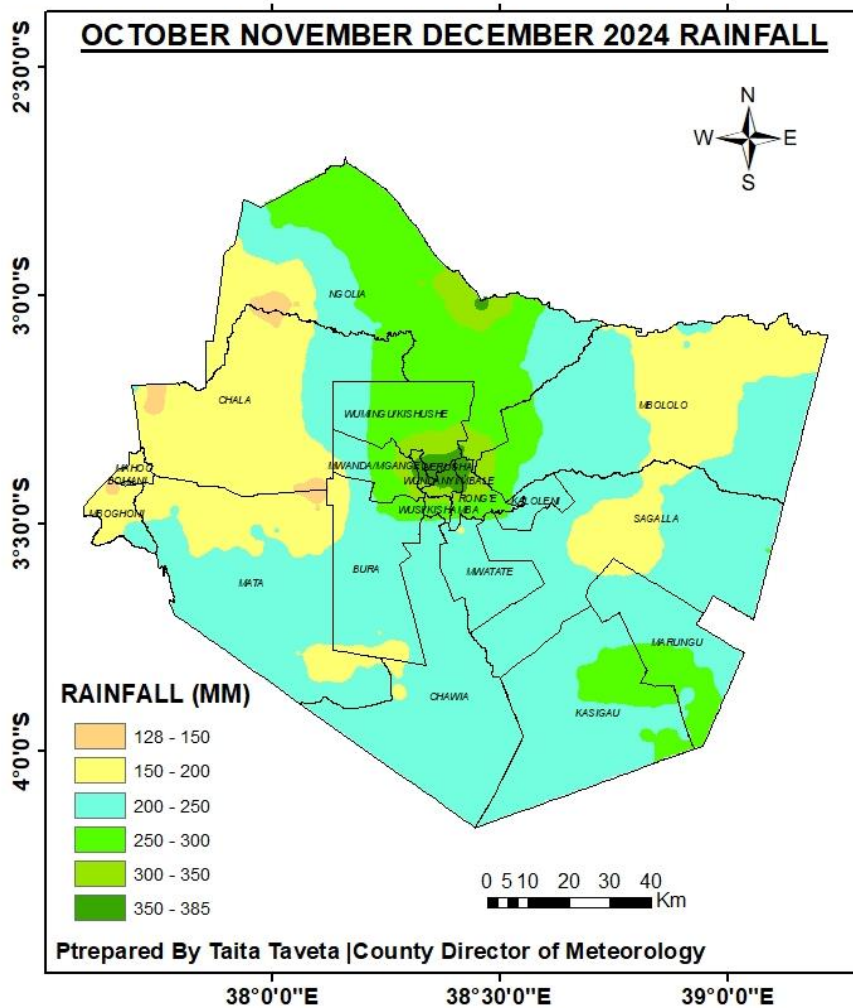


Fig. 1. October November December 2024 Seasonal Rainfall Forecast for Taita Taveta County.

The expected short rains season is likely to be **near normal tending to below normal rainfall** compared to the October November December long term average rainfall for the past thirty years.

**Rainfall Onset** Expected to occur from 1 to 16 November 2024.

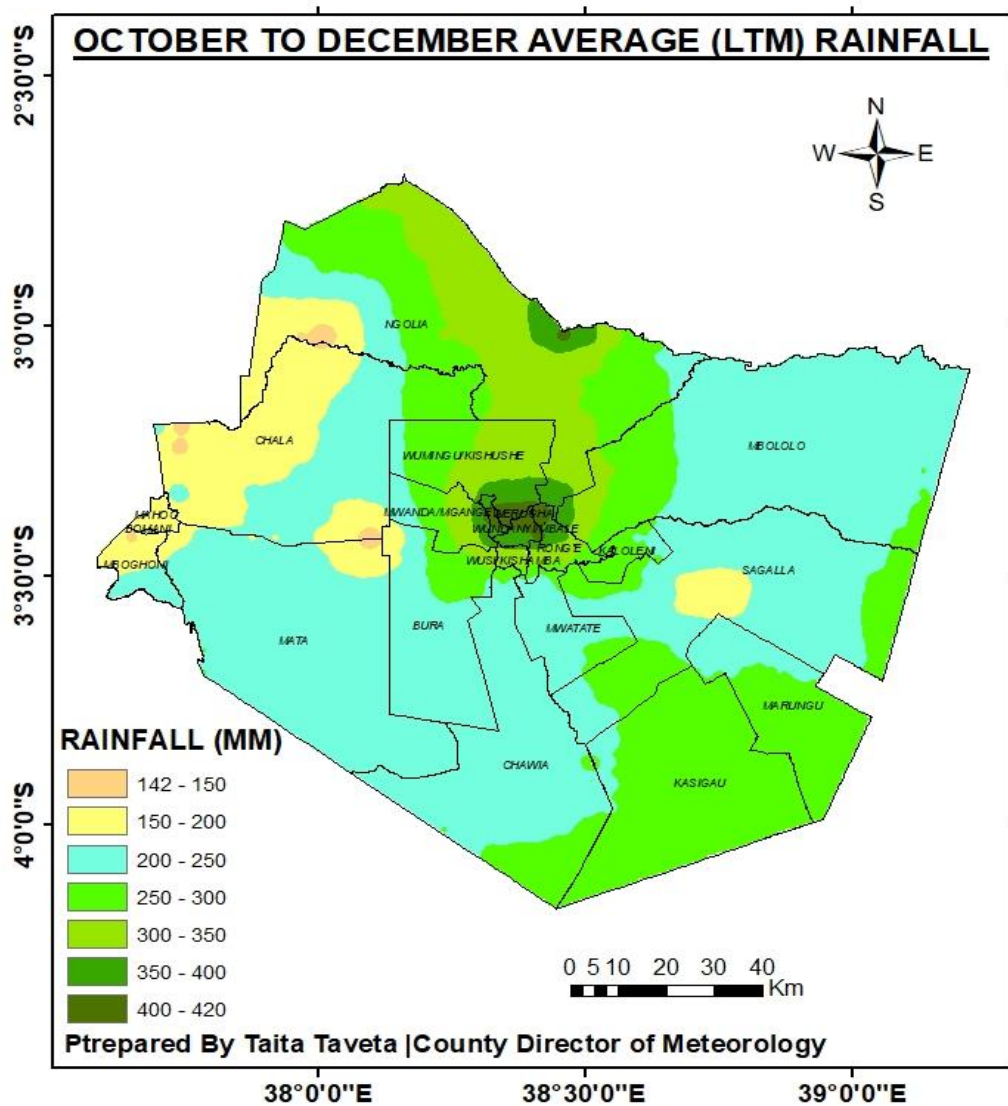
**Peak Rainfall** is likely to occur during the month of November 2024.

**Rainfall Distribution** is likely to be poor both in space and time during the season.  
**Heavy Downpours** occasional heavy rains may occur within the season.  
**End of Rains** Rains are expected to end during the 1 to 14 week of December 2024.  
**Duration of rainfall in season:-** Likely to be just 30 days of rainfall in season.

**Probable Expected rainfall during the season**

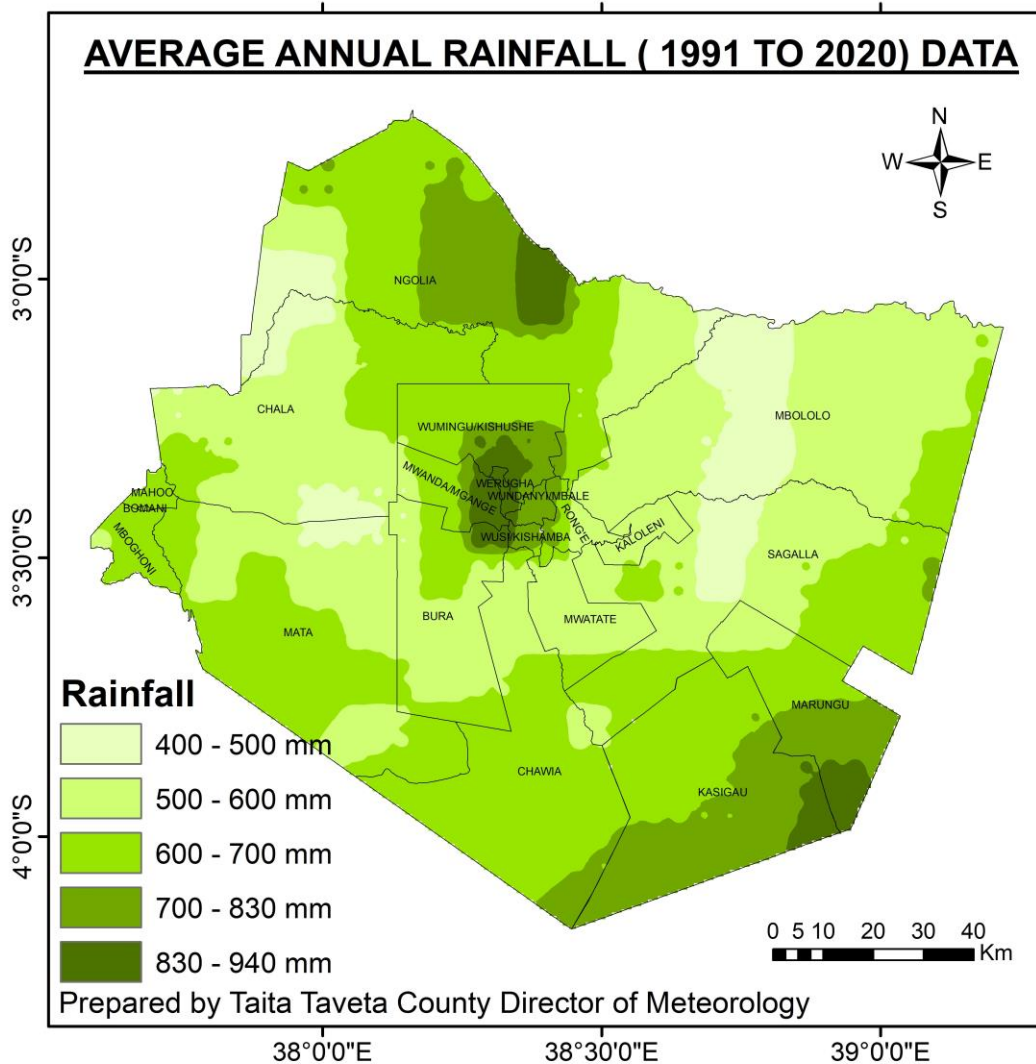
	LONG TERM AVERAGE		EXPECTED RAINFALL OND 2024	
	Lowlands	Highlands	Lowlands	Highlands
Mwatate	150 – 250 mm	250 – 400 mm	150 – 250 mm	250 – 385 mm
Taita	200 – 250 mm	300 – 420 mm	150 – 250 mm	250 – 385 mm
Taveta	142 – 250 mm	N/A	128 – 200 MM	N/A
Voi	150 – 250 mm	250 – 400 mm	150 – 250 mm	250 – 350 mm

**CLIMATOLOGY OR AVERAGE RAINFALL MAP FOR TAITA TAVETA COUNTY**



**Fig.2 shows long term average rainfall over Taita Taveta county.**

The above map shows long term average rainfall within Taita Taveta County. Long term average rainfall is calculated using rainfall data between 1991 to 2020.



**Figure 3** Annual Long Term Average Rainfall. The long term average rainfall is calculated based on rainfall performance from 1991 to 2020.

#### ADVISORIES

**HEALTH:** - Health experts in the county are advised to be on the lookout for possible increase in water borne diseases as a result of stagnant water that may occur in areas prone to flooding.

**INFRASTRUCTURE:** - Occasional heavy rainfall is likely to have negative effect on the infrastructure. The relevant authorities are advised to put in place measures to ensure they minimise damage that may occur due to flash floods.

**AGRICULTURE:** - Farmers are asked to seek advice from the Ministry of Agriculture on the type of farming activities they are supposed to carry out during the short rains season. On farm Soil and water conservation should be practiced.

**LIVESTOCK:** - Livestock farmers are called upon to work closely with experts in the livestock sector on the practices they are to carry out during the short rains season.

**WATER:** - Water harvesting and conservation is encouraged using all methods during the season.

**THUNDERSTORMS:** - During the season heavy thunderstorms may occur. Avoid handling metallic substances, use of mobile phones, taking shelter under trees, walking in running

water, being in open fields, leaning on walls whenever it rains with lightning flashes and thunder.

The seasonal climate outlook should be used in conjunction with updates issued by the Department from time to time in the form of Monthly Forecasts, Weekly Forecasts, 24 hour Forecasts and Alerts. The forecasts can be accessed through local media, sms, whatsapp, facebook, telegraph and the KMD website.

Robinson Asira

County Director of Meteorological Services

Taita Taveta County

Mobile: 0723 465 915

Email :- [cdmsttc@gmail.com](mailto:cdmsttc@gmail.com), [robasira@yahoo.com](mailto:robasira@yahoo.com)

Website :- [www.meteo.go.ke](http://www.meteo.go.ke)

.