



**KENYA  
METEOROLOGICAL  
DEPARTMENT**



INITIATIVE ON  
**Livestock and Climate**

*For further info:*

*Contact: Daniel M. Mbithi*

*Mobile No. 0715255171*

*Email: mbithi\_d@yahoo.com*

**County Director of Meteorological Services Kitui County**

### Weekly Weather forecast for Kitui County

#### 1.1 PART I: WEEKLY FORECAST FOR THE PERIOD 8<sup>th</sup> - 14<sup>th</sup> October 2024 Weather forecast Table

Sub County	Ward	Probable Total weekly amount (mm)	Probable weather							Winds (km/h kilometers per hour)	Temp (Tmax °C & Tmin °C)
			Notes: Light rains <1-5 mm; Moderate rains 5-20 mm; Heavy rains >20 mm; Very heavy rains >50 mm								
			Tue	Wed	Thur	Fri	Sat	Sun	Mon	Weekly	Weekly
Mwingi West	Nguutani	<5 mm	Partly cloud	Partly cloud	Partly cloud	Partly cloud	Light rains	Light rains	Partly cloud	Southerly 18.0 km/h	Max 27-32 °C Min 15-20°C
	Kyome/Thaana	<5 mm	Partly cloud	Partly cloud	Partly cloud	Partly cloud	Light rains	Light rains	Partly cloud	Southerly 21.6 km/h	
	Kiomo/Kyethani	<5 mm	Partly cloud	Partly cloud	Partly cloud	Partly cloud	Light rains	Light rains	Partly cloud	Southerly 21.6 km/h	
	Migwani	<5 mm	Partly cloud	Partly cloud	Partly cloud	Partly cloud	Light rains	Light rains	Partly cloud	Southerly 21.6 km/h	
Mwingi North	Ngomeni	0.0 mm	Partly cloud	Partly cloud	Partly cloud	Partly cloud	Light rains	Light rains	Partly cloud	Southerly 21.6 km/h	Max 30-36 °C Min 18-23 °C
	Kyuso	0.0 mm	Partly cloud	Partly cloud	Partly cloud	Partly cloud	Light rains	Light rains	Partly cloud	Southerly 21.6 km/h	
	Tseikuru	0.0 mm	Partly cloud	Partly cloud	Partly cloud	Partly cloud	Light rains	Light rains	Partly cloud	Southerly 21.6 km/h	
	Tharaka	0.0 mm	Partly cloud	Partly cloud	Partly cloud	Partly cloud	Light rains	Light rains	Partly cloud	Southerly 18.0 km/h	
	Mumoni	0.0 mm	Partly cloud	Partly cloud	Partly cloud	Partly cloud	Light rains	Light rains	Partly cloud	Southerly 21.6 km/h	

Sub County	Ward	Probable Total weekly amount (mm)	Probable weather Notes: Light rains <1-5 mm; Moderate rains 5-20 mm; Heavy rains >20 mm; Very heavy rains >50 mm							Winds (km/h kilometers per hour)	Temp (Tmax °C & Tmin °C)
			Tue	Wed	Thur	Fri	Sat	Sun	Mon	Weekly	Weekly
										km/h	
Mwingi Central	Central	<5 mm	Partly cloud	Partly cloud	Partly cloud	Partly cloud	Light rains	Light rains	Partly cloud	Southerly 21.6 km/h	Max 29-34 °C Min 18-21 °C
	Kivou	<5 mm	Partly cloud	Partly cloud	Partly cloud	Partly cloud	Light rains	Light rains	Partly cloud	Southerly 21.6 km/h	
	Mui	<5 mm	Partly cloud	Partly cloud	Partly cloud	Partly cloud	Light rains	Light rains	Partly cloud	Southerly 18.0 km/h	
	Waita	<5 mm	Partly cloud	Partly cloud	Partly cloud	Partly cloud	Light rains	Light rains	Partly cloud	Southerly 21.6 km/h	
	Nuu	<5 mm	Partly cloud	Partly cloud	Partly cloud	Partly cloud	Light rains	Light rains	Partly cloud	Southerly 21.6 km/h	
	Nguni	<5 mm	Partly cloud	Partly cloud	Partly cloud	Partly cloud	Light rains	Light rains	Partly cloud	Southerly 21.6 km/h	
Kitui South	Ikanga/Kyatune	<5 mm	Partly cloud	Partly cloud	Partly cloud	Partly cloud	Light rains	Light rains	Partly cloud	Southerly 18.0 km/h	Max 30-34 °C Min 18-21 °C
	Mutomo/Kibwea	<5 mm	Partly cloud	Partly cloud	Partly cloud	Partly cloud	Light rains	Light rains	Partly cloud	Southerly 18.0 km/h	
	Kanziko/Simisi	<5 mm	Partly cloud	Partly cloud	Partly cloud	Partly cloud	Light rains	Light rains	Partly cloud	Southerly 21.6 km/h	
	Mutha	<5 mm	Partly cloud	Partly cloud	Partly cloud	Partly cloud	Light rains	Light rains	Partly cloud	Southerly 21.6 km/h	
	Ikutha	<5 mm	Partly cloud	Partly cloud	Partly cloud	Partly cloud	Light rains	Light rains	Partly cloud	Southerly 21.6 km/h	
	Athi	<5 mm	Partly cloud	Partly cloud	Partly cloud	Partly cloud	Light rains	Light rains	Partly cloud	Southerly 18.0 km/h	
Kitui East	Chuluni	<10 mm	Partly cloud	Partly cloud	Partly cloud	Light rains	Light rains	Light rains	Partly cloud	Southerly 18.0 km/h	Max 27-34 °C Min 16-22 °C
	Nzambani	<10 mm	Partly cloud	Partly cloud	Partly cloud	Light rains	Light rains	Light rains	Partly cloud	Southerly 18.0 km/h	
	Mutito/Kaliku	<10 mm	Partly cloud	Partly cloud	Partly cloud	Light rains	Light rains	Light rains	Partly cloud	Southerly 18.0 km/h	
	Zombe/Mwitika	<5 mm	Partly cloud	Partly cloud	Partly cloud	Partly cloud	Light rains	Light rains	Partly cloud	Southerly 18.0 km/h	
	Voo/Kyamatu	<5 mm	Partly cloud	Partly cloud	Partly cloud	Partly cloud	Light rains	Light rains	Partly cloud	Southerly 18.0 km/h	
	Endau/Malalani	<5 mm	Partly cloud	Partly cloud	Partly cloud	Partly cloud	Light rains	Light rains	Partly cloud	Southerly 21.6 km/h	
Kitui Rural	Mbitini	<5 mm	Partly cloud	Partly cloud	Partly cloud	Partly cloud	Light rains	Light rains	Partly cloud	Southerly 18.0 km/h	Max 28-32 °C

Sub County	Ward	Probable Total weekly amount (mm)	Probable weather Notes: Light rains <1-5 mm; Moderate rains 5-20 mm; Heavy rains >20 mm; Very heavy rains >50 mm							Winds (km/h kilometers per hour)	Temp (Tmax °C & Tmin °C)
			Tue	Wed	Thur	Fri	Sat	Sun	Mon		
	Kisasi	<5 mm	<i>Partly cloud</i>	<i>Partly cloud</i>	<i>Partly cloud</i>	<i>Partly cloud</i>	<i>Light rains</i>	<i>Light rains</i>	<i>Partly cloud</i>	Southerly 18.0 km/h	<i>Min 16-19 °C</i>
	Kanyangi	<5 mm	<i>Partly cloud</i>	<i>Partly cloud</i>	<i>Partly cloud</i>	<i>Partly cloud</i>	<i>Light rains</i>	<i>Light rains</i>	<i>Partly cloud</i>	Southerly 18.0 km/h	
	Yatta/Kwa Vonza	<5 mm	<i>Partly cloud</i>	<i>Partly cloud</i>	<i>Partly cloud</i>	<i>Partly cloud</i>	<i>Light rains</i>	<i>Light rains</i>	<i>Partly cloud</i>	Southerly 18.0 km/h	
Kitui West	Kauwi	<10 mm	<i>Partly cloud</i>	<i>Partly cloud</i>	<i>Partly cloud</i>	<i>Light rains</i>	<i>Light rains</i>	<i>Light rains</i>	<i>Partly cloud</i>	Southerly 18.0 km/h	<i>Max 25-28 °C</i> <i>Min 15-18 °C</i>
	Mutonguni	<10 mm	<i>Partly cloud</i>	<i>Partly cloud</i>	<i>Partly cloud</i>	<i>Light rains</i>	<i>Light rains</i>	<i>Light rains</i>	<i>Partly cloud</i>	Southerly 18.0 km/h	
	Matinyani	<10 mm	<i>Partly cloud</i>	<i>Partly cloud</i>	<i>Partly cloud</i>	<i>Light rains</i>	<i>Light rains</i>	<i>Light rains</i>	<i>Partly cloud</i>	Southerly 18.0 km/h	
	Kwa Mutonga/Kithumula	<10 mm	<i>Partly cloud</i>	<i>Partly cloud</i>	<i>Partly cloud</i>	<i>Light rains</i>	<i>Light rains</i>	<i>Light rains</i>	<i>Partly cloud</i>	Southerly 18.0 km/h	
Kitui Central	Kyangwithya East	<10 mm	<i>Partly cloud</i>	<i>Partly cloud</i>	<i>Partly cloud</i>	<i>Light rains</i>	<i>Light rains</i>	<i>Light rains</i>	<i>Partly cloud</i>	Southerly 18.0 km/h	<i>Max 27-32 °C</i> <i>Min 15-20 °C</i>
	Kyangwithya West	<10 mm	<i>Partly cloud</i>	<i>Partly cloud</i>	<i>Partly cloud</i>	<i>Light rains</i>	<i>Light rains</i>	<i>Light rains</i>	<i>Partly cloud</i>	Southerly 18.0 km/h	
	Mulango	<10 mm	<i>Partly cloud</i>	<i>Partly cloud</i>	<i>Partly cloud</i>	<i>Light rains</i>	<i>Light rains</i>	<i>Light rains</i>	<i>Partly cloud</i>	Southerly 18.0 km/h	
	Township	<10 mm	<i>Partly cloud</i>	<i>Partly cloud</i>	<i>Partly cloud</i>	<i>Light rains</i>	<i>Light rains</i>	<i>Light rains</i>	<i>Partly cloud</i>	Southerly 18.0 km/h	
	Miambani	<10 mm	<i>Partly cloud</i>	<i>Partly cloud</i>	<i>Partly cloud</i>	<i>Light rains</i>	<i>Light rains</i>	<i>Light rains</i>	<i>Partly cloud</i>	Southerly 18.0 km/h	

## 1.2 PART II: FURTHER ADVISORIES

### **SUMMARY ABOUT THE WEEKLY FORECAST:**

Sunny intervals are expected during the day while nights are likely to be partly cloudy. However, there is a possibility of morning rains and afternoon showers occurring over several places during the last days of the forecast period.

Maximum temperatures are expected to range from 25°C - 36°C, while minimum temperatures are expected to range from 15°C - 23°C. Strong southerly to south-easterly winds with speeds exceeding 25 knots (12.9 m/s) are expected in most parts of the County. *In light of this weather forecast, farmers are also advised to consult with respective local extension officers from the County Ministry of Agriculture and Livestock at ward level for more advice on the best farm practices.*

**Note: 1 mm of rainfall is equivalent to 1 litre of rainfall per square meter.**

#### KEY OF SCIENTIFIC WORDS USED

Rainfall categories	
Range	Category
0.0 mm	Light
5 - 20mm	Moderate
20 - 50mm	Heavy
>50mm	Very heavy

Rainfall coverage	
Term	Meaning
Most Places	Between 66% and 100%
Several Places	Between 33% and 66%
Few Places	Below 33%

**Ushauri wa Idara ya Utabiri wa Hali ya Hewa:**  
Wakulima wanashauriwa kuendelea kujitayarisha kwa msimu za Vuli unaotarajiwa mwishoni mwa mwezi huu wa Oktoba (OND 2024).

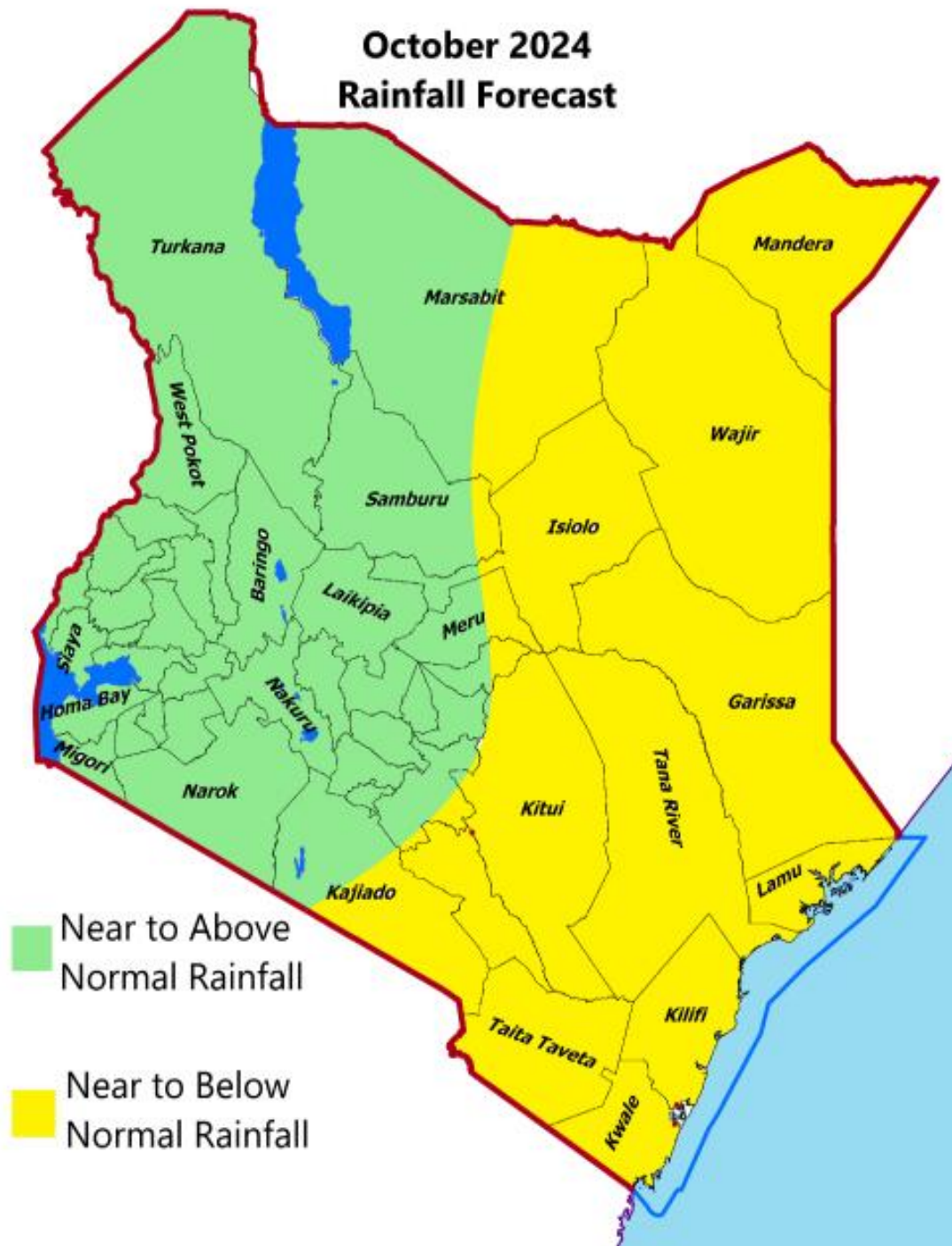
**For further information, please contact:**



Daniel M. Mbithi  
County Director of Meteorological Services  
Mobile: 0715255171  
Email: [mbithi\\_d@yahoo.com](mailto:mbithi_d@yahoo.com)

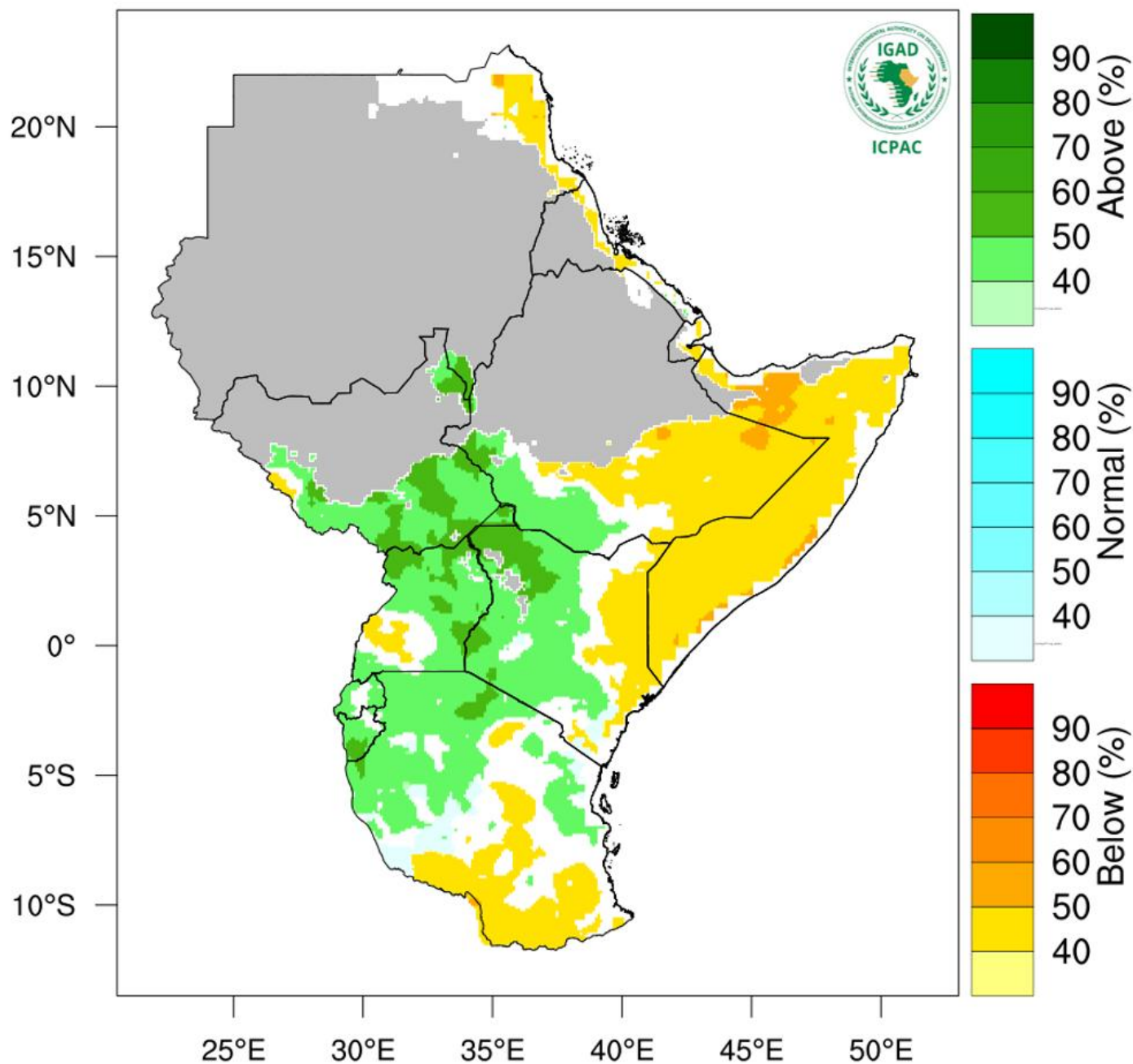
**You can find more information about the climate and weather in Kenya on the KMD website**  
<http://www.meteo.go.ke/>

# Annex I: Rainfall forecast for the month of October 2024



*NB: Near to below normal conditions expected over most parts of the County during October 2024*

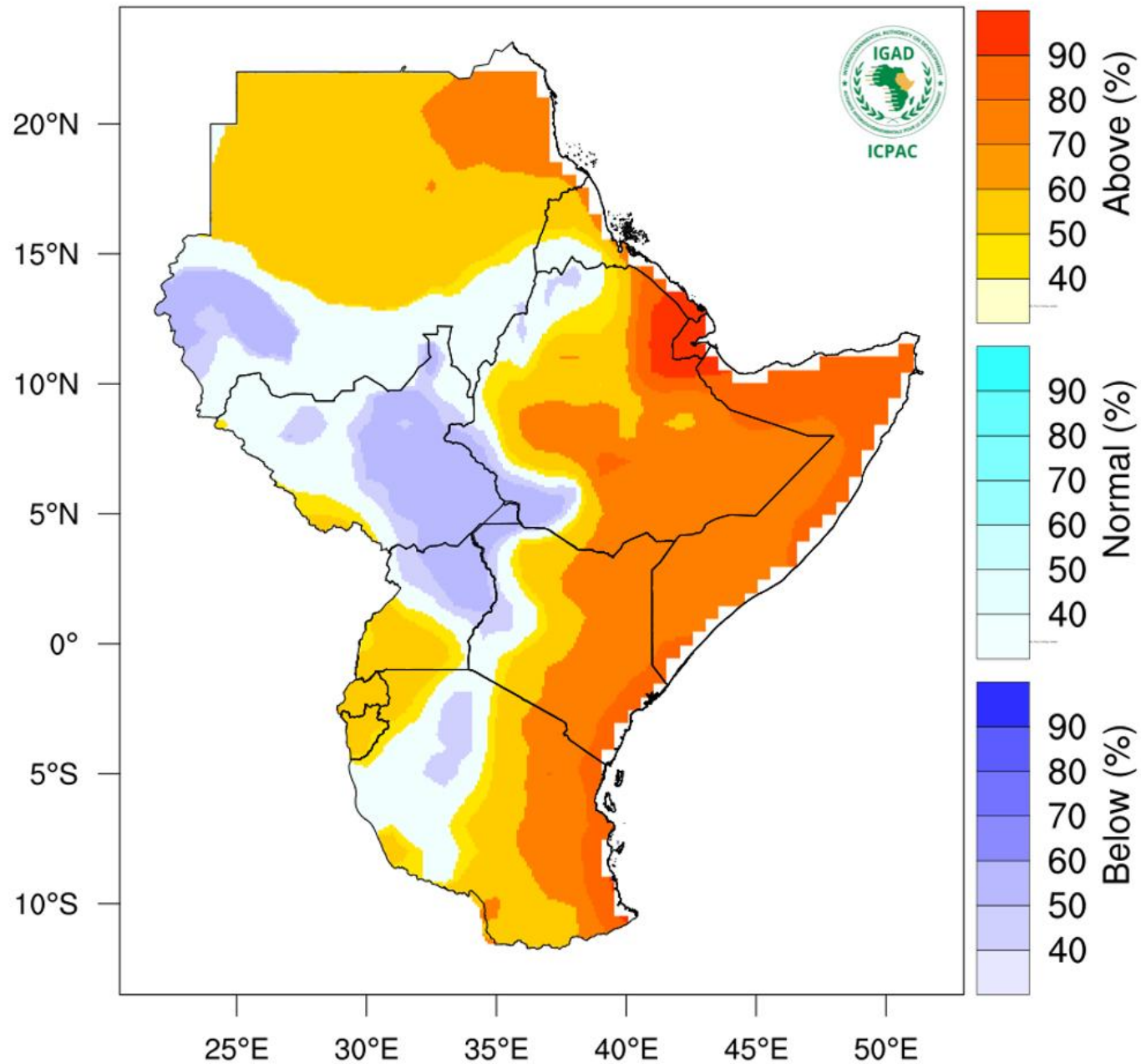
# Rainfall Forecast for Oct - Dec 2024\_Update



*NB: Drier than usual conditions expected over most parts of the County between October and December 2024*

Annex III: Temperature forecast for the months of October to December 2024

# Temperature Probabilistic Forecast for Oct-Dec 2024\_Upd



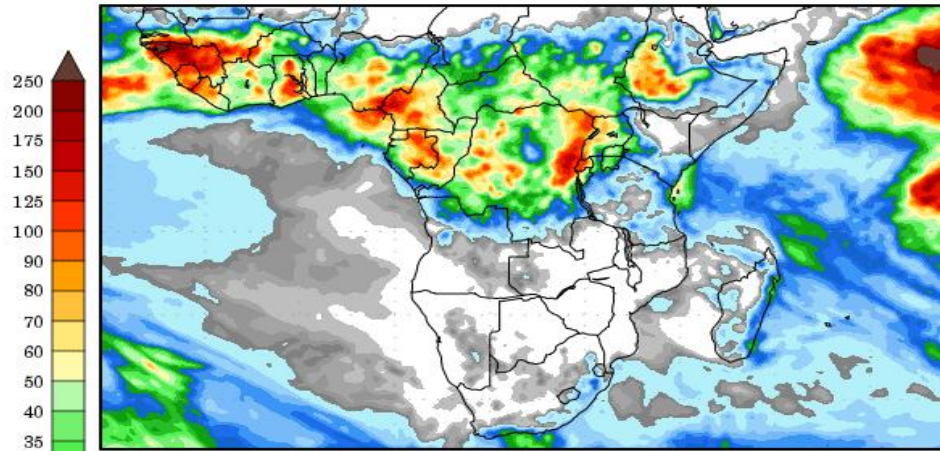
NB: Warmer than usual conditions indicated over most parts of Kitui County between October and December 2024

# Annex IV: Rainfall forecast for 7<sup>th</sup> to 23<sup>rd</sup> October, 2024

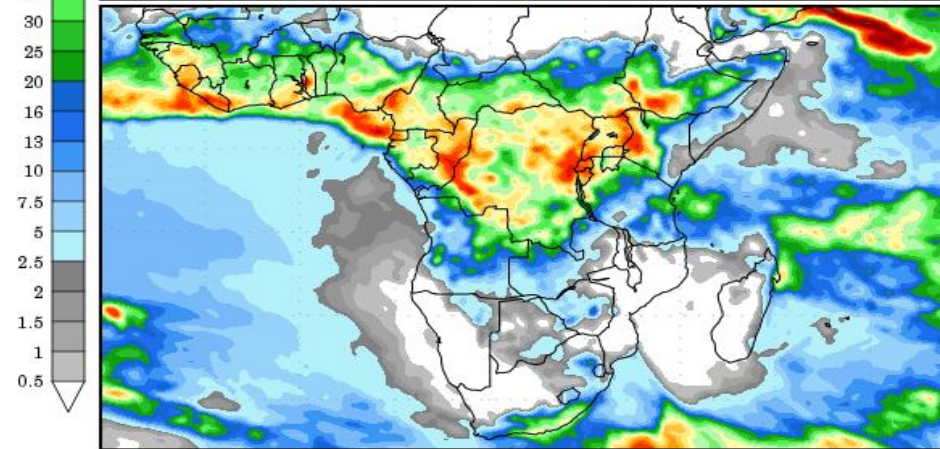
## Precipitation Forecasts

Precipitation (mm)  
during the period:

???, 07 OCT 2024 at 00Z  
-to-  
???, 15 OCT 2024 at 00Z

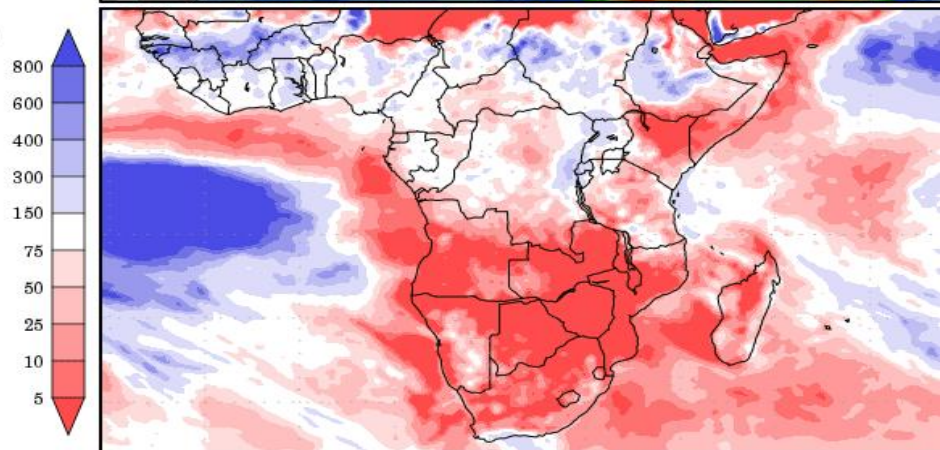


???, 15 OCT 2024 at 00Z  
-to-  
???, 23 OCT 2024 at 00Z



Precipitation (% of normal)  
during the first period:

???, 07 OCT 2024 at 00Z  
-to-  
???, 15 OCT 2024 at 00Z



NB: Near to below normal conditions expected over several parts of the County between 7<sup>th</sup> to 23<sup>rd</sup> October, 2024