

REPUBLIC OF KENYA
MINISTRY OF ENVIRONMENT, CLIMATE CHANGE and FORESTRY
METEOROLOGICAL DEPARTMENT COUNTY METEOROLOGICAL SERVICE OF THARAKANITHI
P. O. Box 493 Chuka , Kenya.
Phone : 0729287479
E-mail: nthuni@gmail.com

THARAKANITHI OCTOBER,NOVEMBER,DECEMBER 2024 SEASONAL FORECAST

OND 2024 RAINFALL SEASONAL SUMMARY OVER THARAKANITHI COUNTY

OND 2024 Rainfall	Onset	Cessation	Distribution
	3 rd to 4 th week of October	1 st to 2 nd week of December	Poor Distribution both in time and space
Amount	Normal (540-700mm)	Near Normal (380-540mm)	Depressed Below 380m

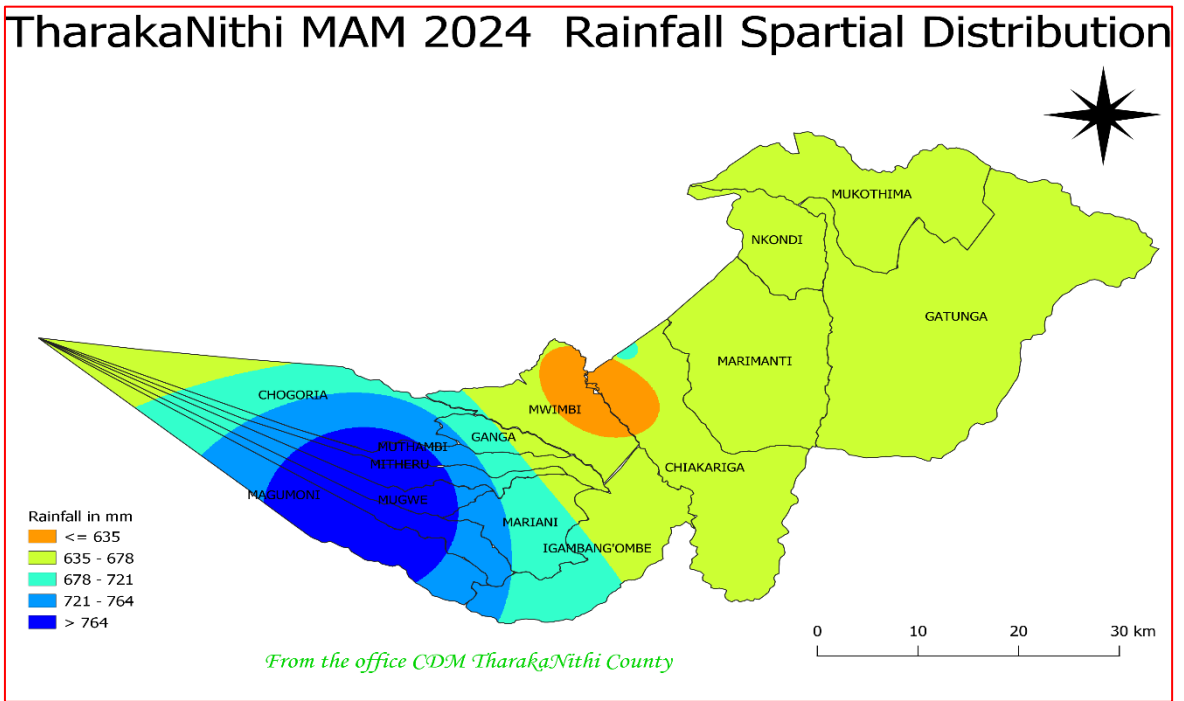
Definition of Terms

- **Long Term Mean** _ Average rainfall for Over 30yrs (1990-2020)
- **MAM** – Long rain season , March ,April and May
- **OND** –Short rain season, October ,November and December
- **Above** Normal Rainfall (AN) > 125% of LTM
- **Normal** Rainfall (N) Between 75%-125% of LTM
- **Below** Normal (BN) < 75% of LTM

REVIEW OF MAM RAINFALL 2024

- The MAM 2024 “Long Rains” performance was Above Normal over several parts of county.
- The distribution of the rainfall in time and space was generally fair over several areas
- Rainfall reached peak during the month of April.
- The onset occurred in the 4th week of March.
- The cessation occurred on in fourth week of May.
- The season was short and heavy

MARCH-MAY 2024 RAINFALL SPATIAL DISTRIBUTION



MAM rainfall Distribution was good over most parts of Meru County .The areas in upper parts of Mara and Chuka received highest amount of rainfall exceeding 600mm and all other areas recorded over 500mm of rainfall therefore the rains were enhanced every where in the County.

REMARKS ON MAM 2024

- The season was short therefore affected the growth of maize crops over some areas (From MoA, NDMA Reports)
- MAM season was characterized with storms which caused flooding over some parts of county (from NGO, Reports)
- MAM season recharged streams and rivers (from WRM)
- MAM rainfall caused damage on farm and road infrastructure in the county (from MoA)

October- November December 2024 Rainfall Outlook



Kenya
Meteorological
Department

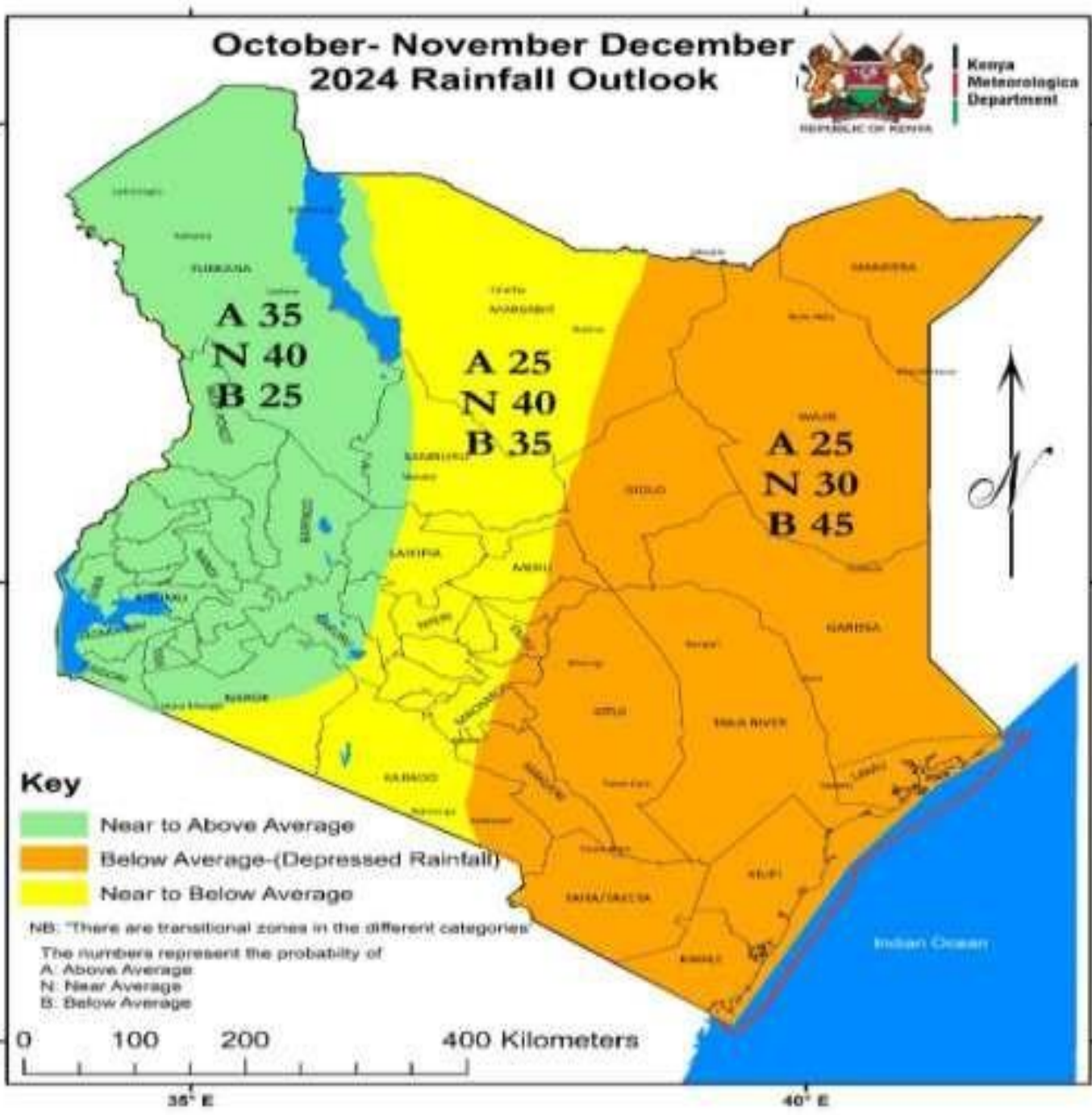


Figure 2: OND 2024 Rainfall Outlook

OND FORECAST 2024 HIGHLIGHTS OVER THARAKANITHI COUNTY

- The OND 2024 rainy season is expected to be Near normal to below Normal in differences parts of county with late onset 3rd to 4th week of October
- poor distribution in time and space.
- The reasons for below normal rainfall and late onset are:
 - (a) Cooling of sea surface temperatures in the Pacific Ocean (La-Nina conditions)
 - (b) Normal sea surface temperatures in the Indian Ocean (Neutral Indian Ocean Dipole (IOD)).
- The rain are expected to Stop 1st to 2nd second week of December 2024

Rainfall Distribution By Wards OND 2024 Season

The distribution of rainfall during OND season 2024 is expected to be poor and characterized by long dry spell in between however storm may be experienced within the season classifying rainfall into three category we have the following categories Normal, Near Normal and Below Normal

(i) The follow wards are expected to receive Normal rainfall during the OND season (540-700mm)

- Chongoria,
- Upper parts of Mitheru, Magumoni, Mwimbi, Muthambi
- Part of Mukothima and Nkondi

(ii) These are ward expected to receive near Normal to below Normal (380-540mm)

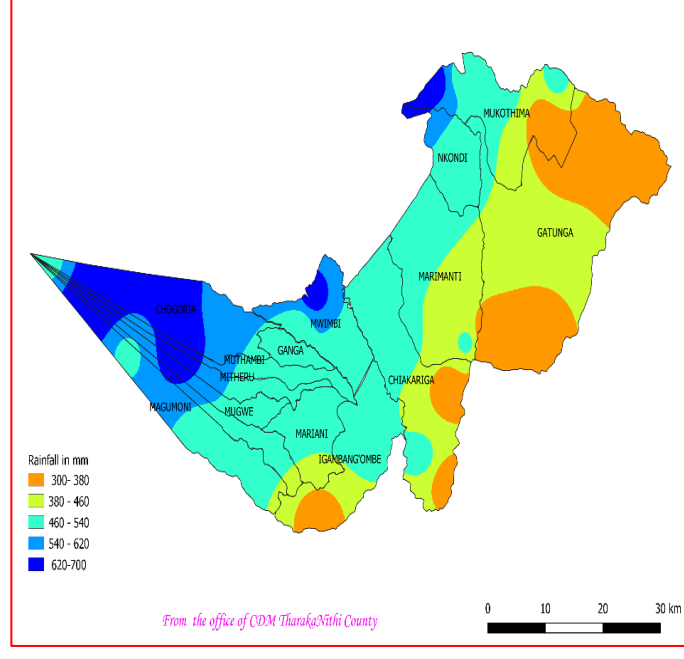
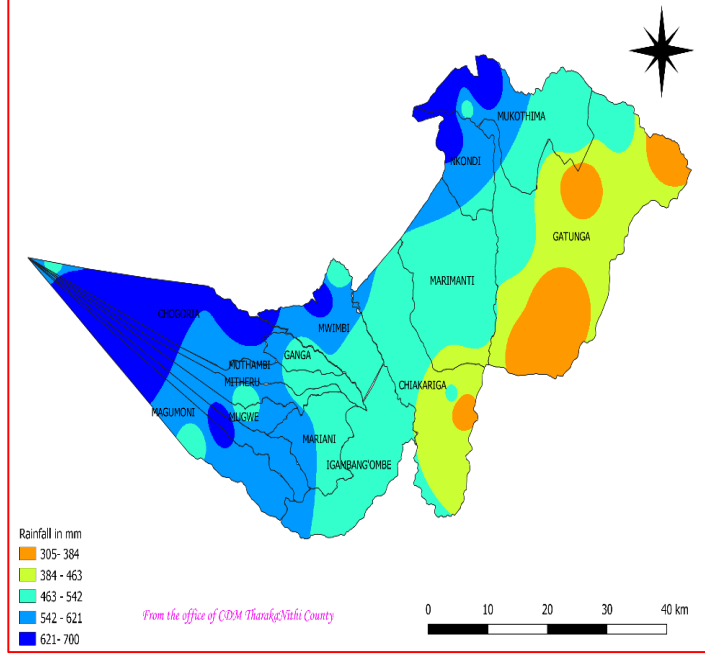
- Lower parts of Magumoni, Mitheru, Mwmbi, Muthambi and Nkondi
- Mugwe and Ganga
- Upper parts of Mariani, Igambangombe, Chiakariga, Marimanti, Mukothima and Gatunga

(iii) The following wards are expected to receive Depressed rainfall of below 380mm

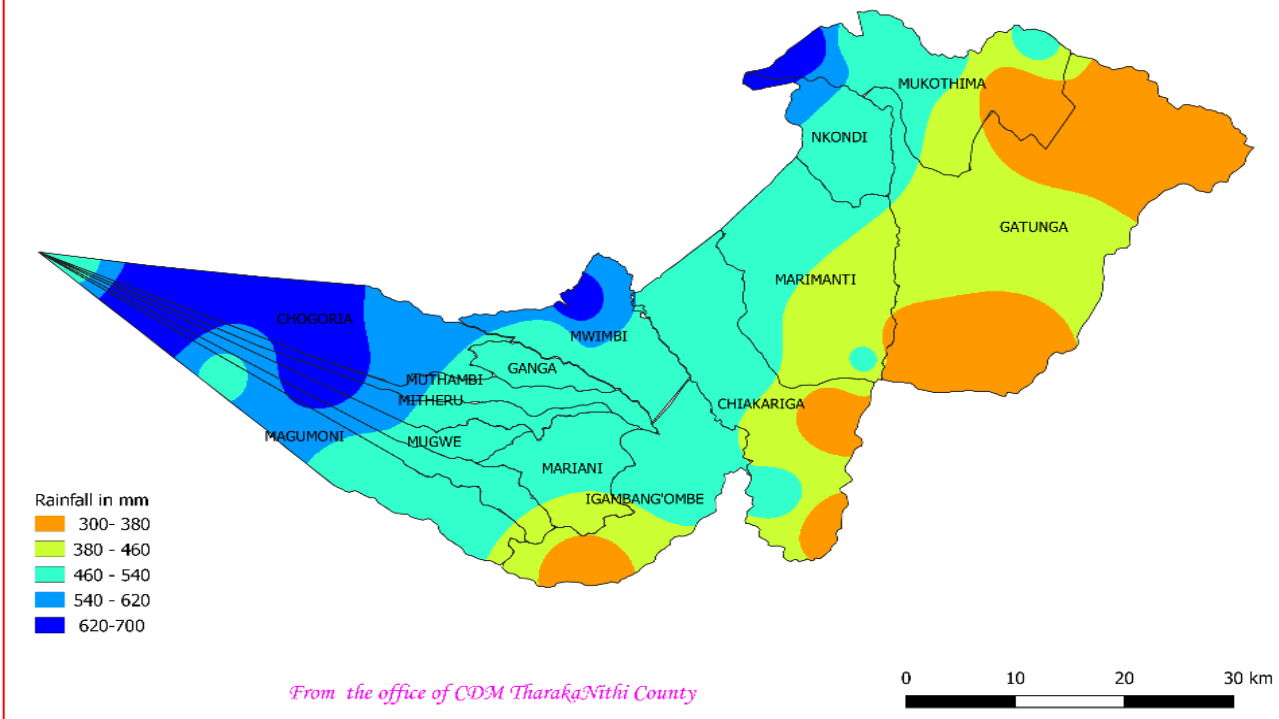
- Lower parts of Mukothima, Chiakariga, Marimanti, Igambangombe and Gatunga

THARAKANITHI OCTOBER -DECEMBER RAINFALL LONG TERM MEAN

THARAKANITHI OCTOBER -DECEMBER 2024 RAINFALL OUTLOOK



THARAKANITHI OCTOBER -DECEMBER 2024 RAINFALL OUTLOOK



IMPACTS OF OND RAINFALL 2024 ON AGRICULTURE

- Reduced seasonal rainfall amounts, late onset, early cessation and poor distribution is likely to negatively affect agricultural production especially lower zones.
- Farmers are encouraged to adopt climate smart technologies, innovations and management practices: Choice of drought tolerant and fast maturing varieties; adopting Conservation Agriculture (minimal or zero tillage, mulching, inclusion of cover crops); on-farm rainwater harvesting, among others.

Agriculture and livestock extension officers called upon to advice Farmers appropriate variety and type of crops to plant.

ENVIRONMENT AND NATURAL RESOURCES

- Cases of deforestation and vegetation degradation are expected to increase as people look for alternative livelihoods especially in the lower zones with depressed rainfall.
- Measures should be put in place to improve on drought support and alternative livelihoods.

WATER, IRRIGATION AND SANITATION

- Availability of water for general and domestic use in dams and water pans expected to reduce. Participatory watershed management should be embraced to reduce conflicts from those in irrigated farming.
- *Residents urged to enhance rain water harvesting both on roof catchment and surface runoff.*
- *Those living upstream of water sources advised to enhance soil conservation to*
- *reduce siltation of dams and water pans.*

DISASTER MANAGEMENT SECTOR

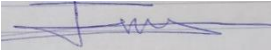
- Reduced seasonal rainfall amounts, late onset, early cessation and poor distribution is likely to negatively affect agricultural production especially lower zones.
- Farmers encouraged to adopt climate smart technologies, innovations and management practices: Choice of drought tolerant and fast maturing varieties; adopting Conservation Agriculture (minimal or zero tillage, mulching, inclusion of cover crops); on-farm rainwater harvesting, among others.

HEALTH SECTOR

- Diseases associated with lack of proper nutrition and poor hygiene due to scarcity of food and water are likely to increase in lower zones.
- The rapid vulnerability assessment should be carried out as well as provide food relief and food supplements to the most vulnerable population respectively.

NB: This outlook should be used together with the 24-hour, 5-day, 7day, monthly, special forecasts and regular updates/advisories issued by this Department as well as Weekly and

Sign

A rectangular box containing a handwritten signature in blue ink. The signature appears to be 'Justin M Nthuni'.

JUSTIN M NTHUNI

**COUNTY DIRECTOR METEOROLOGICAL SERVICES,
MERU COUNTY**