



*For further info:*  
*Contact: Daniel M. Mbithi*  
*Mobile No. 0715255171*  
*Email: mbithi\_d@yahoo.com*  
 County Director of Meteorological Services Kitui County

### Weekly Weather forecast for Kitui County

#### 1.1 PART I: WEEKLY FORECAST FOR THE PERIOD 21<sup>st</sup> to 27<sup>th</sup> Jan 2025 Weather forecast Table

Sub County	Ward	Probable Total weekly amount (mm)	Probable weather							Winds (km/h kilometers per hour)	Temp (Tmax °C & Tmin °C)
			Notes: Light rains <1-5 mm; Moderate rains 5-20 mm; Heavy rains <5 mm; Very heavy rains >50 mm								
			Tue	Wed	Thur	Fri	Sat	Sun	Mon		
Mwingi West	Nguutani	0.0mm	No rain	No rain	No rain	No rain	No rain	No rain	No rain	Easterly 21.6 km/h	Max 28-34 °C Min 16-21 °C
	Kyome/Thaana	0.0mm	No rain	No rain	No rain	No rain	No rain	No rain	No rain	Easterly 18.0 km/h	
	Kiomo/Kyethani	0.0mm	No rain	No rain	No rain	No rain	No rain	No rain	No rain	Easterly 18.0 km/h	
	Migwani	0.0mm	No rain	No rain	No rain	No rain	No rain	No rain	No rain	Easterly 18.0 km/h	
Mwingi North	Ngomeni	0.0mm	No rain	No rain	No rain	No rain	No rain	No rain	No rain	Easterly 18.0 km/h	Max 31-35 °C Min 19-23 °C
	Kyuso	0.0mm	No rain	No rain	No rain	No rain	No rain	No rain	No rain	Easterly 18.0 km/h	
	Tseikuru	0.0mm	No rain	No rain	No rain	No rain	No rain	No rain	No rain	Easterly 18.0 km/h	
	Tharaka	0.0mm	No rain	No rain	No rain	No rain	No rain	No rain	No rain	Easterly 14.4 km/h	
	Mumoni	0.0mm	No rain	No rain	No rain	No rain	No rain	No rain	No rain	Easterly 18.0 km/h	

Sub County	Ward	Probable Total weekly amount (mm)	Probable weather Notes: Light rains <1-5 mm; Moderate rains 5-20 mm; Heavy rains <5 mm; Very heavy rains >50 mm							Winds (km/h kilometers per hour)	Temp (Tmax °C & Tmin °C)	
			Tue	Wed	Thur	Fri	Sat	Sun	Mon			Weekly
Mwingi Central	Central	0.0mm	No rain	No rain	No rain	No rain	No rain	No rain	No rain	No rain	Easterly 18.0 km/h	Max 31-35°C Min 19-22 °C
	Kivou	0.0mm	No rain	No rain	No rain	No rain	No rain	No rain	No rain	No rain	Easterly 18.0 km/h	
	Mui	0.0mm	No rain	No rain	No rain	No rain	No rain	No rain	No rain	No rain	Easterly 18.0 km/h	
	Waita	0.0mm	No rain	No rain	No rain	No rain	No rain	No rain	No rain	No rain	Easterly 18.0 km/h	
	Nuu	0.0mm	No rain	No rain	No rain	No rain	No rain	No rain	No rain	No rain	Easterly 18.0 km/h	
	Nguni	0.0mm	No rain	No rain	No rain	No rain	No rain	No rain	No rain	No rain	Easterly 18.0 km/h	
Kitui South	Ikanga/Kyatune	0.0mm	No rain	No rain	No rain	No rain	No rain	No rain	No rain	No rain	Easterly 18.0 km/h	Max 30-35 °C Min 18-21 °C
	Mutomo/Kibwea	0.0mm	No rain	No rain	No rain	No rain	No rain	No rain	No rain	No rain	Easterly 18.0 km/h	
	Kanziko/Simisi	0.0mm	No rain	No rain	No rain	No rain	No rain	No rain	No rain	No rain	Easterly 18.0 km/h	
	Mutha	0.0mm	No rain	No rain	No rain	No rain	No rain	No rain	No rain	No rain	Easterly 18.0 km/h	
	Ikutha	0.0mm	No rain	No rain	No rain	No rain	No rain	No rain	No rain	No rain	Easterly 18.0 km/h	
	Athi	0.0mm	No rain	No rain	No rain	No rain	No rain	No rain	No rain	No rain	Easterly 18.0 km/h	
Kitui East	Chuluni	0.0mm	No rain	No rain	No rain	No rain	No rain	No rain	No rain	No rain	Easterly 18.0 km/h	Max 30-35 °C Min 17-22 °C
	Nzambani	0.0mm	No rain	No rain	No rain	No rain	No rain	No rain	No rain	No rain	Easterly 18.0 km/h	
	Mutito/Kaliku	0.0mm	No rain	No rain	No rain	No rain	No rain	No rain	No rain	No rain	Easterly 14.4 km/h	
	Zombe/Mwitika	0.0mm	No rain	No rain	No rain	No rain	No rain	No rain	No rain	No rain	Easterly 14.4 km/h	
	Voo/Kyamatu	0.0mm	No rain	No rain	No rain	No rain	No rain	No rain	No rain	No rain	Easterly 18.0 km/h	
	Endau/Malalani	0.0mm	No rain	No rain	No rain	No rain	No rain	No rain	No rain	No rain	Easterly 18.0 km/h	
Kitui Rural	Mbitini	0.0mm	No rain	No rain	No rain	No rain	No rain	No rain	No rain	No rain	Easterly 18.0 km/h	Max 30-32 °C

Sub County	Ward	Probable Total weekly amount (mm)	Probable weather							Winds (km/h kilometers per hour)	Temp (Tmax °C & Tmin °C)
			Notes: Light rains <1-5 mm; Moderate rains 5-20 mm; Heavy rains <5 mm; Very heavy rains >50 mm								
			Tue	Wed	Thur	Fri	Sat	Sun	Mon		
	Kisasi	0.0mm	No rain	No rain	No rain	No rain	No rain	No rain	No rain	Easterly 18.0 km/h	Min 17-20 °C
	Kanyangi	0.0mm	No rain	No rain	No rain	No rain	No rain	No rain	No rain	Easterly 18.0 km/h	
	Yatta/Kwa Vonza	0.0mm	No rain	No rain	No rain	No rain	No rain	No rain	No rain	Easterly 18.0 km/h	
Kitui West	Kauwi	0.0mm	No rain	No rain	No rain	No rain	No rain	No rain	No rain	Easterly 18.0 km/h	Max 27-32 °C Min 16-19 °C
	Mutonguni	0.0mm	No rain	No rain	No rain	No rain	No rain	No rain	No rain	Easterly 18.0 km/h	
	Matinyani	0.0mm	No rain	No rain	No rain	No rain	No rain	No rain	No rain	Easterly 18.0 km/h	
	Kwa Mutonga/Kithumula	0.0mm	No rain	No rain	No rain	No rain	No rain	No rain	No rain	Easterly 18.0 km/h	
Kitui Central	Kyangwithya East	0.0mm	No rain	No rain	No rain	No rain	No rain	No rain	No rain	Easterly 18.0 km/h	Max 28-32 °C Min 17-23 °C
	Kyangwithya West	0.0mm	No rain	No rain	No rain	No rain	No rain	No rain	No rain	Easterly 18.0 km/h	
	Township	0.0mm	No rain	No rain	No rain	No rain	No rain	No rain	No rain	Easterly 18.0 km/h	
	Mulango	0.0mm	No rain	No rain	No rain	No rain	No rain	No rain	No rain	Easterly 18.0 km/h	
	Miambani	0.0mm	No rain	No rain	No rain	No rain	No rain	No rain	No rain	Easterly 18.0 km/h	

## 1.2 Review for December 2024

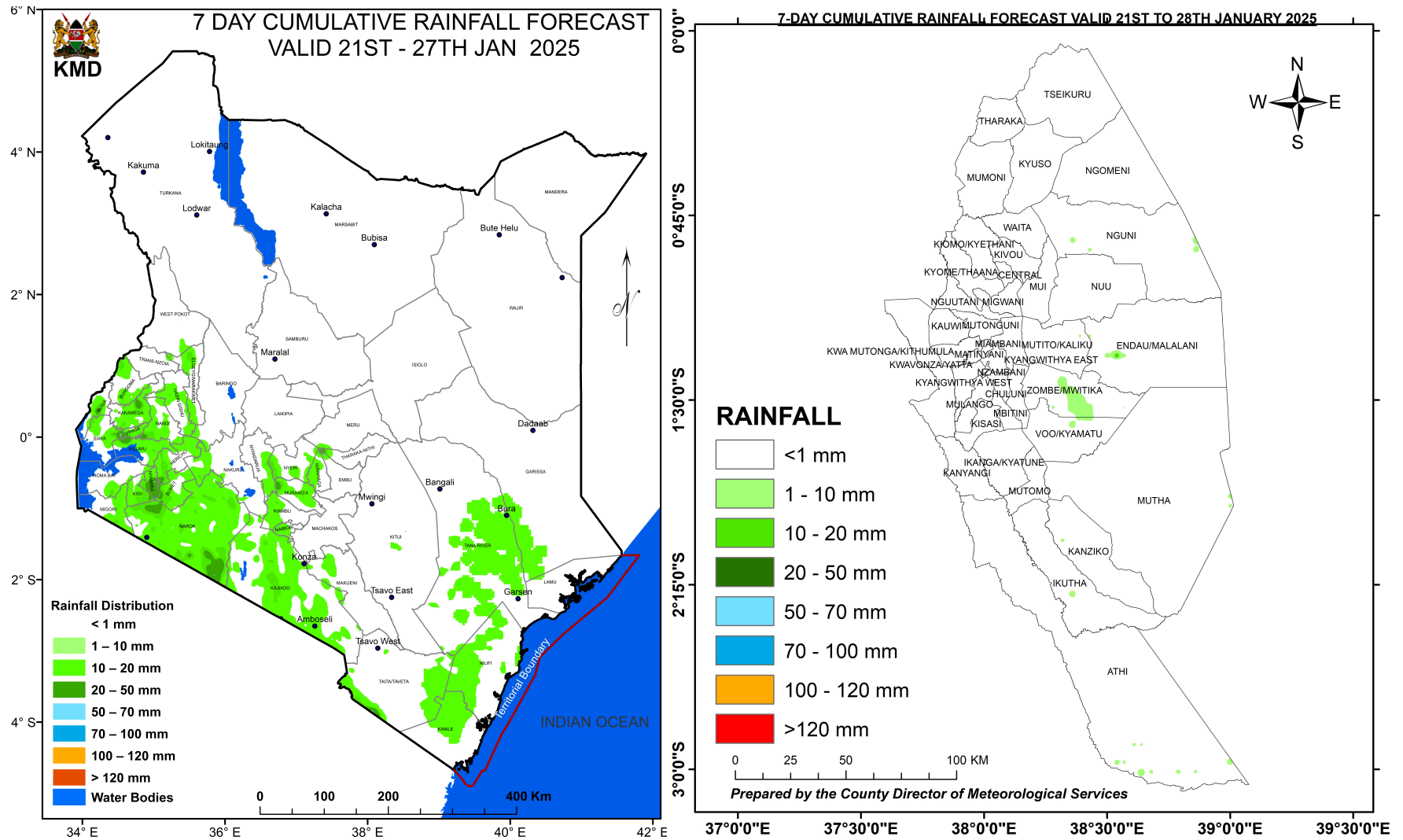
December typically marks the end of the October-November-December (OND) “short rains” season in Kenya. Most parts of Kitui county experienced below-average (generally depressed) rainfall, with an exception of few parts of Kitui South, Rural and East Sub-counties which received near average rainfall.

The rainfall distribution, both in time and space, was generally poor. There were no episodes of heavy rainfall during this period. The OND 2024 seasonal rainfall is coming to an end across most Sub-counties. Temperature is expected to be warmer than average over the whole country.

### 1.3 Outlook for January 2024 to March 2025

The outlook for the next three months indicates that most parts of the county will be generally sunny and dry in January to March. However, some areas in the county may experience a few rainy days in January and February. Temperatures are expected to be warmer than average across the entire county, with higher probabilities of elevated temperatures in Kitui South, East and Mwingi North Sub-counties.

### 1.4 PART II: CUMULATIVE WEEKLY RAINFALL FORECAST MAPS



The weather forecast maps for Kenya and Kitui County; valid: 21<sup>st</sup> to 27<sup>th</sup> January 2025

## 1.5 PART II: FURTHER ADVISORIES

### **SUMMARY ABOUT THE WEEKLY FORECAST:**

Sunny and dry weather conditions expected to dominate over most places of the County. Maximum temperatures are expected to range from 27°C - 35°C, while minimum temperatures are expected to range from 16°C - 23°C. Strong North easterly to Easterly winds with speeds exceeding 12.5 knots (6.5 m/s) are expected in most parts of the County. *Community members advised to inculcate the culture of being “weather – ready”, “climate – smart” and “water – wise” as we navigate the unfamiliar and chaotic environment of a changing climate. This will help them adapt to a changing climate while at the same time mitigating the adverse effects of Climate Change and Variability, hence becoming more resilient to the vagaries of Climate Change. In light of this weather forecast, farmers are also advised to consult with respective local extension officers from the County Ministry of Agriculture and Livestock at ward level for more advice on the best farm practices.*

**Note: 1 mm of rainfall is equivalent to 1 litre of rainfall per square meter.**

#### KEY OF SCIENTIFIC WORDS USED

Rainfall categories	
Range	Category
<5 mm	Light
5 - 20mm	Moderate
20 - 50mm	Heavy
>50mm	Very heavy

Rainfall coverage	
Term	Meaning
Most Places	Between 66% and 100%
Several Places	Between 33% and 66%
Few Places	Below 33%

**Ushauri wa Idara ya Utabiri wa Hali ya Hewa:**  
Mvua za Vuli zimefika kikomo. Wakulima wanashauriwa waanze kuvuna chakula kile kimekauka na kukianika vizuri kwa jua hili kuepukana na athari za sumu kuvu yaani 'aflotoxin'.

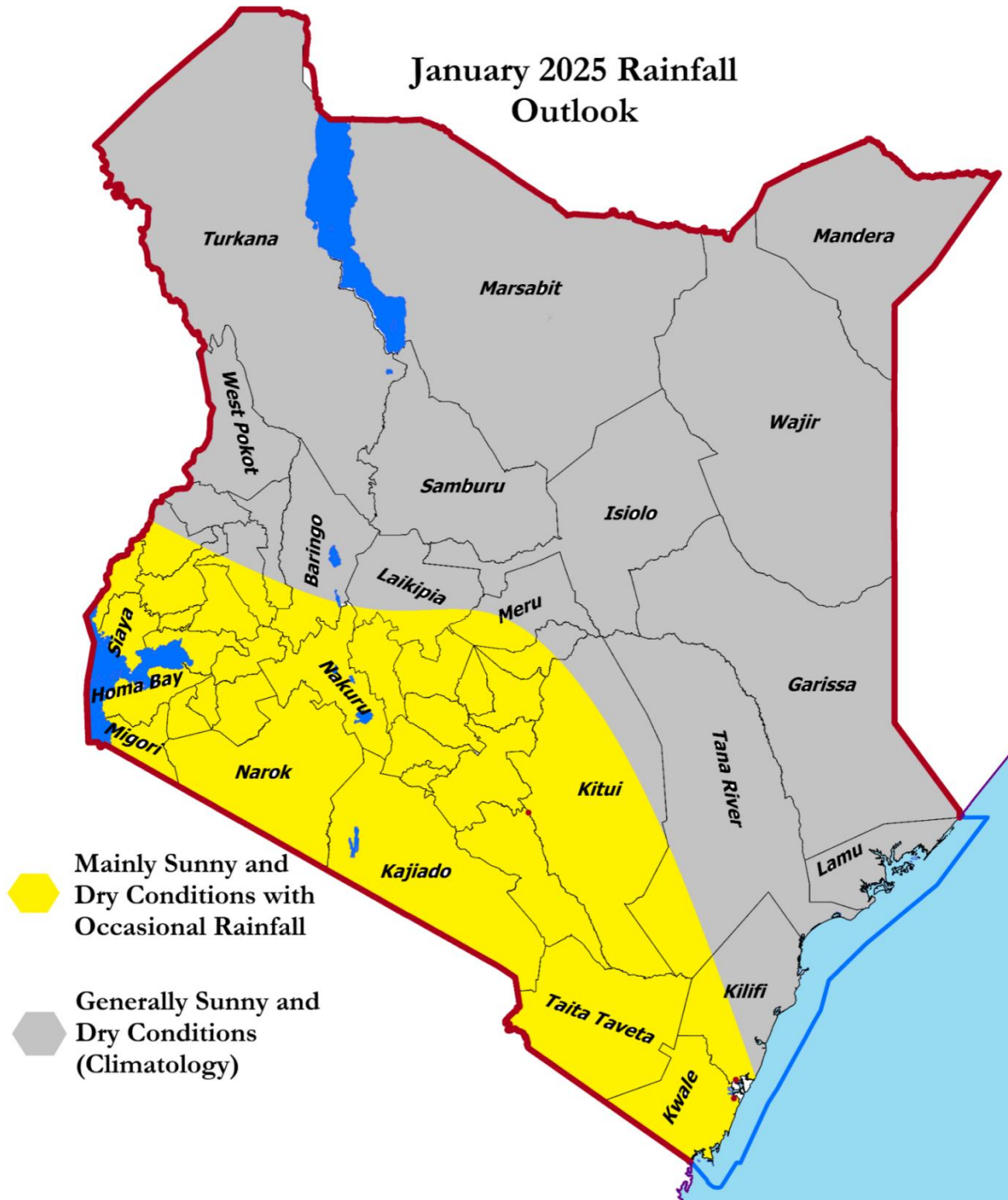
**For further information, please contact:**



Daniel M. Mbithi  
County Director of Meteorological Services  
Mobile: 0715255171  
Email: [mbithi\\_d@yahoo.com](mailto:mbithi_d@yahoo.com)

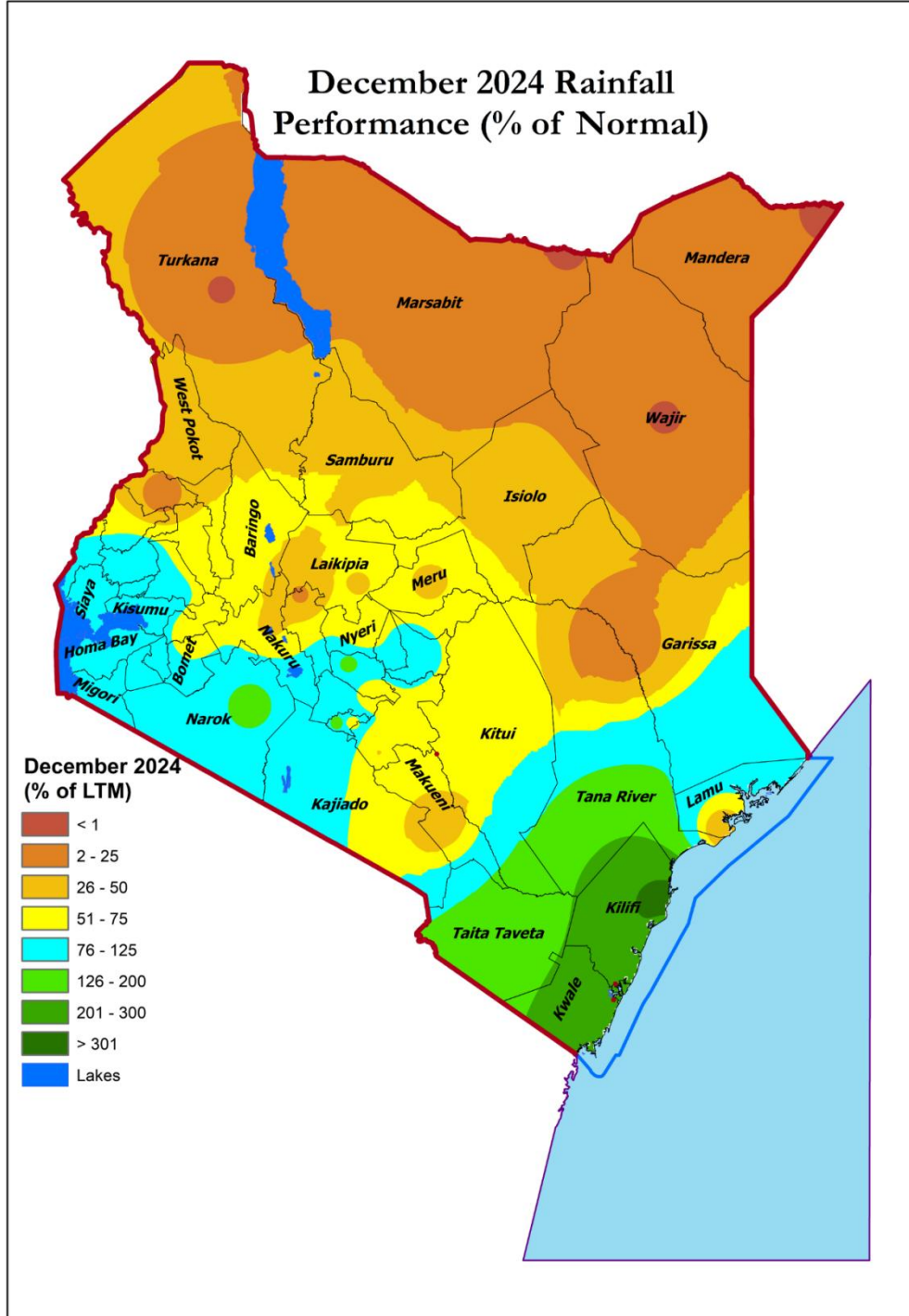
You can find more information about the climate and weather in Kenya on the KMD website <http://www.meteo.go.ke/>

# Annex I: Rainfall forecast for the month of January 2025



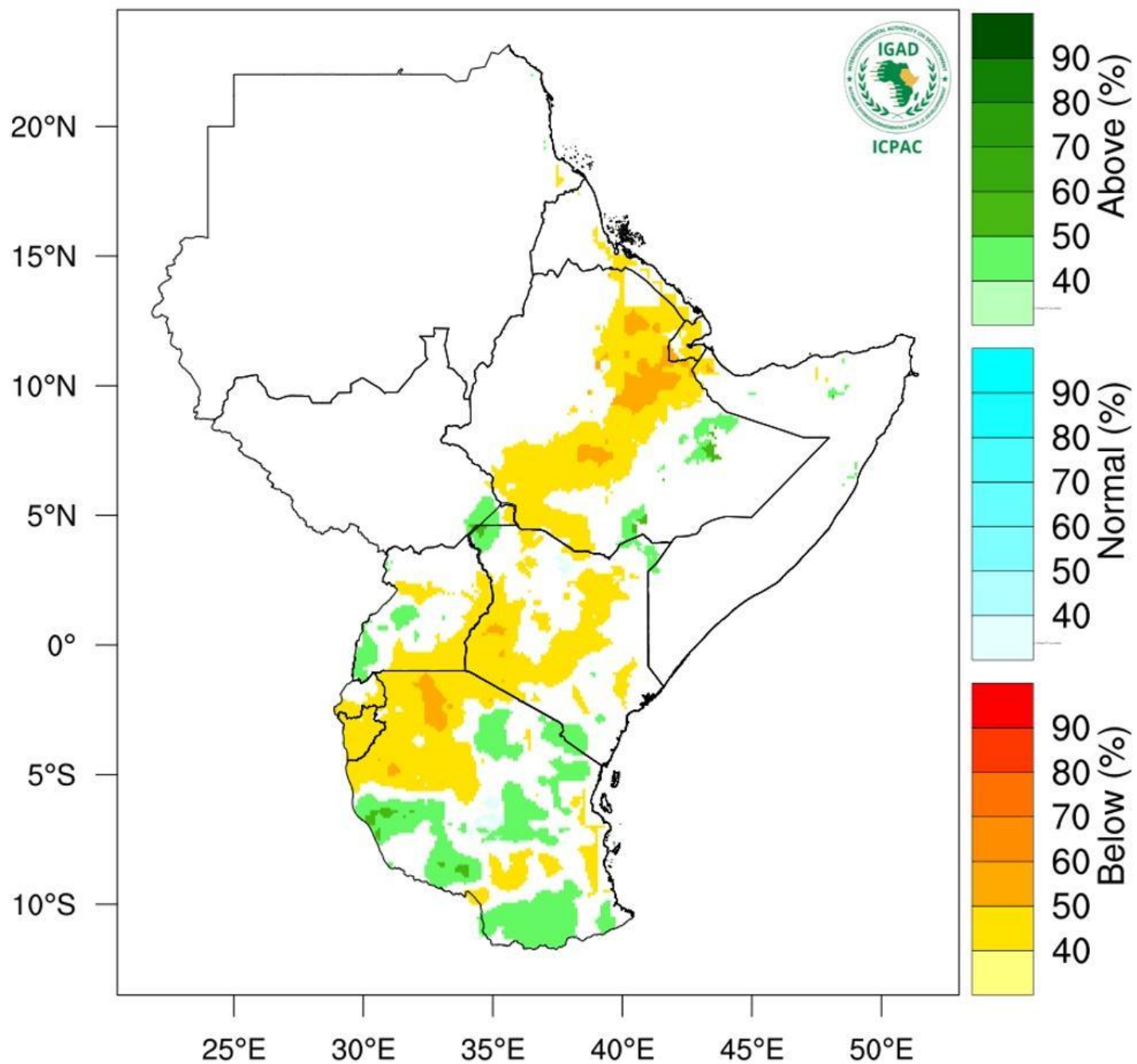
*NB: Below rainfall expected over several places during the month of January 2025 with more intensity to the southern sector of the County*

# Annex II: December 2024 Rainfall Performance (% of Normal)



NB: December 2024 rainfall performance against December (%) LTM

# Rainfall Probabilistic Forecast for Jan - Mar 2025

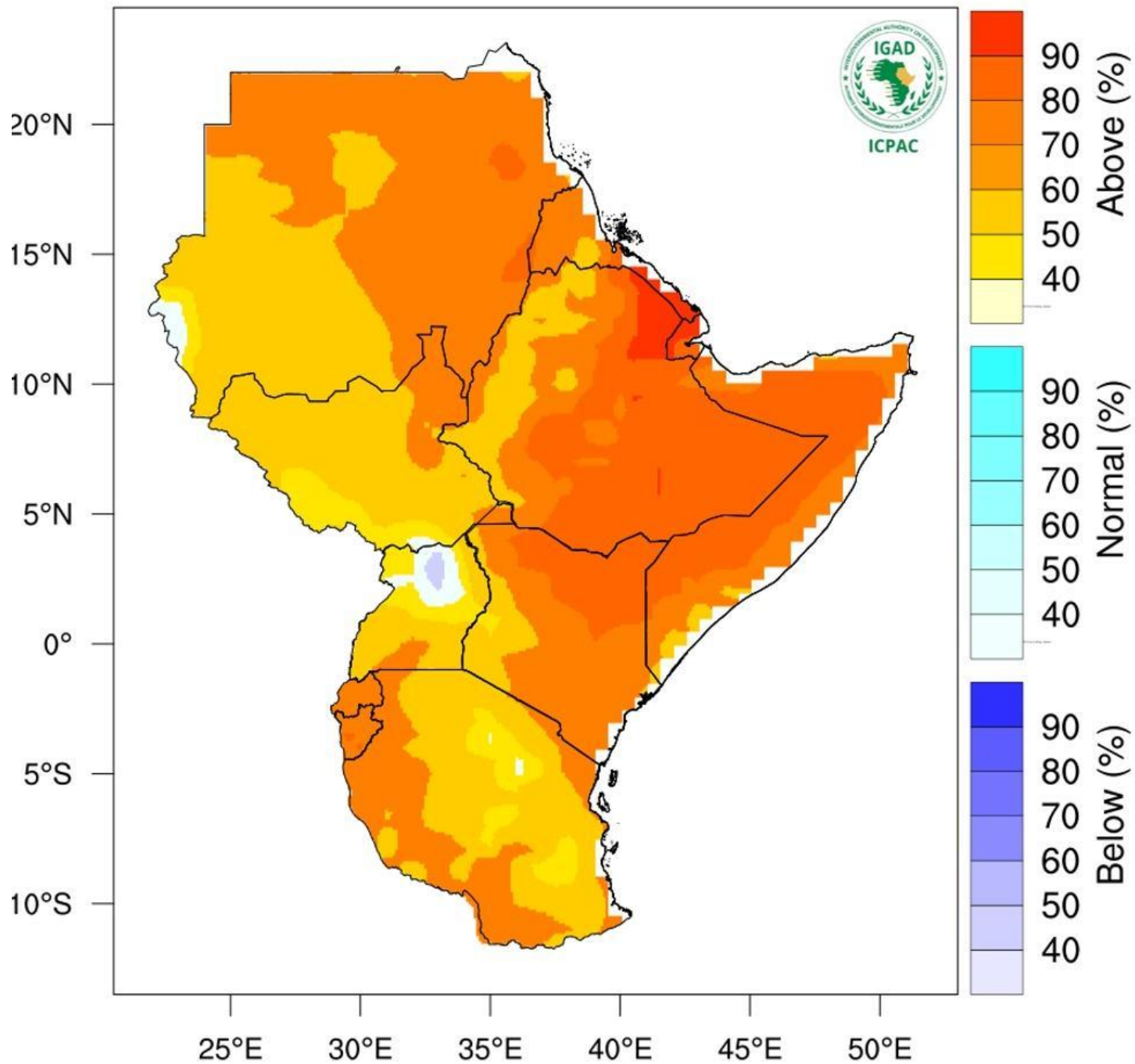


NB: Drier than usual conditions expected over most parts of the County between January and March 2025



# Annex IV: Temperature forecast for the months of January to March

## Temperature Forecast for Jan - Mar2025



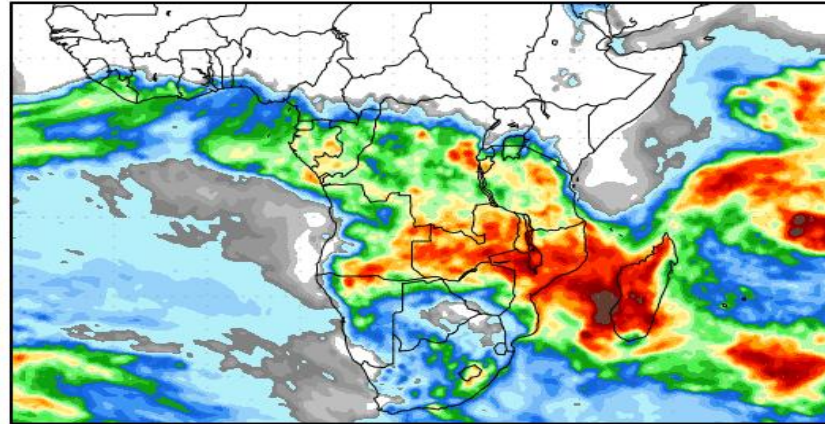
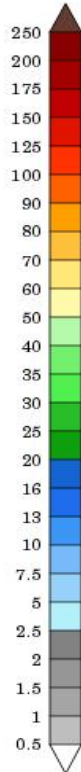
*NB: Warmer than usual conditions indicated over most parts of Kitui County between January and March 2025*

# Annex V: Rainfall forecast for 20<sup>th</sup> January to 5<sup>th</sup> February, 2025

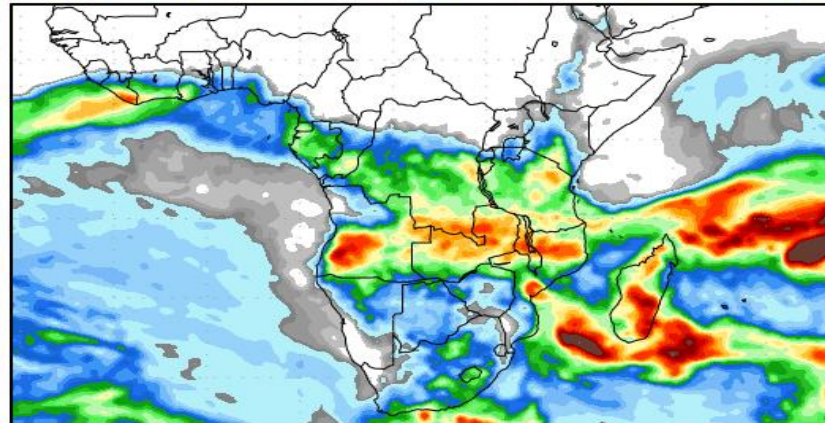
## Precipitation Forecasts

Precipitation (mm)  
during the period:

???, 20 JAN 2025 at 00Z  
-to-  
???, 28 JAN 2025 at 00Z

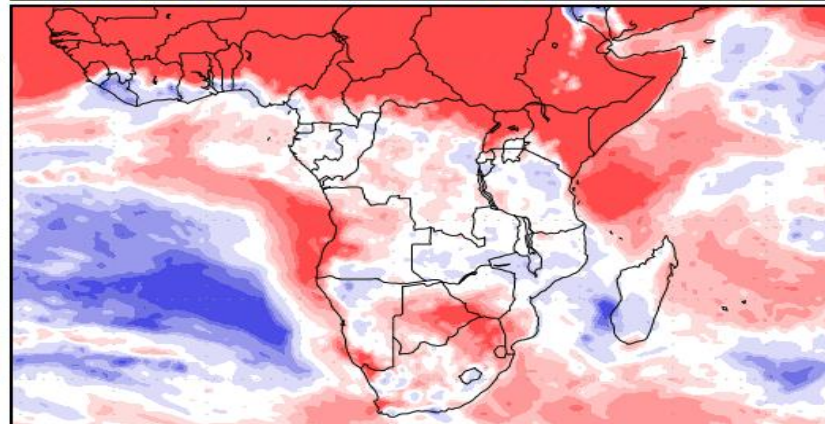
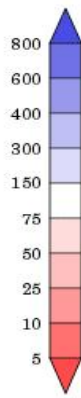


???, 28 JAN 2025 at 00Z  
-to-  
???, 05 FEB 2025 at 00Z



Precipitation (% of normal)  
during the first period:

???, 20 JAN 2025 at 00Z  
-to-  
???, 28 JAN 2025 at 00Z



Precipitation forecasts from the National Centers for Environmental Prediction.  
Normal rainfall derived from Xie-Arkin (CMAP) Monthly Climatology for 1979-2003.  
Forecast Initialization Time: 00Z20JAN2025

*NB: Near to below normal conditions expected over several parts of the County between 20<sup>th</sup> January to 5<sup>th</sup> February, 2025.*