



REPUBLIC OF KENYA  
MINISTRY OF ENVIRONMENT AND FORESTRY  
KENYA METEOROLOGICAL DEPARTMENT  
**TAITA TAVETA COUNTY METEOROLOGICAL OFFICE**  
Email: [cdmsttc@gmail.com](mailto:cdmsttc@gmail.com) or [robasira@yahoo.com](mailto:robasira@yahoo.com)  
P.O. BOX 42 80300 VOI

Date ...1 February 2025...

### MARCH APRIL MAY 2025 SEASONAL CLIMATE OUTLOOK.

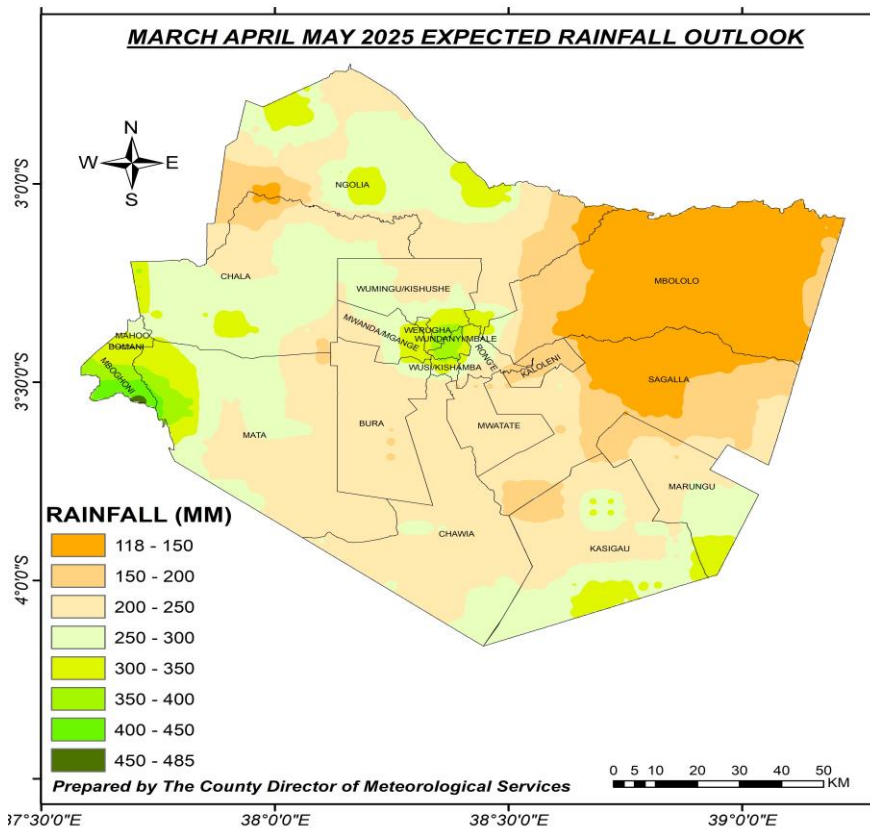


Fig. 1. March April May 2025 Seasonal Rainfall Forecast for Taita Taveta County.

The expected long rains season is likely to be **near normal to below normal rainfall** compared to the March April May long term average rainfall for the past thirty years.

**Rainfall Onset** Expected to occur from 25<sup>th</sup> March 2025 to 5<sup>th</sup> April 2025

**Peak Rainfall** is likely to occur during the month of April 2025.

**Rainfall Distribution** is likely to be poor both in space and time with occasional dry spells during the season.

**Heavy Downpours** occasional heavy rains may occur within the season.

**End of Rains** Rains are expected to end from 4<sup>th</sup> to 17<sup>th</sup> May 2025.

**Duration of rainfall in season:-** Likely to be about 40 days of rainfall during season.

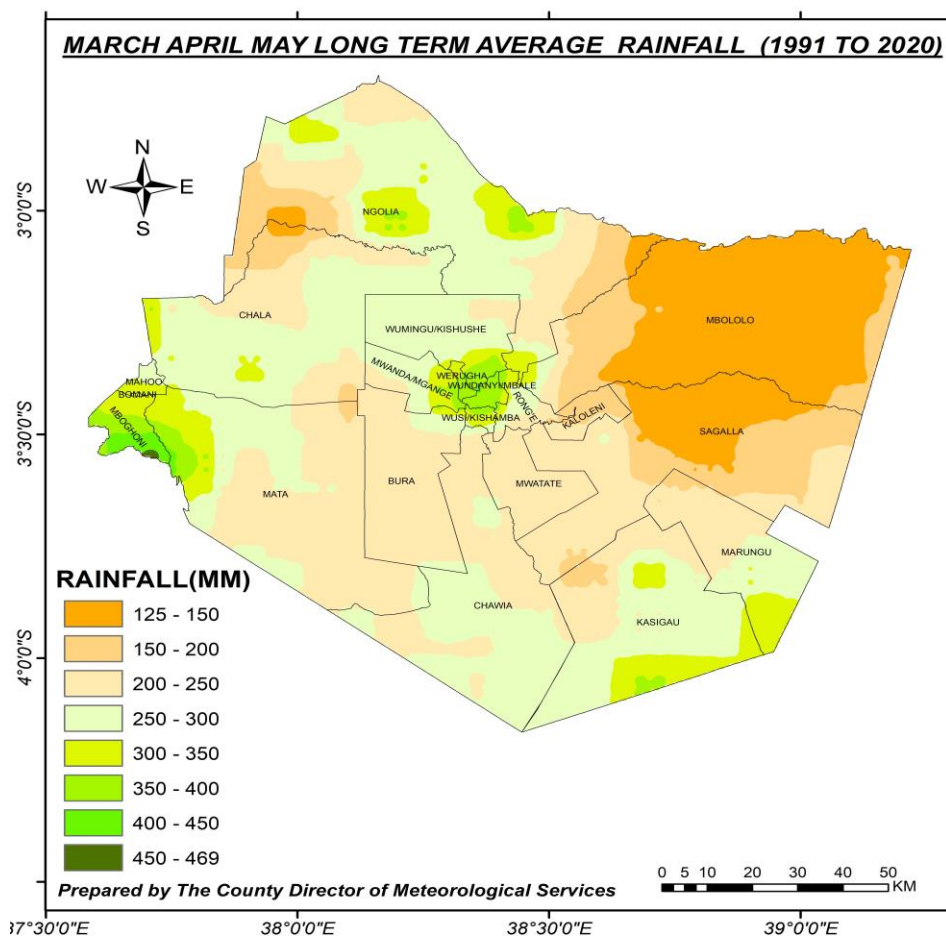
## TEMPERATURES

The temperature Outlook indicates warmer than average temperatures across the entire county during the March April May 2025 long rains season.

### Probable Expected rainfall during the Long rains season Year 2025

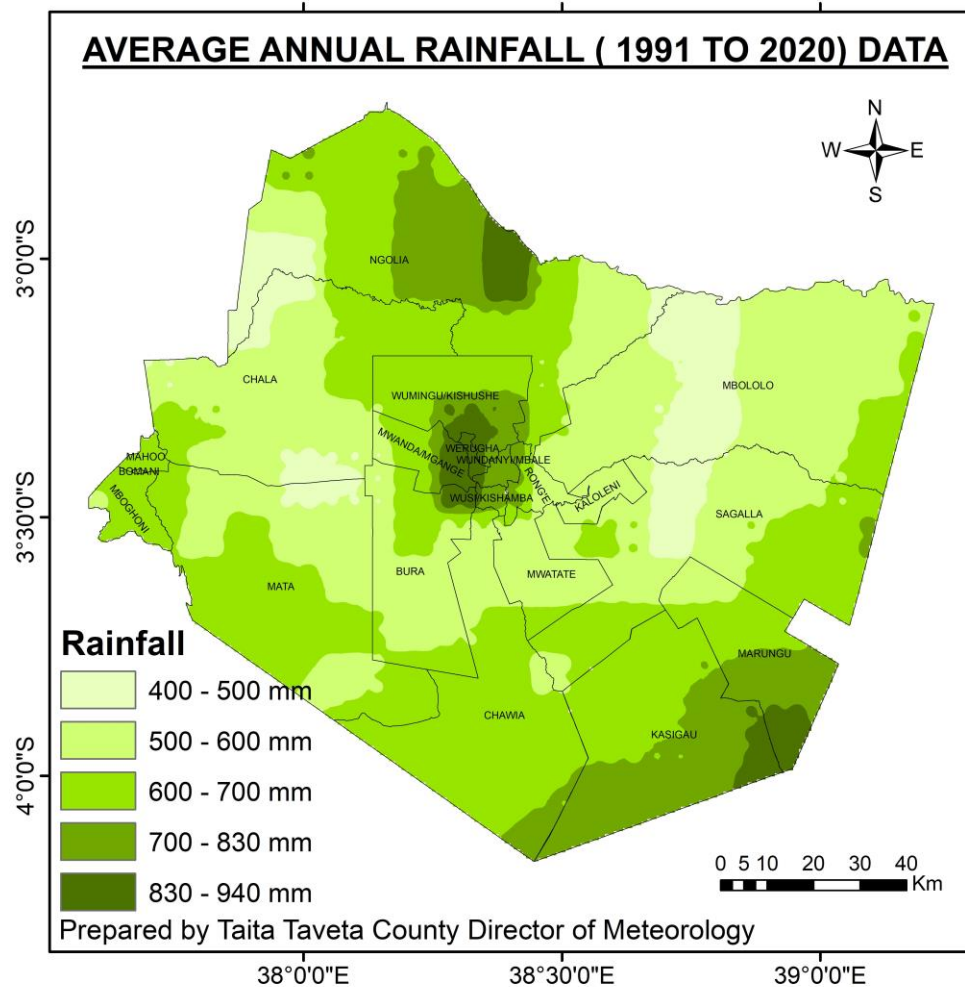
	LONG TERM AVERAGE		EXPECTED RAINFALL MAM 2025	
	Lowlands	Highlands	Lowlands	Highlands
Mwatate	200 – 300 mm	250 – 400 mm	200 – 300 mm	250 – 400 mm
Taita	200 – 300 mm	300 – 450 mm	200 – 300 mm	250 – 400 mm
Taveta	125 – 250 mm	250 – 469 mm	118 – 300 mm	250 – 485 mm
Voi	125 – 250 mm	250 – 350 mm	118 – 250 mm	250 – 350 mm

### CLIMATOLOGY OR AVERAGE RAINFALL MAP FOR TAITA TAVETA COUNTY



**Fig.2 shows long term average rainfall over Taita Taveta county.**

The above map shows long term average rainfall within Taita Taveta County. Long term average rainfall is calculated using rainfall data between 1991 to 2020.



**Figure 3** Annual Long Term Average Rainfall. The long term average rainfall is calculated based on rainfall performance from 1991 to 2020.

#### ADVISORIES

**HEALTH:** - Health experts in the county are advised to be on the lookout for possible increase in water borne diseases as a result of stagnant water that may occur in areas prone to flooding.

**INFRASTRUCTURE:** - Occasional heavy rainfall is likely to have negative effect on the infrastructure. Measures should be put in places to minimise such damages.

**AGRICULTURE:** - Farmers are asked to seek advice from the area Extension Officers on the type of farming activities to engage in during the season. On farm Soil and water conservation should be practiced.

**LIVESTOCK:** - Livestock farmers are called upon to work closely with experts in the livestock sector on the practices they are to carry out during the long rains season.

**WATER:** - Water harvesting and conservation is encouraged using all methods during the season.

**THUNDERSTORMS:** - During the season heavy thunderstorms may occur. Avoid handling metallic substances, use of mobile phones, taking shelter under trees, walking in running water, being in open fields, leaning on walls whenever it rains with lightning flashes and thunder.

The seasonal climate outlook should be used in conjunction with updates issued by the County Director from time to time in the form of Monthly Forecasts, Weekly Forecasts, 24 hour Forecasts and Severe Weather Alerts. The forecasts can be accessed through local media, sms, whatsapp, facebook, and the KMD website.

Robinson Asira

County Director of Meteorological Services

Taita Taveta County

Mobile: 0723 465 915

Email :- [cdmsttc@gmail.com](mailto:cdmsttc@gmail.com), [robasira@yahoo.com](mailto:robasira@yahoo.com)

Website :- [www.meteo.go.ke](http://www.meteo.go.ke)

.