



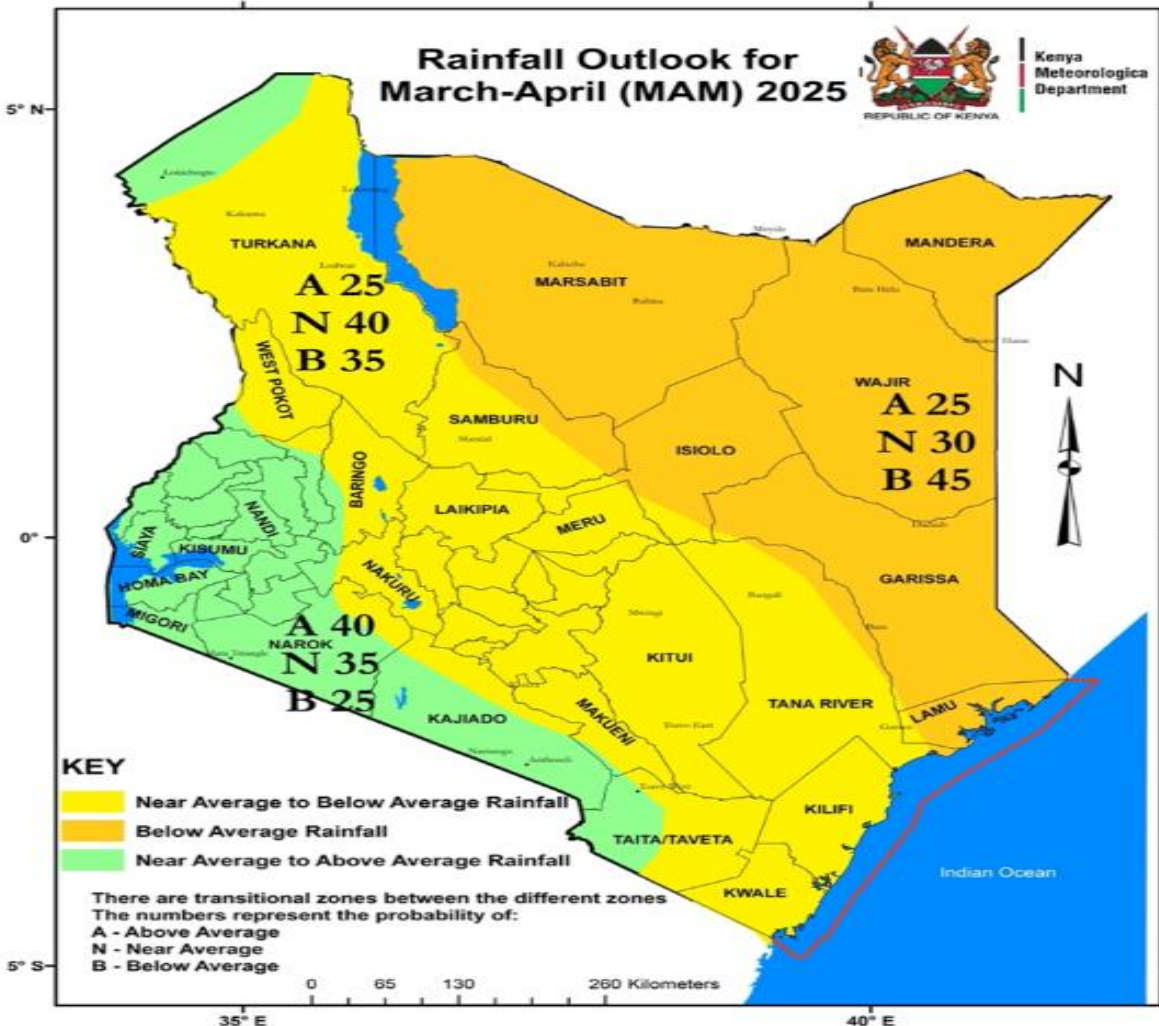
**REPUBLIC OF KENYA**  
**MINISTRY OF ENVIRONMENT, CLIMATE CHANGE and FORESTRY**  
**METEOROLOGICAL DEPARTMENT COUNTY METEOROLOGICAL SERVICE**  
 P. O. Box 493 Meru , Kenya.  
 Phone : 0729287479  
 E-mail: [nthuni@gmail.com](mailto:nthuni@gmail.com)

## MERU March, April, May Long Rain SEASONAL FORECAST

### MAM 2025 RAINFALL SEASONAL SUMMARY OVER MERU COUNTY

MAM 2025 Rainfall	Onset	Cessation	Distribution
Probable Time	4 <sup>th</sup> week of March to 1 <sup>st</sup> week of April	3 <sup>rd</sup> to 4 <sup>th</sup> week of May	Fair

### MARCH, APRIL, MAY (MAM) NATIONAL FORECAST



**Fig. 2: MAM 2025 Rainfall Outlook**

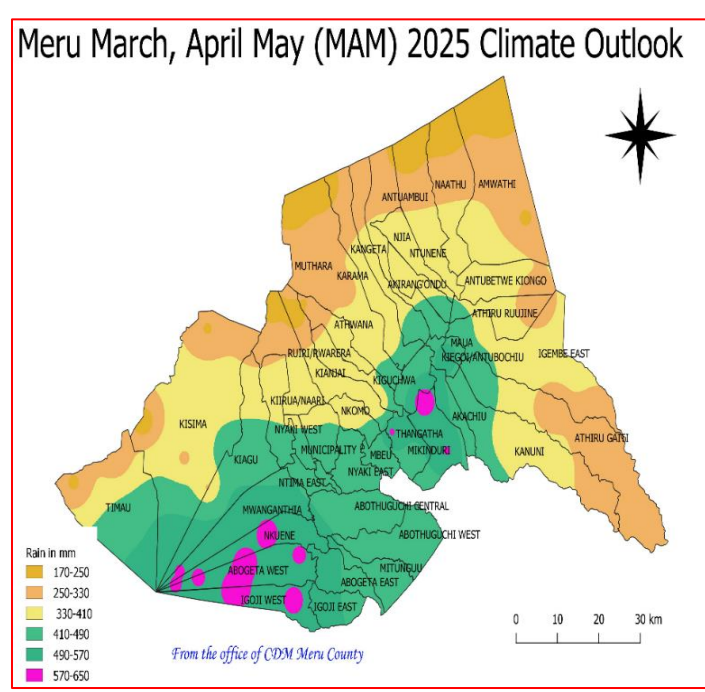
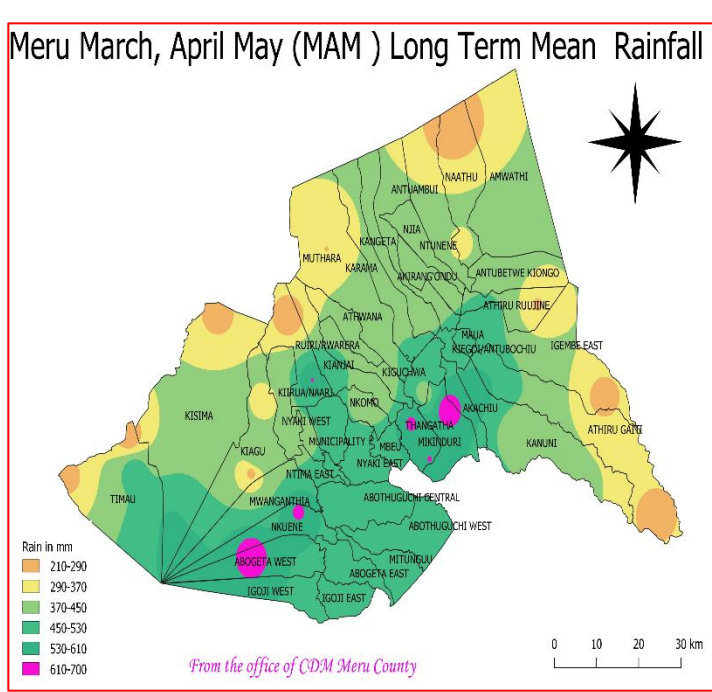
### MAM 2025 SEASON HIGHLIGHTS OVER MERU COUNTY

- The MAM 2025 rainy season is expected to be Near normal to below Normal in differences parts of county with late onset 4<sup>th</sup> week of March to 1<sup>st</sup> week of April
- poor distribution in time and space.
- The rain are expected to Stop 3<sup>rd</sup> to 4<sup>th</sup> week of May 2025

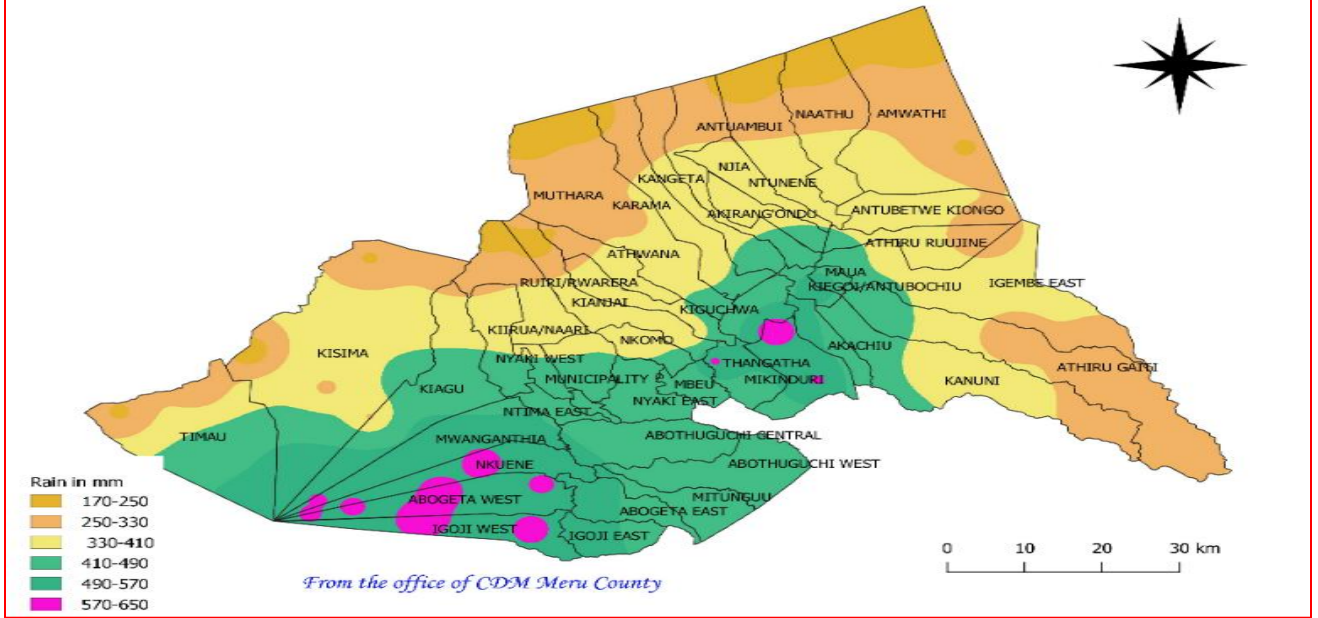
**LONGTERM MEAN**

vs

**FORECAST**



**Meru March, April May (MAM) 2025 Climate Outlook**



**IMPACTS OF OND RAINFALL 2024 ON AGRICULTURE**

Reduced seasonal rainfall amounts, late onset, early cessation and poor distribution is likely to negatively affect agricultural production especially lower zones.

- Farmers are encouraged to adopt climate smart technologies, innovations and management practices: Choice of drought tolerant and fast maturing varieties; adopting Conservation Agriculture (minimal or zero tillage, mulching, inclusion of cover crops); on-farm rainwater harvesting, among others.

***Agriculture and livestock extension officers called upon to advise Farmers appropriate variety and type of crops to plant.***

## ENVIRONMENT AND NATURAL RESOURCES

- Cases of deforestation and vegetation degradation are expected to increase as people look for alternative livelihoods especially in the lower zones with depressed rainfall.
- Measures should be put in place to improve on drought support and alternative livelihoods.

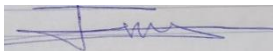
## WATER, IRRIGATION AND SANITATION

- Availability of water for general and domestic use in dams and water pans expected to reduce. Participatory watershed management should be embraced to reduce conflicts from those in irrigated farming.
- *Residents urged to enhance rain water harvesting both on roof catchment and surface runoff.*
- *Those living upstream of water sources advised to enhance soil conservation to reduce siltation of dams and water pans.*
- rainwater harvesting, among others.

## HEALTH SECTOR

- Diseases associated with lack of proper nutrition and poor hygiene due to scarcity of food and water are likely to increase in lower zones.
- The rapid vulnerability assessment should be carried out as well as provide food relief and food supplements to the most vulnerable population respectively.

***NB: This outlook should be used together with the 24-hour, 5-day, 7day, monthly, special forecasts and regular updates/advisories issued by this Department as well as Weekly and Monthly County forecasts developed and availed by County Meteorological Offices***



JUSTIN M NTHUNI

**COUNTY DIRECTOR METEOROLOGICAL SERVICES,  
MERU COUNTY**