



**REPUBLIC OF KENYA**  
**MINISTRY OF ENVIRONMENT, CLIMATE CHANGE AND FORESTRY**  
**KENYA METEOROLOGICAL DEPARTMENT**  
**BUNGOMA COUNTY**  
**SEASONAL FORECAST FOR**  
**MARCH, APRIL AND MAY 2025**  
**Date of issue: 31-01-2025**  
**SUMMARY OF RAINFALL OUTLOOK**

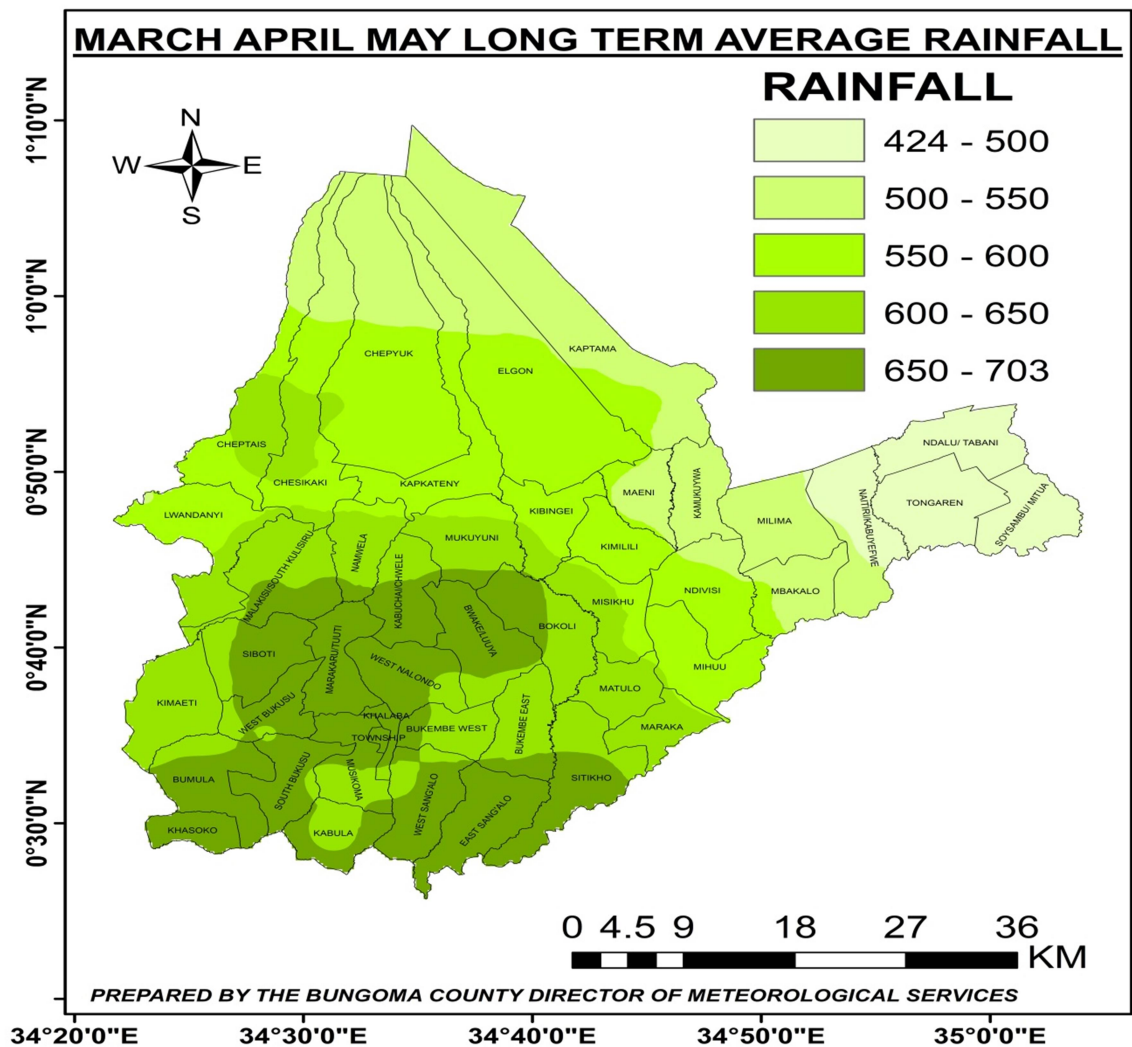
**INTRODUCTION**

The short rains season of March to May is important in supporting many socio-economic activities in Bungoma County. However, the amount and distribution of the rains shows variation over the years thus affecting various livelihoods.

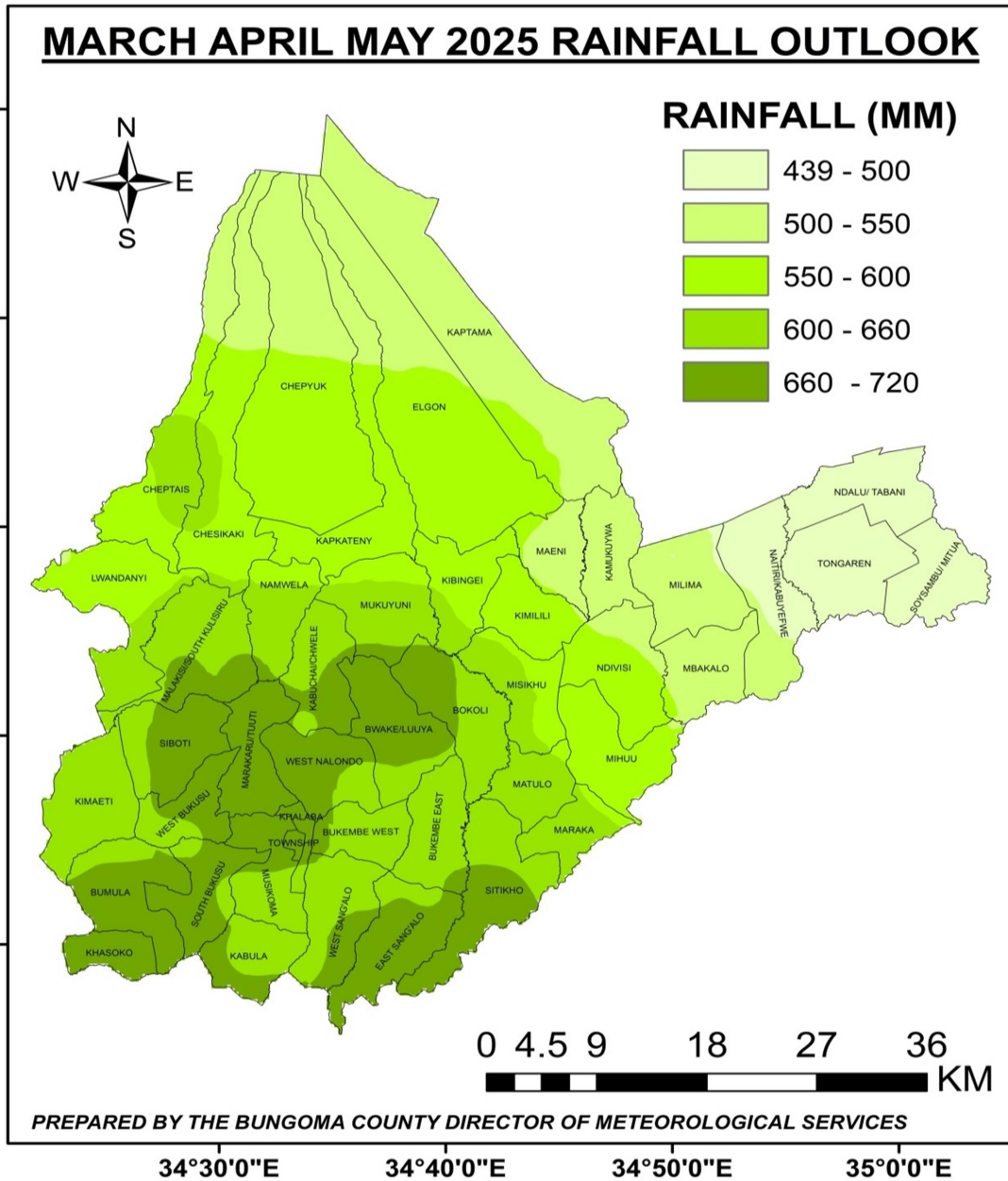
**SUMMARY OF MARCH, APRIL AND MAY (MAM) 2025 LONG RAINS SEASON FOR BUNGOMA COUNTY**

- Expected rainfall in Bungoma County during March to May (MAM) 2025 rainfall season is likely to be near to slightly above the long-term average amounts for the season.
- It is anticipated that most areas in the County will have a fair to good distribution of rainfall in both time and space.
- The rains will occasionally be accompanied with strong wind, hailstones and thunderstorms in some areas.
- Several dry days in between rainy days are likely to be experienced during this period.
- Mt. Elgon sub county, sloppy and hilly areas are potential areas for landslides/mudslides and the communities living in these areas should take precautions and be on high alert since such phenomena may be triggered by the expected rain.
- Low lying areas are also likely to experience occasional flooding incidences especially during the peak month of April.

- Due to topographical differences in the various sub counties, it is expected that there will be differences in the rainfall amounts.
- Figures 1 and 2 show the average March to May seasonal rainfall over the years and the expected March to May 2025 long rains season respectively.



*Fig 1: Long term March-April-May rainfall for Bungoma County*



*Fig.2: Forecasted rainfall for the period March-April-May 2025*

### **Start of rainy season (onset)**

- Onset in areas to the south of the county is expected to be in February with occasional dry spells.
- The onset for the rest of the County is expected to be in February which will be followed by a dry spell till the 4<sup>th</sup> week of March to 1<sup>st</sup> week of April.

### **End of the season (Cessation)**

- Rainfall is expected to continue to June 2025.

### **Distribution**

- **Distribution of the rainfall is expected to be fair to good.**

### **Commentary of County Meteorological Director:**

- Plant as many crop varieties as possible, indigenous trees and conserve soil. Also harvest rain water during the season.
- Watch out for mudslides/landslides in Mt. Elgon area and other sloppy areas.
- For the farmers, consult your local agricultural extension officer for advice on how to plan for farming activities in light of this forecast.
- For other sectors, consult the experts on what to do.

### **POTENTIAL IMPACTS OF MAM 2025 RAINS**

In view of the forecasted rainfall, many sectors are likely to be impacted in various ways. With adequate preparations, the county can avoid some of the likely negative impacts while taking full advantage of the positive ones. The most likely impacts and suggested responses are as given below:

#### **i. Agriculture, Food Security and Livestock Development Sectors**

It is likely that there will be enough water to support most farming activities.

Farming communities are urged to take advantage of the expected rains and maximize on crop yield through appropriate land-use management. Farmers are advised to liaise with the county department of agriculture for advice on the appropriate seeds to plant.

It is recommended to livestock farmers to consider liaising with livestock departments for livestock vaccinations and pesticides stocking due to expected diseases and pest infestations.

#### **Key response measures**

- Harvest and conserve water
- Acquire quality inputs for enhanced agricultural production.
- Intensify pests and diseases surveillance.

## **ii. Environment and Natural Resources Sectors**

With the expected rainfall performance, the Ministry of Environment in conjunction with Forestry Services should encourage the public to put in place soil conservation measures to minimize environmental degradation caused by soil erosion. Community members should also be encouraged to plant more indigenous trees in order to reduce soil erosion and increase forest cover.

### **Key response measures**

- Creation of awareness on tree growing to the communities.
- Maintenance of tree nurseries and seed stores
- Harvest and conserve water

## **iii. Disaster Management Sector**

Lightning strikes are highly probable in the county during this season. Cases of flooding in low-lying areas may also be experienced. Furthermore, landslides/mudslides are probable around Mt. Elgon and other sloppy areas. Some infrastructure such as buildings and bridges may collapse and some roads may be cut off due to occasional high rainfall amount episodes. Disaster management and preparedness unit is therefore advised to put in place measures to avert possible negative impacts that may arise including loss of lives, livelihoods and property.

### **Key response measures**

- Strengthen capacities of disaster and risk management actors
- Map hazard areas
- Mobilize resources
- Activate and disseminate contingency plan

## **iv. Health Sector**

Since the county is expected to receive some rainfall, water-borne diseases such as malaria are likely to emerge. Poorly drained areas may cause pools of stagnant water which may become conducive breeding areas for disease-causing pathogens. County health department should therefore put in place measures that will ensure good health of the people.

### **Key response measures**

- Implement early warning and early action systems and educate the public about the risks related to climate extremes
- Enhance disease surveillance
- Carry out habitat management

## **v. Transport and Public Safety Sector**

The expected rainfall may cause slippery roads in some parts of the county especially in the rural areas resulting in conditions that may cause difficulties in transportation and road accidents. Motorists are therefore advised to drive carefully.

### **Key response measures**

- Repair and maintain all the roads
- Create awareness on safe driving and on the dangers associated with climate extremes

### **vi. Water Sector**

The expected rains may lead to increased siltation and sedimentation in some rivers and dams. Furthermore, there may be increased surface water and groundwater pollution in addition to urban flooding.

### **Key response measures**

- Harvest and store rain water
- Put in place flood early warning systems
- Clear storm drains
- Monitor river water levels

### **vii. Energy Sector**

With increased cloud cover, there is likely to be less solar energy which may lead to under-utilization of the resource. There is also a likelihood of experiencing electric power interruptions.

### **Key response measures**

- Improve power transmission and distribution infrastructure
- Put in place early warning systems
- Plant more trees for biomass production

## **Conclusion**

- Various sectors are urged to come up with detailed advisories on what should be done to counter the impacts of the expected rainfall. Such advisories need to be disseminated in good time.
- The Bungoma County Meteorological office will continue to monitor weather systems and issue appropriate updates, alerts and warnings to the users regularly so as to make informed decisions.

*Please use this seasonal forecast in conjunction with the monthly, weekly, 5 days, Daily weather forecasts issued by Kenya Meteorological Department to assist in making short term decisions.*

For further information, please contact:

County Director of Meteorology Noah Eledi

Mobile: +254 723247317

Email: [cdmbungoma@meteo.go.ke](mailto:cdmbungoma@meteo.go.ke), [eledinoah@gmail.com](mailto:eledinoah@gmail.com)