



REPUBLIC OF KENYA

MINISTRY OF ENVIRONMENT, CLIMATE CHANGE AND FORESTRY

KENYA METEOROLOGICAL DEPARTMENT
County Meteorological services, Embu
P.O. Box 171-60100 Embu, Kenya
Tel: +254705252469

e-mail: cdmembu@meteo.go.ke, cdmembu@gmail.com

Website: <http://www.meteo.go.ke>

Ref: MET/EBU2/1/SEASONAL/18-02-2025

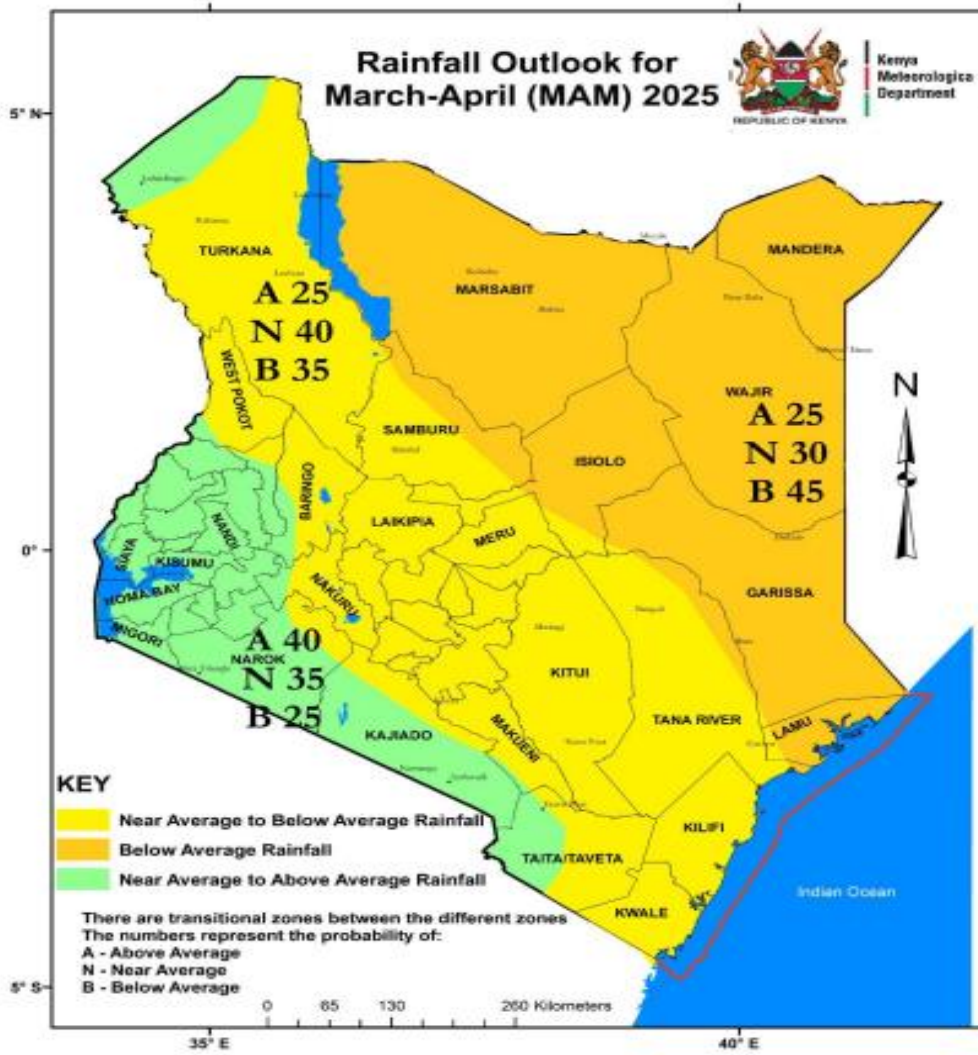
Issue Date: 18/02/2025

EMBU COUNTY WEATHER OUTLOOK FOR THE MARCH-APRIL-MAY (MAM) 2025 SEASON

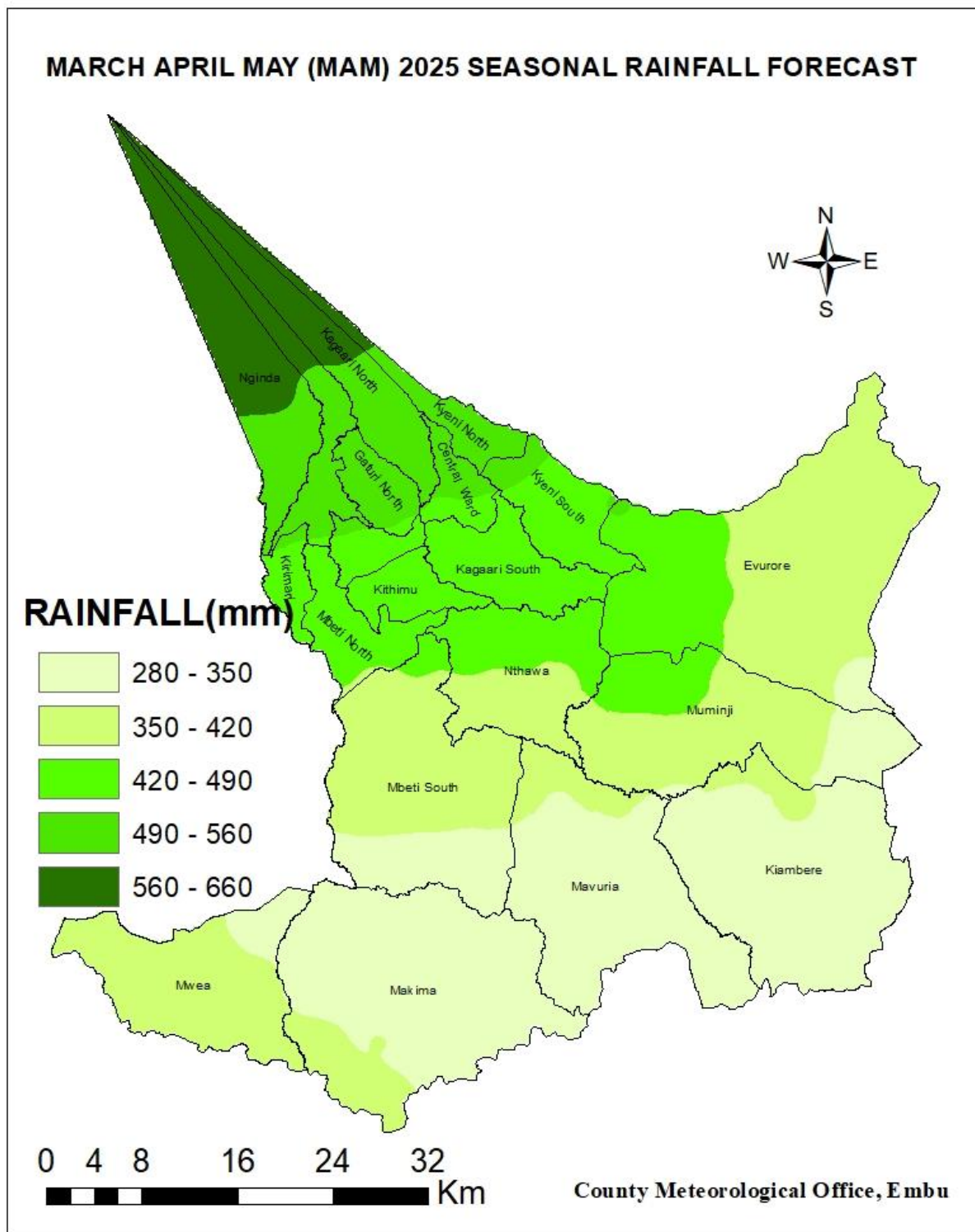
1. HIGHLIGHTS

- *Near Normal to below normal rainfall compared to the March, April, May long term average is expected in Embu County.*
- *The seasonal rainfall onset is expected during 4th week of March to 1st week of April 2025 and expected to cease between 3rd to 4th week of May 2025.*
- *Generally, distribution of the rainfall is expected to be fair both in time and space in Embu County.*
- *The peak is expected in the Month of April 2025.*
- *The temperature forecast indicates that warmer than average temperatures are expected over the whole County.*

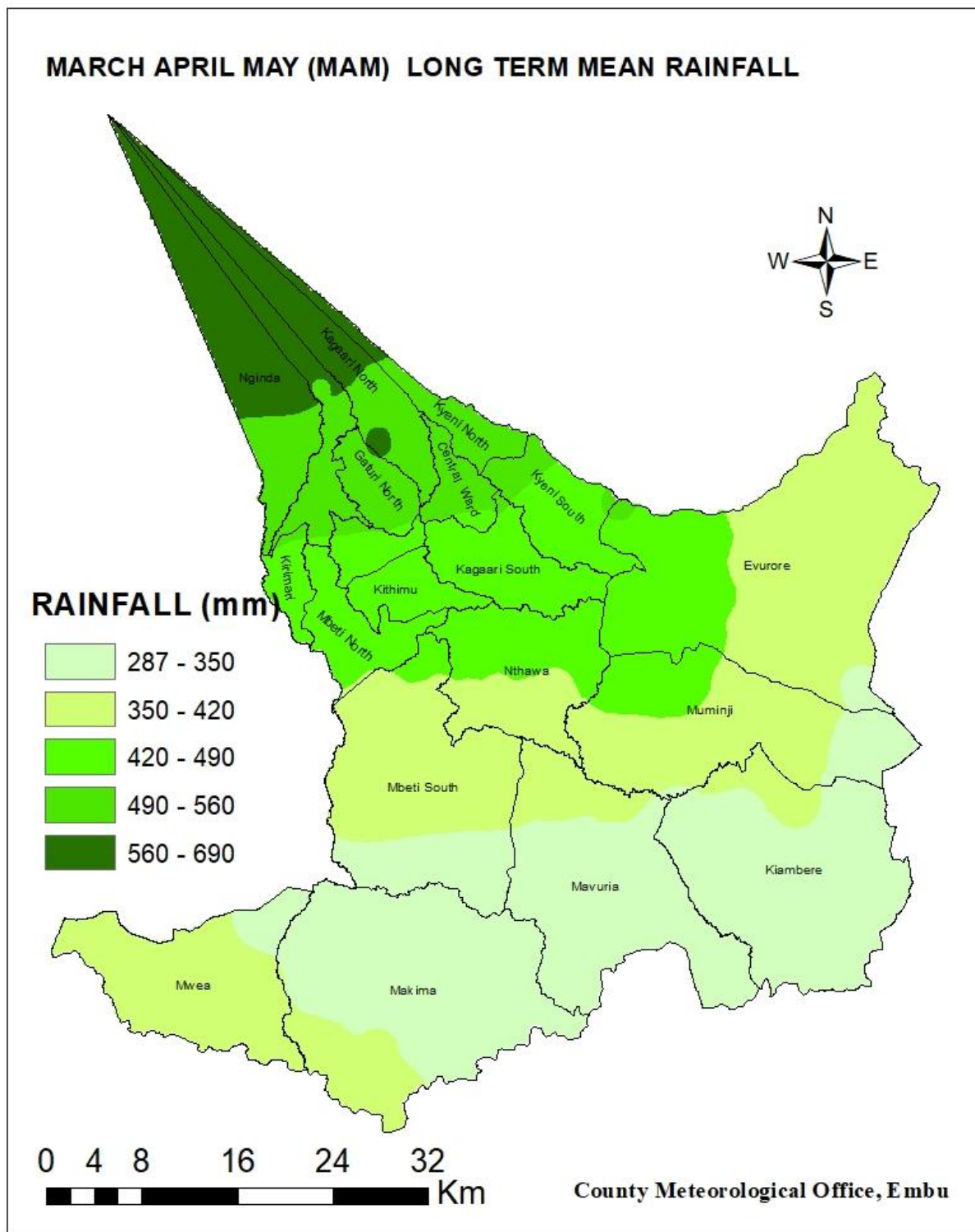
2. MARCH – MAY 2025 NATIONAL FORECAST



3. EMBU COUNTY MAM 2025 SEASON OUTLOOK.



4. EMBU COUNTY MARCH- APRIL-MAY(MAM) LONG TERM MEAN



5. MAM 2025 Seasonal Forecast by Wards(see exact zones in a ward from above maps)

SNO	Subcounty	Ward	Seasonal amounts in mm	Forecast for MAM	Probable onset dates	Probable ceasation dates		
1	Runyenjes	Kyeni North	490 - 560	490 - 560	4 th Week of March 2025 to 1 st Week of April 2025.	3 rd to 4 th Week of May 2025		
		Kyeni North	560 - 690	560 - 660				
		Kagaari North	490 - 560	490 - 560				
		Kagaari North	560 - 690	560 - 660				
		Gaturi North	420 - 490	420 - 490				
		Gaturi North	490 - 560	490 - 560				
		Runyenjes Central	420 - 490	420 - 490				
		Runyenjes Central	490 - 560	490 - 560				
		Kagaari South	420 - 490	420 - 490				
		Kyeni South	420 - 490	420 - 490				
		Kyeni South	490 - 560	490 - 560				
		2	Manyatta	Nginda			490 - 560	490 - 560
				Nginda			560 - 690	560 - 660
				Ruguru			490 - 560	490 - 560
Ruguru	560 - 690			560 - 660				
Kirimari	420 - 490			420 - 490				
Kirimari	490 - 560			490 - 560				
Mbeti North	350 - 420			350 - 420				
Mbeti North	420 - 490			420 - 490				
Kithimu	420 - 490			420 - 490				
Gaturi South	420 - 490			420 - 490				
Gaturi South	490 - 560			490 - 560				
3	Mbeere North			Muminji	287 - 350	280 - 350		
				Muminji	350 - 420	350 - 420		
				Muminji	420 - 490	420 - 490		
		Evurore	287 - 350	280 - 350				
		Evurore	350 - 420	350 - 420				
		Evurore	420 - 490	420 - 490				
		Nthawa	350 - 420	350 - 420				
		Nthawa	420 - 490	420 - 490				
4	Mbeere South	Mwea	287 - 350	280 - 350				
		Mwea	350 - 420	350 - 420				
		Makima	287 - 350	280 - 350				
		Makima	350 - 420	350 - 420				
		Mbeti South	287 - 350	280 - 350				
		Mbeti South	350 - 420	350 - 420				
		Mavuria	287 - 350	280 - 350				
		Mavuria	350 - 420	350 - 420				
		Kiambere	287 - 350	280 - 350				
		Kiambere	350 - 420	350 - 420				

6. RECOMMENDATIONS.

1) Choosing the right crops to plant

-To minimize risks, choose the crops whose seasonal crop water requirements is within the lower limit value of the predicted range.

2) Onset dates

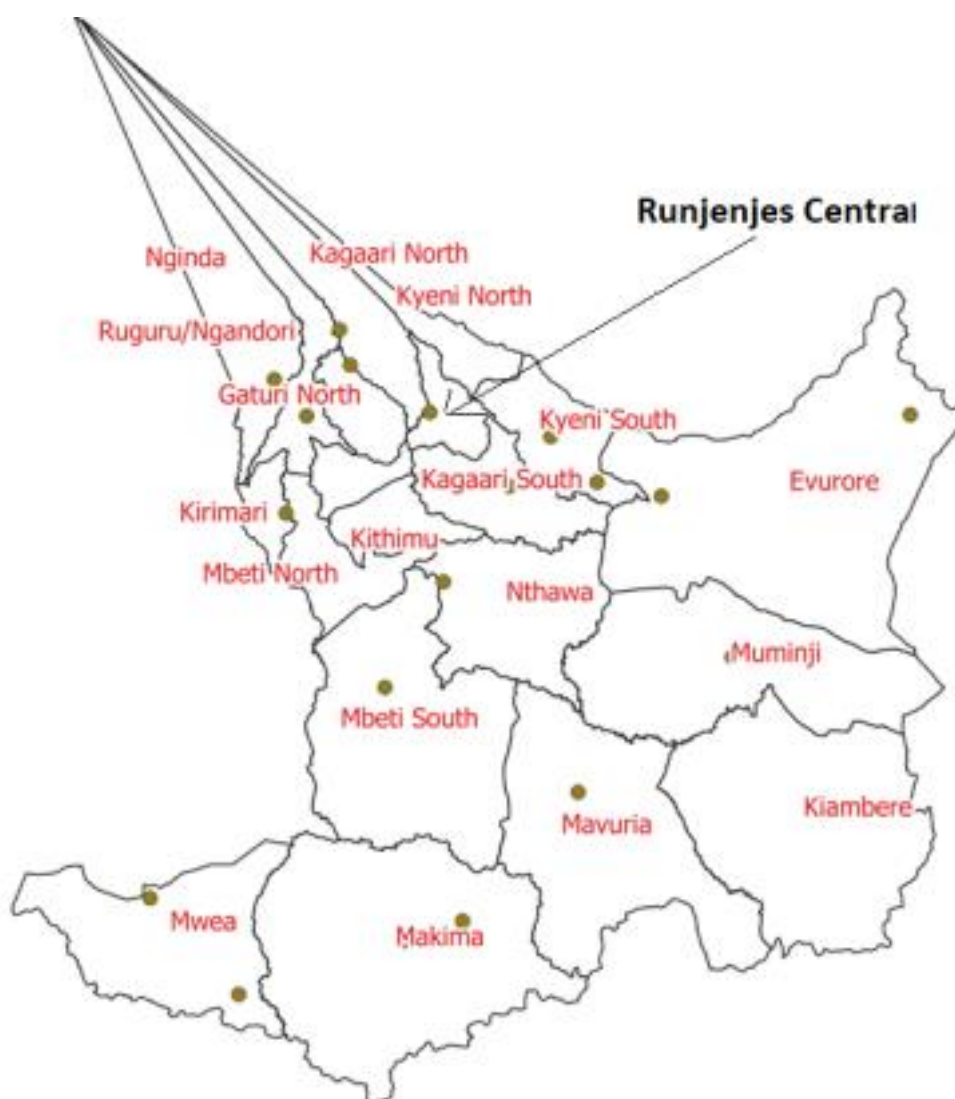
-The onset dates predicted in this seasonal forecast should be used in conjunction with weekly weather updates which are more accurate.

7. HOW TO GET WEATHER UPDATES

You can get weekly weather updates from the County Forecast Folder in the KMD website i.e

<https://meteo.go.ke/node/4942> every Monday evening or Tuesday Morning.

8. EMBU COUNTY WARDS MAP



NB: This forecast should be used together with the 24-hour, 5-day, 7-day, monthly and regular updates/advisories issued by this department as well as weekly forecast issued by County Meteorological office.

COUNTY DIRECTOR METEOROLOGICAL SERVICES EMBU.