



## REPUBLIC OF KENYA

### MINISTRY OF ENVIRONMENT, CLIMATE CHANGE AND FORESTRY

#### KENYA METEOROLOGICAL DEPARTMENT – KISUMU COUNTY

Prosperity House (Former Provincial Headquarters) First Floor, Wing C,  
P. O. Box 336-40100 Kisumu, Tel: 0754-621990 E-mail: cdmkisumu@meteo.go.ke

Date: 6<sup>th</sup> February 2025

## KISUMU COUNTY SEASONAL FORECAST FOR MARCH, APRIL, MAY 2025 “LONG-RAINS” SEASON

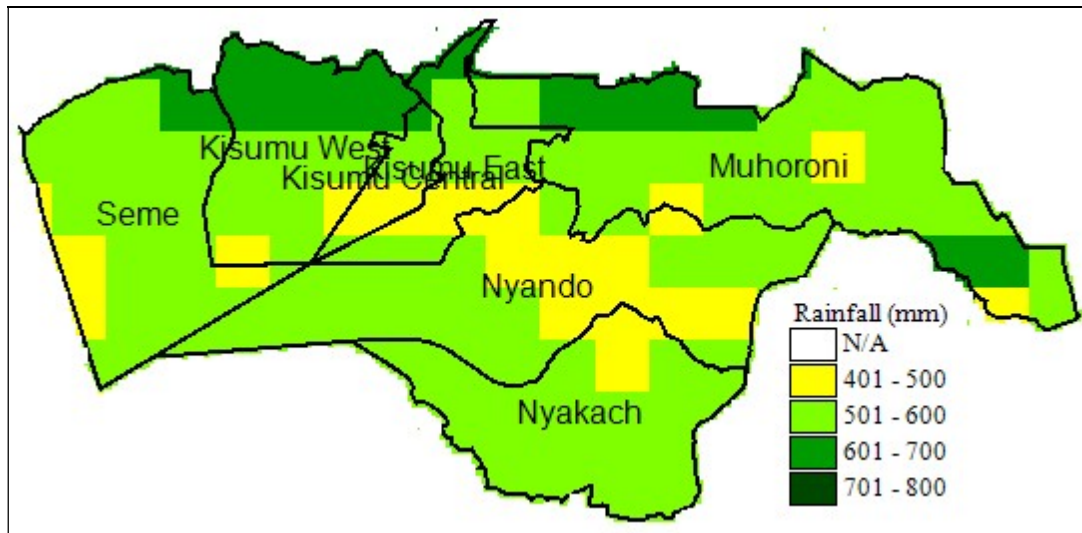


Figure 1. Forecast volume of rainfall in mm in Kisumu County during the March, April, May 2025 rainy season.

### SUMMARY OF SEASONAL RAINFALL OUTLOOK

The March-April-May (MAM) period is the major rainfall (long rains) season over most parts of Kenya including Kisumu County. The County normally experiences the highest seasonal rainfall amounts of about 400 - 600mm. The prevailing negative Indian Ocean Dipole (IOD) over the equatorial Indian Ocean, a persisting weak La Niña condition over the equatorial Pacific Ocean, together with the prevailing atmospheric conditions and local factors that affect the climate of Kenya were considered.

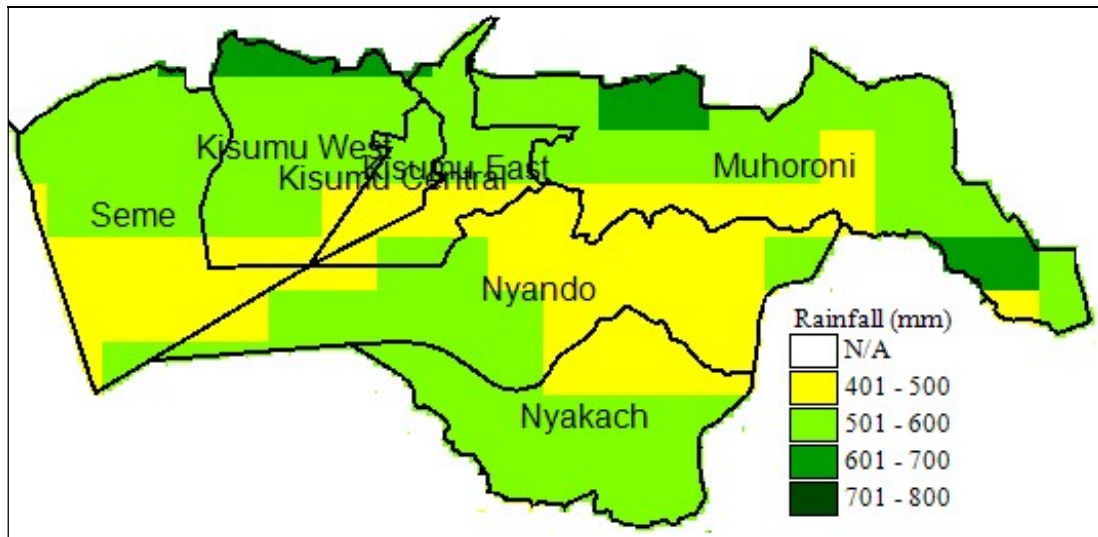
During March to May (MAM) 2025 “Long-Rains” season, Kisumu County will likely receive near-average to above-average (enhanced) rainfall. The County is expected to continue receiving rainfall from the month of February 2025 with occasional dry spells during the onset month of March and the rains will continue into the month of June 2025. The rainfall distribution in time and space is expected to be poor to fair

with dry spells during the onset month of March, while during the peak month of April 2025 the distribution will be good.. During May 2025, rainfall will be near-average with fair to good distribution in time and space over Kisumu County. The rains will be characterized by isolated incidences of heavy rainstorms that may cause flash floods during these three months. The temperature outlook for MAM 2025 season indicates a high likelihood of warmer than average temperatures over much of the County.

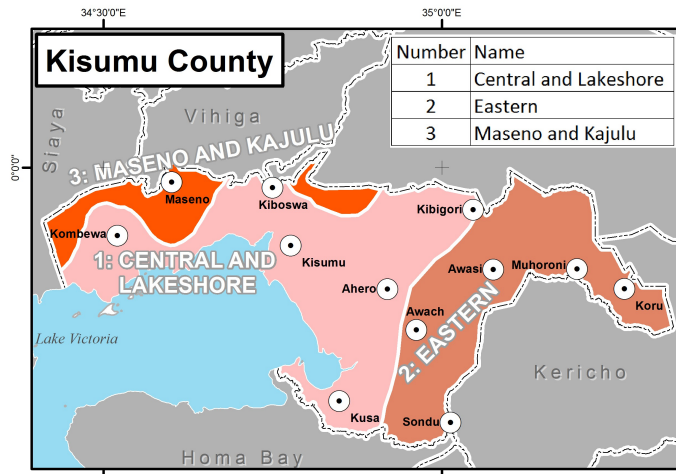
**NB:** There are intra-seasonal drivers of climate variability, such as tropical cyclones and the Madden-Julian Oscillation (an eastward moving tropical weather system that affects rainfall), that are only predictable at shorter lead times. It is therefore imperative to keep up to date with subsequent forecasts and updates.

The map above (Figure 1) shows the volume of rainfall in mm that is forecast to fall in each part of Kisumu County during the coming rainy season.

The map below (Figure 2) shows normal rainfall in mm in each part of the county during the same three-month period.



**Figure 2. Normal rainfall in mm in Kisumu County during the March, April, May rainy season.** This map shows the average rainfall experienced during the same three-month period over 30 years between 1981 and 2010



**Figure 3. The main climatic zones of Kisumu County**

### **Seasonal Forecast for Kisumu County by climatic zone**

#### **Forecast for Central/Lakeshore, Eastern and Maseno/Kajulu climatic zones 1, 2 and 3 (includes Kisumu, Kombewa, Ahero, Kiboswa, Kibigori, Muhoroni, Chemelil, Awasi, Sondu, Koru Maseno, Kajulu etc)**

**Start of rainy season (onset):** Rainfall is expected to continue from February 2025 with occasional dry spells during the onset month of March 2025.

**End of rainy season (cessation):** Rainfall will continue into June 2025.

**Probable volume of rainfall:** 400 – 600 mm – Close to or more than the long-term average rainfall received in this season over the past 30 years.

**Distribution of rainfall over time:** Rainfall is expected to be near-average to below-average (depressed) with poor to fair distribution both in time and space over most places especially during the onset month of March, while during the peak month of April 2025 rainfall will be near-average to above-average (enhanced) and well distributed both in time and space. During the month of May 2025 near-average rainfall with fair to good distribution in time and space will be experienced over Kisumu County. During these months, isolated incidences of heavy rainstorms accompanied with thunderstorms will likely occur that may cause flash floods.

#### **Commentary of County Meteorological Director:**

- Areas near Maseno, Kiboswa, Kibigori, Kajulu and Koru are expected to receive more than 600 mm of rain.
- Dry spells are likely to be more than 5 days especially during the months of March and May.

**Advice to farmers from Ministry of Agriculture:**

- Consult your local agricultural extension officer for advice on how to plan farming activities in the light of this forecast

**Please use this seasonal forecast in conjunction with the weekly and monthly weather forecasts for Kisumu County, issued by the County Director of Meteorology.**

**For further information, please contact:**

County Director of Meteorology – Paul Oloo

Mobile : 0721 624 918

Email: [paul\\_oloo@yahoo.com](mailto:paul_oloo@yahoo.com), [pauloloo16@gmail.com](mailto:pauloloo16@gmail.com),

**More information about the climate and weather in Kenya is on the KMD website <http://www.meteo.go.ke/>**