



REPUBLIC OF KENYA
MINISTRY OF ENVIRONMENT, CLIMATE CHANGE AND FORESTRY
STATE DEPARTMENT FOR ENVIRONMENT AND CLIMATE CHANGE
KENYA METEOROLOGICAL DEPARTMENT
UASIN GISHU COUNTY

P. O. Box 2100, 30100 Eldoret, Kenya
Telephone: +254 (0) 722 967259 or +254(0)797 898494
e-mail: cdmuasingishu@gmail.com or cdmuasin_gishu@meteo.go.ke,
Website: <http://www.meteo.go.ke>

**UASIN GISHU COUNTY MARCH – APRIL – MAY (MAM) 2025 LONG
RAINS WEATHER OUTLOOK.**

UGC/SFCST/2025(1)

ISSUE DATE:07/02/2025

**RAINFALL AND TEMPERATURE OUTLOOK FOR MARCH-APRIL-MAY 2025 (LONG-
RAINS) SEASON.**

SUMMARY OF RAINFALL OUTLOOK

MARCH-APRIL-MAY 2025

The March-April-May long rains constitutes a major rainfall season over Uasin-Gishu County. This being the main planting season, the following listed scenarios are likely to be experienced;

- ***Near to Above the long term Average*** rainfall amounts for the season in the County.
- ***Poor to fair distribution*** of rainfall in both space and time.
- ***Normal to late onset*** with occasional dry spells.
- *Occasional storms are likely to be experienced.*
- *Most of the rainfall over the better part of the county is likely to be recorded during the peak month of April.*

2.1 UASIN-GISHU COUNTY MARCH-APRIL-MAY RAINFALL FORECAST.

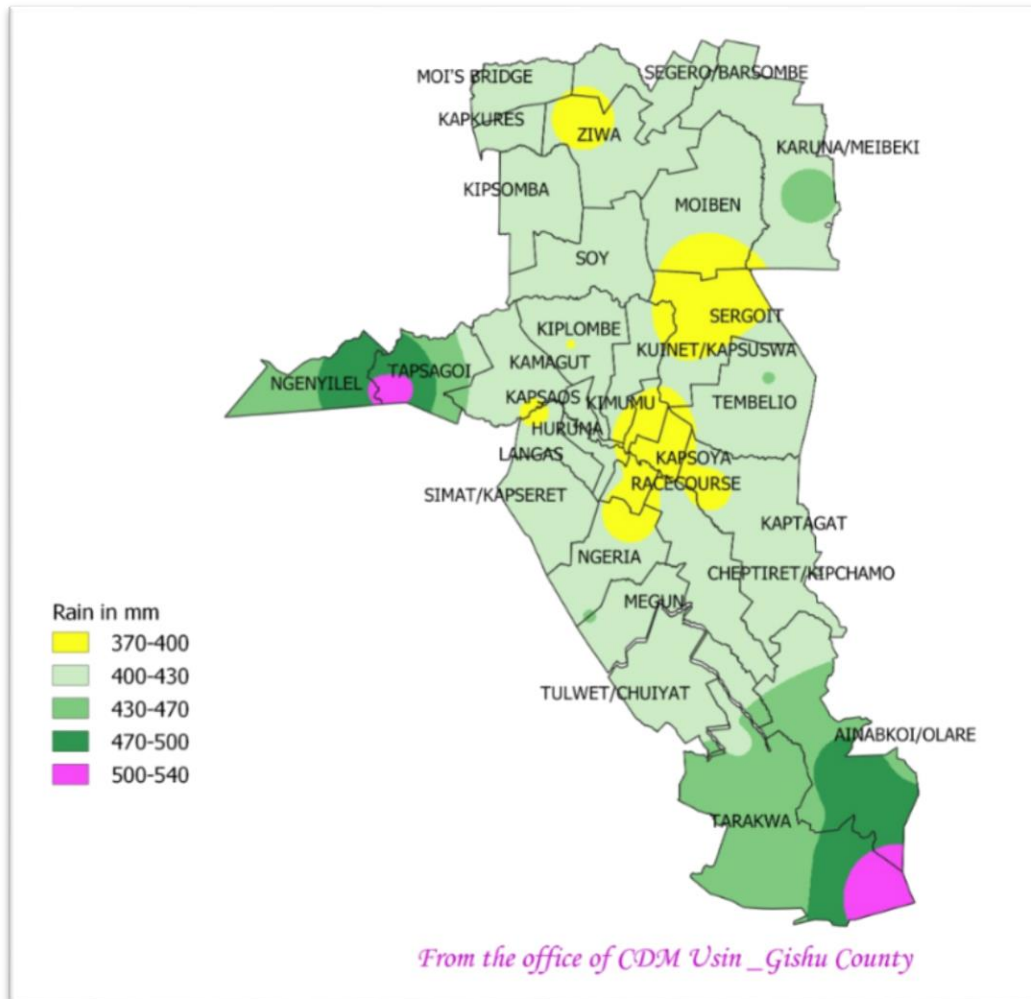


Fig 1

The map above depicts the rainfall outlook for the season.

Rainfall is expected to continue from February with occasional dry spells. The expected rainfall is likely to be **Near to Above the Long-Term Average** amounts for the season.

The distribution of the rainfall is likely to be **Poor to Fair** in both time and space.

The peak of the rains is to be experienced in April.

2.2 FORECAST BY CLIMATIC ZONES (SUB-COUNTIES)

Probable amounts of rainfall;

1. **Soy Sub-county:** 370-430mm
2. **Moiben Sub-county:** 370-470mm
3. **Kapseret Sub-county:** 370-470mm
4. **Ainabkoi Sub-county:** 370-540mm
5. **Kesses Sub-county:** 370-540mm

6. **Turbo Sub-county:**370-540mm

2.3 ONSET AND CESSATION OF THE MARCH-APRIL-MAY 2025 LONG-RAINS.

REGION	ONSET	CESSATION	DISTRIBUTION
Uasin Gishu County.	Continues from February 2025 followed by dry spell till 4 th week of March to 1 st week of April 2025.	Continues to June, 2025.	Poor to fair.

2.4 UASIN GISHU COUNTY LONG TERM MEAN.

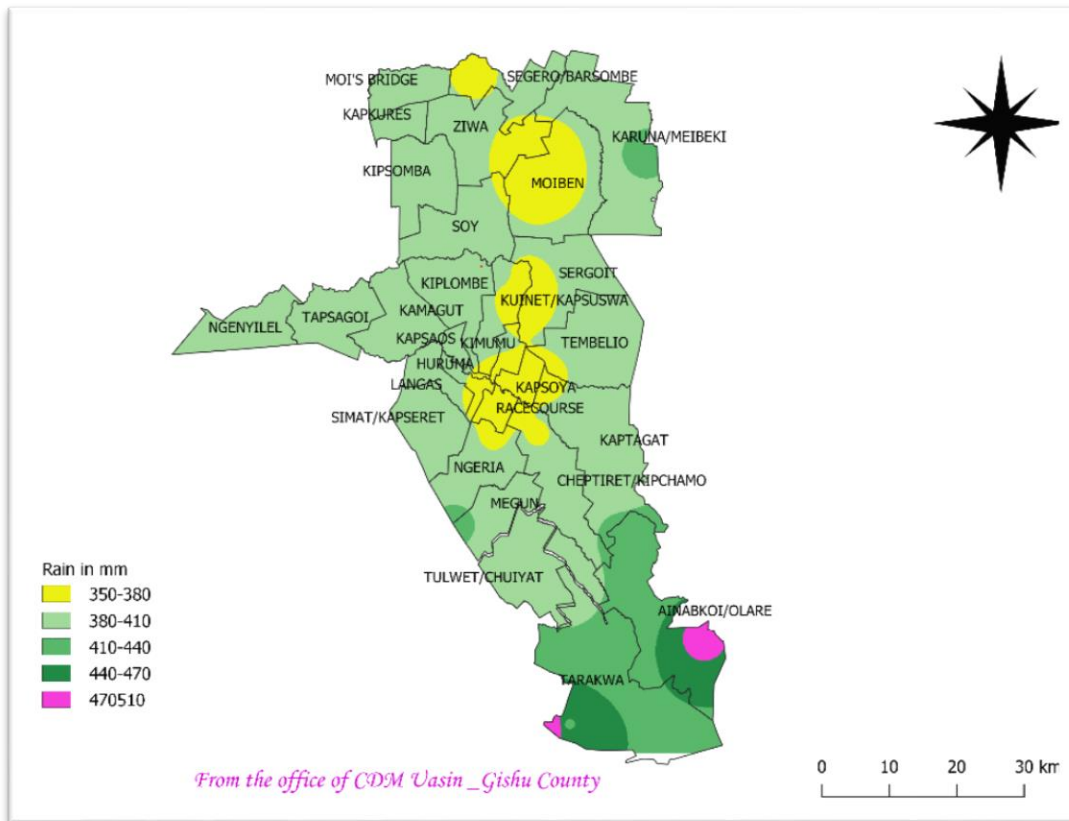
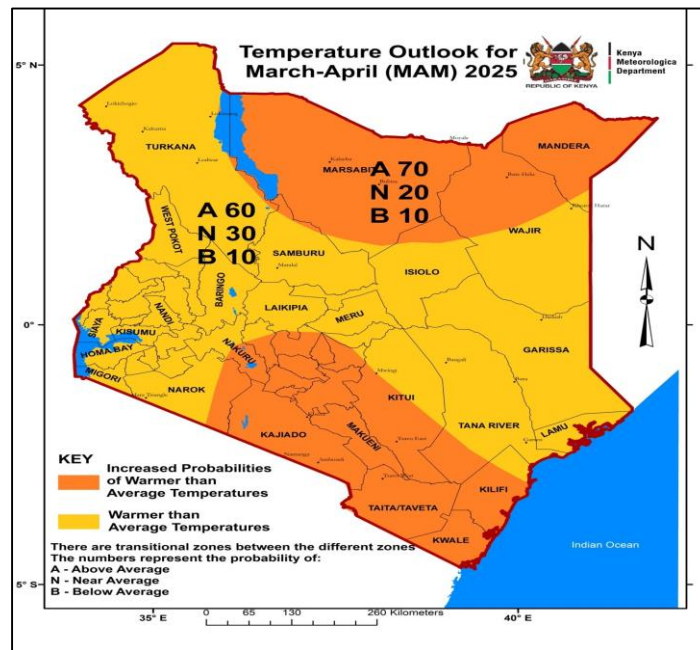


Fig 2
The map above depicts the mean (average) March-April-May seasonal rainfall in the County.

2.5 MARCH-APRIL-MAY 2025 SEASONAL TEMPERATURE FORECAST.

Fig 3

From the national temperature outlook map below, warmer than average temperatures will be recorded in the county during the season.



3.0 POTENTIAL IMPACTS OF THE MARCH-APRIL-MAY 2025 RAINS.

In view of the forecasted rainfall, many sectors and livelihoods in the County are likely to be impacted positively and negatively. With adequate preparations, the County government can deploy measures to avoid and/or minimize on some of the likely negative impacts.

3.1 Agriculture, Food Security and Livestock Development Sectors.

The rainfall expected over most parts of the county is likely to positively impact on agricultural production. Farmers are therefore advised to take advantage of the rains in order to maximize on crop yield through appropriate farming and land use management procedures and liaise with the County Department of Agriculture for advice on the appropriate time and seeds to plant. Surplus livestock feed can be stored for future use.

3.2 Environment and Natural Resources Sectors.

The Ministry of Environment, climate change and Forestry, Departments and Agencies as well as the County Government is advised to plant more trees during this season.

This will certainly increase the tree cover in our national forests as well as protecting/conserving the environment.

3.3 Disaster Management Sector.

Relevant authorities are advised to sensitize and disseminate information for anticipatory action to be taken. Floods and lightning strikes are likely to occur in highland areas of Kaptagat, areas bordering Nandi and Elgeyo Marakwet counties. Parents and school administrations are advised to restrain school children from playing outside of their homes and classrooms during rainy days.

3.4 Health Sector .

Water borne diseases associated with poor sanitation as well as flooding may emerge within the county. Health authorities are, therefore, expected to be on the lookout and equip hospitals, dispensaries and other health facilities with necessary drugs to be able to deal with such situations as they arise. There is also need to be on the lookout for Highland Malaria in the county.

3.5 Transport and Public Safety Sector.

The expected rainfall may cause destruction to road and rail infrastructures. Relevant authorities are advised to keep watch. Poor visibility due to fog/mist are also probable along Eldoret-Eldama Ravine road(Kaptagat area) and Eldoret-Nakuru road(Burnt forest and Timboroa areas). Light aircrafts are advised to take utmost care in the western routes and avoid flying through deep cumulus clouds, especially in the afternoon hours. Such clouds are associated with severe turbulence (updrafts and downdrafts and cross winds occasioned by strong convections) and lightning.

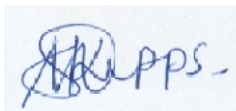
3.6 Water Sectors.

Water resources for drinking, sanitation and industrial use in the county are expected to improve due to the expected rainfall.

Water harvesting is highly encouraged in areas normally experiencing scarcity .

3.7 Urban Planning.

The county Government is advised to unblock all drainage systems in good time to minimize damage on road and rail infrastructure caused by surface run-off and roof catchment.



Michael K.Suter.

COUNTY DIRECTOR OF METEOROLOGICAL SERVICES.

