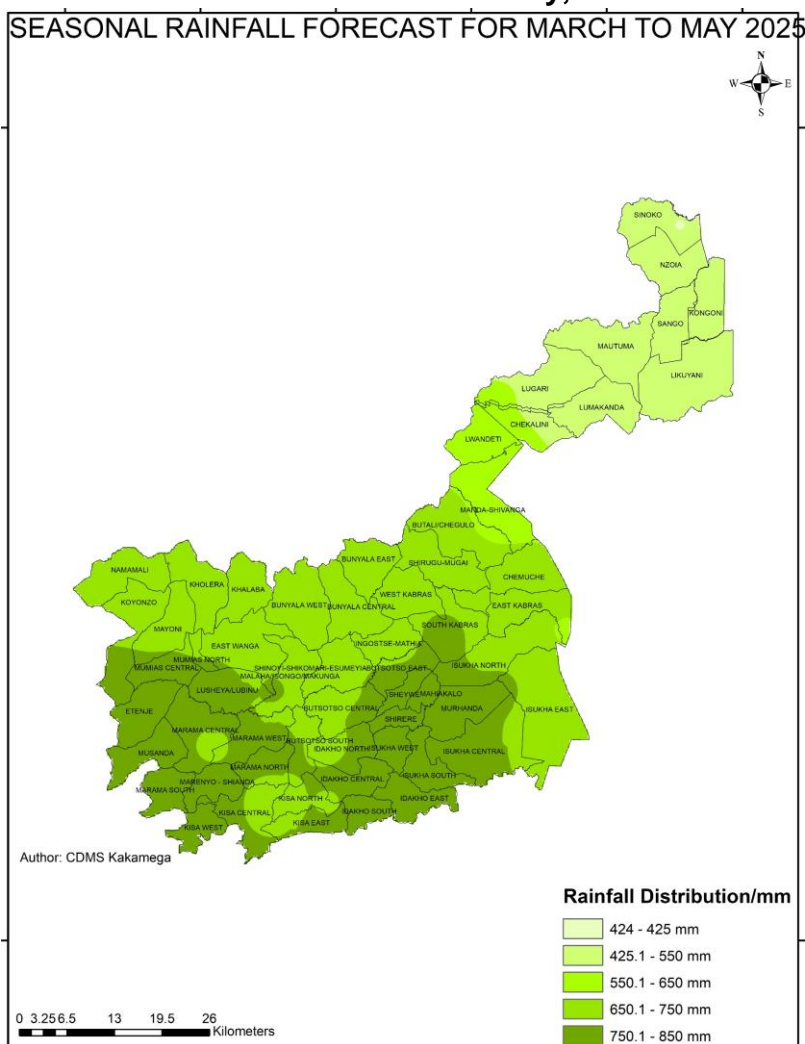




**REPUBLIC OF KENYA**  
**MINISTRY OF ENVIRONMENT, CLIMATE CHANGE AND FORESTRY**  
**KENYA METEOROLOGICAL DEPARTMENT**  
**KAKAMEGA COUNTY**  
**SEASONAL FORECAST FOR**  
**(MARCH, APRIL, MAY 2025)**

Date of issue: 28<sup>th</sup> January, 2025



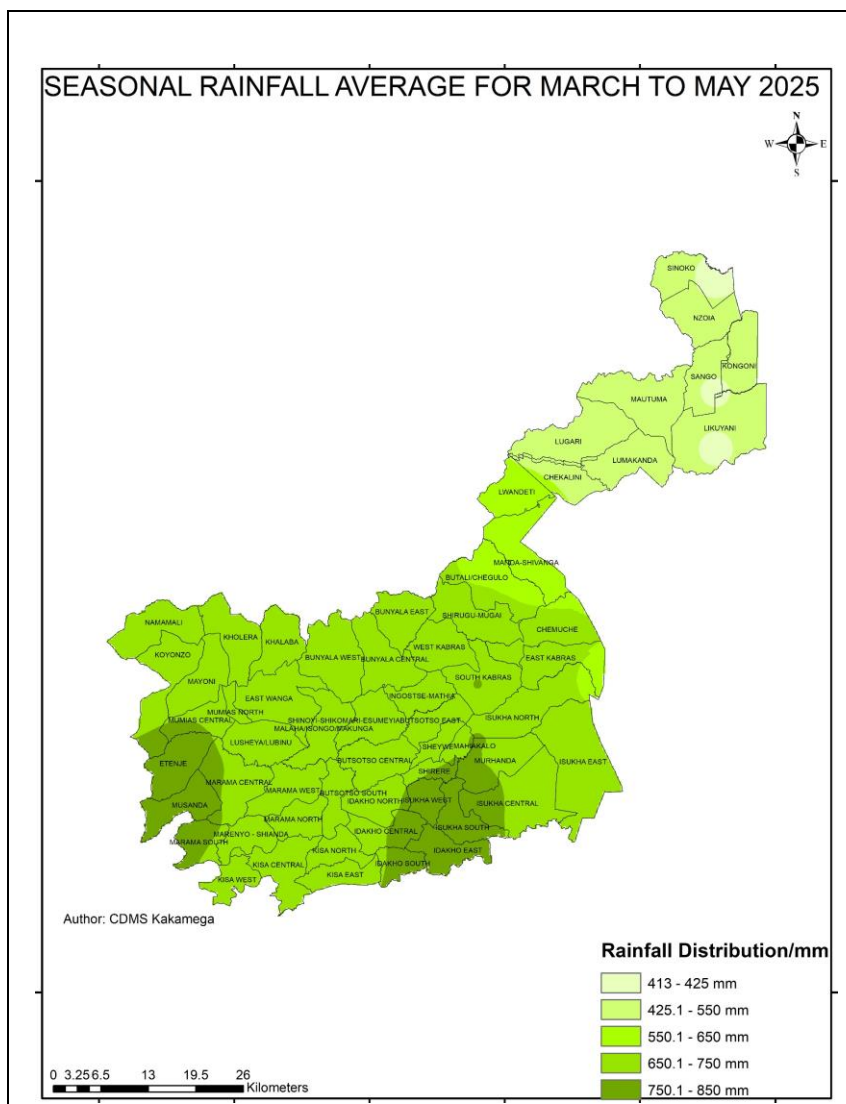
**Fig 1. Forecast rainfall in mm in *Kakamega* County during the (March, April, May 2025) rainy season.**

## SUMMARY OF RAINFALL OUTLOOK

The march to May period is the major rainfall season (Long Rains) over most parts of Kenya and much of equatorial Eastern Africa. Rainfall in *Kakamega* County during (*March, April, May, 2024*) rainy season is likely to be near normal to above average. The volume of rainfall is expected to be above average for this rainy season over the past 30 years. The map on page 1 (Fig 1) shows the volume of rainfall in mm that is forecast to fall in each part of *Kakamega* County during the coming rainy season.

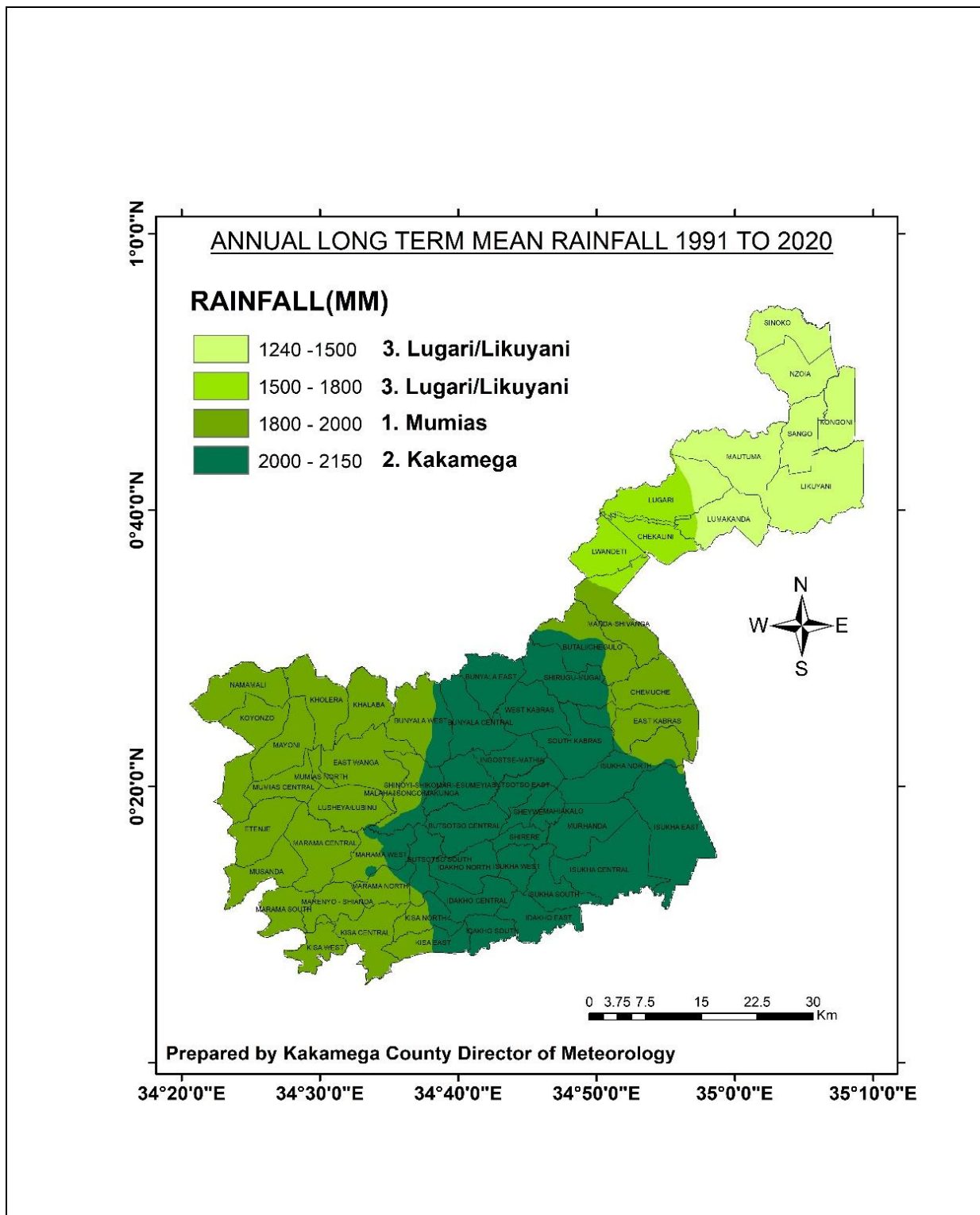
The temperature forecast indicates warmer than average temperatures are expected over the whole county.

The map below (Fig 2) shows normal rainfall in mm in each part of the county during the same three-month period over 30 years.



**Fig 2. Normal rainfall in mm in *Kakamega* County during the (*March, April, May 2025*) rainy season.**

*This map shows the average rainfall experienced during the same three-month period over 30 years between 1991 and 2020*



**Fig 3. The main climatic zones of Kakamega County**

## Forecast by climatic zone

**Zone(s):** 1. Mumias, 2. Kakamega, 3. Butali

**Start of rainy season (onset):** to continue from February 2025 with occasional dry spells.

**End of rainy season (cessation):** Rainfall likely to continue into June 2025

**Probable volume of rainfall:** 650-850 mm

**Distribution of rainfall over time:** Poor distribution of rainfall in the month of March 2024. Fair to good distribution during the month of April and May 2025. Most rainfall is expected during the month of April 2025.

### Commentary of County Director of Meteorology:

- The County is expected to experience near to above-average rainfall over most places.
- Showers and thunderstorms accompanied with lightning and strong winds are highly likely.
- Mud/landslides and floods are likely in areas that experience these negative impacts.
- Water borne diseases are likely to be on the rise in the County.
- Poor visibility and slippery roads
- The County should take full advantage of the positive impacts and at the same time avoid negative impacts that are likely to be experienced.

### Advice to farmers from Ministry of Agriculture:

- Consult your local agricultural extension officer for advice on how to plan farming activities in the light of this forecast

**Zone(s):** 4. Lugari, 5. Likuyani

**Start of rainy season (onset):** to continue from February 2025 with occasional dry spells.

**End of rainy season (cessation):** Rainfall likely to continue into June 2025.

**Probable volume of rainfall:** 400-650 mm

**Distribution of rainfall over time:** Poor distribution of rainfall in the month of March 2024. Fair to good distribution during the month of April and May 2025. Most rainfall is expected during the month of April 2025.

### Commentary of County Director of Meteorology:

- The County is expected to experience near to above-average rainfall over most places.
- Showers and thunderstorms accompanied with lightning and strong winds are highly likely.
- Mud/landslides and floods are likely in areas that experience these negative impacts.
- Water borne diseases are likely to be on the rise in the County.
- Poor visibility and slippery roads
- The County should take full advantage of the positive impacts and at the same time avoid negative impacts that are likely to be experienced.

**Advice to farmers from Ministry of Agriculture:**

- Consult your local agricultural extension officer for advice on how to plan farming activities in the light of this forecast

Please use this seasonal forecast in conjunction with the monthly and weekly weather forecasts for *Kakamega* County, issued by the County Director of Meteorology.

For further information, please contact:

County Director of Meteorology: Vincent N. Sakwa

Mobile:0722525902

Email: [kakamegамет@yahoo.com](mailto:kakamegамет@yahoo.com)

<https://web.facebook.com/KMDKakamega/>

<https://cdm.meteo.go.ke/forecast/6/Kakamega>

**You can find more information about the climate and weather in Kenya on the KMD website <http://www.meteo.go.ke/>**