



For further info:
Contact: Daniel M. Mbithi
Mobile No. 0715255171
Email: mbithi_d@yahoo.com
County Director of Meteorological Services Kitui County

Weekly Weather forecast for Kitui County

1.1 PART I: WEEKLY FORECAST FOR THE PERIOD 1st to 7th April 2025 Weather forecast Table

Sub County	Ward	Probable Total weekly amount (mm)	Probable weather							Winds (km/h kilometers per hour)	Temp (Tmax °C & Tmin °C)
			Notes: Light rains <1-5 mm; Moderate rains 5-20 mm; Heavy rains 20-50 mm; Very heavy rains >50 mm								
			Tue	Wed	Thur	Fri	Sat	Sun	Mon		
Mwingi West	Nguutani	>20mm	Light rain	No rain	Light rain	Light rain	Moderate rain	Moderate rain	Moderate rain	Easterly 14.4 km/h	Max 24-30 °C Min 18-20 °C
	Kyome/Thaana	>20mm	Light rain	Light rain	Light rain	Light rain	Moderate rain	Moderate rain	Moderate rain		
	Kiomo/Kyethani	>20mm	Light rain	Light rain	Light rain	Light rain	Moderate rain	Moderate rain	Moderate rain		
	Migwani	>20mm	Light rain	Light rain	Light rain	Light rain	Moderate rain	Light rain	Moderate rain		
Mwingi North	Ngomeni	>20mm	No rain	No rain	Light rain	Light rain	Light rain	Moderate rain	Light rain		
	Kyuso	>20mm	No rain	No rain	Light rain	Light rain	Moderate rain	Moderate rain	Moderate rain		

Sub County	Ward	Probable Total weekly amount (mm)	Probable weather Notes: Light rains <1-5 mm; Moderate rains 5-20 mm; Heavy rains 20-50 mm; Very heavy rains >50 mm							Winds (km/h kilometers per hour)	Temp (Tmax °C & Tmin °C)
			Tue	Wed	Thur	Fri	Sat	Sun	Mon	Weekly	Weekly
	Tseikuru	>20mm	<i>Light rain</i>	<i>Light rain</i>	<i>Light rain</i>	<i>Light rain</i>	<i>Moderate rain</i>	<i>Moderate rain</i>	<i>Moderate rain</i>	Easterly 14.4 km/h	Max 26-32 °C Min 20-22 °C
	Tharaka	>20mm	<i>Light rain</i>	<i>Light rain</i>	<i>Light rain</i>	<i>Light rain</i>	<i>Moderate rain</i>	<i>Heavy rain</i>	<i>Moderate rain</i>		
	Mumoni	>20mm	<i>Light rain</i>	Light rain	<i>Moderate rain</i>	<i>Light rain</i>	<i>Moderate rain</i>	<i>Moderate rain</i>	<i>Moderate rain</i>		
Mwingi Central	Central	>20mm	<i>No rain</i>	<i>No rain</i>	<i>Light rain</i>	<i>Light rain</i>	<i>Moderate rain</i>	<i>Moderate rain</i>	<i>Moderate rain</i>	Easterly 14.4 km/h	Max 26-31 °C Min 19-22 °C
	Kivou	>20mm	<i>No rain</i>	<i>No rain</i>	<i>Light rain</i>	<i>Light rain</i>	<i>Moderate rain</i>	<i>Moderate rain</i>	<i>Moderate rain</i>		
	Mui	>20mm	<i>No rain</i>	<i>No rain</i>	<i>Light rain</i>	<i>Light rain</i>	<i>Moderate rain</i>	<i>Moderate rain</i>	<i>Moderate rain</i>		
	Waita	>20mm	<i>No rain</i>	<i>No rain</i>	<i>Light rain</i>	<i>Moderate rain</i>	<i>Moderate rain</i>	<i>Light rain</i>	<i>Moderate rain</i>		
	Nuu	>20mm	<i>No rain</i>	<i>No rain</i>	<i>Light rain</i>	<i>Light rain</i>	<i>Moderate rain</i>	<i>Light rain</i>	<i>Light rain</i>		
	Nguni	>20mm	<i>No rain</i>	<i>No rain</i>	<i>Light rain</i>	<i>Light rain</i>	<i>Moderate rain</i>	<i>Light rain</i>	<i>Moderate rain</i>		
Kitui South	Ikanga/Kyatune	>20mm	<i>Light rain</i>	<i>Light rain</i>	<i>Light rain</i>	<i>Moderate rain</i>	<i>Heavy rain</i>	<i>Moderate rain</i>	<i>Moderate rain</i>	Easterly 14.4 km/h	Max 27-30 °C Min 19-22 °C
	Mutomo/Kibwea	>20mm	<i>Light rain</i>	<i>Light rain</i>	<i>Light rain</i>	<i>Light rain</i>	<i>Heavy rain</i>	<i>Moderate rain</i>	<i>Light rain</i>		
	Kanziko/Simisi	>20mm	<i>No rain</i>	<i>No rain</i>	<i>Light rain</i>	<i>Light rain</i>	<i>Moderate rain</i>	<i>Moderate rain</i>	<i>Light rain</i>		
	Mutha	>20mm	<i>Light rain</i>	<i>No rain</i>	<i>Light rain</i>	<i>Light rain</i>	<i>Moderate rain</i>	<i>Moderate rain</i>	<i>Light rain</i>		

Sub County	Ward	Probable Total weekly amount (mm)	Probable weather Notes: Light rains <1-5 mm; Moderate rains 5-20 mm; Heavy rains 20-50 mm; Very heavy rains >50 mm							Winds (km/h kilometers per hour)	Temp (Tmax °C & Tmin °C)
			Tue	Wed	Thur	Fri	Sat	Sun	Mon	Weekly	Weekly
	Ikutha	>20mm	No rain	No rain	Light rain	Moderate rain	Moderate rain	Moderate rain	Light rain		
	Athi	>20mm	Light rain	No rain	Light rain	Moderate rain	Moderate rain	Moderate rain	Light rain		
Kitui East	Chuluni	>20mm	Light rain	Light rain/Fog	Moderate rain	Light rain	Moderate rain	Moderate rain	Moderate rain	Easterly 14.4 km/h	Max 25-32 °C Min 18-22 °C
	Nzambani	>20mm	Light rain	Light rain/Fog	Moderate rain	Light rain	Moderate rain	Moderate rain	Moderate rain		
	Mutito/Kaliku	>20mm	No rain	Light rain	Light rain	Light rain	Moderate rain	Moderate rain	Moderate rain		
	Zombe/Mwitika	>20mm	Light rain	Light rain	Light rain	Light rain	Moderate rain	Moderate rain	Moderate rain		
	Voo/Kyamatu	>20mm	Moderate rain	No rain	Light rain	Moderate rain	Moderate rain	Moderate rain	Light rain		
	Endau/Malalani	>20mm	No rain	Light rain	Light rain	Light rain	Moderate rain	Moderate rain	Light rain		
Kitui Rural	Mbitini	>20mm	Light rain	Light rain	Light rain	Light rain	Moderate rain	Moderate rain	Moderate rain	Easterly 14.4 km/h	Max 26-29 °C Min 18-21 °C
	Kisasi	>20mm	Light rain	Light rain	Light rain	Light rain	Moderate rain	Moderate rain	Moderate rain		
	Kyangi	>20mm	Light rain	Light rain	Moderate rain	Moderate rain	Moderate rain	Moderate rain	Light rain		
	Yatta/Kwa Vonza	>20mm	Light rain	Moderate rain	Light rain	Light rain	Moderate rain	Moderate rain	Moderate rain		
Kitui West	Kauwi	>20mm	Light rain/Fog	Light rain/Fog	Light rain	Light rain	Moderate rain	Moderate rain	Moderate rain		

Sub County	Ward	Probable Total weekly amount (mm)	Probable weather							Winds (km/h kilometers per hour)	Temp (Tmax °C & Tmin °C)
			Notes: Light rains <1-5 mm; Moderate rains 5-20 mm; Heavy rains 20-50 mm; Very heavy rains >50 mm								
			Tue	Wed	Thur	Fri	Sat	Sun	Mon		
	Mutonguni	>20mm	Light rain/Fog	Light rain/Fog	Light rain	Light rain	Moderate rain	Moderate rain	Moderate rain	Easterly 14.4 km/h	Max 23-29 °C Min 16-19 °C
	Matinyani	>20mm	Light rain/Fog	Light rain/Fog	Light rain	Light rain	Moderate rain	Moderate rain	Moderate rain		
	Kwa Mutonga/ Kithumula	>20mm	Light rain	Light rain	Light rain	Light rain	Moderate rain	Moderate rain	Moderate rain		
Kitui Central	Kyangwithya East	>20mm	Light rain/Fog	Light rain/Fog	Light rain	Light rain	Moderate rain	Moderate rain	Moderate rain	Easterly 14.4 km/h	Max 25-30 °C Min 18-22 °C
	Kyangwithya West	>20mm	Light rain	Light rain/Fog	Moderate rain	Light rain	Moderate rain	Moderate rain	Moderate rain		
	Township	>20mm	Light rain	Light rain/Fog	Light rain	Light rain	Moderate rain	Moderate rain	Moderate rain		
	Mulango	>20mm	Light rain	Light rain/Fog	Light rain	Light rain	Moderate rain	Moderate rain	Moderate rain		
	Miambani	>20mm	No rain	Light rain	Light rain	Light rain	Light rain	Moderate rain	Light rain		

1.2 PART II: FURTHER ADVISORIES

SUMMARY ABOUT THE WEEKLY FORECAST:

Morning rains as well as afternoon and night showers and thunderstorms are expected over most places and intensify towards the end of the forecast period. Maximum temperatures are expected to range from 23°C - 32°C, while minimum temperatures are expected to range from 16°C - 22°C. Strong North easterly to Easterly winds with speeds exceeding 12.5 knots (6.5 m/s) are expected in most parts of the County. Community members advised to inculcate the culture of being “weather – ready”, “climate – smart” and “water – wise” as we navigate the unfamiliar and chaotic environment of a changing climate. This will help them adapt to a changing climate while at the same time mitigating the adverse effects of Climate Change and Variability, hence becoming more resilient to the vagaries of Climate Change. In light of this weather forecast, farmers are also advised to consult with respective local extension officers from the County Ministry of Agriculture and Livestock at ward level for more advice on the best farm practices.

Note: 1 mm of rainfall is equivalent to 1 litre of rainfall per square meter.

KEY OF SCIENTIFIC WORDS USED

Rainfall categories	
Range	Category
<5 mm	Light
5 - 20mm	Moderate
20 - 50mm	Heavy
>50mm	Very heavy
Rainfall coverage	
Term	Meaning
Most Places	Between 66% and 100%
Several Places	Between 33% and 66%
Few Places	Below 33%

Ushauri wa Idara ya Utabiri wa Hali ya Hewa:
Mvua za Masika zinaendelea kunyesha karibu sehemu zote za Kaunti ya Kitui, kwa hivyo wakulima wanashauriwa wamalize kazi ya upanzi wa mbegu ifikapo mwisho wa wiki hii.

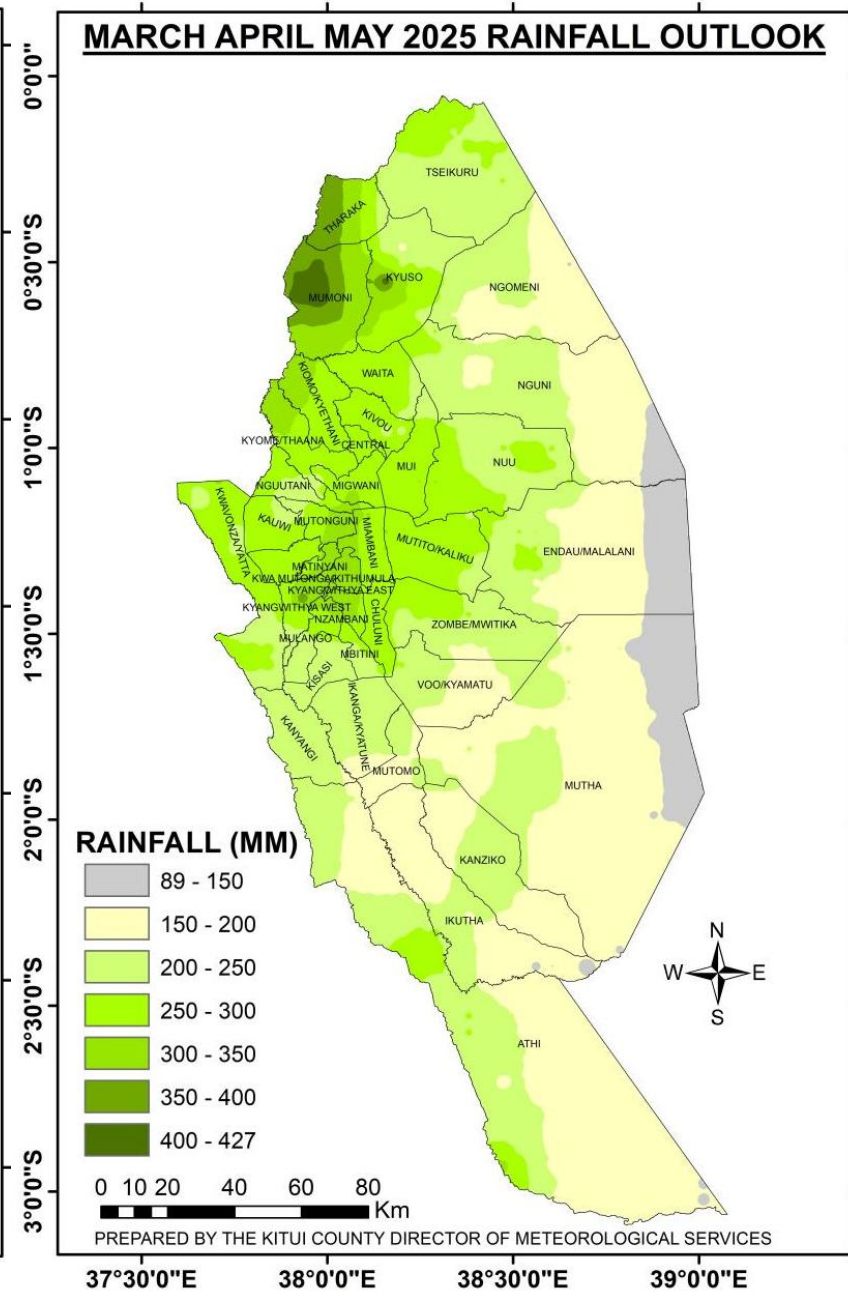
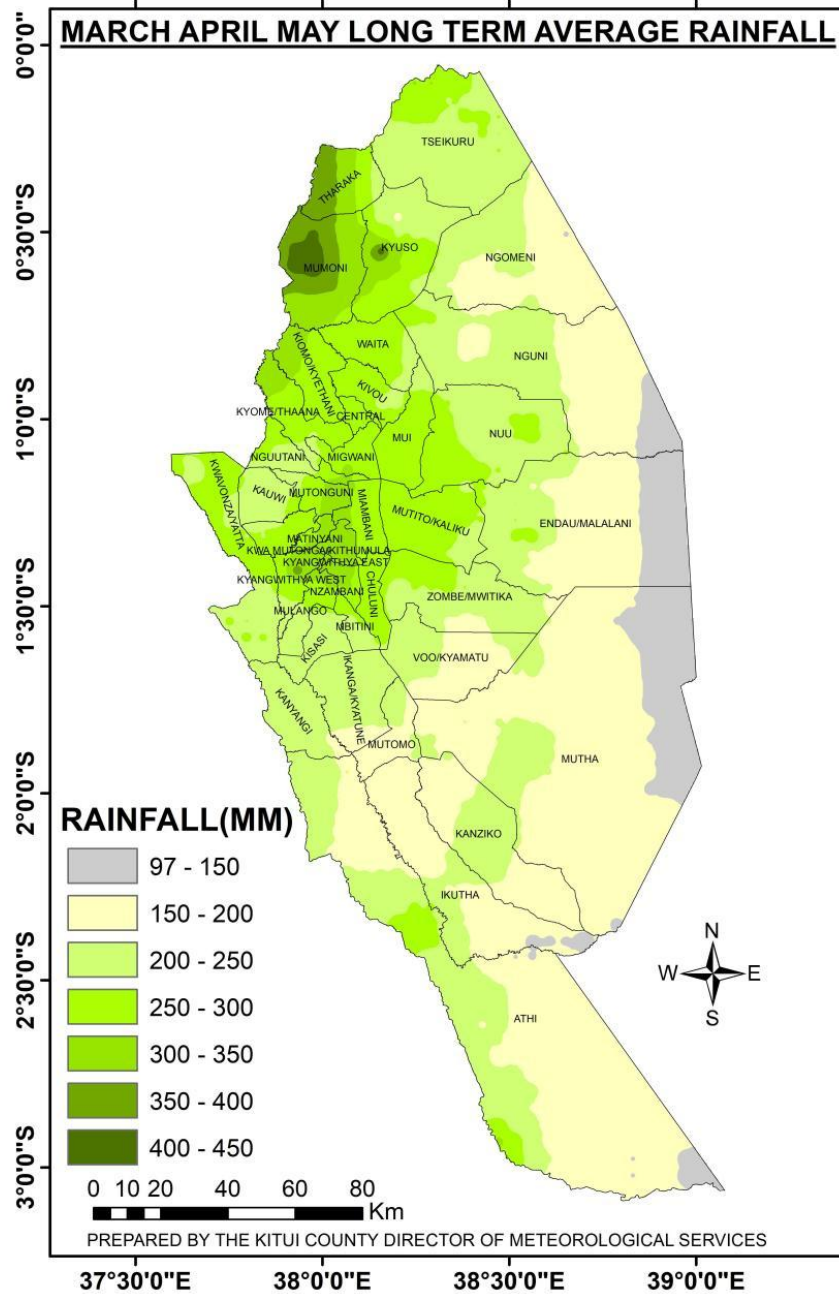
For further information, please contact:



Daniel M. Mbithi
County Director of Meteorological Services
Mobile: 0715255171
Email: mbithi_d@yahoo.com

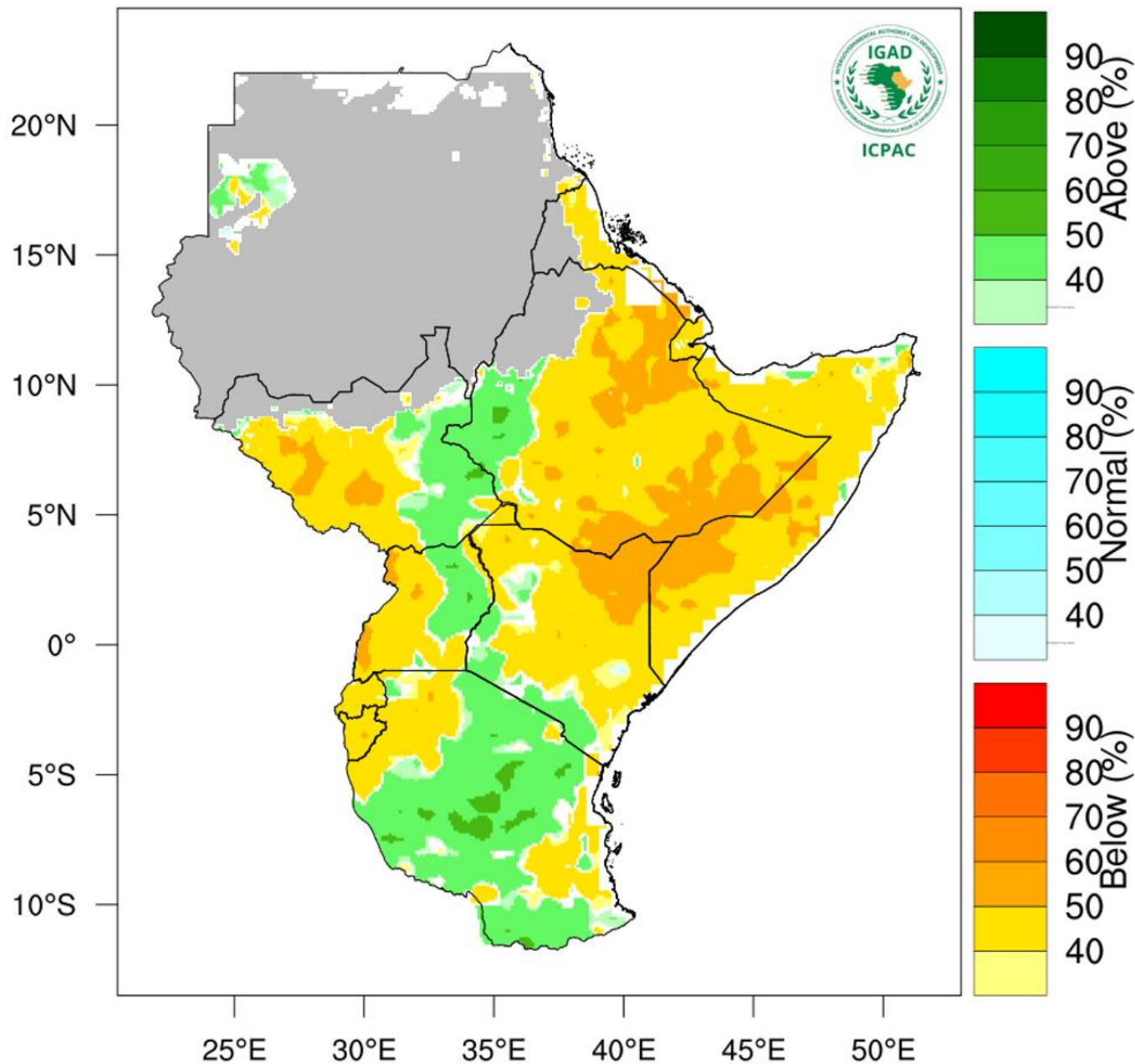
You can find more information about the climate and weather in Kenya on the KMD website <http://www.meteo.go.ke/>

Annex I: Rainfall Climatology versus Rainfall Forecast for the months of March to May (MAM) 2025



NB: The expected rainfall amounts in the county are likely to be normal to below the long-term average for the season. Onset is expected during the 4th week of March to 1st week of April.

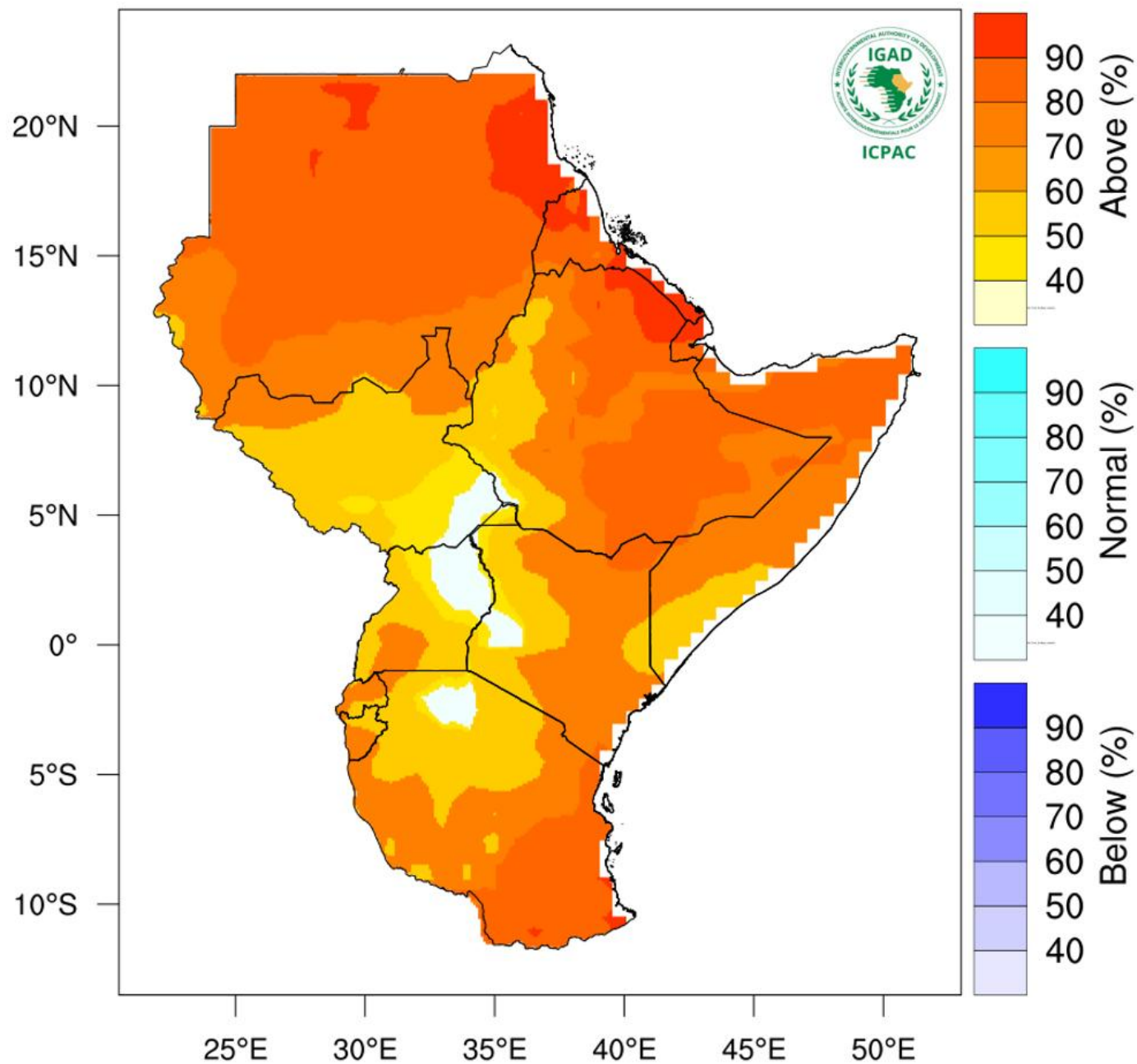
Rainfall Probabilistic Forecast for Mar-May 2025



NB: Near to below normal conditions expected over most parts of the County between March and May 2025

Annex III: Temperature forecast for the months of March to May

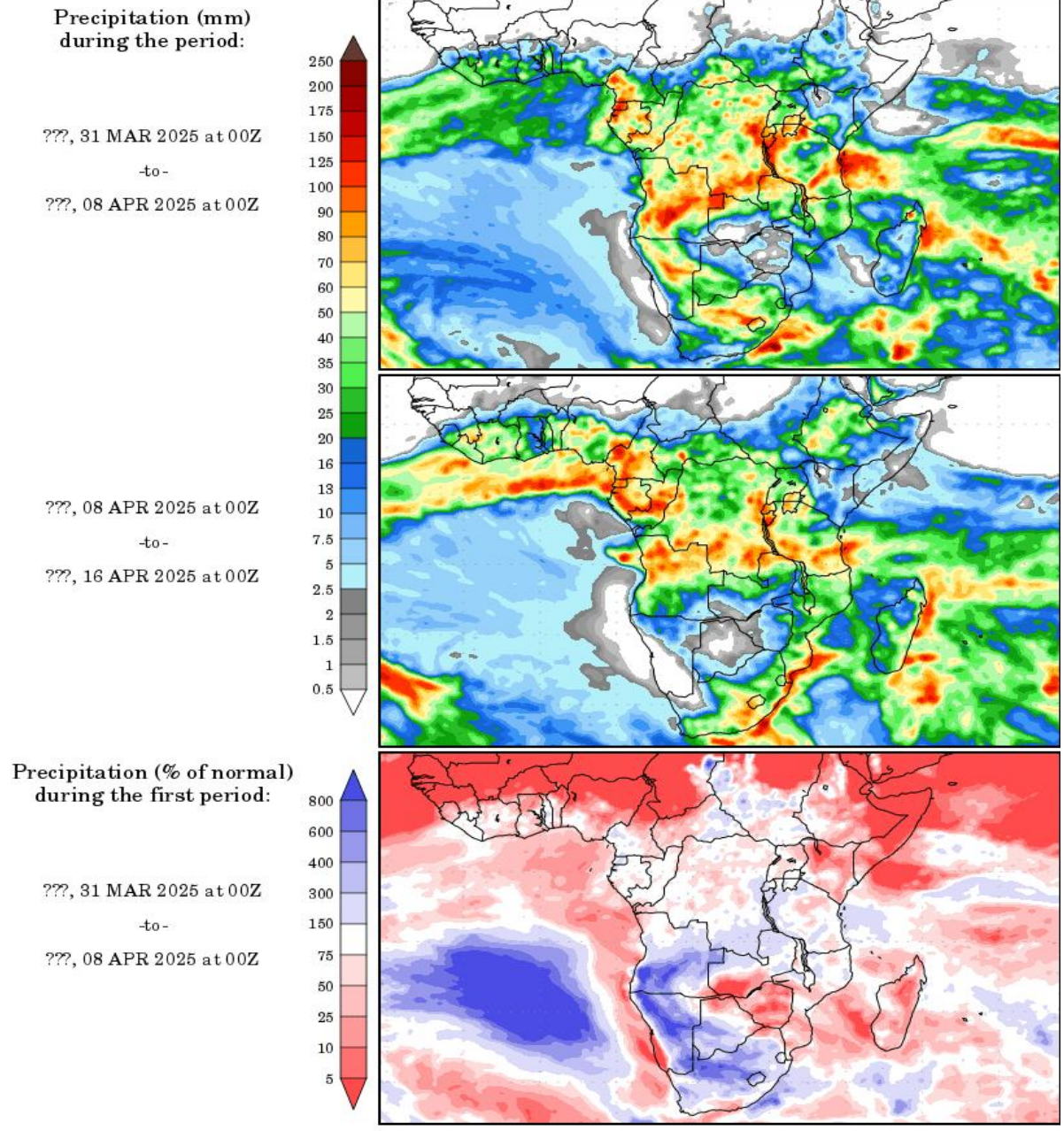
Temperature Forecast for Mar-May 2025



NB: Warmer than usual conditions indicated over most parts of Kitui County between March and May 2025

Annex IV: Rainfall forecast for 31st March to 16th April, 2025

Precipitation Forecasts



Precipitation forecasts from the National Centers for Environmental Prediction.
Normal rainfall derived from Xie-Arkin (CMAP) Monthly Climatology for 1979-2003.
Forecast Initialization Time: 00Z31MAR2025

NB: Below normal conditions expected over most parts of the County between 31st March to 16th April, 2025