



**REPUBLIC OF KENYA**  
**MINISTRY OF ENVIRONMENT, CLIMATE CHANGE AND FORESTRY**  
**KENYA METEOROLOGICAL DEPARTMENT**

*COUNTY METEOROLOGICAL SERVICES, LAIKIPIA COUNTY*  
*P.O. BOX 192, 10400 NANYUKI*

*e-mail: [kmdcdmlaikipia@gmail.com](mailto:kmdcdmlaikipia@gmail.com), CDMS: Njiru David: Tel. 0721218207*

*For further information, please contact: Director KMD*

*Tel: +254724255153/4*

*e-mail: [director@meteo.go.ke](mailto:director@meteo.go.ke), [info@meteo.go.ke](mailto:info@meteo.go.ke) Website: <http://www.meteo.go.ke>*

*Ref: MET/Laikipia County/04/25*

*Date of issue; 14 April, 2025*

**WEATHER FORECAST FOR THE NEXT SEVEN DAYS VALID 15 - 21 April, 2025**

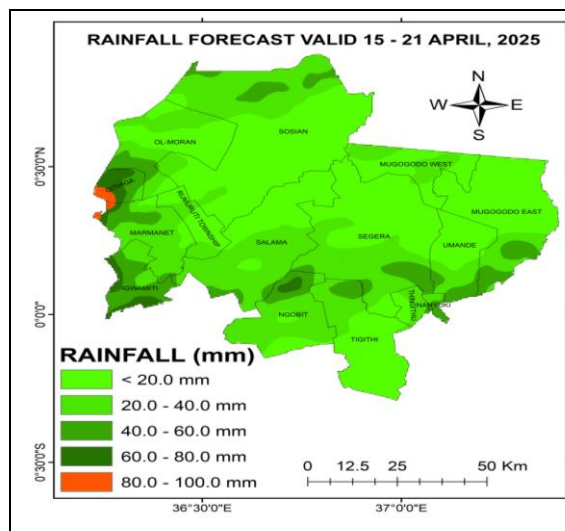
**Forecast for the next Seven days (15 - 21 April, 2025) indicates;**

- Seasonal rainfall expected to continue over several places
- Moderate to heavy amounts of rainfall expected mainly in the Second half of the forecasting period
- The Maximum temperatures expected to range between 20 - 30°C and the (Minimum) temperatures to range 06 - 20°C

**Review of weather for the last seven-days (08 – 14 April, 2025)**

- Moderate to heavy amounts of rainfall were observed over several places including Sipili, Ol Pejeta, Nanyuki, Survey, Lamuria etc
- *Comparing the last two weeks the precipitation amounts were maintained.*
- Both the day time (Max) temperatures and the Night time (Min) temperatures decreased

**Expected Rainfall Distribution for the Next Seven Days (15 - 21 April, 2025)**



Morning clouds with light rains, afternoon showers and thunderstorms sometimes extending to the night expected over few places.

Between 20.0 – 100.0 mm of cumulated weekly rainfall is likely as indicated in the adjacent rainfall forecast map.

**Detailed Weather Forecast for the Next Seven Days Valid 15 - 21 April, 2025**

REGION	TIME	TUESDAY 15/04/2025	WEDNESDAY 16/04/2025	THURSDAY 17/04/2025	FRIDAY 18/04/2025	SATURDAY 19/04/2025	SUNDAY 20/04/2025	MONDAY 21/04/2025
LAIKIP IA NORTH	Morning	Cloudy/ Sunny	Sunny	Cloudy/Su unny	Sunny	Cloudy/S unny	Cloudy/ Sunny	Cloudy/S unny
	After noon	Showers over Few places	Showers over Few places	Showers over Few places	Show ers & TS over Few Places	Showers over several Places	Showers over Few Places	Showers over Few Places
	Night	Partly Cloudy	Partly Cloudy	Partly Cloudy	Partly Cloudy	Partly Cloudy	Partly Cloudy	Partly Cloudy
TEMPS	Max/ Min	25/14	27/12	26/12	25/12	24/10	24/10	24/10
LAIKIP IA EAST	Morning	Cloudy/ Sunny	Sunny	Cloudy/Su unny	Cloudy/ Sunny	Cloudy/S unny	Cloudy/ Sunny	Cloudy/S unny
	After noon	Showers & TS over Few places	Showers over Few places	Showers over Few places	Show ers & TS over Few Places	Showers over several Places	Showers over Several Places	Showers over Few places
	Night	Partly Cloudy	Partly Cloudy	Partly Cloudy	Partly Cloudy	Partly Cloudy	Partly Cloudy	Partly Cloudy
TEMPS	Max/ Min	24/10	25/10	24/12	24/10	23/10	22/09	25/09
LAIKIP IA WEST	Morning	Cloudy /Sunny	Cloudy/Sun ny	Sunny	Cloudy/ Sunny	Cloudy/S unny	Cloudy/ Sunny	Cloudy/S unny
	After noon	Show er & TS over Few places	Showers over Few places	Showers & TS over Few places	Show ers & TS over Few Places	Showers & TS over Few Places	Showers over several Places	Showers over Few places
	Night	Partly/ Cloudy	Partly Cloudy	Partly Cloudy	Partly Cloudy	Partly Cloudy	Partly Cloudy	Partly Cloudy
TEMPS	Max/ Min	24/08	25/08	25/07	20/07	20/07	19/06	24/07

- **TS – Thunderstorms; AWS - Automatic Weather Station**
- **Further outlook indicates that the season rains are expected to continue in the month of April and May, 2025.**
- **Be aware of sudden strong winds that may cause tree breakage or blow loafs**
- **On average the daily Maximum and Minimum temperatures are expected to reduce due to morning cloudiness and showery precipitation over most places**

**COMPARING CUMMULATED RAINFALL AMOUNTS FOR THE LAST TWO WEEKS**

<b>STATION</b>	<b>01 – 07 April, 2025</b>	<b>08 – 14 April, 2025</b>
Mutara Orchards (Office Area)	14.7 mm	2.0 mm
Lamuria Met. Stn.	24.0 mm	24.0 mm
Rumuruti	14.1 mm	<b>52.6 mm</b>
Muhotetu CC	-	-
Sipili	19.0 mm	<b>97.0 mm</b>
Ngárua (Kinamba – AWS)	1.1 mm	24.5 mm
OI Mysor Sosian	-	-
Mugie Conservancy (Centre)	-	-
Laikipia Airbase (Nanyuki)	37.3 mm	29.9 mm
Kimanzo Pri. Sch AWS	8.5 mm	Nil
Survey Sec. Sch. AWS	2.4 mm	36.0 mm
Lokusero Sec. Sch. AWS	24.2 mm	8.7 mm
Dol Dol Boys Sch. (AWS)	11.1 mm	0.8 mm
Ngobit Police Stn. AWS	20.7 mm	3.0 mm
<b>Lol-Daiga Stations</b>		
1). Barrier	Nil	5.2 mm
2). Central	Nil	16.0 mm
3). Northern	Nil	Nil
<b>OI Pejeta Rainfall Stations</b>		
1). Kamock	42.0 mm	23.0 mm
2). OPC HQ site	42.0 mm	Nil
3). Golf 3	18.0 mm	<b>51.0 mm</b>
4). Oscar 2 - 5	<b>99.0 mm</b>	<b>54.0 mm</b>
5). Research	44.0 mm	16.5 mm
6). Sirima	<b>58.0 mm</b>	9.0 mm
7). Mutara (Zulu 3)	25.0 mm	11.0 mm
<b>OI Jogi Conservancy Rainfall Stations</b>		
1). Main House	4.3 mm	Nil
2). Marula	2.6 mm	16.8 mm
<b>Borana Conservancy Rainfall Stations</b>		
1). Headquarters	6.0 mm	8.0 mm
2). Waitabit	Nil	3.0 mm

<b>KEY SCIENTIFIC TERMS USED IN THE FORECAST</b>			
<b>RAINFALL CATEGORIES</b>		<b>RAINFALL COVERAGE</b>	
		<b>TERMs</b>	<b>MEANING</b>
< 5 mm	Light	Most places	Between 67% and 100%
5 – 20 mm	Moderate	Several Places	Between 33% and 67%
20 – 50 mm	Heavy	Few places	Below 33%
> 50 mm	Very heavy		

**Note;** *It's important to follow up this weekly forecast with the 24hr forecast issued daily by the Kenya Meteorological Department.*