



REPUBLIC OF KENYA
MINISTRY OF ENVIRONMENT, CLIMATE CHANGE & FORESTRY
KENYA METEOROLOGICAL DEPARTMENT
COUNTY DIRECTOR OF METEOROLOGICAL SERVICES – MAKUENI COUNTY

For further info:

Contact: Jonathan M. Ngayai

Mobile No. 0795929926

Email: kmdmakuenicounty@gmail.com

County Director of Meteorological Services (CDMS) - Makueni County

Weekly weather forecast for Makueni County valid 22nd – 28th April, 2025

1. PART I: WEEKLY FORECAST FOR THE PERIOD 22nd – 28th April, 2025

Detailed Weather Forecast by Wards.

| SUB COUNTY | Ward | Probable weather | | | | | | | Probable Total weekly amount (mm) |
|------------|------------------------|---|---|---|--|--|--|--|-----------------------------------|
| | | Notes: Light rains < 1-5 mm; Moderate (Mod.) rains 5-20 mm; Heavy rains > 20 mm | | | | | | | |
| | | Tue | Wed | Thu | Fri | Sat | Sun | Mon | |
| MAKUENI | Kitise /Kithuki | Heavy rains Max 27 °c Min 20 °c Max Wind: From SE at 4 m/s | Mod. rains Max 27 °c Min 19 °c Max Wind: From SE at 3 m/s | Mod. rains Max 26 °c Min 19 °c Max Wind: From SE at 5 m/s | Dry day Max 28 °c Min 19 °c Max Wind: From SE at 4 m/s | Mod. rains Max 28 °c Min 20 °c Max Wind: From SE at 4 m/s | Dry day Max 29 °c Min 19 °c Max Wind: From SE at 4 m/s | Dry day Max 29 °c Min 20 °c Max Wind: From SE at 4 m/s | 90.0 – 100.0 mm |
| | Kathonzweni | Heavy rains Max 26 °c Min 19 °c Max Wind: From SE at 4 m/s | Mod. rains Max 25 °c Min 19 °c Max Wind: From SE at 3 m/s | Mod. rains Max 26 °c Min 18 °c Max Wind: From SE at 4 m/s | Mod. rains Max 28 °c Min 19 °c Max Wind: From SE at 4 m/s | Dry day Max 27 °c Min 18 °c Max Wind: From SE at 3 m/s | Dry day Max 27 °c Min 18 °c Max Wind: From SE at 3 m/s | Dry day Max 27 °c Min 19 °c Max Wind: From SE at 3 m/s | 90.0 – 100.0 mm |
| | Mavindini | Heavy rains Max 26 °c Min 19 °c Max Wind: From SE at 4 m/s | Mod. rains Max 25 °c Min 19 °c Max Wind: From SE at 3 m/s | Mod. rains Max 27 °c Min 19 °c Max Wind: From SE at 5 m/s | Light rains Max 27 °c Min 19 °c Max Wind: From SE at 3 m/s | Light rains Max 27 °c Min 18 °c Max Wind: From SE at 3 m/s | Dry day Max 28 °c Min 19 °c Max Wind: From SE at 4 m/s | Dry day Max 28 °c Min 20 °c Max Wind: From SE at 3 m/s | 80.0 – 90.0 mm |
| | Muvau /Kikumini | Heavy rains Max 26 °c Min 19 °c Max Wind: From NE at 5 m/s | Mod. rains Max 25 °c Min 19 °c Max Wind: From NE at 3 m/s | Mod. rains Max 27 °c Min 18 °c Max Wind: From NE at 5 m/s | Mod. rains Max 26 °c Min 18 °c Max Wind: From NE at 4 m/s | Dry day Max 26 °c Min 18 °c Max Wind: From NE at 4 m/s | Dry day Max 27 °c Min 19 °c Max Wind: From NE at 3 m/s | Dry day Max 28 °c Min 19 °c Max Wind: From NE at 3 m/s | 110.0 – 120.0 mm |

| | | | | | | | | | |
|-------------------------|--------------------|---|---|---|---|---|---|---|---------------------|
| | Wote | <i>Heavy rains Max 25 °c Min 18 °c Max Wind: From SE at 4 m/s</i> | <i>Mod. rains Max 24 °c Min 18 °c Max Wind: From SE at 3 m/s</i> | <i>Mod. rains Max 26 °c Min 17 °c Max Wind: From SE at 4 m/s</i> | <i>Mod. rains Max 25 °c Min 18 °c Max Wind: From SE at 3 m/s</i> | <i>Light rains Max 26 °c Min 17 °c Max Wind: From SE at 3 m/s</i> | <i>Light rains Max 26 °c Min 17 °c Max Wind: From SE at 3 m/s</i> | <i>Light rains Max 26 °c Min 19 °c Max Wind: From SE at 5 m/s</i> | 110.0 – 120.0 mm |
| | Mbitini | <i>Heavy rains Max 25 °c Min 18 °c Max Wind: From SE at 5 m/s</i> | <i>Mod. rains Max 24 °c Min 18 °c Max Wind: From SE at 5 m/s</i> | <i>Mod. rains Max 26 °c Min 17 °c Max Wind: From SE at 5 m/s</i> | <i>Mod. rains Max 26 °c Min 18 °c Max Wind: From SE at 4 m/s</i> | <i>Light rains Max 26 °c Min 17 °c Max Wind: From SE at 4 m/s</i> | <i>Dry day Max 27 °c Min 17 °c Max Wind: From SE at 4 m/s</i> | <i>Dry day Max 27 °c Min 18 °c Max Wind: From SE at 3 m/s</i> | 80.0 – 90.0 mm |
| | NzaKiKa | <i>Heavy rains Max 26 °c Min 19 °c Max Wind: From SE at 4 m/s</i> | <i>Mod. rains Max 25 °c Min 19 °c Max Wind: From SE at 4 m/s</i> | <i>Light rains Max 26 °c Min 18 °c Max Wind: From SE at 5 m/s</i> | <i>Mod. rains Max 26 °c Min 19 °c Max Wind: From SE at 4 m/s</i> | <i>Light rains Max 26 °c Min 18 °c Max Wind: From SE at 3 m/s</i> | <i>Dry day Max 27 °c Min 19 °c Max Wind: From SE at 3 m/s</i> | <i>Light rains Max 27 °c Min 20 °c Max Wind: From SE at 3 m/s</i> | 130.0 – 140.0 mm |
| KIBWEZI EAST | Masongaleni | <i>Mod. rains Max 26 °c Min 19 °c Max Wind: From SE at 4 m/s</i> | <i>Heavy rains Max 25 °c Min 20 °c Max Wind: From SE at 4 m/s</i> | <i>Light rains Max 26 °c Min 19 °c Max Wind: From SE at 3 m/s</i> | <i>Light rains Max 27 °c Min 19 °c Max Wind: From SE at 5 m/s</i> | <i>Light rains Max 27 °c Min 19 °c Max Wind: From SE at 5 m/s</i> | <i>Dry day Max 28 °c Min 19 °c Max Wind: From SE at 4 m/s</i> | <i>Dry day Max 29 °c Min 20 °c Max Wind: From SE at 4 m/s</i> | 20.0 – 30.0 mm |
| | IvinNza | <i>Mod. rains Max 26 °c Min 20 °c Max Wind: From SE at 4 m/s</i> | <i>Mod. rains Max 25 °c Min 19 °c Max Wind: From SE at 3 m/s</i> | <i>Mod. rains Max 25 °c Min 19 °c Max Wind: From SE at 3 m/s</i> | <i>Light rains Max 26 °c Min 19 °c Max Wind: From SE at 4 m/s</i> | <i>Light rains Max 26 °c Min 19 °c Max Wind: From SE at 4 m/s</i> | <i>Dry day Max 28 °c Min 19 °c Max Wind: From SE at 3 m/s</i> | <i>Dry day Max 28 °c Min 19 °c Max Wind: From SE at 4 m/s</i> | 30.0 – 40.0 mm |
| | Mtito Andei | <i>Mod. rains Max 27 °c Min 21 °c Max Wind: From SE at 4 m/s</i> | <i>Heavy rains Max 26 °c Min 21 °c Max Wind: From SE at 3 m/s</i> | <i>Mod. rains Max 26 °c Min 20 °c Max Wind: From SE at 3 m/s</i> | <i>Light rains Max 28 °c Min 20 °c Max Wind: From SE at 5 m/s</i> | <i>Light rains Max 28 °c Min 20 °c Max Wind: From SE at 5 m/s</i> | <i>Dry day Max 29 °c Min 20 °c Max Wind: From SE at 4 m/s</i> | <i>Dry day Max 30 °c Min 20 °c Max Wind: From SE at 3 m/s</i> | 20.0 – 30.0 mm |
| | Thange | <i>Mod. rains Max 26 °c</i> | <i>Heavy rains Max 25 °c</i> | <i>Light rains Max 26 °c</i> | <i>Dry day Max 27 °c</i> | <i>Dry day Max 27 °c</i> | <i>Dry day Max 28 °c</i> | <i>Dry day Max 29 °c</i> | 20.0 – 30.0 |

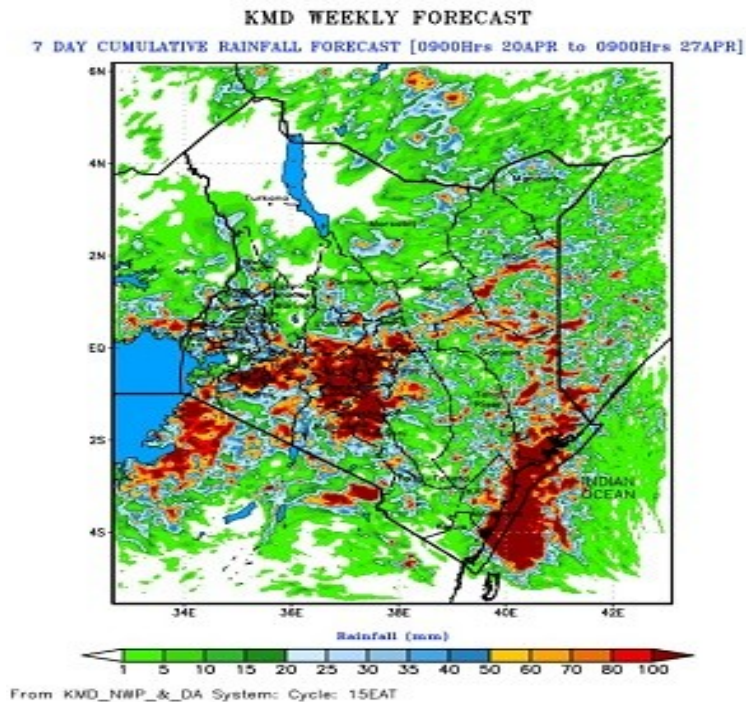
| | | | | | | | | | |
|-------------------------|-----------------------------|---|---|---|---|--|---|---|---------------------|
| | | <i>Min 19 °c Max Wind: From SE at 4 m/s</i> | <i>Min 20 °c Max Wind: From SE at 4 m/s</i> | <i>Min 19 °c Max Wind: From SE at 3 m/s</i> | <i>Min 19 °c Max Wind: From SE at 5 m/s</i> | <i>Min 18 °c Max Wind: From SE at 5 m/s</i> | <i>Min 19 °c Max Wind: From SE at 5 m/s</i> | <i>Min 20 °c Max Wind: From SE at 4 m/s</i> | mm |
| KIBWEZI WEST | Makindu | <i>Light rains Max 26 °c Min 19 °c Max Wind: From SE at 4 m/s</i> | <i>Mod. rains Max 26 °c Min 18 °c Max Wind: From SE at 4 m/s</i> | <i>Mod. rains Max 26 °c Min 18 °c Max Wind: From SE at 4 m/s</i> | <i>Dry day Max 27 °c Min 19 °c Max Wind: From SE at 5 m/s</i> | <i>Mod. rains Max 27 °c Min 18 °c Max Wind: From SE at 5 m/s</i> | <i>Dry day Max 28 °c Min 19 °c Max Wind: From SE at 5 m/s</i> | <i>Dry day Max 28 °c Min 19 °c Max Wind: From SE at 5 m/s</i> | 20.0 – 30.0 mm |
| | Emali /Mulala | <i>Heavy rains Max 25 °c Min 18 °c Max Wind: From SE at 5 m/s</i> | <i>Mod. rains Max 24 °c Min 18 °c Max Wind: From SE at 4 m/s</i> | <i>Mod. rains Max 26 °c Min 18 °c Max Wind: From SE at 5 m/s</i> | <i>Light rains Max 25 °c Min 18 °c Max Wind: From SE at 4 m/s</i> | <i>Dry day Max 26 °c Min 17 °c Max Wind: From SE at 4 m/s</i> | <i>Dry day Max 27 °c Min 19 °c Max Wind: From SE at 3 m/s</i> | <i>Dry day Max 27 °c Min 19 °c Max Wind: From SE at 3 m/s</i> | 100.0 – 110.0 mm |
| | Nguu /Masumba | <i>Heavy rains Max 26 °c Min 19 °c Max Wind: From SE at 4 m/s</i> | <i>Mod. rains Max 24 °c Min 18 °c Max Wind: From SE at 3 m/s</i> | <i>Light rains Max 26 °c Min 18 °c Max Wind: From SE at 4 m/s</i> | <i>Light rains Max 26 °c Min 19 °c Max Wind: From SE at 4 m/s</i> | <i>Dry day Max 26 °c Min 18 °c Max Wind: From SE at 3 m/s</i> | <i>Dry day Max 27 °c Min 18 °c Max Wind: From SE at 3 m/s</i> | <i>Dry day Max 27 °c Min 19 °c Max Wind: From SE at 3 m/s</i> | 60.0 – 70.0 mm |
| | Nguumo | <i>Light rains Max 26 °c Min 19 °c Max Wind: From SE at 4 m/s</i> | <i>Heavy rains Max 25 °c Min 19 °c Max Wind: From SE at 5 m/s</i> | <i>Mod. rains Max 26 °c Min 19 °c Max Wind: From SE at 4 m/s</i> | <i>Dry day Max 27 °c Min 19 °c Max Wind: From SE at 5 m/s</i> | <i>Dry day Max 27 °c Min 19 °c Max Wind: From SE at 5 m/s</i> | <i>Dry day Max 28 °c Min 19 °c Max Wind: From SE at 4 m/s</i> | <i>Dry day Max 28 °c Min 19 °c Max Wind: From SE at 4 m/s</i> | 30.0 – 40.0 mm |
| | Kikumbulyu North | <i>Mod. rains Max 27 °c Min 20 °c Max Wind: From SE at 4 m/s</i> | <i>Mod. rains Max 27 °c Min 20 °c Max Wind: From SE at 4 m/s</i> | <i>Mod. rains Max 27 °c Min 19 °c Max Wind: From SE at 3 m/s</i> | <i>Light rains Max 28 °c Min 20 °c Max Wind: From SE at 5 m/s</i> | <i>Dry day Max 28 °c Min 20 °c Max Wind: From SE at 4 m/s</i> | <i>Dry day Max 29 °c Min 19 °c Max Wind: From SE at 4 m/s</i> | <i>Dry day Max 29 °c Min 20 °c Max Wind: From SE at 4 m/s</i> | 20.0 – 30.0 mm |
| | Kikumbulyu South | <i>Light rains Max 26 °c Min 19 °c</i> | <i>Heavy rains Max 25 °c Min 19 °c</i> | <i>Mod. rains Max 26 °c Min 19 °c</i> | <i>Dry day Max 27 °c Min 19 °c</i> | <i>Dry day Max 27 °c Min 19 °c</i> | <i>Dry day Max 28 °c Min 19 °c</i> | <i>Dry day Max 28 °c Min 19 °c</i> | 20.0 – 30.0 mm |

| | | <i>Max Wind: From SE at 4 m/s</i> | <i>Max Wind: From SE at 5 m/s</i> | <i>Max Wind: From SE at 4 m/s</i> | <i>Max Wind: From SE at 5 m/s</i> | <i>Max Wind: From SE at 5 m/s</i> | <i>Max Wind: From SE at 4 m/s</i> | <i>Max Wind: From SE at 4 m/s</i> | |
|---------------|----------------------|---|---|---|--|---|---|---|---------------------|
| KILOME | Kasikeu | <i>Heavy rains Max 25 °c Min 18 °c Max Wind: From SE at 5 m/s</i> | <i>Mod. rains Max 25 °c Min 18 °c Max Wind: From SE at 4 m/s</i> | <i>Light rains Max 25 °c Min 17 °c Max Wind: From SE at 5 m/s</i> | <i>Mod. rains Max 25 °c Min 18 °c Max Wind: From SE at 4 m/s</i> | <i>Dry day Max 26 °c Min 17 °c Max Wind: From SE at 4 m/s</i> | <i>Dry day Max 28 °c Min 18 °c Max Wind: From SE at 4 m/s</i> | <i>Dry day Max 28 °c Min 19 °c Max Wind: From SE at 3 m/s</i> | 100.0 – 110.0 mm |
| | Kiima Kiu | <i>Heavy rains Max 24 °c Min 17 °c Max Wind: From SE at 4 m/s</i> | <i>Mod. rains Max 24 °c Min 17 °c Max Wind: From SE at 5 m/s</i> | <i>Mod. rains Max 24 °c Min 16 °c Max Wind: From SE at 5 m/s</i> | <i>Mod. rains Max 25 °c Min 17 °c Max Wind: From SE at 5 m/s</i> | <i>Dry day Max 25 °c Min 16 °c Max Wind: From SE at 5 m/s</i> | <i>Dry day Max 27 °c Min 16 °c Max Wind: From SE at 4 m/s</i> | <i>Dry day Max 27 °c Min 17 °c Max Wind: From SE at 4 m/s</i> | 60.0 – 70.0 mm |
| | Mukaa | <i>Heavy rains Max 23 °c Min 16 °c Max Wind: From SE at 5 m/s</i> | <i>Mod. rains Max 22 °c Min 16 °c Max Wind: From SE at 4 m/s</i> | <i>Light rains Max 23 °c Min 16 °c Max Wind: From SE at 5 m/s</i> | <i>Mod. rains Max 23 °c Min 17 °c Max Wind: From SE at 4 m/s</i> | <i>Dry day Max 24 °c Min 15 °c Max Wind: From SE at 3 m/s</i> | <i>Dry day Max 24 °c Min 16 °c Max Wind: From SE at 4 m/s</i> | <i>Dry day Max 24 °c Min 16 °c Max Wind: From SE at 3 m/s</i> | 100.0 – 110.0 mm |
| MBOONI | Tulimani | <i>Heavy rains Max 24 °c Min 19 °c Max Wind: From SE at 4 m/s</i> | <i>Mod. rains Max 24 °c Min 18 °c Max Wind: From SE at 3 m/s</i> | <i>Mod. rains Max 25 °c Min 18 °c Max Wind: From SE at 4 m/s</i> | <i>Mod. rains Max 25 °c Min 18 °c Max Wind: From SE at 4 m/s</i> | <i>Dry day Max 26 °c Min 18 °c Max Wind: From SE at 3 m/s</i> | <i>Dry day Max 26 °c Min 17 °c Max Wind: From SE at 3 m/s</i> | <i>Dry day Max 26 °c Min 18 °c Max Wind: From SE at 3 m/s</i> | 90.0 – 100.0 mm |
| | Kiteta /Kisau | <i>Mod. rains Max 24 °c Min 18 °c Max Wind: From SE at 4 m/s</i> | <i>Heavy rains Max 24 °c Min 17 °c Max Wind: From SE at 3 m/s</i> | <i>Light rains Max 25 °c Min 17 °c Max Wind: From SE at 4 m/s</i> | <i>Mod. rains Max 24 °c Min 17 °c Max Wind: From SE at 4 m/s</i> | <i>Dry day Max 25 °c Min 17 °c Max Wind: From SE at 3 m/s</i> | <i>Dry day Max 25 °c Min 17 °c Max Wind: From SE at 4 m/s</i> | <i>Dry day Max 26 °c Min 18 °c Max Wind: From SE at 3 m/s</i> | 100.0 – 110.0 mm |

| | | | | | | | | | |
|--------------|--------------------------|--|--|--|--|--|--|--|---------------------|
| | Kithungo /Kitundu | <i>Heavy rains</i> Max 23 °c Min 17 °c Max Wind: From SE at 4 m/s | <i>Mod. rains</i> Max 23 °c Min 17 °c Max Wind: From SE at 3 m/s | <i>Light rains</i> Max 24 °c Min 17 °c Max Wind: From SE at 4 m/s | <i>Mod. rains</i> Max 24 °c Min 17 °c Max Wind: From SE at 4 m/s | <i>Light rains</i> Max 24 °c Min 16 °c Max Wind: From SE at 3 m/s | <i>Dry day</i> Max 24 °c Min 16 °c Max Wind: From SE at 3 m/s | <i>Dry day</i> Max 26 °c Min 17 °c Max Wind: From SE at 3 m/s | 130.0 – 140.0 mm |
| | Kalawa | <i>Heavy rains</i> Max 26 °c Min 20 °c Max Wind: From SE at 4 m/s | <i>Mod. rains</i> Max 25 °c Min 19 °c Max Wind: From SE at 3 m/s | <i>Mod. rains</i> Max 25 °c Min 19 °c Max Wind: From SE at 3 m/s | <i>Mod. rains</i> Max 27 °c Min 19 °c Max Wind: From SE at 5 m/s | <i>Dry day</i> Max 27 °c Min 19 °c Max Wind: From SE at 4 m/s | <i>Dry day</i> Max 28 °c Min 19 °c Max Wind: From SE at 3 m/s | <i>Dry day</i> Max 28 °c Min 19 °c Max Wind: From SE at 3 m/s | 100.0 – 110.0 mm |
| | Mbooni | <i>Heavy rains</i> Max 21 °c Min 15 °c Max Wind: From SE at 4 m/s | <i>Mod. rains</i> Max 20 °c Min 15 °c Max Wind: From SE at 3 m/s | <i>Light rains</i> Max 21 °c Min 15 °c Max Wind: From SE at 4 m/s | <i>Light rains</i> Max 21 °c Min 15 °c Max Wind: From SE at 4 m/s | <i>Dry day</i> Max 22 °c Min 14 °c Max Wind: From SE at 3 m/s | <i>Dry day</i> Max 22 °c Min 14 °c Max Wind: From SE at 3 m/s | <i>Dry day</i> Max 22 °c Min 15 °c Max Wind: From SE at 3 m/s | 130.0 – 140.0 mm |
| | Kako/Waia | <i>Mod. rains</i> Max 25 °c Min 18 °c Max Wind: From SE at 4 m/s | <i>Heavy rains</i> Max 25 °c Min 17 °c Max Wind: From SE at 3 m/s | <i>Light rains</i> Max 26 °c Min 17 °c Max Wind: From SE at 5 m/s | <i>Mod. rains</i> Max 25 °c Min 17 °c Max Wind: From SE at 4 m/s | <i>Dry day</i> Max 26 °c Min 17 °c Max Wind: From SE at 3 m/s | <i>Dry day</i> Max 26 °c Min 18 °c Max Wind: From SE at 4 m/s | <i>Dry day</i> Max 26 °c Min 18 °c Max Wind: From SE at 3 m/s | 120.0 – 130.0 mm |
| KAITI | Kilungu | <i>Heavy rains</i> Max 20 °c Min 14 °c Max Wind: From SE at 5 m/s | <i>Mod. rains</i> Max 19 °c Min 14 °c Max Wind: From SE at 3 m/s | <i>Mod. rains</i> Max 20 °c Min 13 °c Max Wind: From SE at 5 m/s | <i>Mod. rains</i> Max 20 °c Min 14 °c Max Wind: From SE at 4 m/s | <i>Light rains</i> Max 20 °c Min 13 °c Max Wind: From SE at 3 m/s | <i>Dry day</i> Max 21 °c Min 13 °c Max Wind: From SE at 3 m/s | <i>Dry day</i> Max 21 °c Min 14 °c Max Wind: From SE at 3 m/s | 130.0 – 140.0 mm |
| | Ukia | <i>Heavy rains</i> Max 24 °c Min 18 °c Max Wind: From SE at 4 m/s | <i>Mod. rains</i> Max 23 °c Min 18 °c Max Wind: From SE at 3 m/s | <i>Light rains</i> Max 25 °c Min 18 °c Max Wind: From SE at 4 m/s | <i>Mod. rains</i> Max 24 °c Min 18 °c Max Wind: From SE at 4 m/s | <i>Light rains</i> Max 24 °c Min 17 °c Max Wind: From SE at 3 m/s | <i>Dry day</i> Max 25 °c Min 17 °c Max Wind: From SE at 3 m/s | <i>Dry day</i> Max 25 °c Min 18 °c Max Wind: From SE at 3 m/s | 100.0 – 120.0 mm |
| | Ilima | <i>Heavy rains</i> | <i>Mod. rains</i> | <i>Mod. rains</i> | <i>Mod. rains</i> | <i>Light rains</i> | <i>Dry day</i> | <i>Dry day</i> | 130.0 – 140.0 |

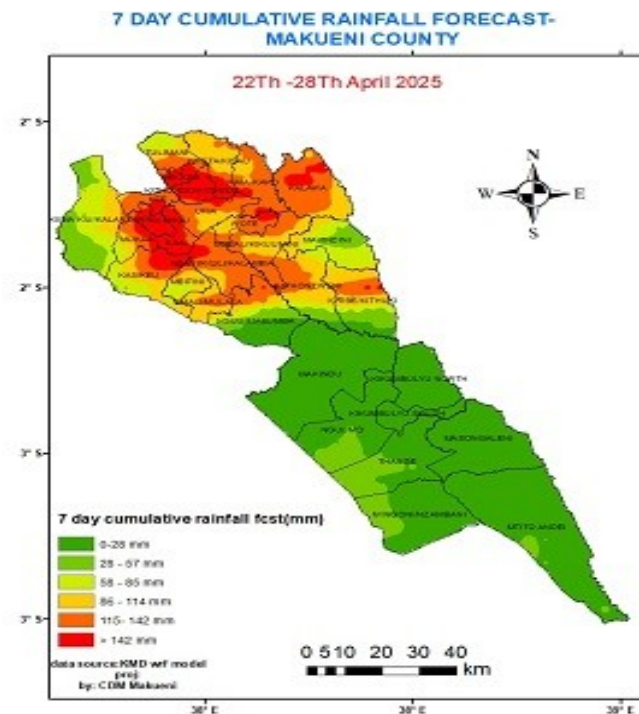
| | | | | | | | | | |
|--|------------|---|--|--|--|---|---|---|---------------------|
| | | <i>Max 23 °c</i> <i>Min 17 °c</i> <i>Max Wind:</i> <i>From SE at 5</i> <i>m/s</i> | <i>Max 23 °c</i> <i>Min 17 °c</i> <i>Max Wind:</i> <i>From SE at 3</i> <i>m/s</i> | <i>Max 24 °c</i> <i>Min 17 °c</i> <i>Max Wind:</i> <i>From SE at 5</i> <i>m/s</i> | <i>Max 23 °c</i> <i>Min 17 °c</i> <i>Max Wind:</i> <i>From SE at 4</i> <i>m/s</i> | <i>Max 24 °c</i> <i>Min 17 °c</i> <i>Max Wind:</i> <i>From SE at 3</i> <i>m/s</i> | <i>Max 25 °c</i> <i>Min 17 °c</i> <i>Max Wind:</i> <i>From SE at 3</i> <i>m/s</i> | <i>Max 25 °c</i> <i>Min 17 °c</i> <i>Max Wind:</i> <i>From SE at 3</i> <i>m/s</i> | mm |
| | Kee | <i>Heavy rains</i> <i>Max 22 °c</i> <i>Min 16 °c</i> <i>Max Wind:</i> <i>From SE at 5</i> <i>m/s</i> | <i>Mod. rains</i> <i>Max 23 °c</i> <i>Min 17 °c</i> <i>Max Wind:</i> <i>From SE at 4</i> <i>m/s</i> | <i>Mod. rains</i> <i>Max 23 °c</i> <i>Min 16 °c</i> <i>Max Wind:</i> <i>From SE at 5</i> <i>m/s</i> | <i>Mod. rains</i> <i>Max 23 °c</i> <i>Min 16 °c</i> <i>Max Wind:</i> <i>From SE at 4</i> <i>m/s</i> | <i>Dry day</i> <i>Max 24 °c</i> <i>Min 15 °c</i> <i>Max Wind:</i> <i>From SE at 3</i> <i>m/s</i> | <i>Dry day</i> <i>Max 24 °c</i> <i>Min 15 °c</i> <i>Max Wind:</i> <i>From SE at 3</i> <i>m/s</i> | <i>Dry day</i> <i>Max 24 °c</i> <i>Min 16 °c</i> <i>Max Wind:</i> <i>From SE at 3</i> <i>m/s</i> | 130.0 – 140.0 mm |

2. NATIONAL WEEKLY FORECAST MAP



- The National Forecast map above for the next seven days is critical at this particular time for early warning information because it shows heavy rainfall events in our upstream counties likely to adversely impact us in Makueni County.
- We therefore are going into a week where we are likely to experience riverine flooding, mudslide incidences, localized flooding and fully recharged water sources like earth dams and water pans.
- We therefore are advising our people to be cautious of the above named anticipated hydro-meteorological conditions that are likely to adversely impact our populace in various wards.
- The good news is that within the upcoming week we are anticipating a pickup of rainfall activities after a long dry spell that had started scaring especially our farmers.

3. MAKUENI COUNTY WEEKLY FORECAST MAP



Key Scientific Terms used in the Forecast.

| | |
|------------------------|------------|
| < 5 mm of rainfall | Light |
| 5 – 20 mm of rainfall | Moderate |
| 20 – 50 mm of rainfall | Heavy |
| > 50 mm of rainfall | Very heavy |

- 1 mm of rainfall is equivalent to 1 liter of water per square meter.

Comparing cumulative rainfall totals for the last two weeks.

| <i>Station Name</i> | 8th – 14th April 2025 | 15th – 21st April 2025 |
|-------------------------|--|---|
| <i>Nguu/Masumba</i> | 10.2 mm | 39.7 mm |
| <i>Wote/Nziu</i> | 4.8 mm | 59.1 mm |
| <i>Kasikeu</i> | 40.5 mm | 116.9 mm |
| <i>Masongaleni</i> | 0.0 mm | 7.3 mm |
| <i>Kako/Waia</i> | 2.4 mm | |
| <i>Kalawa</i> | 0.0 mm | 35.5 mm |
| <i>Mbooni</i> | 26.6 mm | 55.8 mm |
| <i>Mtito Andei</i> | | |
| <i>Mukaa/Kitaingo</i> | 27.8 mm | 102.8 mm |
| <i>Kikumbulyu South</i> | 2.5 mm | 17.2 mm |
| <i>Mavindini</i> | 0.0 mm | 94.2 mm |
| <i>Makindu Met.Stn.</i> | 4.6 mm | 20.3 mm |
| <i>Emali/Mulala</i> | | |

NB: Blank spaces imply missing data.

➤ **TR.** implies “Trace” which means minimal rainfall amounts of less than 0.05 mm.

1. PART II: Further Advisories.

(i). Community members advised to inculcate the culture of being “weather – ready”, “climate smart” and “water – wise” as we navigate the unfamiliar and chaotic environment of a changing climate. This will help them adapt to a changing climate while at the same time mitigating the adverse effects of climate change.

(ii). Farmers advised to consult the nearest Ward Agricultural Officer (WAO) and the Ward Livestock Production Officer (WLPO) to get any further agro-weather, agronomy and livestock production advisories they may require from time to time as the Short Rains 2024 season ceases and we enter into the hot dry season with occasional light rains.

(iii). Farmers advised to take advantage of the seasonal rains to harvest as much water as possible either roof catchment or surface runoff.

(iv). Members of the community advised to take advantage of the seasonal rains and grow trees at individual level in their lands to increase tree cover and help in mitigating the adverse impacts of climate change.

NB: This forecast should be used in conjunction with the 24-hour, 5-day, 7-day, monthly outlooks, special forecasts, alerts and regular updates/advisories issued by this department.