



REPUBLIC OF KENYA
MINISTRY OF ENVIRONMENT, CLIMATE CHANGE and FORESTRY
METEOROLOGICAL DEPARTMENT COUNTY METEOROLOGICAL SERVICE
P. O. Box 493 Meru, Kenya.
Phone : 0729287479
E-mail: nthuni@gmail.com

CLIMATE OUTLOOK FOR APRIL AND REVIEW OF MARCH 2025

1 HIGHLIGHTS

1.1 The forecast for April 2025

April is the peak month of the "Long Rains" season. The outlook for the month indicates that near-to-above-average rainfall is expected across most parts of the county. The higher ground and some parts of middle zones are likely to receive enhanced rainfall while the lower zones are expected to experience near-average rainfall. Isolated episodes of heavy rainfall are likely to occur in various parts of the county during the month. Warmer-than-average temperatures are also anticipated over the whole county.

2 CLIMATE OUTLOOK FOR APRIL 2025

2.1 The Rainfall Forecast for April 2025

The April 2025 rainfall forecast is derived from regression analysis of Sea Surface Temperature Anomalies (SSTAs) and Sea Surface Temperature (SST) gradient.

The outlook for the month indicates that the all wards of Meru are expected to receive near-to-above-average rainfall.

Specific Outlook for individual areas

Higher Zone

2.1 These areas includes the following wards (*Municipality, Ntima East, Ntima West Abogeta East, Abogeta West, Igoji West, Igoji East, Nkuene, , Kianjai, Kiguchwa, Mikinduri, Thangatha Abothuguchi Central, Abothuguchi West, Nyaki East, Nyaki West, Kegoi Antobuchiu*)

The total amounts of rainfall expected in April are likely to be near to above the long-term average for the month. Occasional storms are also likely

Middle Zone

2.2 These areas includes the following wards (Kiagu, Mwanganthia, Mitunguu, Kiirua Naari, Timau, Kisima, Kibirichia, Ruri Rwarera, Ntuene, Antubetwe Kiongo)

The total amounts of rainfall expected in April are likely to be near to above the long-term average for the month. Occasional storms are also likely

Lower Zone

2.3 These are areas of (Nkomo, Mbeu, Akiithi, Athwana, Muthara, Special, Karama, Kangeta, Njia, Igembe East, Akirang'ondu, Athiru Ruujine, Akachiu, Kanuni, , Maua, Athiru Gaiti, Amwathi, Naathu, , Antuambui,)

The total amounts of rainfall expected in April are likely to be near to above the long-term average for the month. Occasional storms are also likely

3.0 Potential impacts

The following are the likely impacts during the month of April 2025 based on the rainfall forecast.

3.1.1 Agriculture and Food Security

The near to above average rainfall expected over the high agricultural potential areas are conducive for agriculture. Farmers are encouraged to continue liaising with the relevant agricultural authorities for best practices.

Pasture may rejuvenate over the ASAL areas bouldering Isiolo owing to the rainfall received towards the end of March and the occasional rainfall expected in April.

There may be isolated cases of land degradation and soil erosion in areas that are expected to receive near to above average rainfall.

3.1.2 Disaster Management

There is a possibility of isolated storms occurring, which could result in flash and riverine floods in poorly drained urban centers, and the low-lying areas of Maua. The public are advised not to walk, drive, or cycle in moving waters to avoid risks that could lead to loss of life.

There may be cases of landslides in the high-risk areas over the Higher zones.

There is also the possibility of lightning strikes over various parts of County. The public are cautioned against seeking shelter from the rain under trees or near metallic structures.

3.1.3 Water Resources Management and Energy

The near-to-above-average rainfall is expected to enhance water availability for both domestic and livestock use. To meet their water requirements, the public are encouraged to adopt rainwater harvesting and storage practices.

3.1.4 Environment

The increased rainfall is expected to provide ample soil moisture, creating favorable conditions for tree growth. The public are encouraged to plant trees to help expand the forest cover across the country, supporting Kenya's national "15 Billion Trees Campaign (Jaza Miti)" initiative which aims to plant 15 billion trees by 2032 in order to restore degraded landscapes, increase forest cover to 30%, and combat climate change. However, it is important to note that excessive rainfall may lead to environmental degradation, particularly through soil erosion. In this regard, it is advisable to adopt proper agricultural practices, such as implementing soil conservation measures, to help protect and preserve the environment while participating in this critical national effort.

3.1.5 Health

There may be an increase in water and vector-borne diseases in areas that are expected to receive near to above average rainfall as stagnant water coupled with warmer than average temperatures are likely to provide breeding grounds for mosquitoes and other pathogens. The public are encouraged to use insect-treated nets and embrace Water and Sanitation Hygiene (WASH) practices to minimize their exposure to diseases.

3.1.6 Transport and Public Safety

The rainfall expected during the month may lead to slippery roads and poor visibility, especially on days with heavy rainfall. Motorists are therefore advised to be careful on the roads to minimize accidents.

REVIEW OF THE CLIMATE DURING MARCH 2025

2.2 Climate Review for March 2025

The onset of the March-April-May (MAM) "Long Rains" season in the county occurred during the third week most places. Near-to-above-average rainfall was recorded over most parts, except Meru met station and Kisma area, where below-average rainfall was reported. See figure 1

Maximum temperatures were warmer than average over several parts. Minimum temperatures were warmer than average over the whole county.

2.3 Review of the Rainfall Performance in March 2025

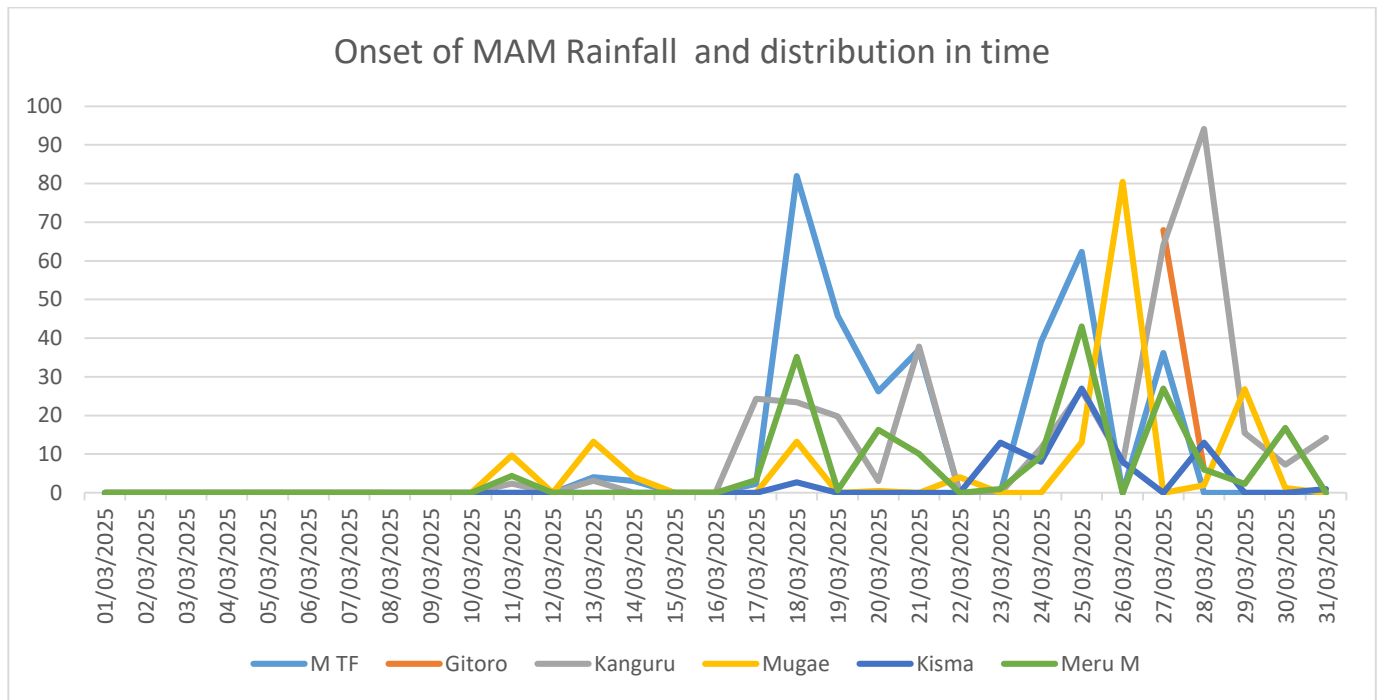


Figure 1, Meru Rainfall during the Month of March 2025

Rainfall was recorded over most parts of the county during the month of March, with the areas around Ruiru receiving rainfall from the second week. Other parts of the county received rainfall during the third week of March. The rainfall was near to above the March Long Term Mean (LTM) except over Meru and Kisma stations where below average rainfall was recorded. Analysis up to 31st March showed Kaguru ATC station recorded the highest rainfall amount (354.8 mm), followed by Michimikuru Tea Factory 337.9 mm: Meru met 175.4 mm , Mugae 168.2 and Kisima 72.7mm.

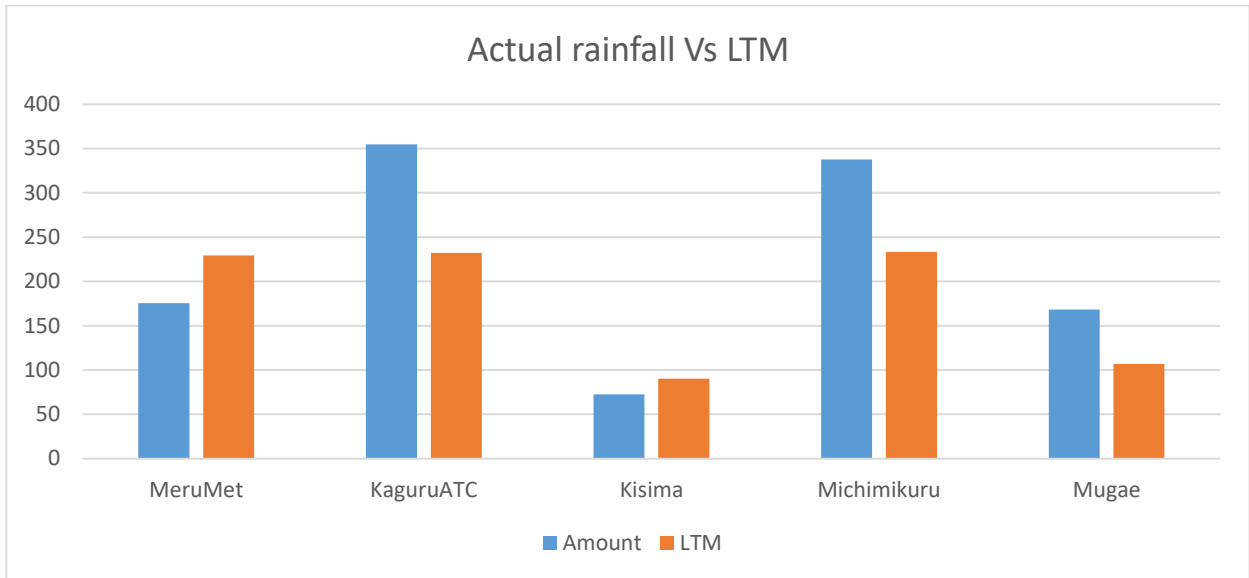
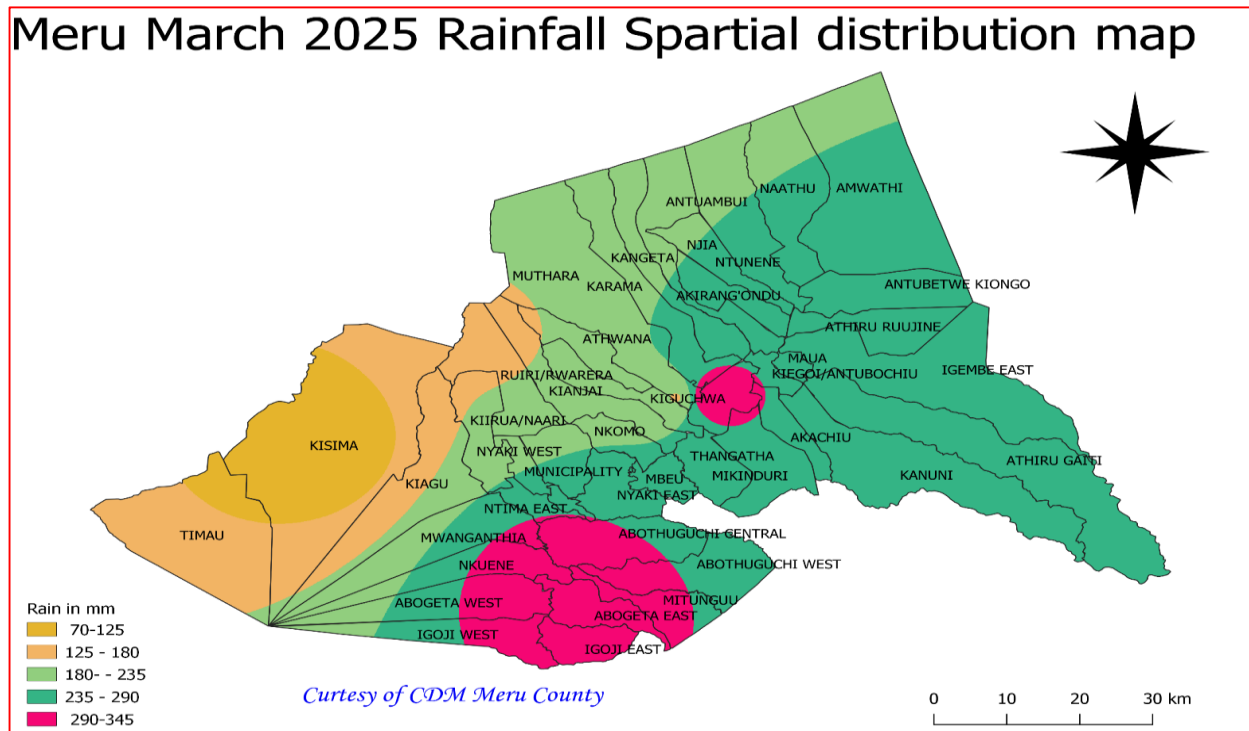


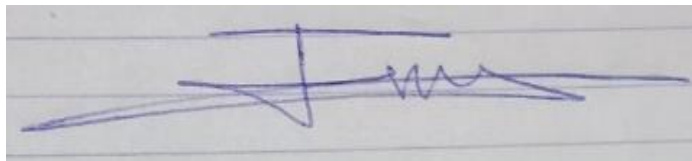
Figure 2, Meru Actual rainfall Vs the LTM rainfall for March 2025

Spatial distribution of Rainfall during the month of March 2025

The Rainfall distribution over space was not fair during the month of March where some parts received much rainfall where others received little amount as shown in figure 3 below



N.B: This forecast should be used in conjunction with the daily (24-hour) and five-day forecasts issued by this Department.

A handwritten signature in blue ink on lined paper. The signature is stylized and appears to be 'Justin Murithi'. It consists of a horizontal line at the top, a vertical line intersecting it, and several horizontal strokes below, some of which are wavy.

Justin Murithi

County Director Meteorological Services Meru