



KENYA
METEOROLOGICAL
DEPARTMENT

For further info:

Contact: Daniel M. Mbithi

Mobile No. 0715255171

Email: mbithi_d@yahoo.com

County Director of Meteorological Services Kitui County

Weekly Weather forecast for Kitui County

1.1 PART I: WEEKLY FORECAST FOR THE PERIOD 13th to 19th May 2025 Weather forecast Table

Sub County	Ward	Probable Total weekly amount (mm)	Probable weather Notes: Light rains <1-5 mm; Moderate rains 5-20 mm; Heavy rains 20-50 mm; Very heavy rains >50 mm							Winds (km/h kilometers per hour)	Temp (Tmax °C & Tmin °C)
			Tue	Wed	Thur	Fri	Sat	Sun	Mon	Weekly	Weekly
Mwingi West	Nguutani	<10mm	Light rain	Light rain	No rain	No rain	No rain	No rain	No rain	Easterly 18.0 km/h	Max 26-29 °C Min 17-19 °C
	Kyome/Thaana	<10mm	Light rain	Light rain	No rain	No rain	No rain	No rain	No rain		
	Kiomo/Kyethani	<10mm	Light rain	Light rain	No rain	No rain	No rain	No rain	No rain		
	Migwani	<10mm	Light rain	Light rain	No rain	No rain	No rain	No rain	No rain		
Mwingi North	Ngomeni	<10mm	Light rain	Light rain	No rain	No rain	No rain	No rain	No rain	Easterly 21.6 km/h	Max 29-33 °C Min 19-22 °C
	Kyuso	<10mm	Light rain	Light rain	No rain	No rain	No rain	No rain	No rain		
	Tseikuru	<10mm	Light rain	Light rain	No rain	No rain	No rain	No rain	No rain		
	Tharaka	<10mm	Light rain	Light rain	No rain	No rain	No rain	No rain	No rain		
	Mumoni	<10mm	Light rain	Light rain	No rain	No rain	No rain	No rain	No rain		
Mwingi Central	Central	<10mm	Light rain	Light rain	No rain	No rain	No rain	No rain	No rain		
	Kivou	<10mm	Light rain	Light rain	No rain	No rain	No rain	No rain	No rain		

Sub County	Ward	Probable Total weekly amount (mm)	Probable weather Notes: Light rains <1-5 mm; Moderate rains 5-20 mm; Heavy rains 20-50 mm; Very heavy rains >50 mm							Winds (km/h kilometers per hour)	Temp (Tmax °C & Tmin °C)
			Tue	Wed	Thur	Fri	Sat	Sun	Mon	Weekly	Weekly
Central	Kyangwithya West	<10mm	Light rain	Light rain	No rain	No rain	No rain	No rain	No rain	Easterly 18.0 km/h	Max 24-29 °C Min 17-21 °C
	Township	<10mm	Light rain	Light rain	No rain	No rain	No rain	No rain	No rain		
	Mulango	<10mm	Light rain	Light rain	No rain	No rain	No rain	No rain	No rain		
	Miambani	<10mm	Light rain	Light rain	No rain	No rain	No rain	No rain	No rain		

1.2 Review for April 2025

The onset of the March-April-May (MAM) "Long Rains" season in the County occurred during the second and third week over few places and the rest during the fourth week of March. Near-to-above-average rainfall was recorded over several parts of the County. Maximum and minimum temperatures were generally warmer than average over several part of the County. Though April marks the peak of the Long Rains (March–April–May) season over most parts of the county, higher amounts of rainfall were realized during March.

1.3 Outlook for May 2025

The May 2025 rainfall forecast is derived from regression analysis of Sea Surface Temperature Anomalies (SSTAs) and Sea Surface Temperature (SST) gradient. Currently, the Indian Ocean Dipole (IOD) is neutral and weak La Niña conditions are still present. The forecast indicates that most parts of the County will experience near to above normal rainfall during the month. The month is also likely to be characterized by isolated severe storms over several parts of the county. Temperatures are also likely to be above average over the entire County.

1.4 PART II: FURTHER ADVISORIES

SUMMARY ABOUT THE WEEKLY FORECAST:

Morning light rains as well as afternoon and night showers and thunderstorms are expected over few places during early days of the forecast period. Maximum temperatures are expected to range from 23°C - 33°C, while minimum temperatures are expected to range from 15°C - 22°C. Strong North easterly to Easterly winds with speeds exceeding 12.5 knots (6.5 m/s) are expected in most parts of the County. *Community members advised to inculcate the culture of being “weather – ready”, “climate – smart” and “water – wise” as we navigate the unfamiliar and chaotic environment of a changing climate. This will help them adapt to a changing climate while at the same time mitigating the adverse effects of Climate Change and Variability, hence becoming more resilient to the vagaries of Climate Change.* In light of this weather forecast, farmers are also advised to consult with respective local extension officers from the County Ministry of Agriculture and Livestock at ward level for more advice on the best farm practices.

Note: 1 mm of rainfall is equivalent to 1 litre of rainfall per square meter.

KEY OF SCIENTIFIC WORDS USED

Rainfall categories	
Range	Category
<5 mm	Light
5 - 20mm	Moderate
20 - 50mm	Heavy
>50mm	Very heavy
Rainfall coverage	
Term	Meaning
Most Places	Between 66% and 100%
Several Places	Between 33% and 66%
Few Places	Below 33%
Ushauri wa Idara ya Utabiri wa Hali ya Hewa: Mvua za Masika zinakaribia kuisha katika Kaunti ya Kitui. Wakulima wanashauriwa waandelelee kutunza mimea yao hili wadudu na magonjwa yasije yakaenea kwa wingi na kuaribu hio mimea.	

For further information, please contact:



Daniel M. Mbithi

County Director of Meteorological Services

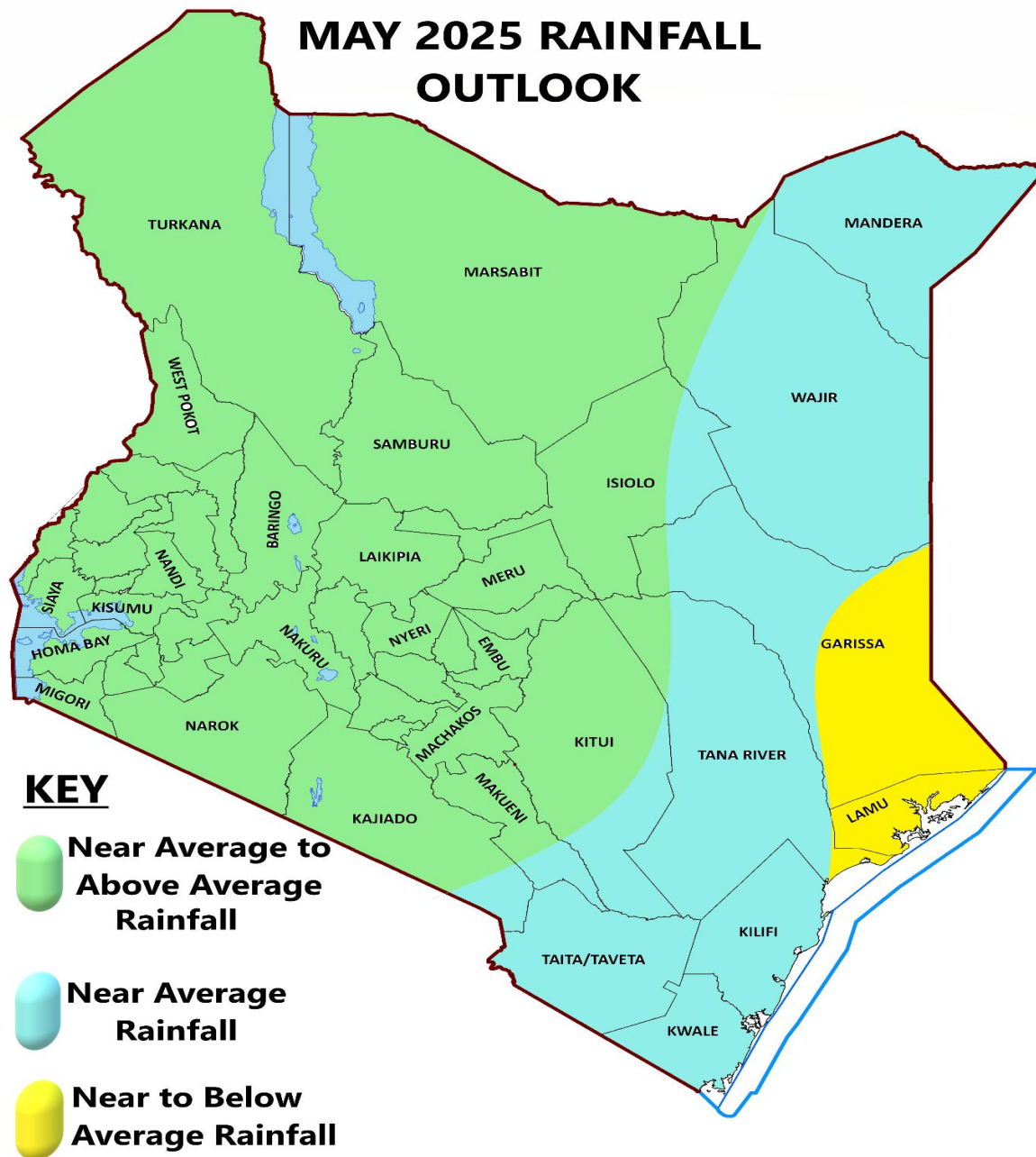
Mobile: 0715255171

Email: mbithi_d@yahoo.com

You can find more information about the climate and weather in Kenya on the KMD website <http://www.meteo.go.ke/>

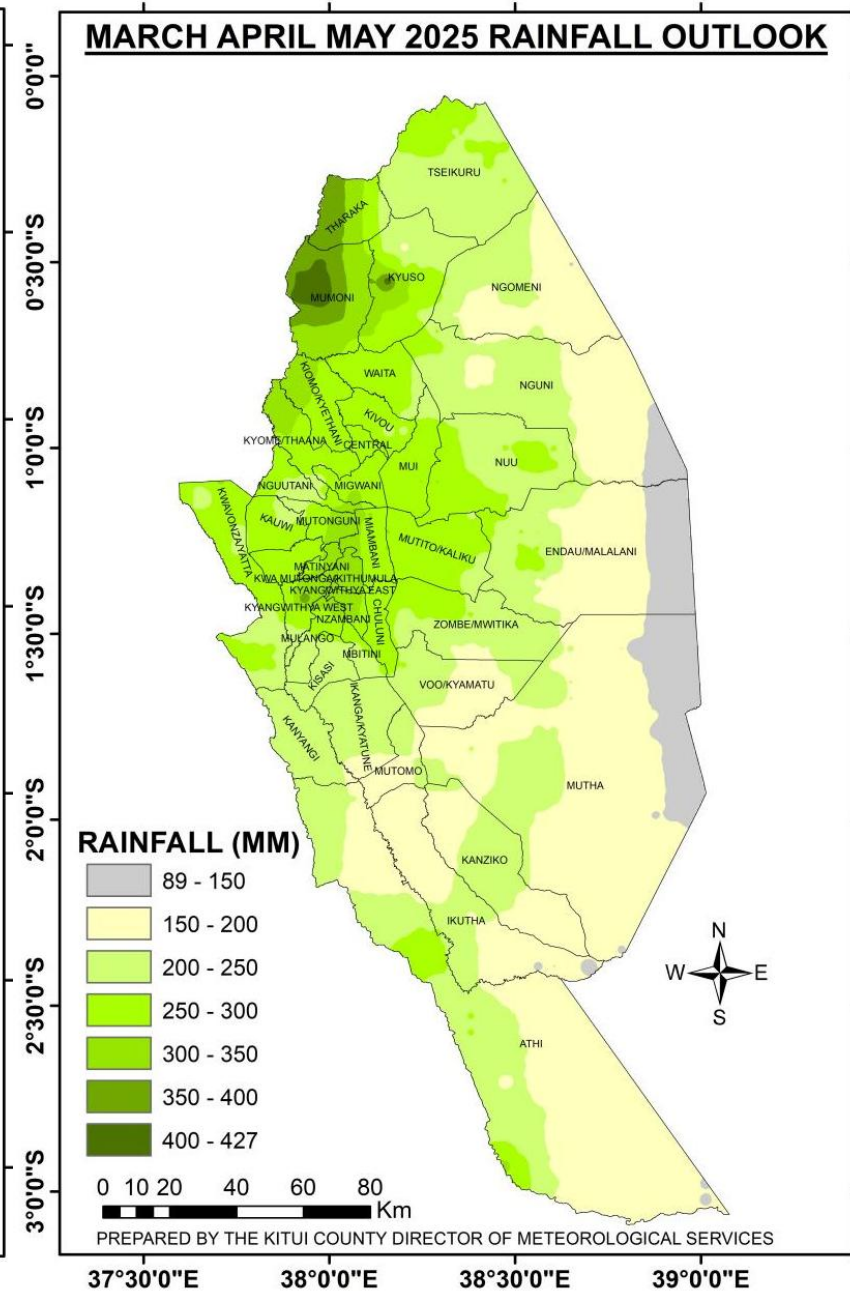
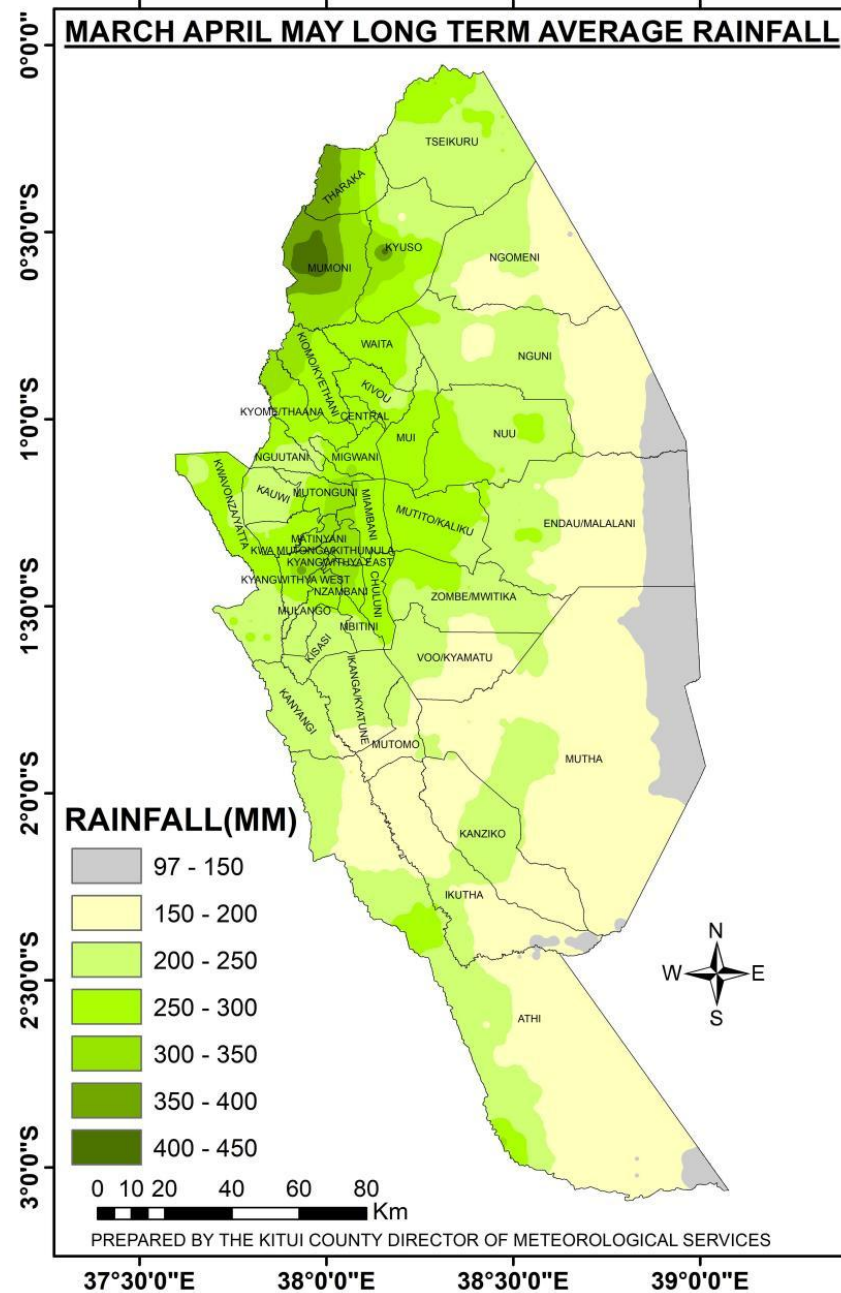
Annex I: Rainfall forecast for the month of May 2025

MAY 2025 RAINFALL OUTLOOK



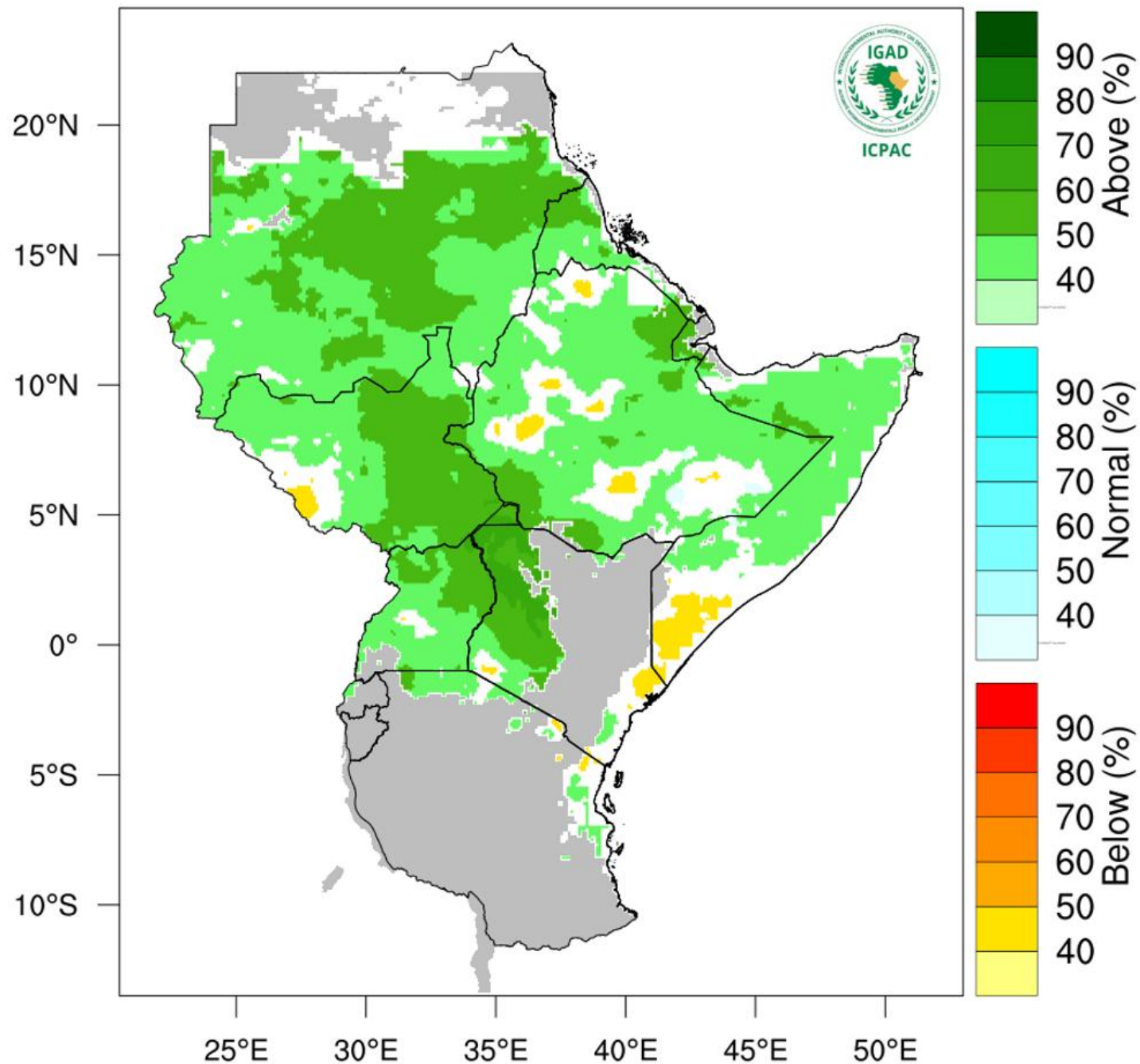
NB: Near to above normal rainfall expected over most places during the month of May 2025 in the County

Annex II: Rainfall Climatology versus Rainfall Forecast for the months of March to May (MAM) 2025



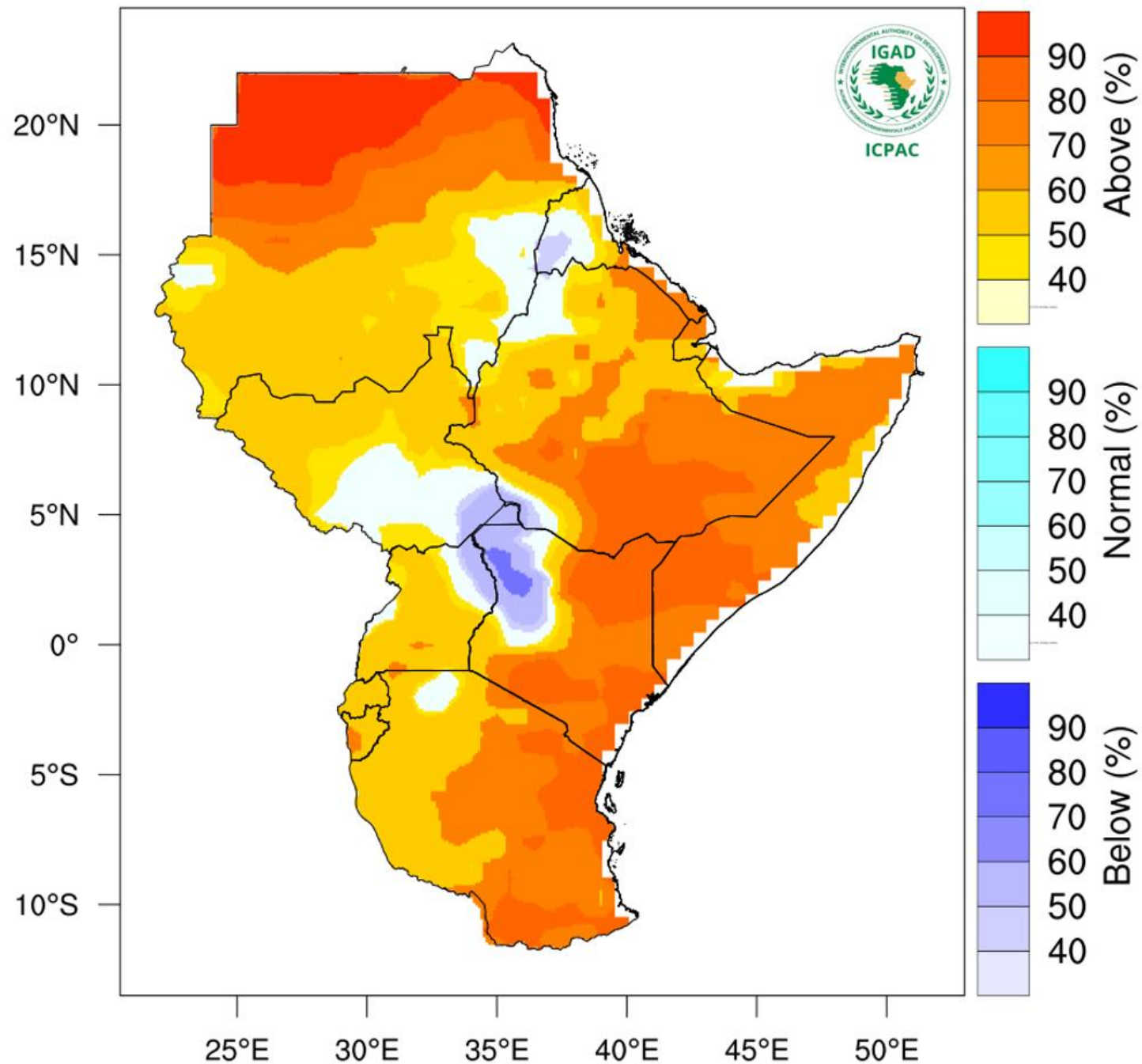
NB: The expected rainfall amounts in the county are likely to be normal to below the long-term average for the season. Onset is expected during the 4th week of March to 1st week of April. Cessation is expected during the third to fourth week of May.

Rainfall Probabilistic Forecast for May – Jul 2025



NB: Near to below normal conditions expected over most parts of the County between May to July 2025

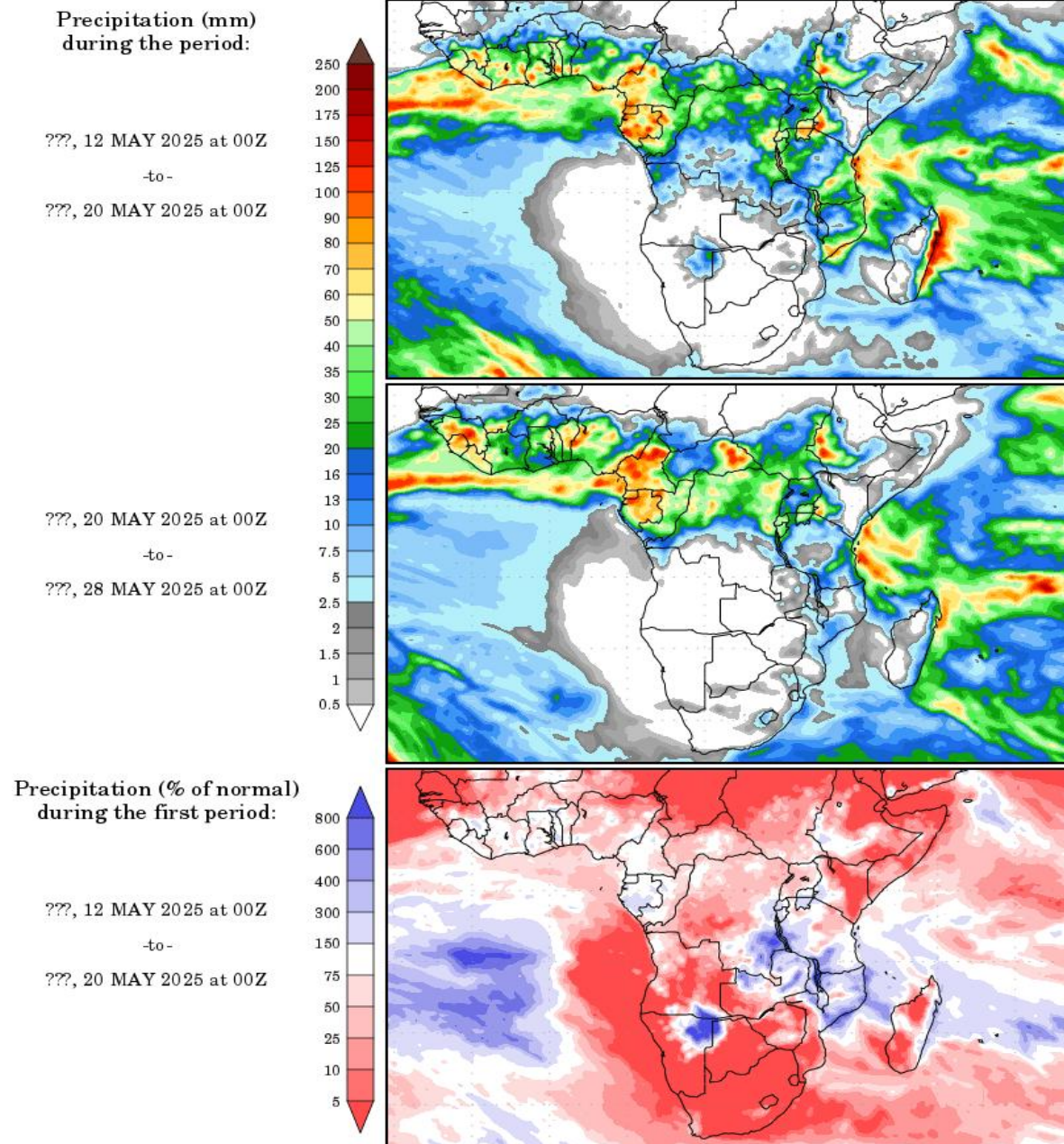
Temperature Probabilistic Forecast for May - Jul 2025



NB: Warmer than usual conditions indicated over most parts of Kitui County between May and July 2025

Annex V: Rainfall forecast for 12th to 28th May, 2025

Precipitation Forecasts



Precipitation forecasts from the National Centers for Environmental Prediction.
Normal rainfall derived from Xie-Arkin (CMAF) Monthly Climatology for 1979-2003.
Forecast Initialization Time: 00Z12MAY2025

NB: Near to above normal conditions expected over most parts of the County between 12th to 28th May, 2025