



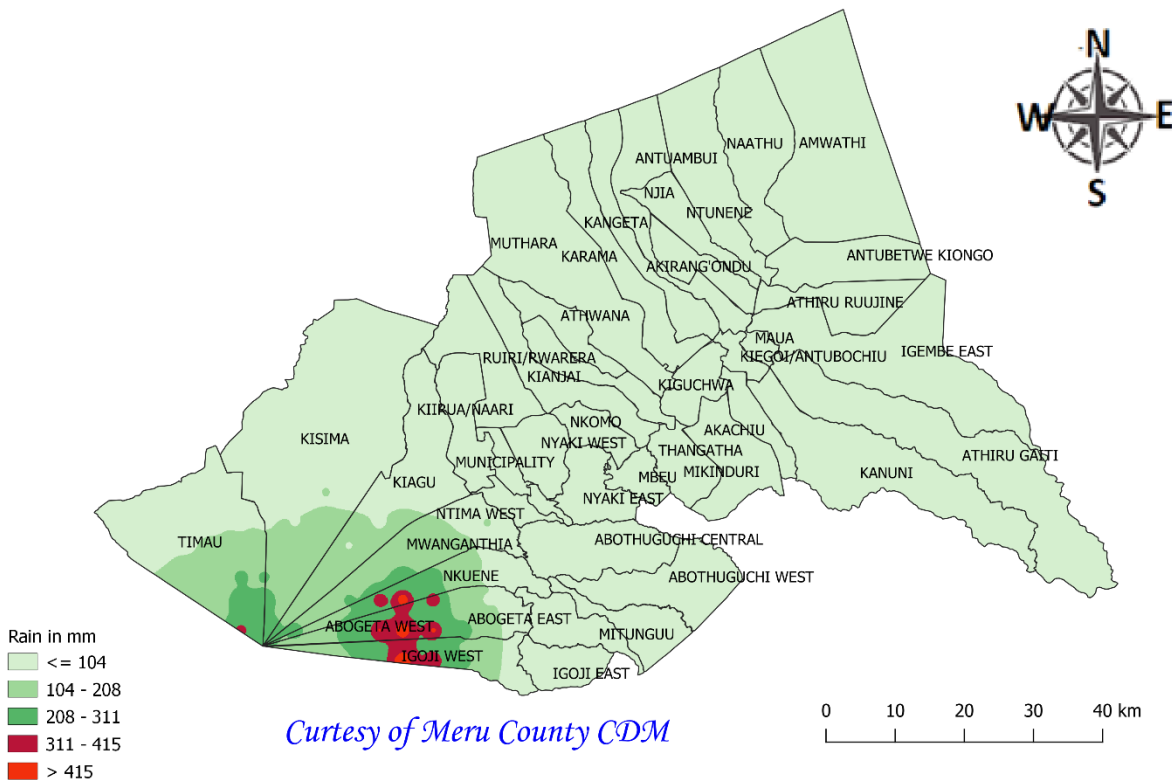
REPUBLIC OF KENYA  
MINISTRY OF ENVIRONMENT, CLIMATE CHANGE and FORESTRY  
METEOROLOGICAL DEPARTMENT COUNTY METEOROLOGICAL SERVICE  
P. O. Box 493 Meru, Kenya.  
Phone : 0729287479  
E-mail: [nthuni@gmail.com](mailto:nthuni@gmail.com)

**FORECAST FOR THE NEXT SEVEN-DAY PERIOD VALID 6<sup>th</sup> to 12<sup>th</sup> May 2025**

**Issued on 5<sup>th</sup> May 2025**

**Rainfall expected over most places**

## Meru weather outlook valid 6-12 May 2025



**Forecast Summary , Most parts expected to receive rainfall below 100mm while few parts of Abogeta and Igoji are expected to record rainfall exceeding 300mm.**

## **Forecast in Detail**

### **Higher Zone**

These areas includes the following wards (*Municipality, Ntima East, Ntima West Abogeta East, Abogeta West, Igoji West, Igoji East, Nkuene, , Kianjai, Kiguchwa, Mikinduri, Thangatha Abothuguchi Central, Abothuguchi West, Nyaki East, Nyaki West, Kegoi Antobuchiu*)

- *Few area ( Igoji,Abogeta and Nkuene) in these Region are expected to record rainfall heavy rainfall more than 30mm per day . While other areas in this region are expected to record Moderate rainfall (10mm per day). Temperatures expected to be high this week, range between 24 to 15 degrees' census*
- *Light southwesterly to southeasterly wind expected*

### **Middle Zone**

These areas includes the following wards (*Kiagu, Mwanganthia, Mitunguu, Kiirua Naari, Timau, Kisima, Kibirichia, Ruri Rwarera, Ntuene, Antubetwe Kiongo*)

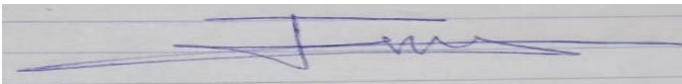
- **These areas expect Moderate rains throughout the week .**
- **Temperature expected to raise ranging between 23 to 16 degree census**
- **Moderate south easterly winds expected**

### **Lower Zone**

These are areas of (*Nkomo, Mbeu, Akiithi, Athwana, Muthara, Special, Karama, Kangeta, Njia, Igembe East, Akirang'ondy, Athiru Ruujine,Akachiu, Kanuni, , Maua, Athiru Gaiti,Amwathi, Naathu, , Antuambui,*)

- **Moderate rains expected in these areas .However few areas are expected to remain dry toward the end of week.**
- **Temperatures expected to range between 29 max to 19 min degrees census**
- **Moderate southerly winds expected**

***N.B: This forecast should be used in conjunction with the daily (24-hour) and five-day forecasts issued by this Department.***



**Justin Murithi, County Director Meteorological Services Meru**