



For further info:
Contact: Daniel M. Mbithi
Mobile No. 0715255171
Email: mbithi_d@yahoo.com
 County Director of Meteorological Services Tharaka Nithi County

Weekly Weather forecast for Tharaka Nithi County

1.1 PART I: WEEKLY FORECAST FOR THE PERIOD 6th to 12th May 2025 WEATHER FORECAST TABLE

| Sub County | Ward | Probable Total weekly amount (mm) | Probable weather | | | | | | | Winds (km/h kilometers per hour) | Temp (Tmax °C & Tmin °C) |
|------------|-------------|-----------------------------------|---|---------------|---------------|---------------|---------------|---------------|------------|----------------------------------|------------------------------|
| | | | Notes: Light rains <1-5 mm; Moderate rains 5-20 mm; Heavy rains 20-50 mm; Very heavy rains >50 mm | | | | | | | | |
| | | | Tue | Wed | Thur | Fri | Sat | Sun | Mon | | |
| Tharaka | Gatunga | >20mm | Moderate rain | Light rain | Light rain | Moderate rain | Moderate rain | Moderate rain | Light rain | Easterly 14.4 km/h | Max 28-32 °C Min 19-22 °C |
| | Mukothima | >20mm | Moderate rain | Light rain | Moderate rain | Moderate rain | Moderate rain | Moderate rain | Light rain | | |
| | Nkondi | >20mm | Moderate rain | Moderate rain | Moderate rain | Moderate rain | Moderate rain | Moderate rain | Light rain | | |
| | Chiakaringa | >20mm | Moderate rain | Moderate rain | Moderate rain | Moderate rain | Moderate rain | Moderate rain | Light rain | | |
| | Marimanti | >20mm | Moderate rain | Moderate rain | Moderate rain | Moderate rain | Moderate rain | Moderate rain | Light rain | | |
| | Mariani | >20mm | Moderate rain | Moderate rain | Moderate rain | Moderate rain | Moderate rain | Moderate rain | Light rain | | |

| Sub County | Ward | Probable Total weekly amount (mm) | Probable weather Notes: Light rains <1-5 mm; Moderate rains 5-20 mm; Heavy rains 20-50 mm; Very heavy rains >50 mm | | | | | | | Winds (km/h kilometers per hour) | Temp (Tmax °C & Tmin °C) | |
|----------------------|---------------|-----------------------------------|---|---------------|---------------|---------------|---------------|---------------|---------------|----------------------------------|--------------------------|------------------------------|
| | | | Tue | Wed | Thur | Fri | Sat | Sun | Mon | Weekly | Weekly | |
| Chuka/Igam bang'ombe | Karingani | >20mm | Moderate rain | Moderate rain | Moderate rain | Moderate rain | Moderate rain | Moderate rain | Moderate rain | Light rain | Easterly 14.4 km/h | Max 25-30 °C Min 17-21 °C |
| | Magumoni | >20mm | Moderate rain | Moderate rain | Moderate rain | Moderate rain | Moderate rain | Moderate rain | Moderate rain | Light rain | | |
| | Mugwe | >20mm | Moderate rain | Moderate rain | Moderate rain | Moderate rain | Moderate rain | Moderate rain | Moderate rain | Light rain | | |
| | Igambang'ombe | >20mm | Moderate rain | Moderate rain | Moderate rain | Moderate rain | Moderate rain | Moderate rain | Moderate rain | Light rain | | |
| Maara | Mwimbi | >20mm | Moderate rain | Light rain | Moderate rain | Moderate rain | Moderate rain | Moderate rain | Moderate rain | Light rain | Easterly 18.0 km/h | Max 21-26 °C Min 13-18 °C |
| | Mitheru | >20mm | Moderate rain | Light rain | Moderate rain | Moderate rain | Moderate rain | Moderate rain | Moderate rain | Light rain | | |
| | Muthambi | >20mm | Moderate rain | Moderate rain | Moderate rain | Moderate rain | Moderate rain | Moderate rain | Moderate rain | Moderate rain | | |
| | Ganga | >20mm | Moderate rain | Moderate rain | Moderate rain | Moderate rain | Moderate rain | Moderate rain | Moderate rain | Moderate rain | | |
| | Chogoria | >20mm | Moderate rain | Moderate rain | Moderate rain | Moderate rain | Moderate rain | Moderate rain | Moderate rain | Moderate rain | | |

1.2 Review for April 2025

The onset of the March-April-May (MAM) "Long Rains" season in the County occurred during the second and third week over few places and the rest during the fourth week of March. Near-to-above-average rainfall was recorded over several parts of the County. Maximum and minimum temperatures were generally warmer than average over several part of the County. Though April marks the peak of the Long Rains (March–April–May) season over most parts of the county, higher amounts of rainfall were realized during March.

1.3 Outlook for May 2025

The May 2025 rainfall forecast is derived from regression analysis of Sea Surface Temperature Anomalies (SSTAs) and Sea Surface Temperature (SST) gradient. Currently, the Indian Ocean Dipole (IOD) is neutral and weak La Niña conditions are still present. The forecast indicates that most parts of the County will experience near to above normal rainfall during the month. The month is also likely to be characterized by isolated severe storms over several parts of the county. Temperatures are also likely to be above average over the entire County.

1.4 PART II: FURTHER ADVISORIES

SUMMARY ABOUT THE WEEKLY FORECAST:

Morning light rains as well as afternoon and night showers and thunderstorms are expected over several places increasing in intensity during the weekend. Maximum temperatures are expected to range from 21°C - 32°C, while minimum temperatures are expected to range from 13°C - 22°C. Strong North easterly to Easterly winds with speeds exceeding 12.5 knots (6.5 m/s) are expected in most parts of the County. *Community members advised to inculcate the culture of being “weather – ready”, “climate – smart” and “water – wise” as we navigate the unfamiliar and chaotic environment of a changing climate. This will help them adapt to a changing climate while at the same time mitigating the adverse effects of Climate Change and Variability, hence becoming more resilient to the vagaries of Climate Change.* In light of this weather forecast, farmers are also advised to consult with respective local extension officers from the County Ministry of Agriculture and Livestock at ward level for more advice on the best farm practices.

Note: 1 mm of rainfall is equivalent to 1 litre of rainfall per square meter.

KEY OF SCIENTIFIC WORDS USED

| Rainfall categories | |
|----------------------------|-----------------|
| Range | Category |
| <5 mm | Light |
| 5 - 20mm | Moderate |
| 20 - 50mm | Heavy |
| >50mm | Very heavy |

| Rainfall coverage | |
|--------------------------|----------------------|
| Term | Meaning |
| Most Places | Between 66% and 100% |
| Several Places | Between 33% and 66% |
| Few Places | Below 33% |

Ushauri wa Idara ya Utabiri wa Hali ya Hewa:
Mvua za Masika zinaendelea kunyesha katika Kaunti ya Tharaka Nithi, kwa hivyo wakulima wanashauriwa waandeleo kupalilia, kuweka mbolea na kupiga dawa mimea yao.

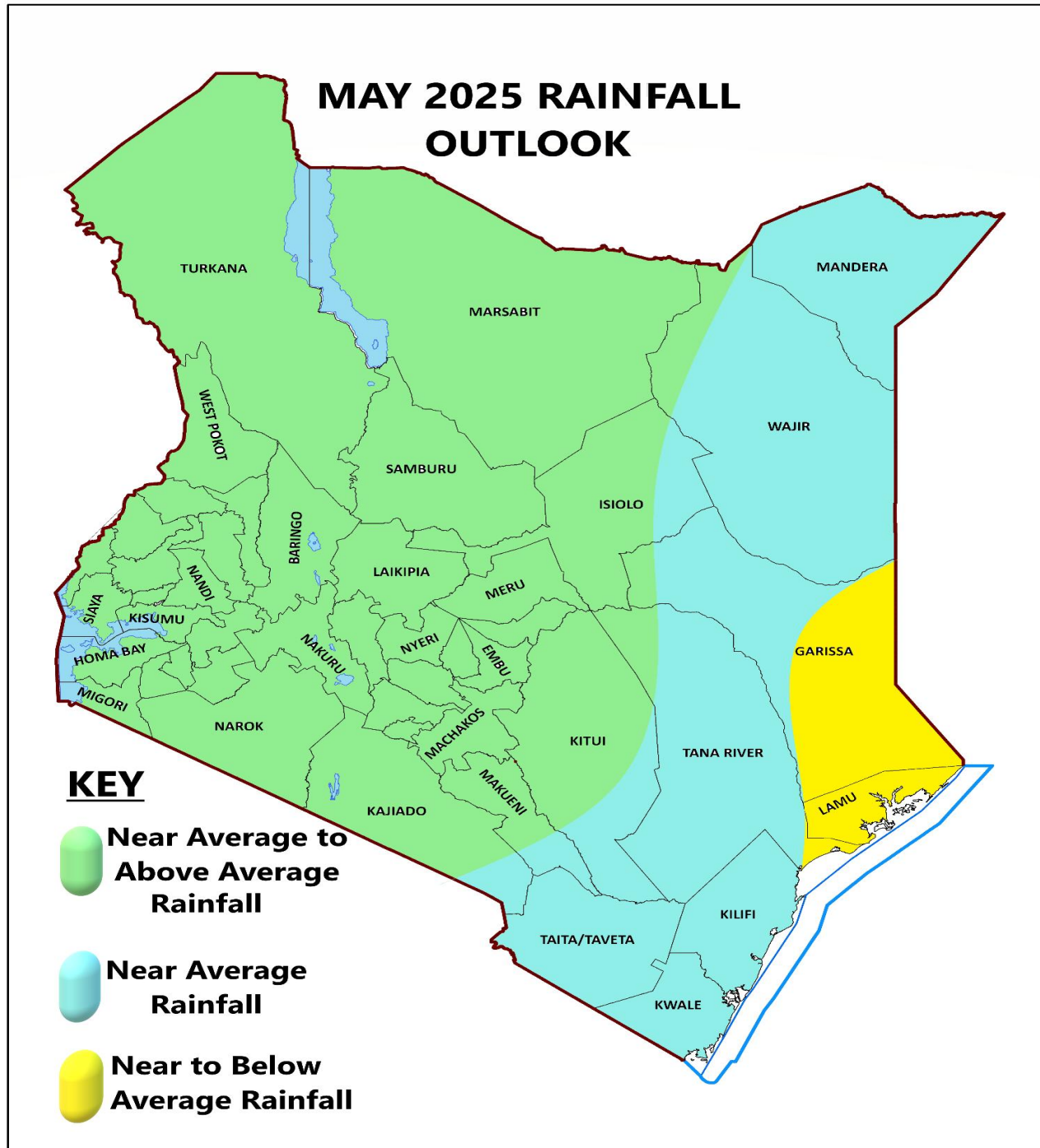
For further information, please contact:



Daniel M. Mbithi
County Director of Meteorological Services
Mobile: 0715255171
Email: mbithi_d@yahoo.com

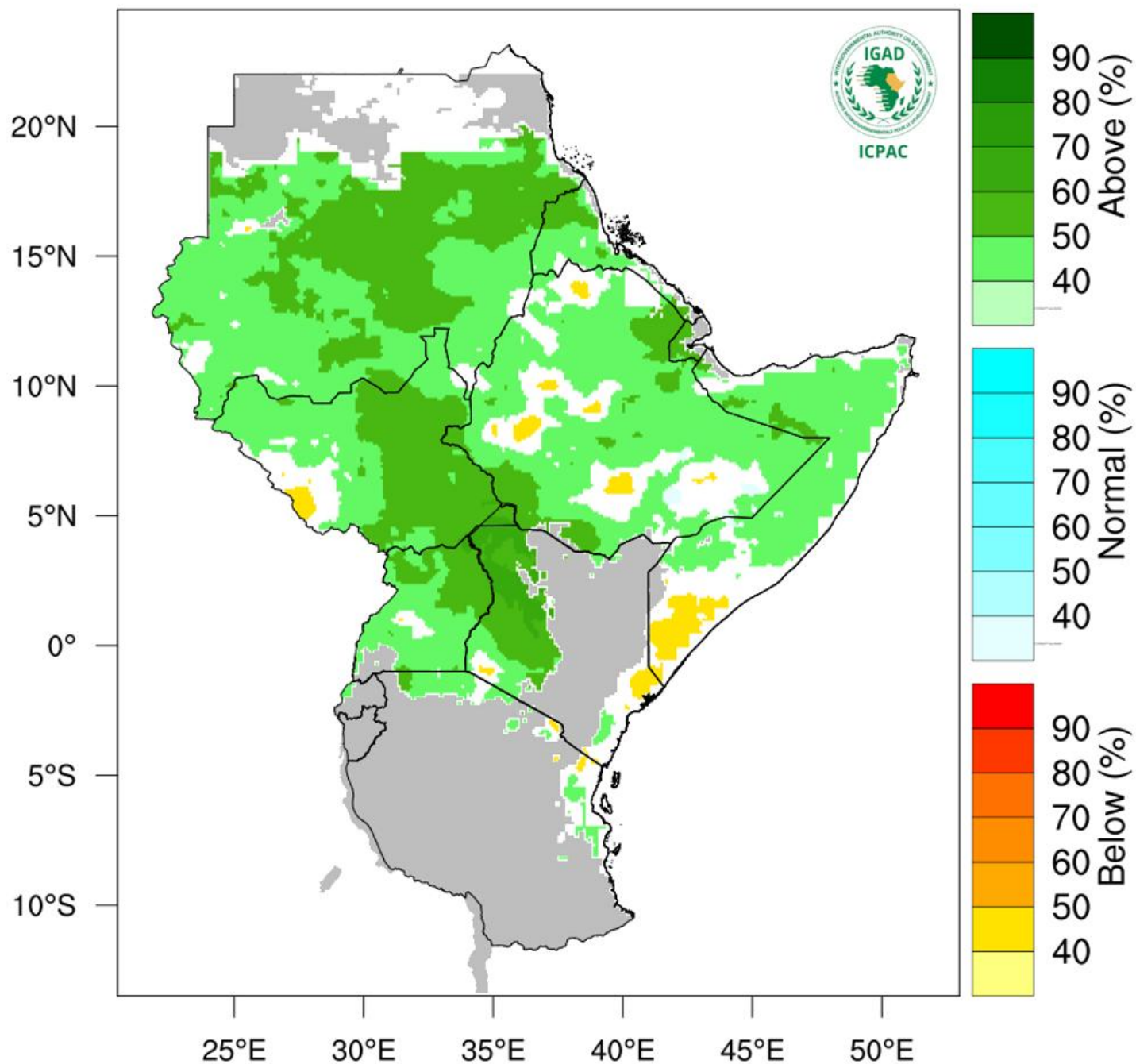
You can find more information about the climate and weather in Kenya on the KMD website <http://www.meteo.go.ke/>

Annex I: Rainfall forecast for the month of May 2025



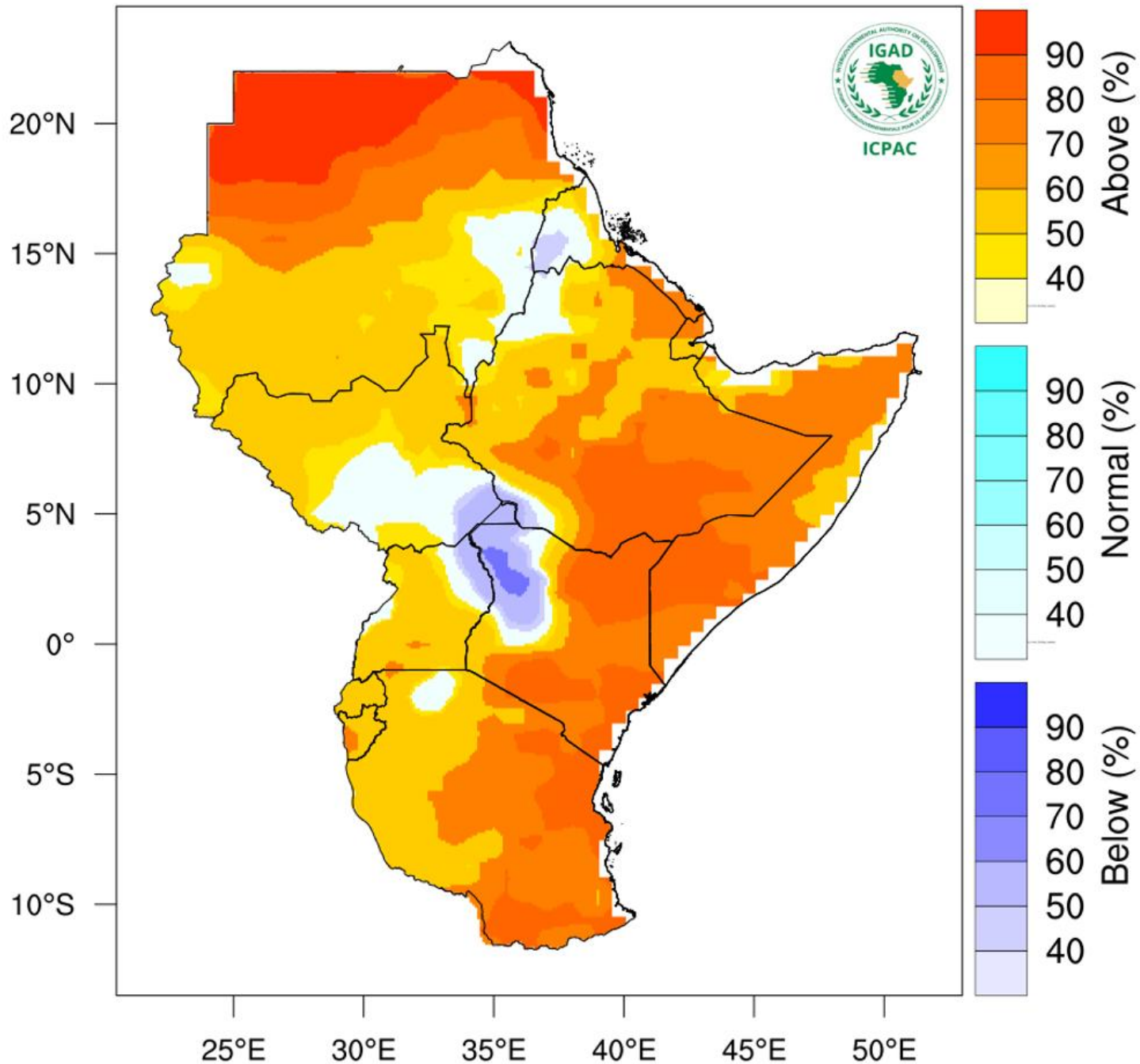
NB: Near to above normal rainfall expected over most places during the month of May 2025 in the County

Rainfall Probabilistic Forecast for May – Jul 2025



NB: Near to below normal conditions expected over most parts of the County between May to July 2025

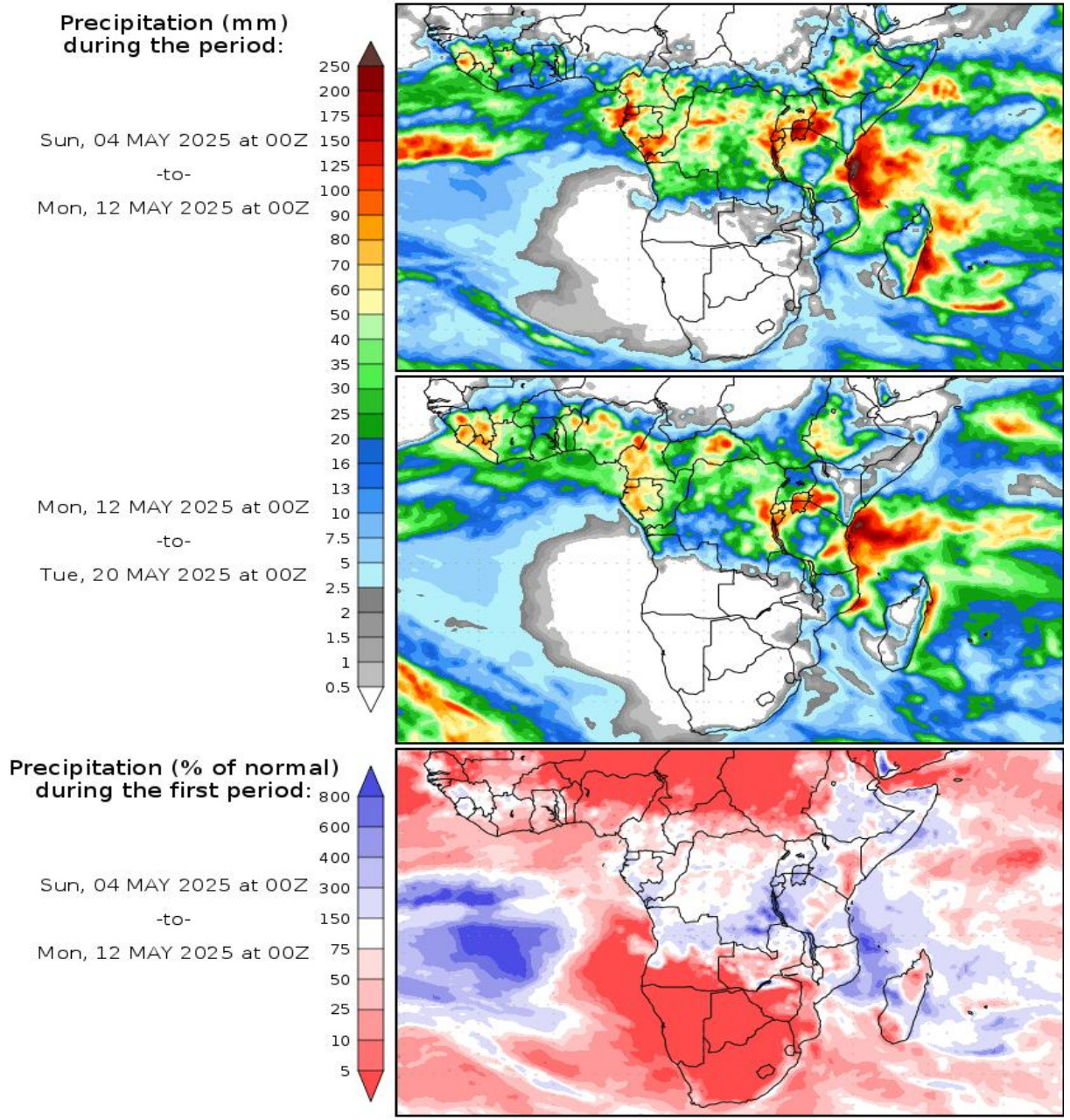
Temperature Probabilistic Forecast for May - Jul 2025



NB: Warmer than usual conditions indicated over most parts of Kitui County between May and July 2025

Annex IV: Rainfall forecast for 4th to 20th May, 2025

Precipitation Forecasts



Precipitation forecasts from the National Centers for Environmental Prediction.
Normal rainfall derived from Xie-Arkin (CMAP) Monthly Climatology for 1979-2003.
Forecast Initialization Time: 00Z04MAY2025

NB: Near to above normal conditions expected over most parts of the County between 4th to 20th May, 2025