



KENYA  
METEOROLOGICAL  
DEPARTMENT

*For further info:*

*Contact: Daniel M. Mbithi*

*Mobile No. 0715255171*

*Email: mbithi\_d@yahoo.com*

County Director of Meteorological Services Kitui County

## Weekly Weather forecast for Kitui County

### 1.1 PART I: WEEKLY FORECAST FOR THE PERIOD 3<sup>rd</sup> to 9<sup>th</sup> June 2025 Weather forecast Table

Sub County	Ward	Probable Total weekly amount (mm)	Probable weather Notes: Light rains <1-5 mm; Moderate rains 5-20 mm; Heavy rains 20-50 mm; Very heavy rains >50 mm							Winds (km/h kilometers per hour)	Temp (Tmax °C & Tmin °C)
			Tue	Wed	Thur	Fri	Sat	Sun	Mon	Weekly	Weekly
Mwingi West	Nguutani	<5mm	No rain	No rain	Light rain	Light rain	No rain	No rain	No rain	Easterly 21.6 km/h	Max 25-31 °C Min 16-20 °C
	Kyome/Thaana	<5mm	No rain	No rain	Light rain	Light rain	No rain	No rain	No rain		
	Kiomo/Kyethani	<5mm	No rain	No rain	Light rain	Light rain	No rain	No rain	No rain		
	Migwani	<5mm	No rain	No rain	Light rain	Light rain	No rain	No rain	No rain		
Mwingi North	Ngomeni	<5mm	No rain	No rain	Light rain	Light rain	No rain	No rain	No rain	Easterly 25.2 km/h	Max 28-34 °C Min 18-23 °C
	Kyuso	<5mm	No rain	No rain	Light rain	Light rain	No rain	No rain	No rain		
	Tseikuru	<5mm	No rain	No rain	Light rain	Light rain	No rain	No rain	No rain		
	Tharaka	<5mm	No rain	No rain	Light rain	Light rain	No rain	No rain	No rain		
	Mumoni	<5mm	No rain	No rain	Light rain	Light rain	No rain	No rain	No rain		
Mwingi Central	Central	<5mm	No rain	No rain	Light rain	Light rain	No rain	No rain	No rain		
	Kivou	<5mm	No rain	No rain	Light rain	Light rain	No rain	No rain	No rain		

Sub County	Ward	Probable Total weekly amount (mm)	<b>Probable weather</b> <b>Notes:</b> Light rains <1-5 mm; Moderate rains 5-20 mm; Heavy rains 20-50 mm; Very heavy rains >50 mm							Winds (km/h kilometers per hour)	Temp (Tmax °C & Tmin °C)
			Tue	Wed	Thur	Fri	Sat	Sun	Mon	Weekly	Weekly
	Mui	<5mm	No rain	No rain	Light rain	Light rain	No rain	No rain	No rain	Easterly 21.6 km/h	Max 27-33 °C Min 17-21 °C
	Waita	<5mm	No rain	No rain	Light rain	Light rain	No rain	No rain	No rain		
	Nuu	<5mm	No rain	No rain	Light rain	Light rain	No rain	No rain	No rain		
	Nguni	<5mm	No rain	No rain	Light rain	Light rain	No rain	No rain	No rain		
Kitui South	Ikanga/Kyatune	<5mm	No rain	No rain	Light rain	Light rain	No rain	No rain	No rain	Easterly 25.2 km/h	Max 29-33 °C Min 17-21 °C
	Mutomo/Kibwea	<5mm	No rain	No rain	Light rain	Light rain	No rain	No rain	No rain		
	Kanziko/Simisi	<5mm	No rain	No rain	Light rain	Light rain	No rain	No rain	No rain		
	Mutha	<5mm	No rain	No rain	Light rain	Light rain	No rain	No rain	No rain		
	Ikutha	<5mm	No rain	No rain	Light rain	Light rain	No rain	No rain	No rain		
	Athi	<5mm	No rain	No rain	Light rain	Light rain	No rain	No rain	No rain		
Kitui East	Chuluni	<5mm	No rain	No rain	Light rain	Light rain	No rain	No rain	No rain	Easterly 21.6 km/h	Max 26-34 °C Min 16-21 °C
	Nzambani	<5mm	No rain	No rain	Light rain	Light rain	No rain	No rain	No rain		
	Mutito/Kaliku	<5mm	No rain	No rain	Light rain	Light rain	No rain	No rain	No rain		
	Zombe/Mwitika	<5mm	No rain	No rain	Light rain	Light rain	No rain	No rain	No rain		
	Voo/Kyamatu	<5mm	No rain	No rain	Light rain	Light rain	No rain	No rain	No rain		
	Endau/Malalani	<5mm	No rain	No rain	Light rain	Light rain	No rain	No rain	No rain		
Kitui Rural	Mbitini	<5mm	No rain	No rain	Light rain	Light rain	No rain	No rain	No rain	Easterly 21.6 km/h	Max 25-31 °C Min 15-19 °C
	Kisasi	<5mm	No rain	No rain	Light rain	Light rain	No rain	No rain	No rain		
	Kyangi	<5mm	No rain	No rain	Light rain	Light rain	No rain	No rain	No rain		
	Yatta/Kwa Vonza	<5mm	No rain	No rain	Light rain	Light rain	No rain	No rain	No rain		
Kitui West	Kauwi	<5mm	No rain	No rain	Light rain	Light rain	No rain	No rain	No rain	Easterly 18.0 km/h	Max 23-30 °C Min 15-18 °C
	Mutonguni	<5mm	No rain	No rain	Light rain	Light rain	No rain	No rain	No rain		
	Matinyani	<5mm	No rain	No rain	Light rain	Light rain	No rain	No rain	No rain		
	Kwa Mutonga/Kithumula	<5mm	No rain	No rain	Light rain	Light rain	No rain	No rain	No rain		
Kitui	Kyangwithya East	<5mm	No rain	No rain	Light rain	Light rain	No rain	No rain	No rain		

Sub County	Ward	Probable Total weekly amount (mm)	Probable weather Notes: Light rains <1-5 mm; Moderate rains 5-20 mm; Heavy rains 20-50 mm; Very heavy rains >50 mm							Winds (km/h kilometers per hour)	Temp (Tmax °C & Tmin °C)
			Tue	Wed	Thur	Fri	Sat	Sun	Mon	Weekly	Weekly
Central	Kyangwithya West	<5mm	No rain	No rain	Light rain	Light rain	No rain	No rain	No rain	Easterly 18.0 km/h	Max 24-31 °C Min 15-20 °C
	Township	<5mm	No rain	No rain	Light rain	Light rain	No rain	No rain	No rain		
	Mulango	<5mm	No rain	No rain	Light rain	Light rain	No rain	No rain	No rain		
	Miambani	<5mm	No rain	No rain	Light rain	Light rain	No rain	No rain	No rain		

## 1.2 Review for May 2025

May 2025 marked the end of the Long Rains across Kitui county. Below average rainfall was recorded over most parts of the county. Temperatures were higher than average across most parts of the county. Strong southerly to south-easterly winds with speeds exceeding 25 knots (12.86 m/s) were experienced occasionally over the county during the month. The winds were much stronger (up to 30 knots) on 24th and 25th May.

## 1.3 Outlook for June 2025

The June 2025 outlook predicts generally dry and sunny conditions for most parts of the county. Occasional cool and cloudy conditions with light rains are expected in the county as the cool season gradually sets in. Temperatures are anticipated to be higher than average across several parts of the country. However, despite the warmer than average temperatures expected, high ground areas may experience low daytime temperatures below 24°C.

## 1.4 PART II: FURTHER ADVISORIES

### **SUMMARY ABOUT THE WEEKLY FORECAST:**

Sunny and dry conditions expected over most places, with a chance (probability <33%) of light rains over the high ground areas. Maximum temperatures are expected to range from 23°C - 34°C, while minimum temperatures are expected to range from 15°C - 23°C. Strong southerly to south-easterly winds with speeds exceeding 25 knots (12.86 m/s) are expected to persist in most parts of the County. *Community members advised to inculcate the culture of being “weather – ready”, “climate – smart” and “water – wise” as we navigate the unfamiliar and chaotic environment of a changing climate. This will help them adapt to a changing climate while at the same time mitigating the adverse effects of Climate Change and Variability, hence becoming more resilient to the vagaries of Climate Change.* In light of this weather forecast, farmers are also advised to consult with respective local extension officers from the County Ministry of Agriculture and Livestock at ward level for more advice on the best farm practices.

**Note: 1 mm of rainfall is equivalent to 1 litre of rainfall per square meter.**

**KEY OF SCIENTIFIC WORDS USED**

Rainfall categories	
Range	Category
<5 mm	Light
5 - 20mm	Moderate
20 - 50mm	Heavy
>50mm	Very heavy
Rainfall coverage	
Term	Meaning
Most Places	Between 66% and 100%
Several Places	Between 33% and 66%
Few Places	Below 33%
<p><b>Ushauri wa Idara ya Utabiri wa Hali ya Hewa:</b> Mvua za Masika zimeisha katika Kaunti ya Kitui. Wakulima wanashauriwa waendelea kuvuna chakula chao na napia kuianika vizuri kwa jua hili kuepukana na athari za sumu kuvu yaani 'aflotoxin'.</p>	

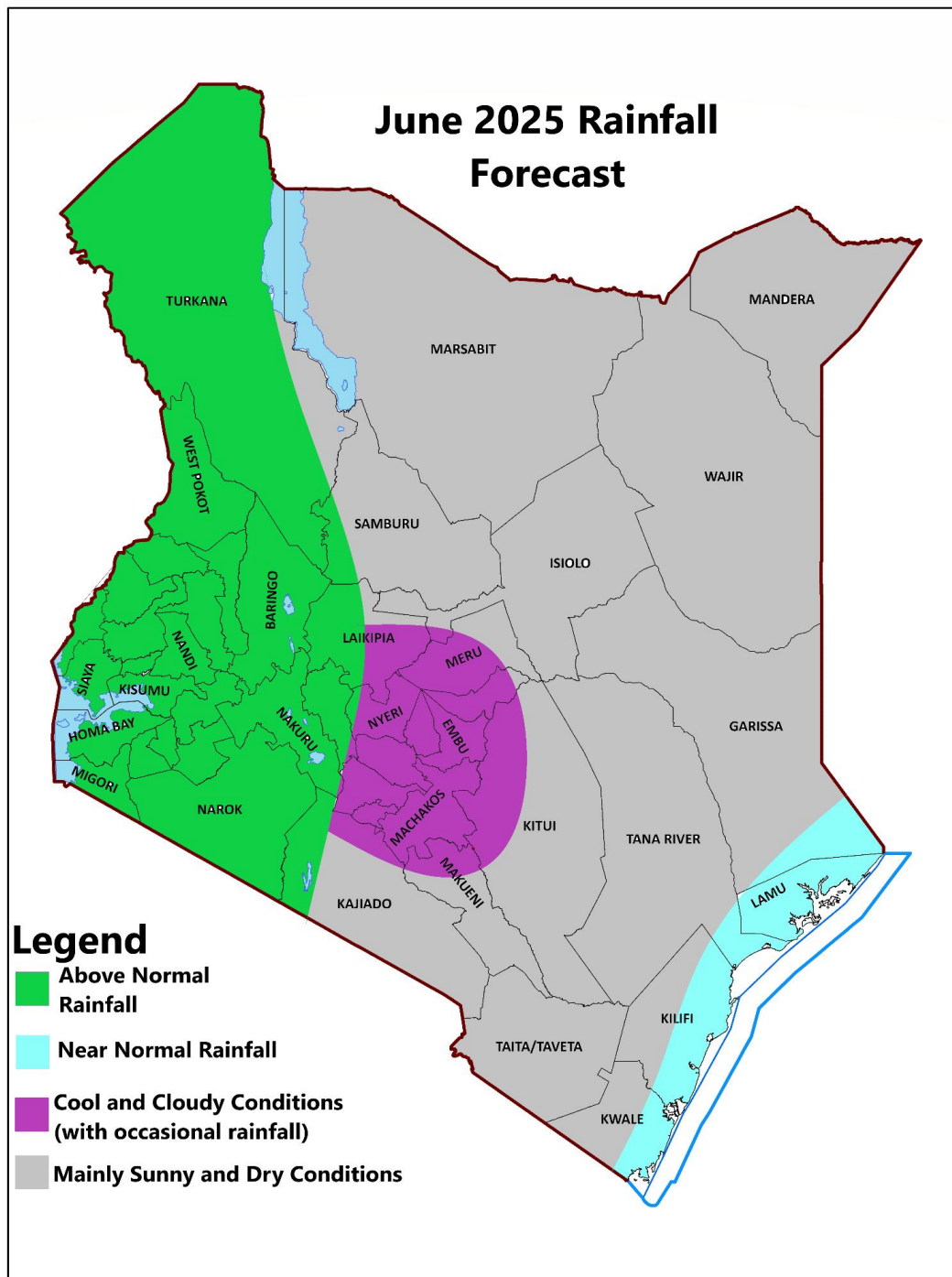
**For further information, please contact:**



Daniel M. Mbithi  
County Director of Meteorological Services  
Mobile: 0715255171  
Email: [mbithi\\_d@yahoo.com](mailto:mbithi_d@yahoo.com)

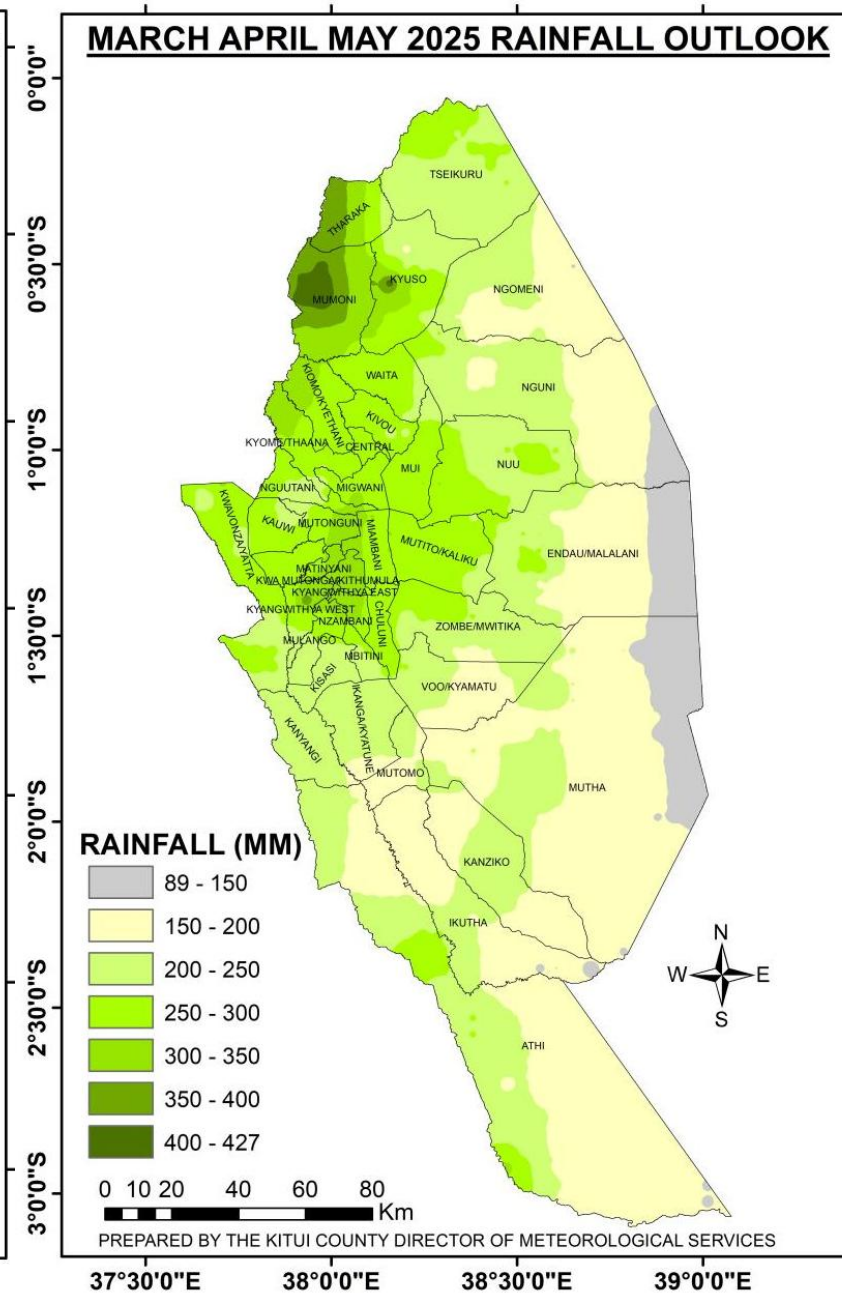
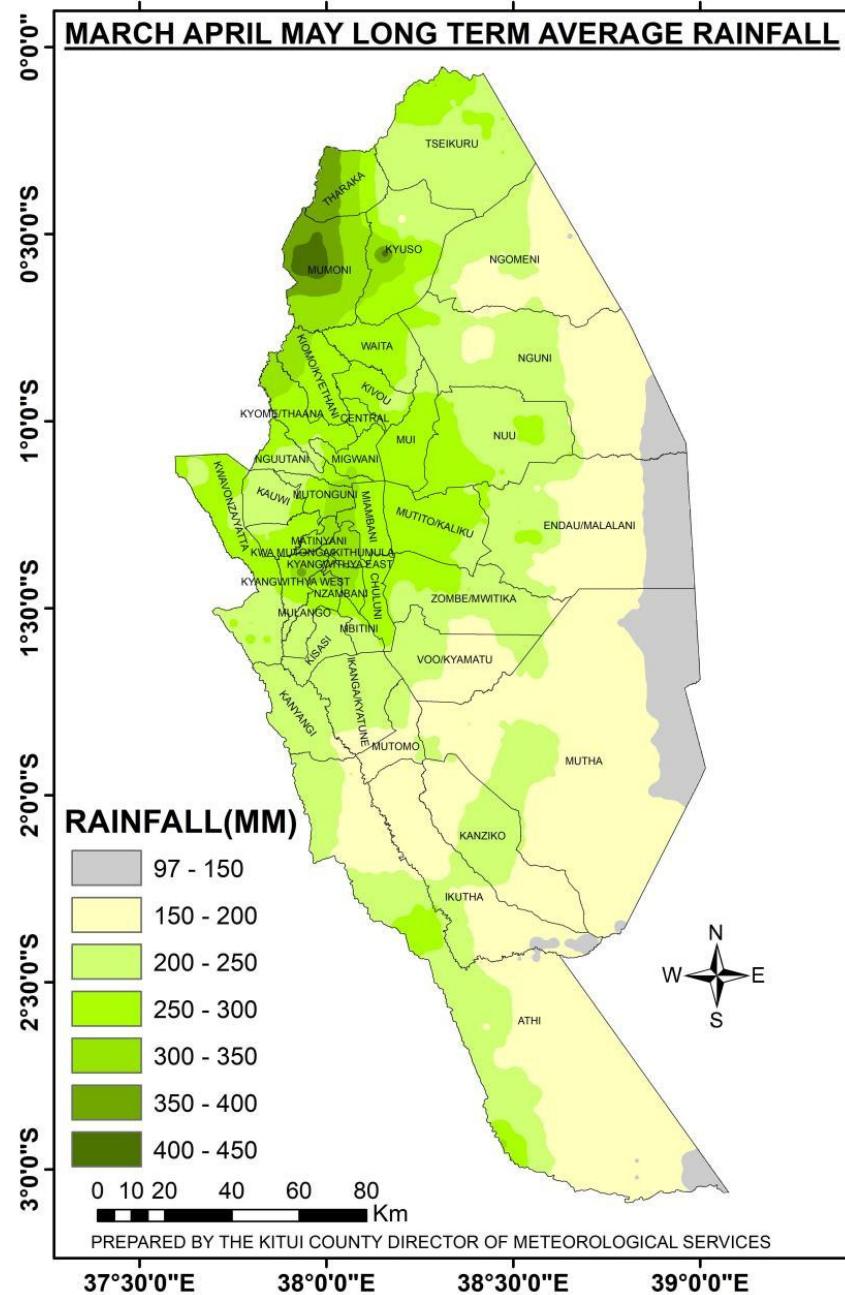
**You can find more information about the climate and weather in Kenya on the KMD website <http://www.meteo.go.ke/>**

## Annex I: Rainfall forecast for the month of June 2025

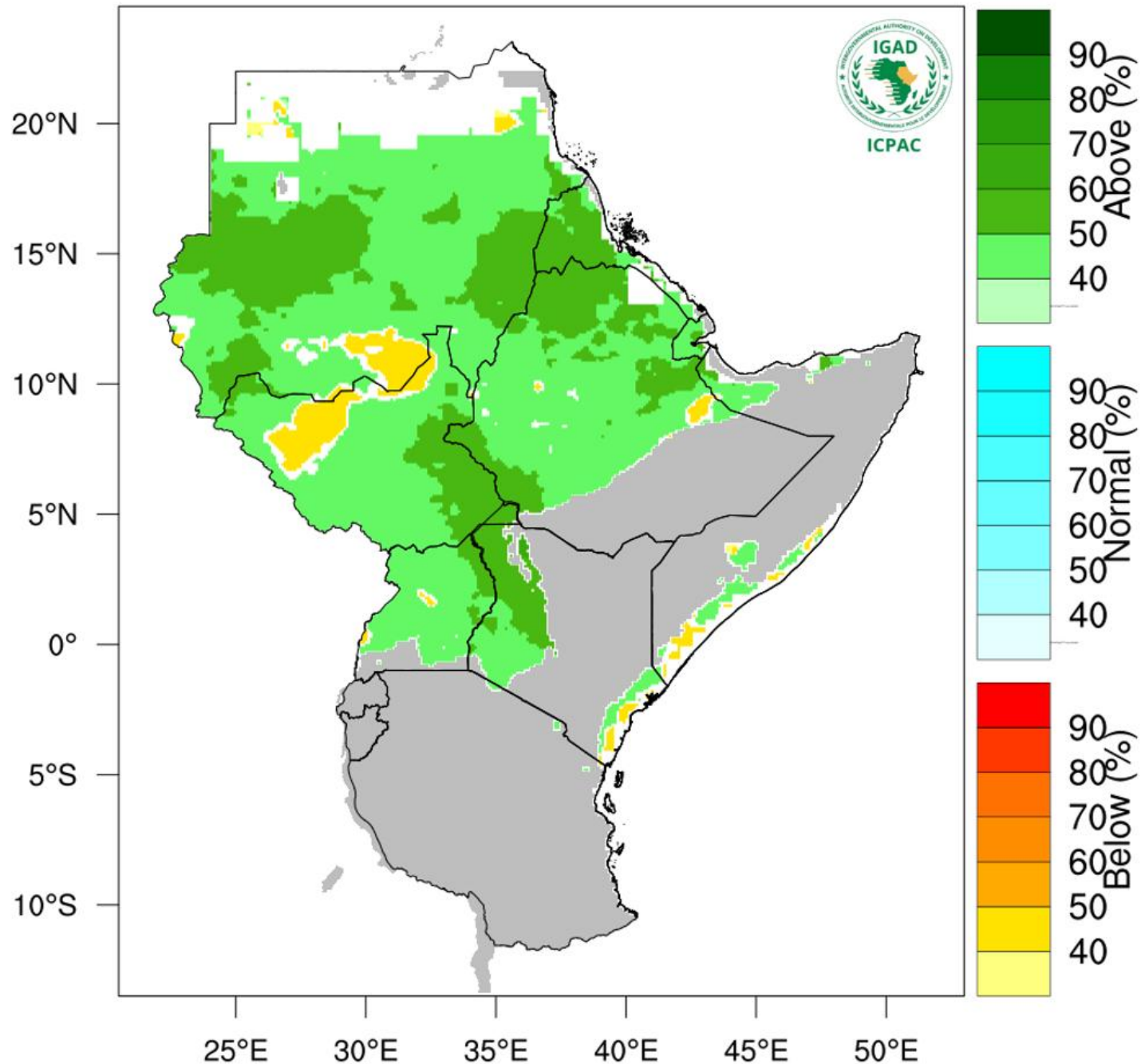


*NB: Below normal rainfall expected over most places during the month of June 2025 in the County*

## Annex II: Rainfall Climatology versus Rainfall Forecast for the months of March to May (MAM) 2025

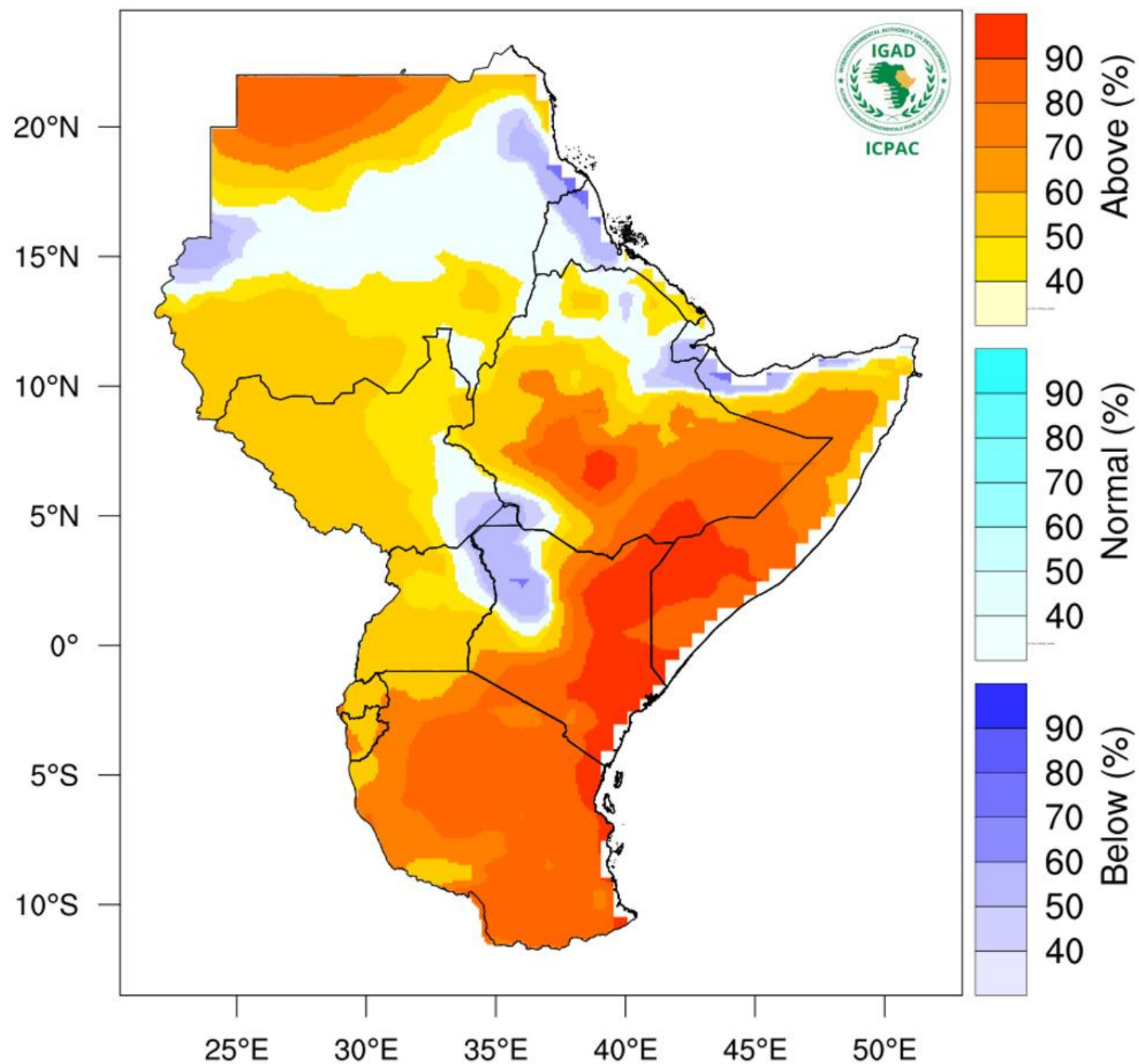


## Rainfall Probabilistic Forecast for Jun - Aug 2025



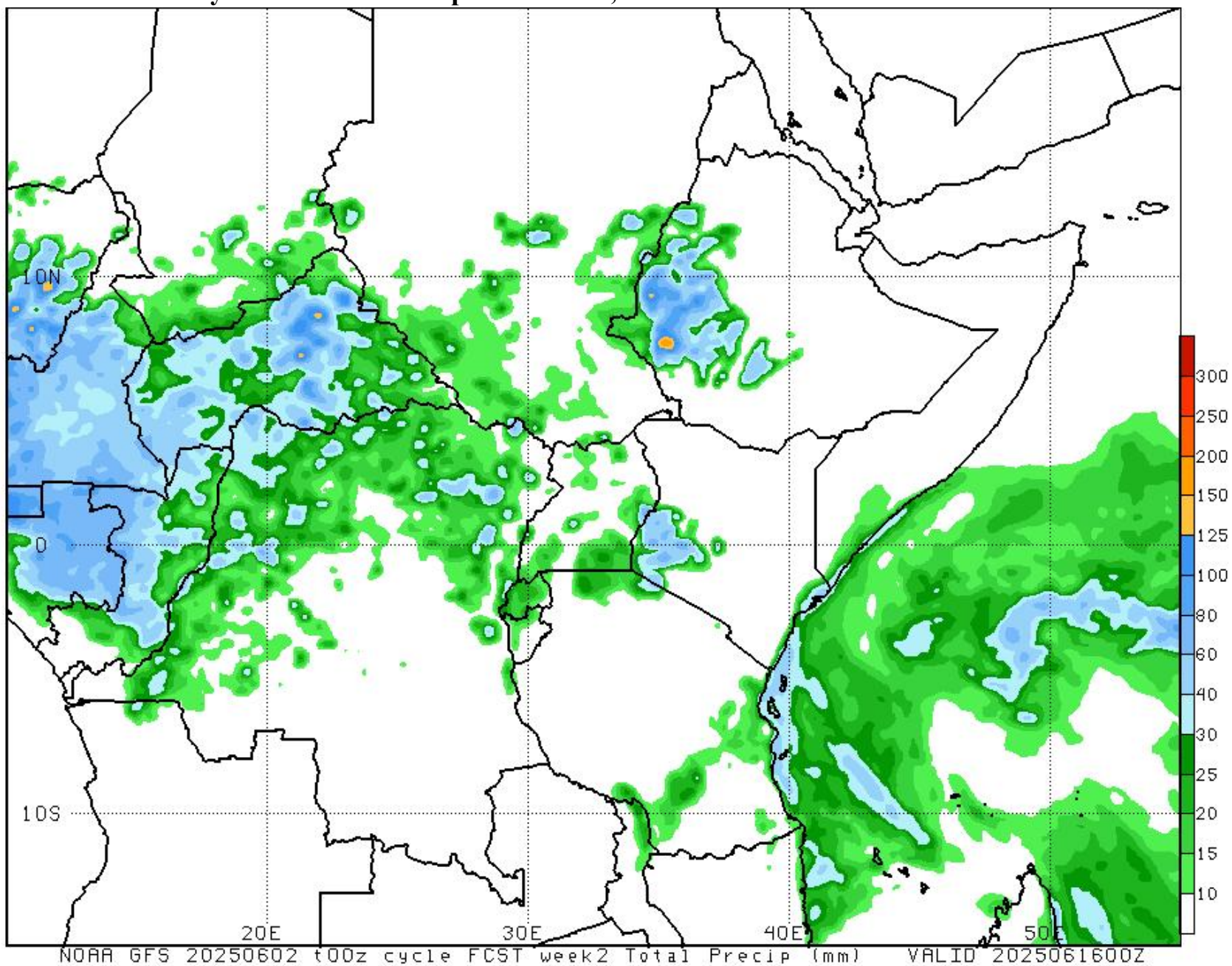
NB: Drier than normal conditions expected over most parts of the County between June to August 2025

## Temperature Forecast for Jun - Aug 2025



NB: Warmer than usual conditions indicated over most parts of Kitui County between June and August 2025

## Annex V: Fourteen days rainfall forecast up to 16<sup>th</sup> June, 2025



*NB: Drier than normal conditions expected over most parts of the County between 3<sup>rd</sup> to 16<sup>th</sup> June, 2025*