



REPUBLIC OF KENYA
MINISTRY OF ENVIRONMENT, CLIMATE CHANGE AND FORESTRY
KENYA METEOROLOGICAL DEPARTMENT

COUNTY METEOROLOGICAL SERVICES, LAIKIPIA COUNTY
P.O. BOX 192, 10400 NANYUKI

e-mail: kmdcdmlaikipia@gmail.com, **CDMS:** Njiru David: **Tel.** 0721218207

For further information, please contact: Director KMD

Tel: +254724255153/4

e-mail: director@meteo.go.ke, info@meteo.go.ke **Website:** <http://www.meteo.go.ke>

Ref: MET/Laikipia County/05/25

Date of issue; 02 June, 2025

WEATHER FORECAST FOR THE NEXT SEVEN DAYS VALID 27 May – 02 Jun, 2025

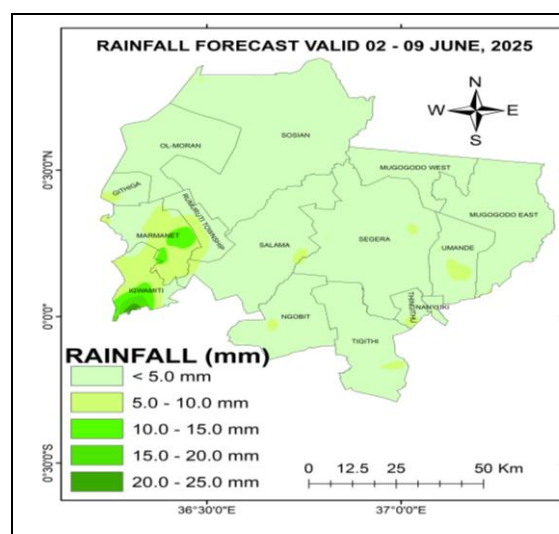
Forecast for the next Seven days (03 - 09 June, 2025) indicates;

- Cloudy and sunny conditions expected over most places
- However, light to moderate showers are likely over few Places
- The Maximum temperatures expected to range between 20 - 35°C and the (Minimum) temperatures to range 06 - 20°C

Review of weather for the last seven-days (27 May – 02 Jun, 2025)

- Stations that recorded rains includes, Ol Jogi, Nyahururu, Survey, Kinamba, lokusero etc
- *Comparing the last two weeks the precipitation amounts decreased over most places.*
- Both the day time (Max) temperatures and the Night time (Min) temperatures increased

Expected Rainfall Distribution for the Next Seven Days (03 – 09 Jun, 2025)



Expect cloudy and sunny conditions with chances of afternoon showers over a few places

Less than 30.0 mm of cumulated weekly rainfall is expected over few places as indicated in the adjacent rainfall forecast map.

Detailed Weather Forecast for the Next Seven Days Valid 03 - 09 June, 2025

REGION	TIME	TUESDAY 03/06/2025	WEDNESDAY 04/06/2025	THURSDAY 05/06/2025	FRIDAY 06/06/2025	SATURDAY 07/06/2025	SUNDAY 08/06/2025	MONDAY 09/06/2025
LAIKIP IA NORTH	Morning	Cloudy/ Sunny	Sunny	Cloudy/Sunny	Sunny	Sunny	Sunny	Cloudy/Sunny
	Afternoon	Sunny Intervals	Sunny Intervals	Showers over several places	Showers over Few Places	Showers over Few Places	Sunny Intervals	Sunny Intervals
	Night	Partly Cloudy	Partly Cloudy	Partly Cloudy	Partly Cloudy	Partly Cloudy	Partly Cloudy	Partly Cloudy
TEMPS	Max/ Min	27/14	26/14	25/13	27/14	28/14	28/13	28/14
LAIKIP IA EAST	Morning	Sunny	Cloudy/Sunny	Cloudy/Sunny	Cloudy/ Sunny	Sunny	Sunny	Cloudy/Sunny
	Afternoon	Showers over Few Places	Showers over Few Places	Showers & TS over places	Showers over several Places	Sunny Intervals	Showers over Few Places	Sunny Intervals
	Night	Partly Cloudy	Partly Cloudy	Partly Cloudy	Partly Cloudy	Partly Cloudy	Partly Cloudy	Partly Cloudy
TEMPS	Max/ Min	26/12	25/12	22/12	22/12	26/12	26/12	25/12
LAIKIP IA WEST	Morning	Cloudy/ Sunny	Cloudy/Sunny	Cloudy/Sunny	Cloudy/ Sunny	Sunny	Sunny	Sunny
	Afternoon	Showers over Few Places	Showers over Few Places	Showers & TS over Few places	Showers & TS over Few Places	Showers over Few Places	Showers over Few Places	Sunny Intervals
	Night	Partly/ Cloudy	Partly Cloudy	Partly Cloudy	Partly Cloudy	Partly Cloudy	Partly Cloudy	Partly Cloudy
TEMPS	Max/ Min	26/12	26/10	24/09	24/09	25/12	26/09	26/10

➤ **TS – Thunderstorms; AWS - Automatic Weather Station**

➤ **Further outlook indicates mainly sunny conditions with rains over Few Places in the month of June 2025.**

COMPARING CUMMULATED RAINFALL AMOUNTS FOR THE LAST TWO WEEKS

STATION	20 – 26 May, 2025	27 May – 02 Jun, 2025
Mutara Orchards (Office Area)	5.6 mm	1.0 mm
Lamuria Met. Stn.	8.2 mm	-
Rumuruti	-	1.1 mm
Muhotetu CC	14.7 mm	Nil
Sipili	14.0 mm	-
Ngárua (Kinamba – AWS)	14.1 mm	0.5 mm
OI Mysor Sosian	-	-
Mugie Conservancy (Centre)	-	-
Laikipia Airbase (Nanyuki)	30.2 mm	Nil
Kimanjo Pri. Sch AWS	1.2 mm	Nil
Survey Sec. Sch. AWS	27.7 mm	1.5 mm
Lokusero Sec. Sch. AWS	0.9 mm	0.9 mm
Dol Dol Boys Sch. (AWS)	6.1 mm	0.4 mm
Ngobit Police Stn. AWS	18.1 mm	Nil
Lol-Daiga Stations		
1). Barrier	Nil	Nil
2). Central	7.0 mm	Nil
3). Northern	Nil	Nil
OI Pejeta Rainfall Stations		
1). Kamock	21.0 mm	Nil
2). OPC HQ site	48.0 mm	Nil
3). Golf 3	31.0 mm	Nil
4). Oscar 2 - 5	11.0 mm	Nil
5). Research	41.0 mm	Nil
6). Sirima	24.0 mm	Nil
7). Mutara (Zulu 3)	27.0 mm	Nil
OI Jogi Conservancy Rainfall Stations		
1). Main House	3.8 mm	6.3 mm
2). Marula	8.2 mm	3.8 mm
Borana Conservancy Rainfall Stations		
1). Headquarters	Nil	Nil
2). Waitabit	2.0 mm	Nil

KEY SCIENTIFIC TERMS USED IN THE FORECAST			
RAINFALL CATEGORIES		RAINFALL COVERAGE	
		TERMs	MEANING
< 5 mm	Light	Most places	Between 67% and 100%
5 – 20 mm	Moderate	Several Places	Between 33% and 67%
20 – 50 mm	Heavy	Few places	Below 33%
> 50 mm	Very heavy		

Note; *It's important to follow up this weekly forecast with the 24hr forecast issued daily by the Kenya Meteorological Department.*