



REPUBLIC OF KENYA
MINISTRY OF ENVIRONMENT AND FORESTRY
KENYA METEOROLOGICAL DEPARTMENT

TAITA TAVETA COUNTY
MONTHLY WEATHER FORECAST FOR
JUNE, 2025

Date of Issue: 3rd June 2025

Forecast Period: 1st – 30th June 2025

1. HIGHLIGHTS

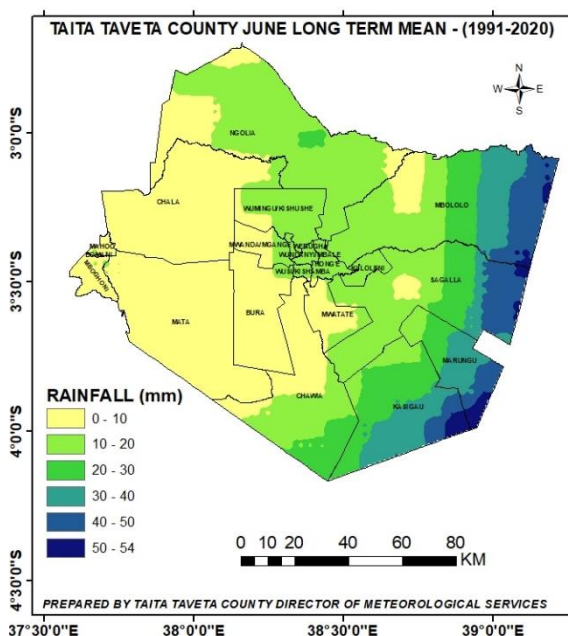
1.1 Forecast for June 2025

June marks the gradual onset of the cool season in Taita Taveta County. The month is expected to be generally dry and sunny, though occasional cool and cloudy conditions with light rainfall are likely in some areas, especially over the highlands. Temperatures are forecast to remain higher than average across several parts of the county.

1.2 Climate Review for May 2025

May 2025 signalled the end of the Long Rains season in most parts of the county. Below-average rainfall was recorded, and temperatures remained higher than normal throughout. Additionally, strong southerly to south-easterly winds, occasionally exceeding 46 km/h, were experienced across parts of the county. Peak wind speeds reached 56 km/h on the 24th and 25th of May.

2. DETAILED FORECAST FOR JUNE 2025



In a typical year, June marks the beginning of the cool and dry season in Taita Taveta County. The weather is generally characterized by:

- (i) Cooler temperatures, especially over highland areas like Wundanyi and parts of Taita Hills
- (ii) Cloudy mornings that may clear up during the day
- (iii) Light rains or drizzle, mostly over high-elevation zones
- (iv) Dry and sunny conditions in the lowlands (e.g., Voi, Taveta, and Mwatate)
- (v) Strong southerly to south-easterly winds, particularly in open and semi-arid areas

This month typically sees below-average rainfall, especially compared to the long rains season (March–May).

Figure 1: Long-Term Average Rainfall for June (1991–2020)

Table 1: Category and intensity of precipitation, and probability of rainfall distribution over places

<u>Category</u>	<u>Rainfall Amount</u>	<u>Rainfall Distribution</u>	
		<u>Term</u>	<u>Meaning</u>
Light	Less than 5.0mm		
Moderate	5 to 20 mm	Most Places	Between 66% and 100%
Heavy	20 to 50 mm	Several Places	Between 33% and 66%
Very Heavy	Over 50mm	Few Places	Between 0 and 33%

Most places of the county will experience dry and sunny conditions throughout June. However, intermittent cool and cloudy weather with light rains may occur over localized highland regions. These weather patterns are typical of the early cold season in the region.

Table 2 indicates a summary of the expected temperature ranges per county, during the first two weeks and the next two weeks of June, 2025.

Table 2: Expected air temperature over the sub-counties

S/No.	SUB-COUNTY	FIRST HALF OF JUNE 2025		SECOND HALF OF JUNE 2025	
		Minimum	Maximum	Minimum	Maximum
1	Wundanyi	14°C	23°C	13°C	21°C
2	Mwatate	19°C	28°C	17°C	26°C
3	Voi	21°C	30°C	20°C	29°C
4	Taveta	19°C	28°C	17°C	26°C

3. POTENTIAL IMPACTS

3.1 Disaster Risk Management

Occasional strong winds (southerly to south-easterly; westerly over Taveta sub-county), with speeds which may exceed 46 km/h, are expected. These may result in:

- Increased dust levels and reduced visibility in arid and semi-arid areas
- Damage to weak structures, power lines, and trees
- Disruption to outdoor activities and aviation operations

Advisory: Residents and relevant stakeholders are urged to stay informed through official forecasts and exercise caution, especially in vulnerable areas.

3.2 Sectoral Impacts

3.2.1 Agriculture and Food Security

Few parts of Taita Taveta County may receive minimal rainfall. Farmers should continue monitoring local advisories and implement adaptive farming practices where possible.

3.2.2 Health Sector

In Taita Taveta County, a combination of cold weather, dry conditions, and dusty air can lead to several health problems. The most common include respiratory issues like asthma and pneumonia, as well as eye infections, all exacerbated by the dryness and dust.

3.2.3 Transport and Public Safety

- If available, fog in colder, cloudy regions may reduce road visibility, increasing accident risks.
- Light rains/drizzles could make roads slippery, particularly in hilly or poorly drained areas.

Advisory: All road users, especially motorists, are urged to drive cautiously and observe weather-related warnings.

3.2.4 Water Resources Management and Energy

In Taita Taveta County, declining reservoir levels, driven by climate change and other environmental pressures, are increasingly threatening water availability. This poses significant risks to agriculture, hydropower generation, and access to domestic and industrial water supplies. If not addressed, these shortages could worsen food insecurity, disrupt livelihoods, and strain the local economy and community resilience.

Advisory

Residents, farmers, water users, and local authorities are advised to adopt water conservation practices and explore sustainable water management solutions, including rainwater harvesting and efficient irrigation methods. It is critical to monitor water usage, protect catchment areas, and support community-based resource management initiatives. Stakeholders are also encouraged to work closely with county and national agencies to implement climate adaptation strategies that enhance water security and support long-term economic stability.

3.2.5 Environment and Forestry

The forecast aligns with the ongoing national tree-planting campaign, which targets the planting of 15 billion trees by 2032. This initiative seeks to:

- Increase tree cover to 30%
- Restore 5.1 million hectares of degraded land
- Promote climate resilience, biodiversity, and environmental sustainability

Call to Action: If and where applicable, stakeholders—government agencies, community organizations, private sector actors—are encouraged to leverage the favourable climatic window to accelerate tree planting and environmental restoration efforts.

4. FINAL NOTE

This monthly forecast should be used in conjunction with weekly weather updates issued every Monday to provide more localized and up-to-date information.

Prepared by:
Geoffrey Mwangela
County Director of Meteorological Services
Taita Taveta County.
Mobile: 0721 565609
Email: cdmsttc@gmail.com or geomwo2020@gmail.com