



KENYA
METEOROLOGICAL
DEPARTMENT

For further info:

Contact: Daniel M. Mbithi

Mobile No. 0715255171

Email: mbithi_d@yahoo.com

County Director of Meteorological Services Tharaka Nithi County

Weekly Weather forecast for Tharaka Nithi County

1.1 PART I: WEEKLY FORECAST FOR THE PERIOD 3rd to 9th June 2025 WEATHER FORECAST TABLE

Sub County	Ward	Probable Total weekly amount (mm)	Probable weather Notes: Light rains <1-5 mm; Moderate rains 5-20 mm; Heavy rains 20-50 mm; Very heavy rains >50 mm							Winds (km/h kilometers per hour)	Temp (Tmax °C & Tmin °C)
			Tue	Wed	Thur	Fri	Sat	Sun	Mon	Weekly	Weekly
Tharaka	Gatunga	<5mm	No rain	No rain	Light rain	Light rain	No rain	No rain	No rain	Easterly 21.6 km/h	Max 31-34 °C Min 20-22 °C
	Mukothima	<5mm	No rain	No rain	Light rain	Light rain	No rain	No rain	No rain		
	Nkondi	<5mm	No rain	No rain	Light rain	Light rain	No rain	No rain	No rain		
	Chiakaringa	<5mm	No rain	No rain	Light rain	Light rain	No rain	No rain	No rain		
	Marimanti	<5mm	No rain	No rain	Light rain	Light rain	No rain	No rain	No rain		
Chuka/Igambang'ombe	Mariani	<5mm	No rain	No rain	Light rain	Light rain	No rain	No rain	No rain	Easterly 18.0 km/h	Max 24-31 °C Min 16-20 °C
	Karingani	<5mm	No rain	No rain	Light rain	Light rain	No rain	No rain	No rain		
	Magumoni	<5mm	No rain	No rain	Light rain	Light rain	No rain	No rain	No rain		
	Mugwe	<5mm	No rain	No rain	Light rain	Light rain	No rain	No rain	No rain		
	Igambang'ombe	<5mm	No rain	No rain	Light rain	Light rain	No rain	No rain	No rain		

Sub County	Ward	Probable Total weekly amount (mm)	Probable weather Notes: Light rains <1-5 mm; Moderate rains 5-20 mm; Heavy rains 20-50 mm; Very heavy rains >50 mm							Winds (km/h kilometers per hour)	Temp (Tmax °C & Tmin °C)
			Tue	Wed	Thur	Fri	Sat	Sun	Mon	Weekly	Weekly
Maara	Mwimbi	<10mm	No rain	Light rain	Light rain	Light rain	No rain	No rain	No rain	Easterly 18.0 km/h	Max 20-28 °C Min 13-17 °C
	Mitheru	<10mm	No rain	Light rain	Light rain	Light rain	No rain	No rain	No rain		
	Muthambi	<10mm	No rain	Light rain	Light rain	Light rain	No rain	No rain	No rain		
	Ganga	<10mm	No rain	Light rain	Light rain	Light rain	No rain	No rain	No rain		
	Chogoria	<10mm	No rain	Light rain	Light rain	Light rain	No rain	No rain	No rain		

1.2 Review for May 2025

May 2025 marked the end of the Long Rains across Tharaka Nithi county. Below average rainfall was recorded over most parts of the county. Temperatures were higher than average across most parts of the county. Strong southerly to south-easterly winds with speeds exceeding 25 knots (12.86 m/s) were experienced occasionally over the county during the month. The winds were much stronger (up to 30 knots) on 24th and 25th May.

1.3 Outlook for June 2025

The June 2025 outlook predicts generally dry and sunny conditions for most parts of the county. Occasional cool and cloudy conditions with light rains are expected in the county as the cool season gradually sets in. Temperatures are anticipated to be higher than average across several parts of the country. However, despite the warmer than average temperatures expected, high ground areas may experience low daytime temperatures below 20°C.

1.4 PART II: FURTHER ADVISORIES

SUMMARY ABOUT THE WEEKLY FORECAST:

Sunny and dry conditions expected over most places, with a chance (probability <33%) of light rains over the high ground areas. Maximum temperatures are expected to range from 20°C - 33°C, while minimum temperatures are expected to range from 13°C - 22°C. Strong southerly to south-easterly winds with speeds exceeding 25 knots (12.86 m/s) are expected in most parts of the County. *Community members advised to inculcate the culture of being “weather – ready”, “climate – smart” and “water – wise” as we navigate the unfamiliar and chaotic environment of a changing climate. This will help them adapt to a changing climate while at the same time mitigating the adverse effects of Climate Change and Variability, hence becoming more resilient to the vagaries of Climate Change. In light of this weather forecast, farmers are also advised to consult with respective local extension officers from the County Ministry of Agriculture and Livestock at ward level for more advice on the best farm practices.*

Note: 1 mm of rainfall is equivalent to 1 litre of rainfall per square meter.

KEY OF SCIENTIFIC WORDS USED

Rainfall categories	
Range	Category
<5 mm	Light
5 - 20mm	Moderate
20 - 50mm	Heavy
>50mm	Very heavy
Rainfall coverage	
Term	Meaning
Most Places	Between 66% and 100%
Several Places	Between 33% and 66%
Few Places	Below 33%
<p>Ushauri wa Idara ya Utabiri wa Hali ya Hewa: Mvua za Masika zimeisha katika Kaunti ya Tharaka Nithi. Wakulima wanashauriwa waendeleo kuvuna chakula chao na napia kuianika vizuri kwa jua hili kuepukana na athari za sumu kuvu yaani 'aflatoxin'.</p>	

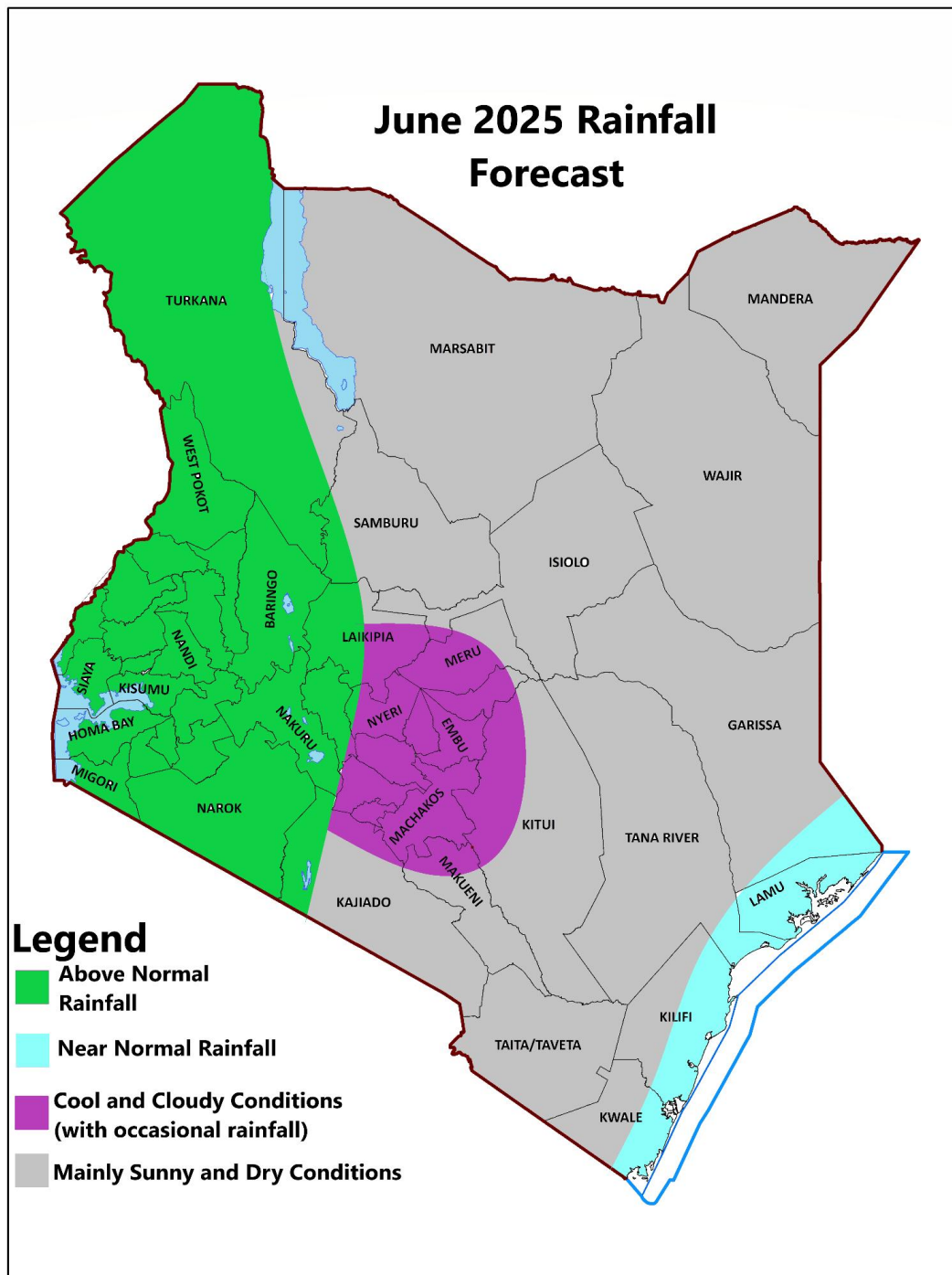
For further information, please contact:



Daniel M. Mbithi
County Director of Meteorological Services
Mobile: 0715255171
Email: mbithi_d@yahoo.com

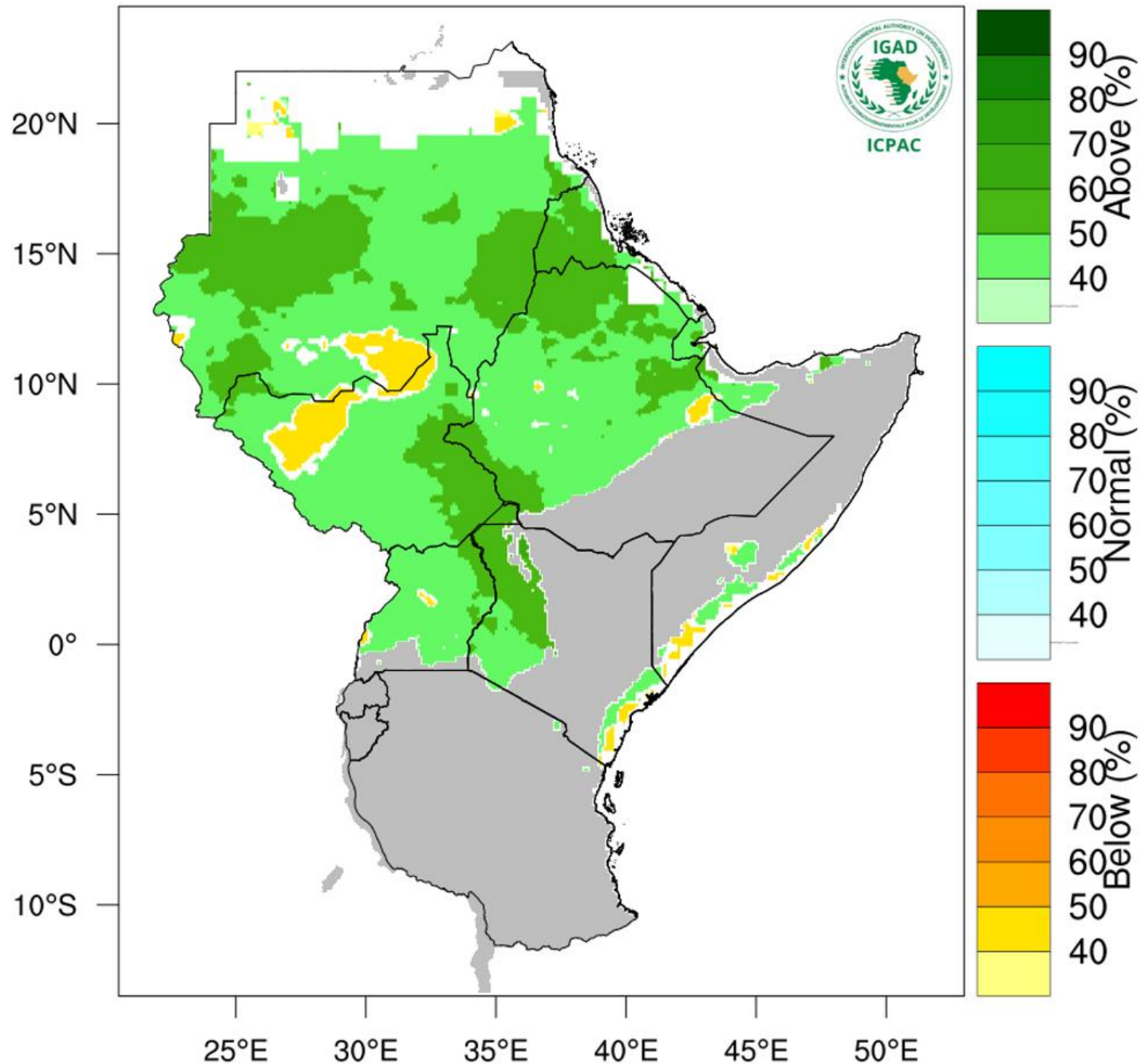
You can find more information about the climate and weather in Kenya on the KMD website <http://www.meteo.go.ke/>

Annex I: Rainfall forecast for the month of June 2025



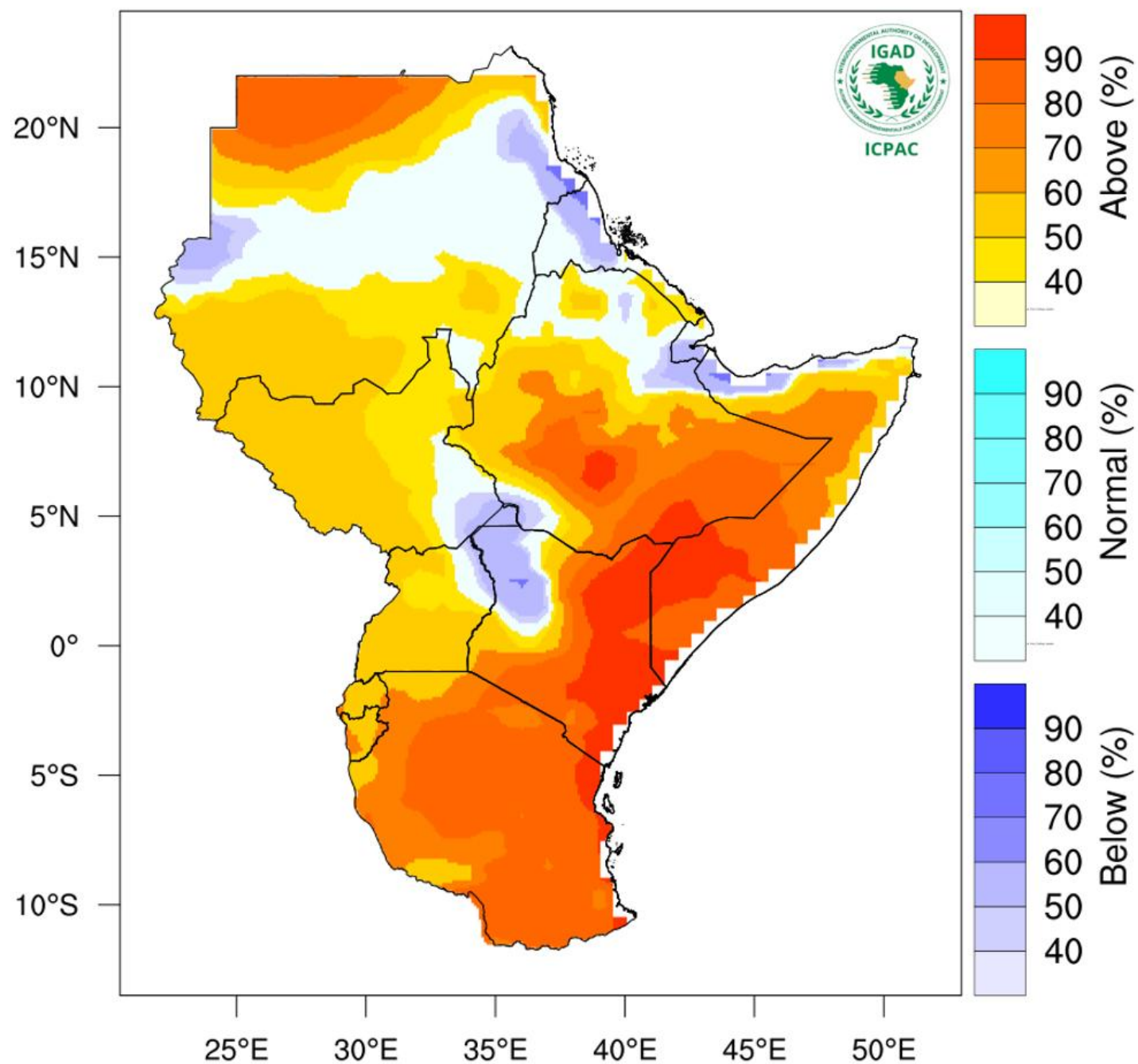
NB: Below normal rainfall expected over most places during the month of June 2025 in the County

Rainfall Probabilistic Forecast for Jun - Aug 2025



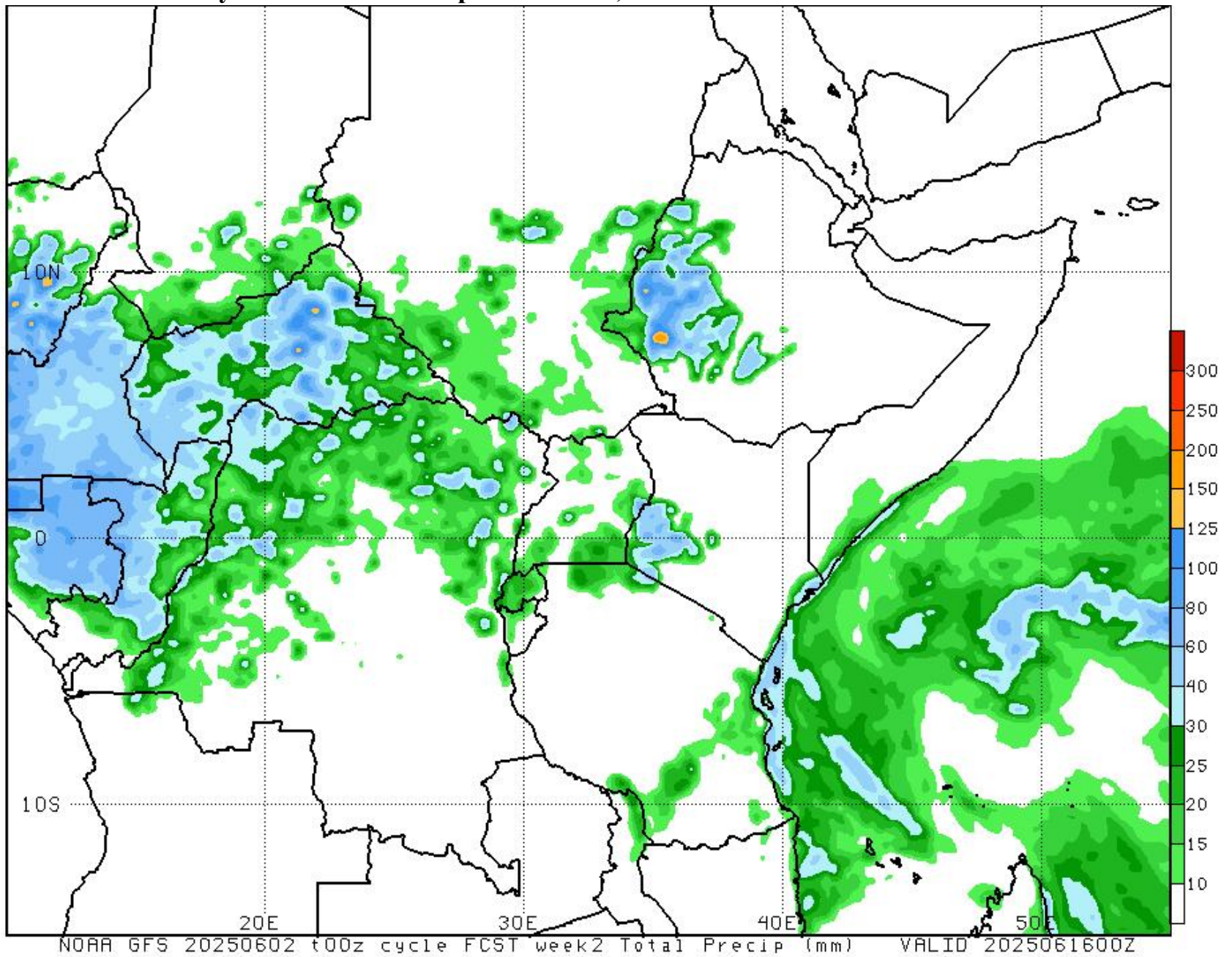
NB: Drier than normal conditions expected over most parts of the County between June to August 2025

Temperature Forecast for Jun - Aug 2025



NB: Warmer than usual conditions indicated over most parts of Kitui County between June and August 2025

Annex IV: Fourteen days rainfall forecast up to 16th June, 2025



NB: Drier than normal conditions expected over most parts of the County between 3rd to 16th June, 2025