



MINISTRY OF ENVIRONMENT, CLIMATE CHANGE AND FORESTRY

STATE DEPARTMENT FOR ENVIRONMENT AND CLIMATE CHANGE

KENYA METEOROLOGICAL DEPARTMENT

West

Our Ref: MET/7/293

Date: 13 January 2024

## SEVEN-DAY WEATHER FORECAST FOR 14 TO 20 JANUARY 2025

### SUMMARY

#### Forecast for 14 to 20 January 2025

- Mainly sunny and dry weather conditions expected to prevail over most parts of the country. However, a few areas in the Highlands West and East of the Rift Valley including Nairobi, Lake Victoria Basin, South Rift Valley and the South-eastern lowlands may receive occasional rainfall towards the end of the forecast period.

#### Weather Review for 6 to 12 January 2025

- Rainfall was recorded over some parts of the Highlands West and East of the Rift Valley including Nairobi, the Lake Victoria Basin, Central and South Rift Valley and the South-eastern lowlands.
- Day-time (maximum) temperatures increased over most stations except over Northeast, Lake Victoria Basin, Kakamega, Kisii and Mombasa where temperatures decreased.
- Night-time (minimum) temperatures decreased over most stations except over Lodwar, Kitale, Kakamega, Kericho, Narok, Kangema and Thika where temperatures increased.

### 1 FORECAST FOR 14 TO 20 JANUARY 2025

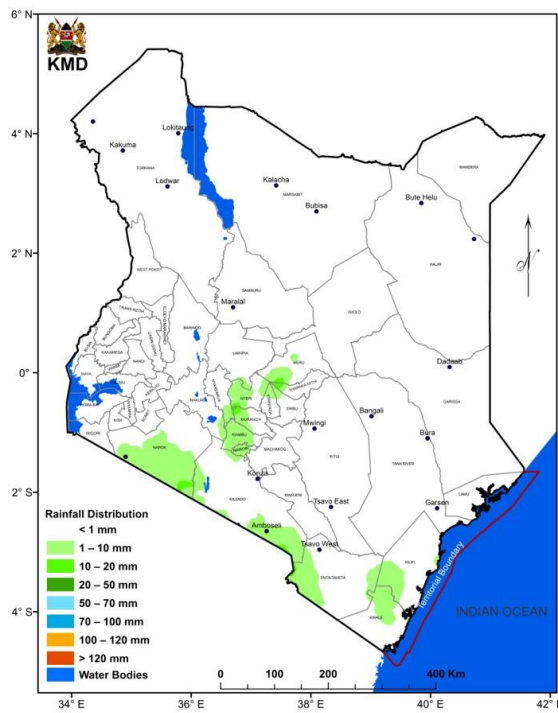


FIG 1: FORECASTED SEVEN-DAY TOTAL RAINFALL FOR 14 TO 20<sup>TH</sup> JANUARY 2025

Mainly sunny and dry weather conditions are expected to prevail over most parts of the country. However, occasional rainfall may be experienced over a few areas in the Highlands West and East of the Rift Valley including Nairobi, Lake Victoria Basin, South Rift Valley and the South-eastern lowlands especially towards the end of the forecast period, as shown in **Figure 1**.

Average daytime (maximum) temperatures of more than 30°C will be experienced over the Coast, North-eastern, North-western and parts of the Highlands West of the Rift Valley, Lake Victoria Basin and South eastern lowlands as shown in **Figure 2**.

Average night-time (minimum) temperatures will be less than 10°C in some parts of the Highlands East of the Rift Valley, Central and South Rift Valley and South eastern lowlands, as shown in **Figure 3**.

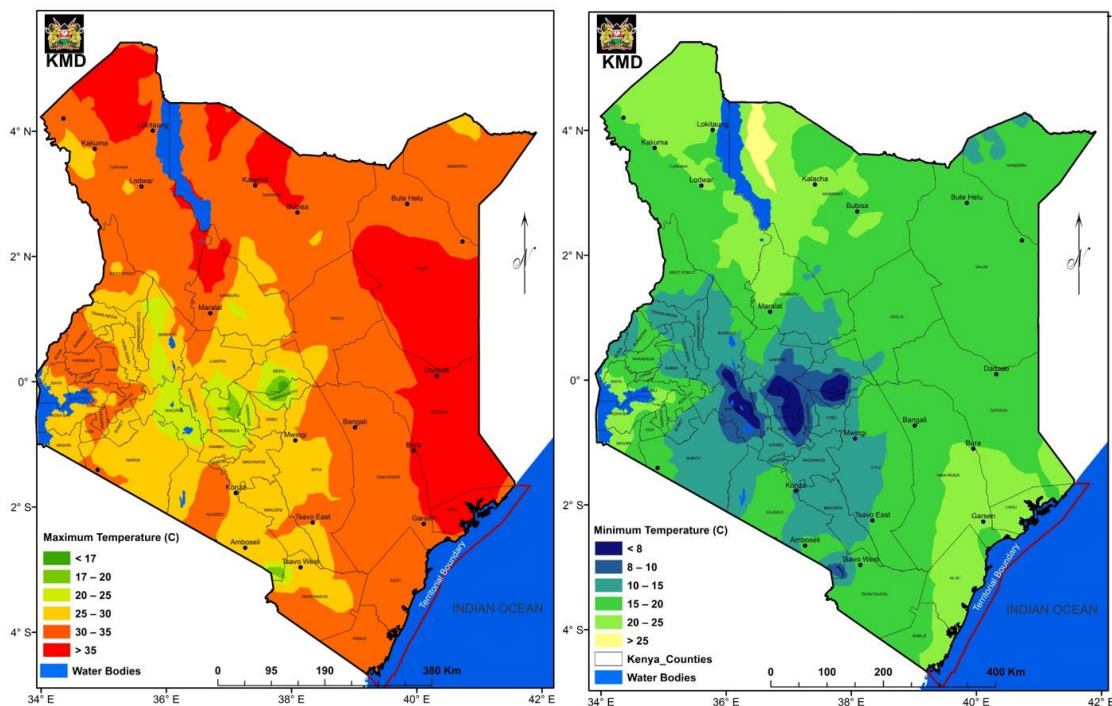


FIG 2: FORECASTED AVERAGE MAXIMUM TEMPERATURE FOR 14 TO 20<sup>TH</sup> JANUARY 2025

FIG 3: FORECASTED AVERAGE MINIMUM TEMPERATURE FOR 14 TO 20<sup>TH</sup> JANUARY 2025

## 1.1 DETAILED REGIONAL RAINFALL FORECAST FOR 14 TO 20 JANUARY 2025

### 1.1.1 The Lake Victoria Basin, the Central and South Rift Valley and parts of the Highlands West of the Rift Valley (*Nandi, Kakamega, Vihiga, Bungoma, Siaya, Busia, Nakuru, Trans-Nzoia, Kisii, Nyamira, Kericho, Bomet, Kisumu, Homabay, Migori and Narok Counties*):

Mainly sunny intervals expected to prevail during the day. However, a few areas are likely to receive morning rains and late afternoon showers and thunderstorms towards the end of the forecast period. Nights are expected to be partly cloudy though a few areas in Narok may experience showers towards the end of the forecast period.

### 1.1.2 The North Rift Valley and parts of the Highlands West of the Rift Valley (*Uasin-Gishu, Elgeyo-Marakwet, Baringo and West-Pokot Counties*)

Sunny intervals are expected during the day while nights are likely to be partly cloudy.

### 1.1.3 North-western Kenya (*Turkana and Samburu Counties*):

Sunny conditions are expected during the day while nights are likely to be partly cloudy.

### 1.1.4 The Highlands East of the Rift Valley (including Nairobi County) (*Nyandarua, Nyeri, Laikipia, Kirinyaga, Murang'a, Kiambu, Meru, Embu, Tharaka-Nithi and Nairobi Counties*):

Daylong sunny intervals expected to prevail throughout the forecast period. However, a few areas are likely to experience morning rains and late afternoon showers towards the end of the forecast period. Nights are expected to be partly cloudy, though a few areas may experience showers towards the end of the forecast period.

### 1.1.5 North-eastern Kenya (Marsabit, Mandera, Wajir, Garissa and Isiolo Counties):

Sunny intervals are expected during the day while nights are likely to be partly cloudy.

### 1.1.6 The South-eastern lowlands (Machakos, Kitui, Makueni, Kajiado and Taita-Taveta Counties as well as the inland parts of Tana-River County):

Mainly sunny intervals expected to prevail during the day. However, a few areas are likely to experience morning rains and late afternoon showers towards the end of the forecast period. Nights are expected to be partly cloudy though a few areas may experience showers towards the end of the forecast period.

### 1.1.7 The Coast (Mombasa, Kilifi, Lamu and Kwale Counties as well as the coastal parts of Tana-River County):

Daylong sunny intervals expected to prevail through most of the forecast period, with the possibility of a few areas receiving occasional light morning showers. Nights are expected to be partly cloudy.

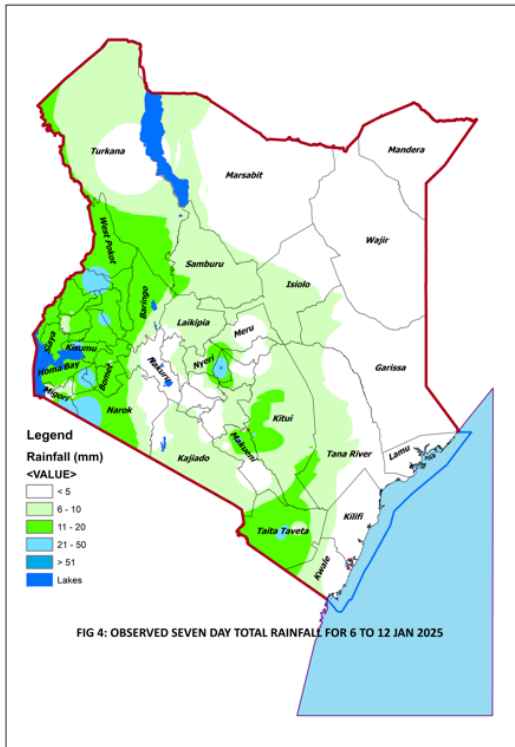
## 1.2 DETAILED TEMPERATURE FORECAST FOR 14 TO 20 JANUARY 2025

Expected maximum and minimum temperatures for selected towns and cities are shown in **Table 1**.

CITY/TOWN	MAX (°C)	MIN (°C)	CITY/TOWN	MAX (°C)	MIN (°C)	CITY/TOWN	MAX (°C)	MIN (°C)
LODWAR	37.0	20.0	KISUMU	31.0	18.0	THIKA	30.0	14.0
MARSABIT	30.0	16.0	SUBA	31.0	21.0	NGONG	27.0	12.0
MOYALE	33.0	18.0	NAKURU	27.0	11.0	MACHAKOS	27.0	12.0
GARISSA	38.0	22.0	NAROK	28.0	09.0	MAKINDU	33.0	17.0
WAJIR	38.0	21.0	LAIKIPIA	29.0	09.0	KITUI	30.0	16.0
MANDERA	36.0	20.0	NYAHURURU	24.0	04.0	VOI	34.0	19.0
KITALE	30.0	11.0	KANGEMA	27.0	14.0	LAMU	34.0	23.0
KAKAMEGA	32.0	14.0	NYERI	28.0	10.0	MALINDI	32.0	25.0
ELDORET	26.0	09.0	EMBU	29.0	14.0	MSABAHA	33.0	24.0
KERICHO	27.0	09.0	MERU	27.0	11.0	MTWAPA	33.0	24.0
KISII	28.0	15.0	NAIROBI	28.0	13.0	MOMBASA	34.0	24.0

## 2 WEATHER REVIEW FOR 6 TO 12 JANUARY 2025

### 2.1.1 Rainfall Review

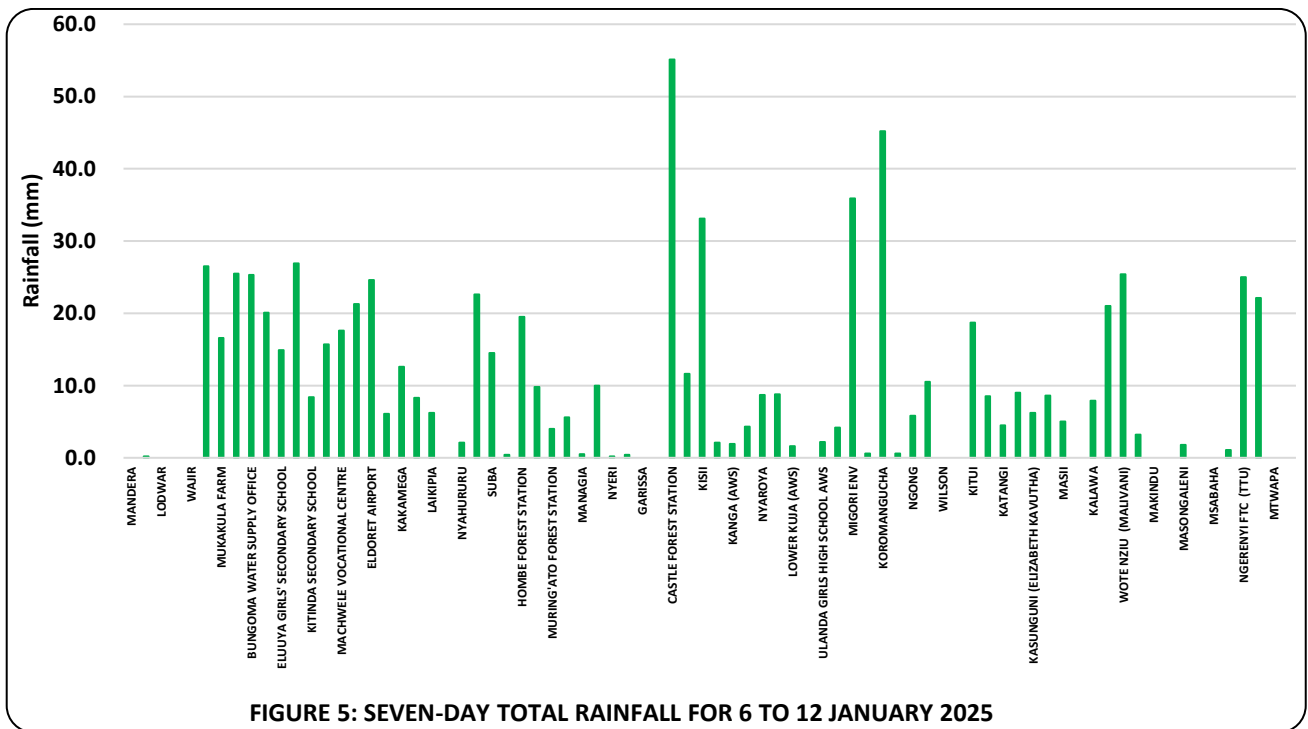


Rainfall was recorded over some parts of the Highlands West and East of the Rift Valley including Nairobi, the Lake Victoria Basin, Central and South Rift Valley and the South-eastern lowlands, as shown in **Figures 4 & 5**.

Comparing the 30 December 2024 to 5 January 2025 and 6 to 12 January 2025 periods, it is noted that rainfall amounts increased in the areas that received rainfall except a few areas in Taita Taveta and Kilifi counties where rainfall amounts decreased.

The highest seven-day rainfall total (55.1 mm) was recorded at Castle Forest Rainfall Station in Kirinyaga County.

Koromangucha rainfall station in Migori recorded the highest amount of rainfall within 24-hours: 45.2 mm on 10 January 2025.



## 2.2 Temperature Review

Comparing the 30 December 2024 to 5 January 2025 and 6 to 12 January 2025 periods, it is noted that day-time (maximum) temperatures increased over most stations except over Northeast, Lake Victoria Basin, Kakamega, Kisii and Mombasa where temperatures decreased. Night-time (minimum) temperatures decreased over most stations except over Lodwar, Kitale, Kakamega, Kericho, Narok, Kangema and Thika where temperature increased.

Lodwar Meteorological Station recorded the highest daily maximum temperature: 37.2°C on 8, 9 and 10 January 2025 while Nyahururu Meteorological Station recorded the lowest daily minimum temperature: 3.8°C on 7 January 2025. The same stations recorded the highest seven-day average maximum temperature and the lowest seven-day average minimum temperature: 36.9°C and 6.6°C respectively (see **Figure 6**).

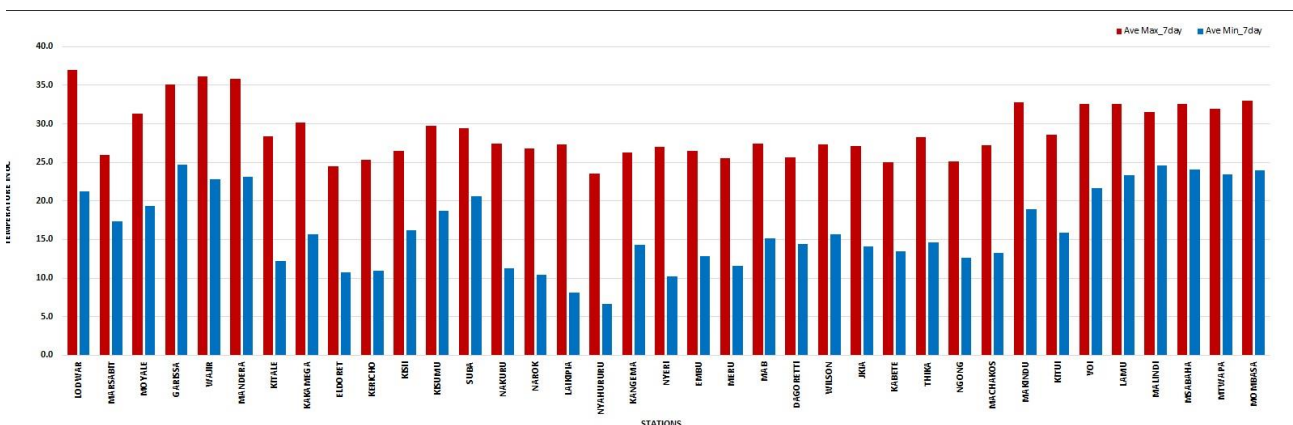


FIGURE 6: SEVEN-DAY AVERAGE MAXIMUM & MINIMUM TEMPERATURES FOR 6 TO 12 JANUARY 2025

**N.B:** This forecast should be used in conjunction with the daily (24-hour) and five-day forecasts issued by this Department. County specific forecasts are available from the offices of respective County Directors of Meteorological Services.

### KEY OF SCIENTIFIC WORDS USED

24-hour rainfall categories	
Range	Category
<5mm	Light
5-20mm	Moderate
20-50mm	Heavy
>50mm	Very heavy

Rainfall coverage	
Term	Meaning
Most places	Between 66% and 100%
Several places	Between 33% and 66%
Few places	Less than 33%

Dr David Gikungu  
**DIRECTOR OF METEOROLOGICAL SERVICES**